

Surname	Centre Number	Candidate Number
Other Names		0



**GCSE**

4241/02

**GEOGRAPHY  
SPECIFICATION B  
HIGHER TIER  
UNIT 1**

A.M. THURSDAY, 14 June 2012

1 hour

**Suitable for Modified Language Candidates**

For examiner's use only	
Question 1	
Question 2	60
Total Marks	

4241/02/0001

**INSTRUCTIONS TO CANDIDATES**

Use black ink or black ball-point pen. Do not use gel pen or correction fluid.

Write your name, centre number and candidate number in the spaces at the top of this page.

Answer **both** questions. At the end of each question there is a choice of case studies.

Write your answers in the spaces provided in this booklet.

If you run out of space, use the continuation page at the back of the booklet, taking care to number the question(s) correctly.

**INFORMATION FOR CANDIDATES**

The number of marks is given in brackets [ ] at the end of each question or part-question.

You are reminded that assessment will take into account the quality of written communication used in the case study question of each theme.



### Theme 1: Challenges of Living in a Built Environment

Answer **all** parts of (a) to (d). There is a choice of questions in (e).

1. (a) Study the maps below.



Describe the location of Lanreath.

[3]

.....

.....

.....

.....

.....



(b) Study the newspaper extract below.

**SEPTEMBER 2004: LANREATH LOSES BATTLE TO KEEP LOCAL SHOP AND POST OFFICE**

Residents of Lanreath complained that the recent shop and Post Office closure means that it is now a 4 mile round trip to their nearest shop. Lanreath has already suffered the loss of its pub and local bus service due to falling demand.

They are also worried about the future of their 200 year old primary school, which is under threat of closure.

(i) Village shops sell mainly low order goods. What is meant by the term 'low order goods'? [1]

.....  
.....

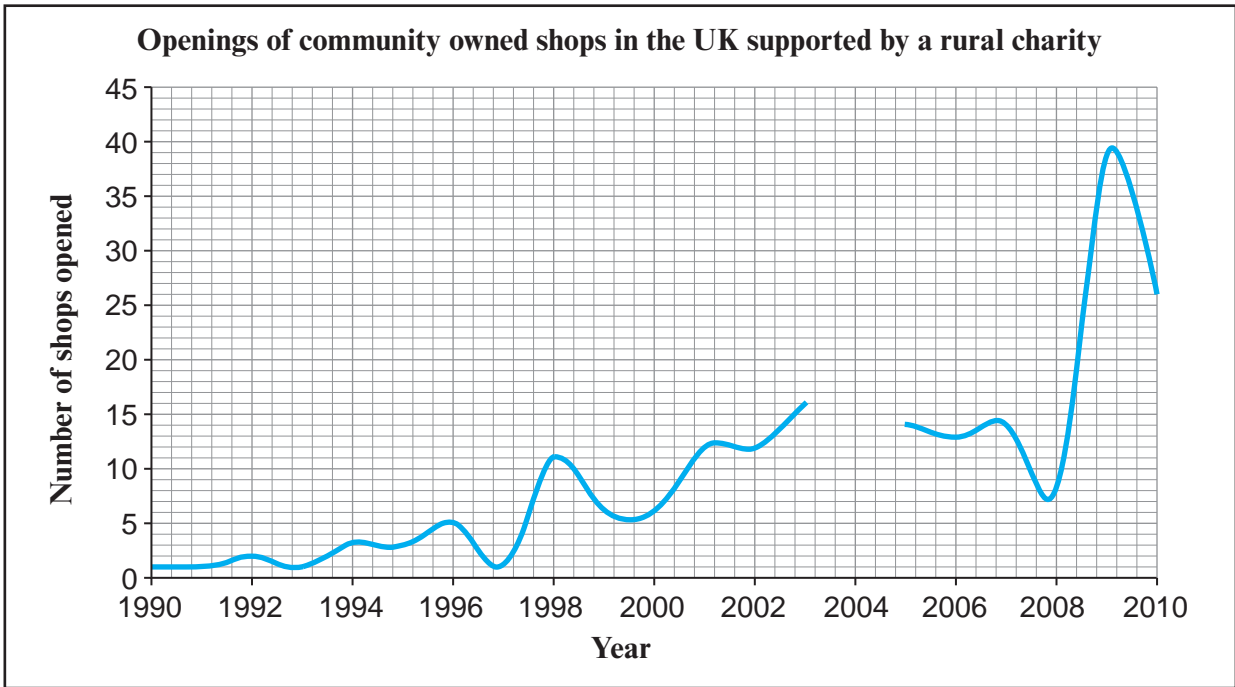
(ii) Give and explain **two** ways in which the loss of services in Lanreath village could affect the quality of life for different groups of people living there. [4]

.....  
.....  
.....  
.....  
.....  
.....  
.....  
.....  
.....  
.....

4241  
02/00/03



(c) Study the graph below.



The Plunkett Foundation is a Charity. It helps small towns and villages, including Lanreath, to set up and run their own shops and post offices.

- (i) Complete the graph above to show that 20 new stores were opened in 2004. [1]
- (ii) Describe the trend of the graph between 1990 and 2010. Use figures in your answer. [3]

.....

.....

.....

.....

.....

.....



(d) Read the information below.

**June 2008:** Rural charity helps new shop to open in Lanreath village

I work part-time as a manager in the shop. I am paid to do this. We have 18 unpaid volunteers who help to run it.

I am unemployed and work as a volunteer in the shop. We sell products from local farmers and local craftworkers.

(i) Explain how the opening of the new shop may have affected the quality of life for different groups of people living in Lanreath. [4]

.....

.....

.....

.....

.....

.....

.....

.....

(ii) Counter-urbanisation is the increase in people moving from urban areas to live in rural areas. One reason is the improvement in ICT facilities, such as internet broadband. Suggest one **other** reason for counter-urbanisation. [1]

.....

.....

4241  
02/00/05



- (iii) The population in some rural villages, like Lanreath, is increasing as a result of counter-urbanisation. Explain the effects that counter-urbanisation might have on different groups of people living in rural villages. [5]

.....

.....

.....

.....

.....

.....

.....

.....

.....

.....

.....

.....

.....

.....

.....

.....

.....

.....

.....

.....

(e) Case Studies

Answer only **one** of the questions, either (i) or (ii).

**Either**

**Tick (✓)  
your choice**

- (i) For a service in a town or city:

- Name the service.
- Describe the distribution of this service within the town or city.
- Explain how access to this service varies for different groups of people.

**Or**

- (ii) For a town or city where there are variations (differences) in quality of life.

- Name and locate the town or city.
- Describe how the quality of life varies in different parts of the town/city.
- Explain why quality of life varies between these places.

[8]

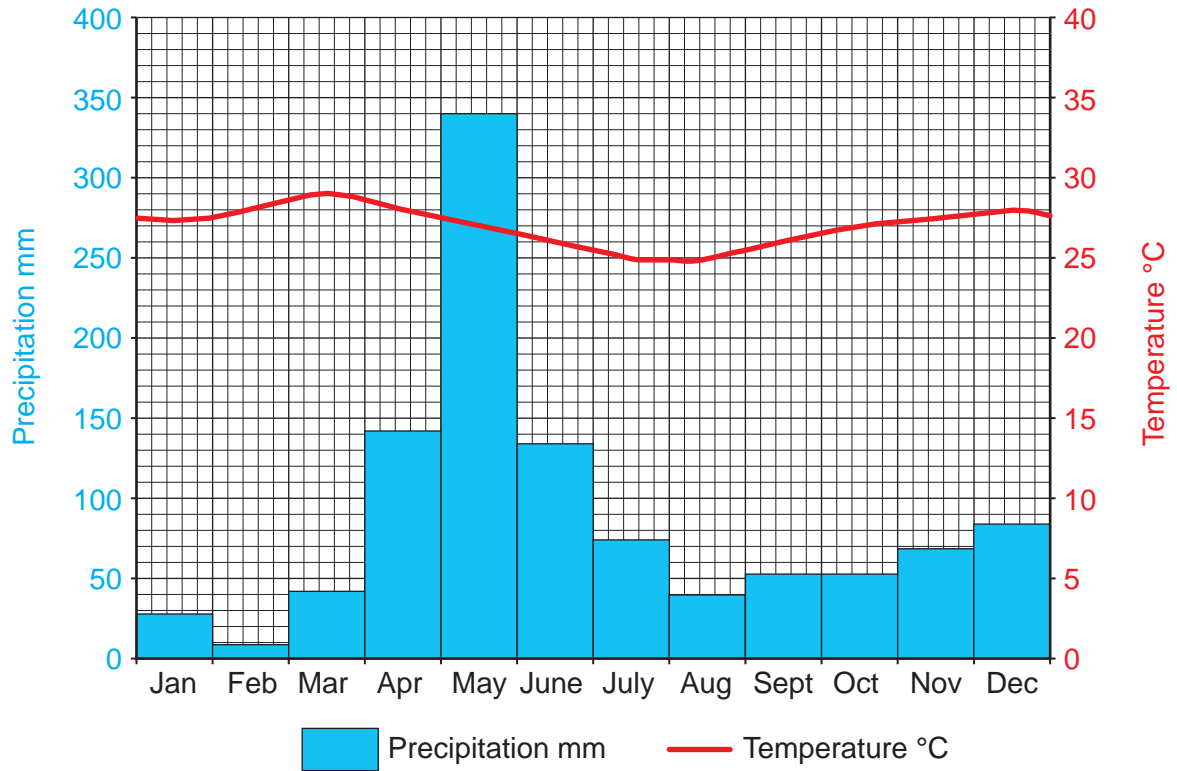




**Theme 2: People and the Natural World Interactions**

Answer all parts of (a) to (d). There is a choice of question in (e).

2. (a) Study the climate graph of Kipini, in Kenya, below.



Describe the pattern of precipitation throughout the whole year in Kipini. Refer to figures in your answer. [2]

.....

.....

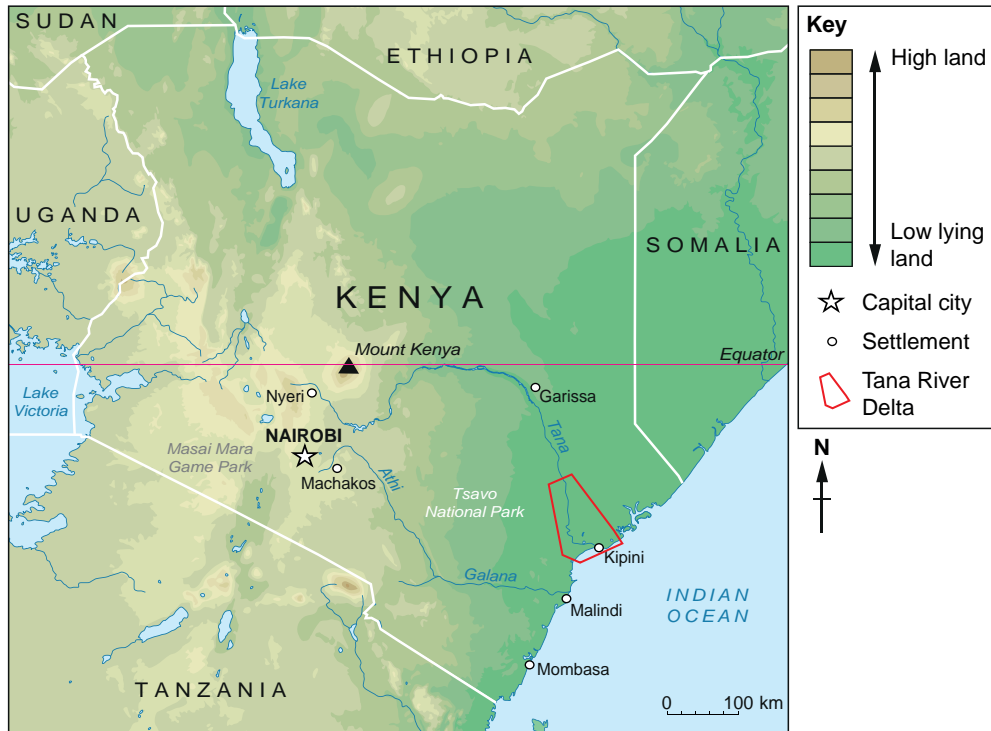
.....

.....





Map of Kenya showing the location of the Tana River Delta in Kenya



The Tana River Delta in Kenya floods during the rainy season. During the dry season people move their cattle from the dry area to live on the delta. 30,000 farmers and fishermen rely on the delta for their jobs.

(b) (i) Use the map above to describe the course of the Tana River from source to mouth. [3]

.....

.....

.....

.....

.....

(ii) The Tana Delta is formed as a result of deposition. What is meant by the term ‘deposition’? [1]

.....

.....

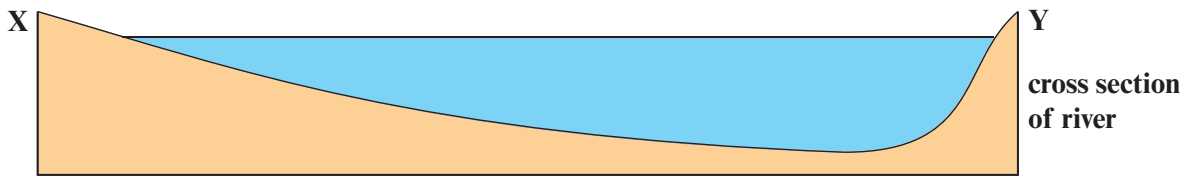
(iii) The floodplain of the Tana River Delta is used by farmers. Give one feature of a floodplain that makes it good for farming. [1]

.....

.....



(c) Study the photograph below. It shows a meander on the Tana Delta, Kenya.



(i) Identify the **two** landforms labelled on the photograph above: [2]

A. ....

B. ....

(ii) Describe how a river erodes **and** transports material along its channel. [4]

.....

.....

.....

.....

.....

.....

.....

.....

.....

.....



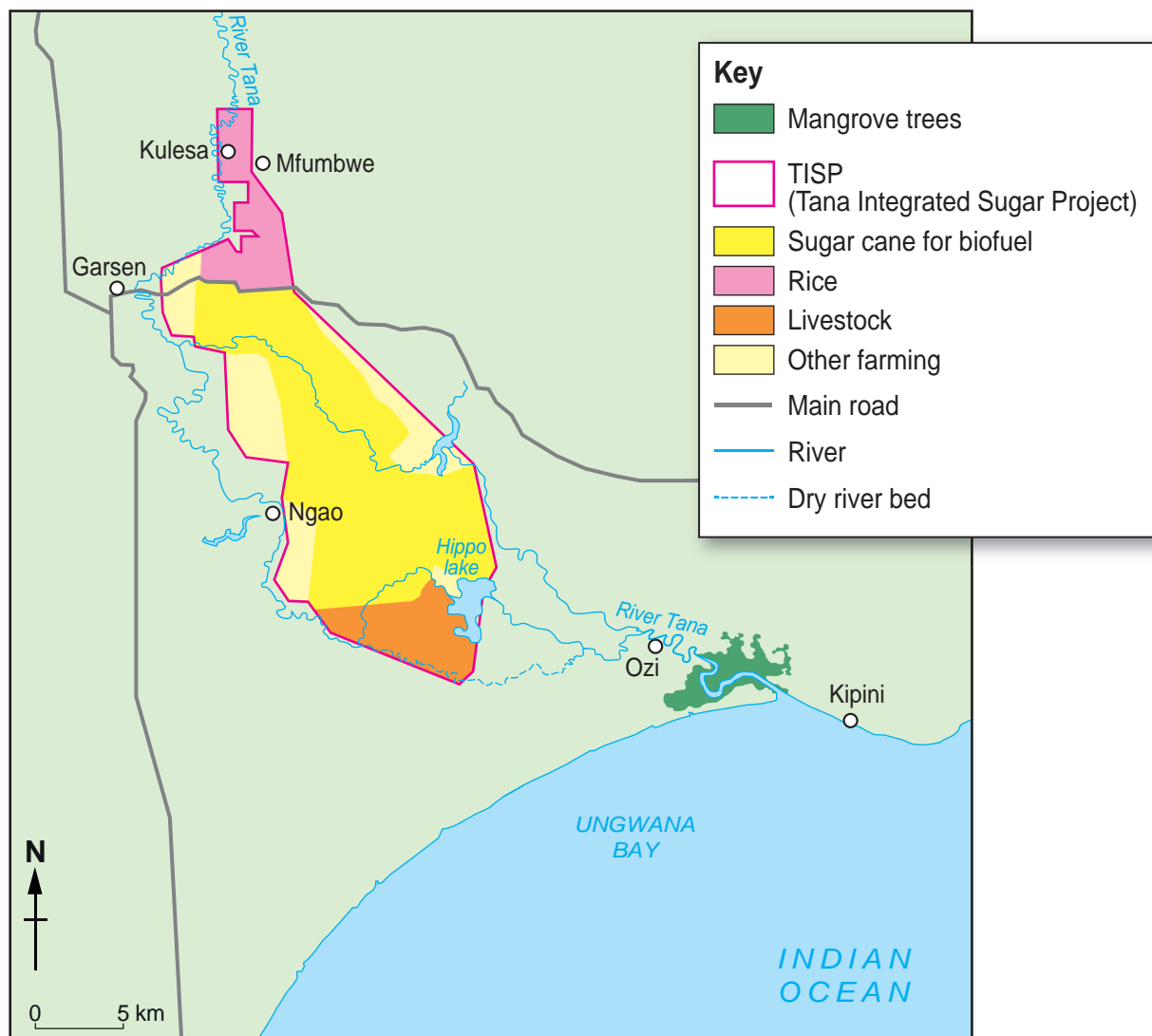
**BLANK PAGE**

**PLEASE DO NOT WRITE  
ON THIS PAGE**



(d) Study the information below about the Tana Integrated Sugar Project (TISP)

### The Tana River Delta



The TISP (Tana Integrated Sugar Project) is going to change the land use of the Tana River Delta. It will employ 40,000 people in an area where the people are very poor.

The TISP will take a third of the Tana River's water for irrigating the sugar cane. The processing factories will also need water and they will produce a lot of waste which will go into the Tana River.

Many local people have objected to the TISP because it threatens the local water cycle and might cause serious damage to the delta.



- (i) Explain how the activities of the TISP might affect the River Tana and its delta. [4]

.....

.....

.....

.....

.....

.....

.....

.....

- (ii) Explain how an unreliable supply of water might affect the quality of life of people living in the Tana delta area. [5]

.....

.....

.....

.....

.....

.....

.....

.....

.....

.....

.....



(e) Case Studies

Answer only **one** of the questions, either (i) or (ii).

Tick (✓)  
your choice

**Either**

(i) For a period of weather caused by high **or** low pressure:

- Name and locate the area affected by the weather.
- Describe the main features of the weather.
- Explain how the weather affected different groups of people.

**Or**

(ii) For a river **or** coastal landform that affects the lives of people:

- Name and locate the landform.
- Describe the main features of the landform.
- Explain how the landform affects the lives of different groups of people.

[8]

.....

.....

.....

.....

.....

.....

.....

.....

.....

.....

.....

.....

.....

.....

.....

.....

.....

.....

.....

.....

.....

.....

.....

.....



.....

.....

.....

.....

.....

.....

.....

.....

.....

.....

**Total marks = 30**

**End of Theme 2**



