



**GCE AS/A level**

1201/01

**GEOGRAPHY – G1**  
**Changing Physical Environments**

A.M. TUESDAY, 14 January 2014

1 hour 30 minutes

**ADDITIONAL MATERIALS**

In addition to this examination paper, you will need **one** 12 page answer book.

**INSTRUCTIONS TO CANDIDATES**

Use black ink or black ball-point pen.

Answer **all** questions.

Write your answers in the separate answer book provided.

Write your name, centre number and candidate number in the spaces at the top of the answer book.

**INFORMATION FOR CANDIDATES**

Each question carries **25** marks.

The number of marks is given in brackets at the end of each question or part-question.

You are reminded that assessment will take into account the quality of written communication used in your answers.

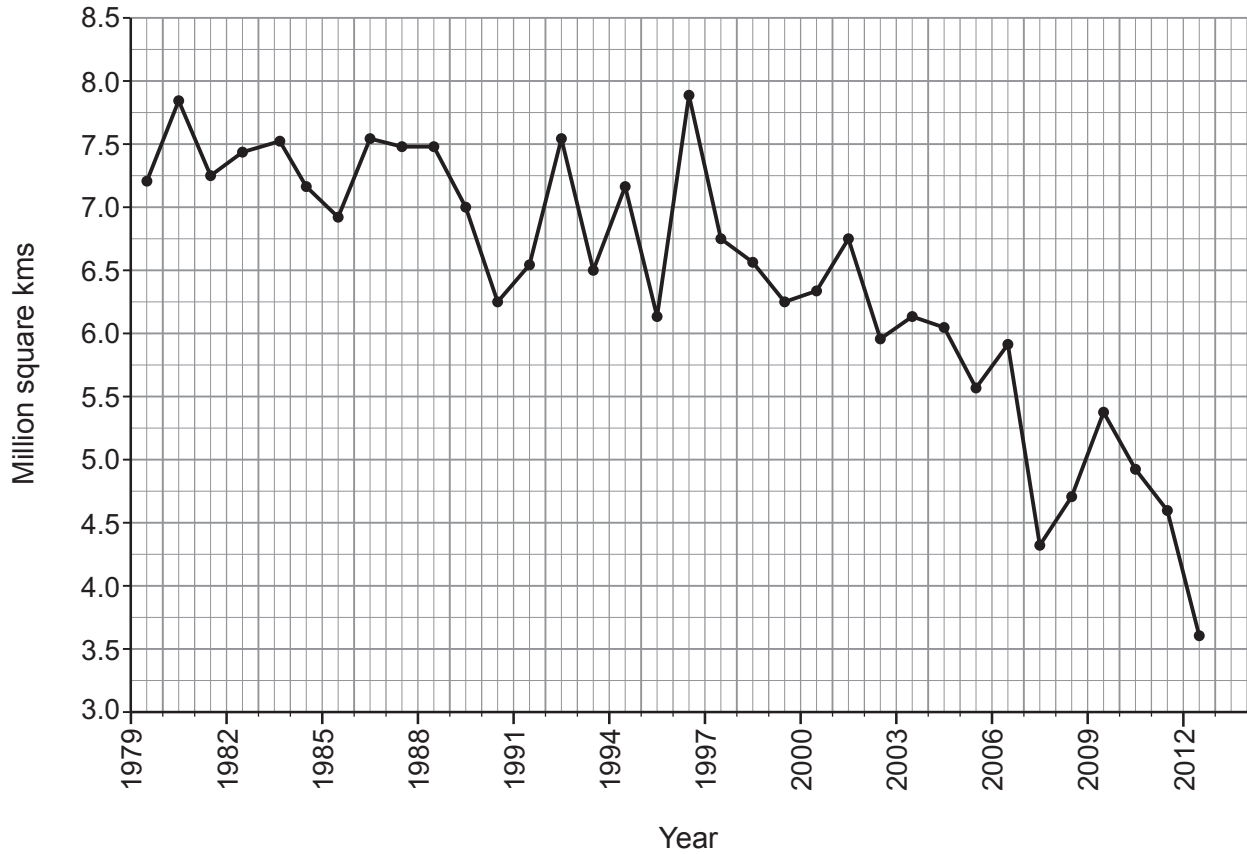
**THIS PAPER REQUIRES THAT YOU MAKE THE FULLEST POSSIBLE USE OF APPROPRIATE EXAMPLES IN SUPPORT OF YOUR ANSWERS. SKETCH-MAPS AND DIAGRAMS SHOULD BE INCLUDED WHERE RELEVANT.**

**G1 – CHANGING PHYSICAL ENVIRONMENTS**

*Answer all questions.*

*Make the fullest possible use of examples in support of your answers.*

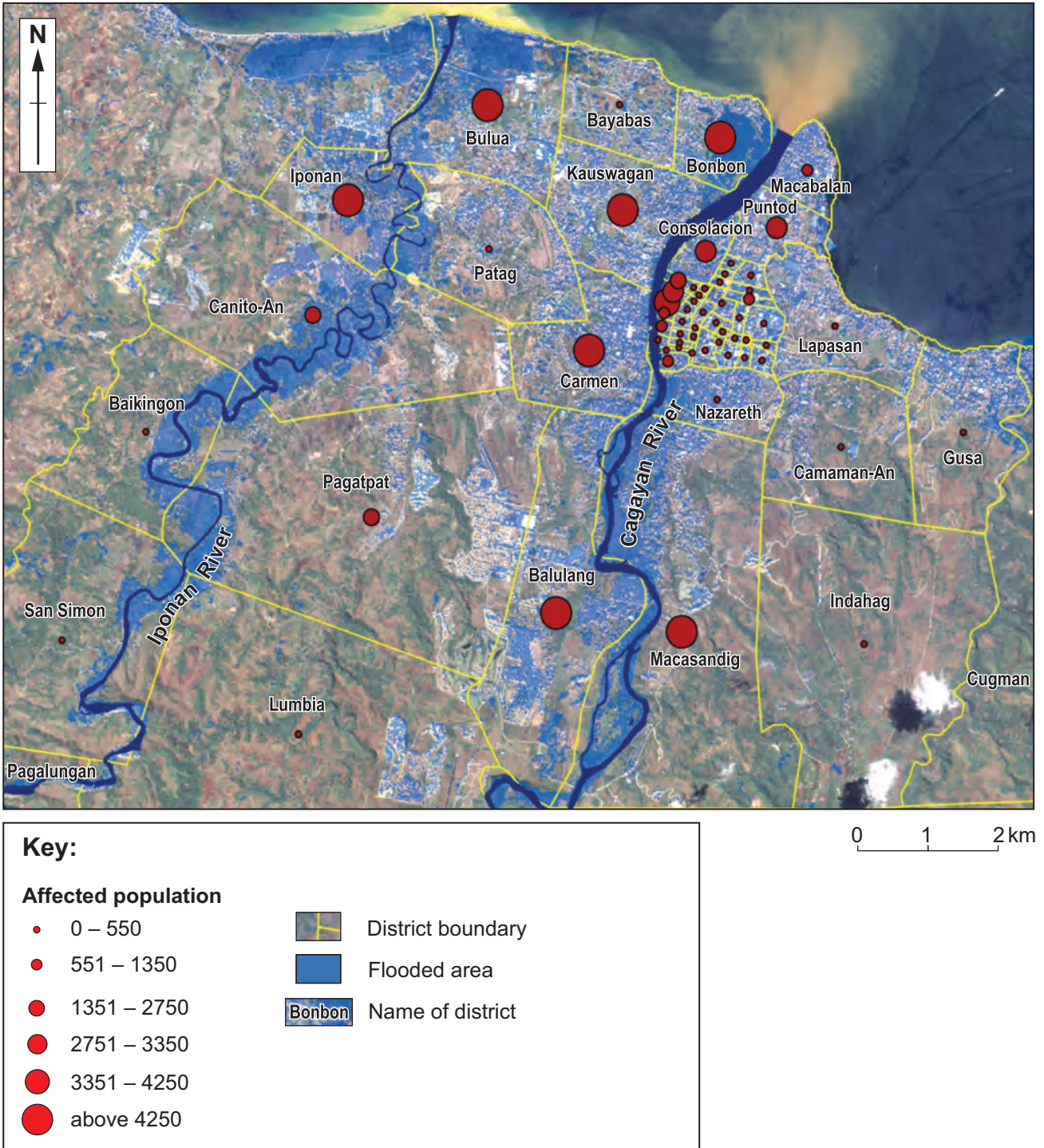
**Figure 1: Extent of Arctic sea ice in September, 1979–2012**



*Source: adapted from US National Snow and Ice Data Center*

1. (a) Use **Figure 1** to describe changes in the extent of Arctic sea ice. [5]
- (b) Describe and explain the effect(s) of climate change on **one or more** biomes. [10]
- (c) Outline the strategies that governments can use to address climate change. [10]

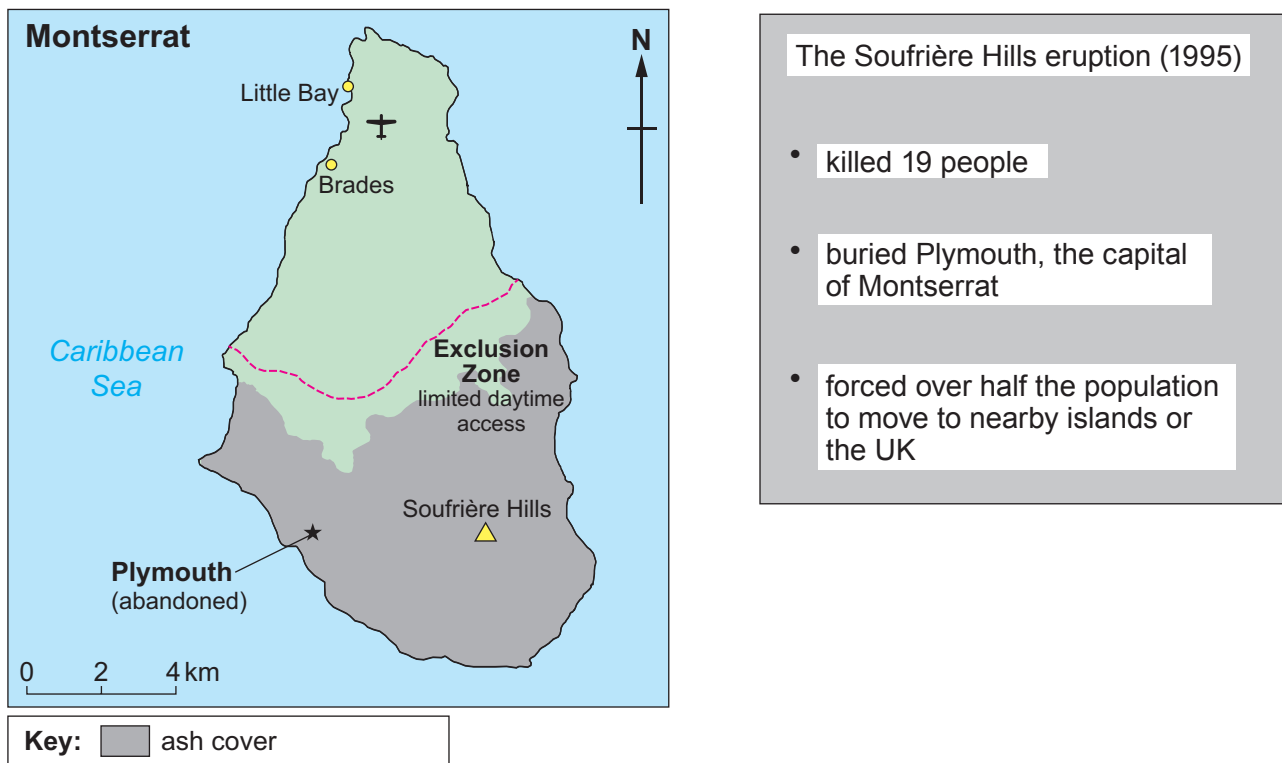
**Figure 2: Flooded area and affected population, Cagayan de Oro city, Philippines, December 2011**



Source: adapted from [www.disasterscharter.org](http://www.disasterscharter.org)

2. (a) Use **Figure 2** to describe both the location and number of people affected by flooding. [5]
- (b) Describe and explain the characteristics of **one or more** river regimes. [10]
- (c) Outline the effectiveness of management strategies used to overcome the impacts of **either** river flooding **or one** tectonic hazard. [10]

Figure 3: Perceptions of tectonic hazards, Montserrat



## JAMAICA **OBSERVER**

Friday, February 10, 2012

### Montserrat 'ready' for geothermal energy developers

Montserrat is to begin exploring its geothermal energy potential for domestic use and export to neighbouring islands.

Geothermal energy will be obtained mostly from the uninhabitable exclusion zone.

The government is looking into the potential of the superheated earth to replace expensive fossil fuels and decrease high energy bills for its citizens and businesses.

*Source: adapted from [www.jamaicaobserver.com](http://www.jamaicaobserver.com)*

3. (a) Use **Figure 3** to describe how different groups perceive tectonic hazards. [7]
- (b) Describe some strengths and weaknesses of using secondary sources of information in physical geography. [8]
- (c) Outline the importance of planning in your investigation into a changing physical environment.  
*You should state clearly the question that you have investigated.* [10]

**END OF PAPER**