

**ADVANCED SUBSIDIARY GCE  
 GEOGRAPHY A**

**2682/01**

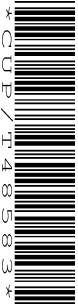
Geographical Investigation

**MONDAY 14 JANUARY 2008**

Morning  
 Time: 45 minutes

Candidates answer on the question paper

**Additional materials:** No additional materials are required



Candidate Forename

Candidate Surname

Centre Number

Candidate Number

**INSTRUCTIONS TO CANDIDATES**

- Write your name in capital letters, your Centre Number and Candidate Number in the boxes above.
- Use blue or black ink. Pencil may be used for graphs and diagrams only.
- Read each question carefully and make sure that you know what you have to do before starting your answer.
- Answer **all** the questions.
- Do **not** write in the bar codes.
- Do **not** write outside the box bordering each page.
- Write your answer to each question in the space provided.

**INFORMATION FOR CANDIDATES**

- The number of marks for each question is given in brackets [ ] at the end of each question or part question.
- The total number of marks for this paper is **60**.
- You will be awarded marks for the quality of written communication where an answer requires a piece of extended writing.
- Even where not specifically asked for, credit will be given for sketch maps and diagrams, provided they illustrate your answer.

FOR EXAMINER'S USE	
Qu.	Mark
1	
2	
3	
<b>TOTAL</b>	

This document consists of **8** printed pages.





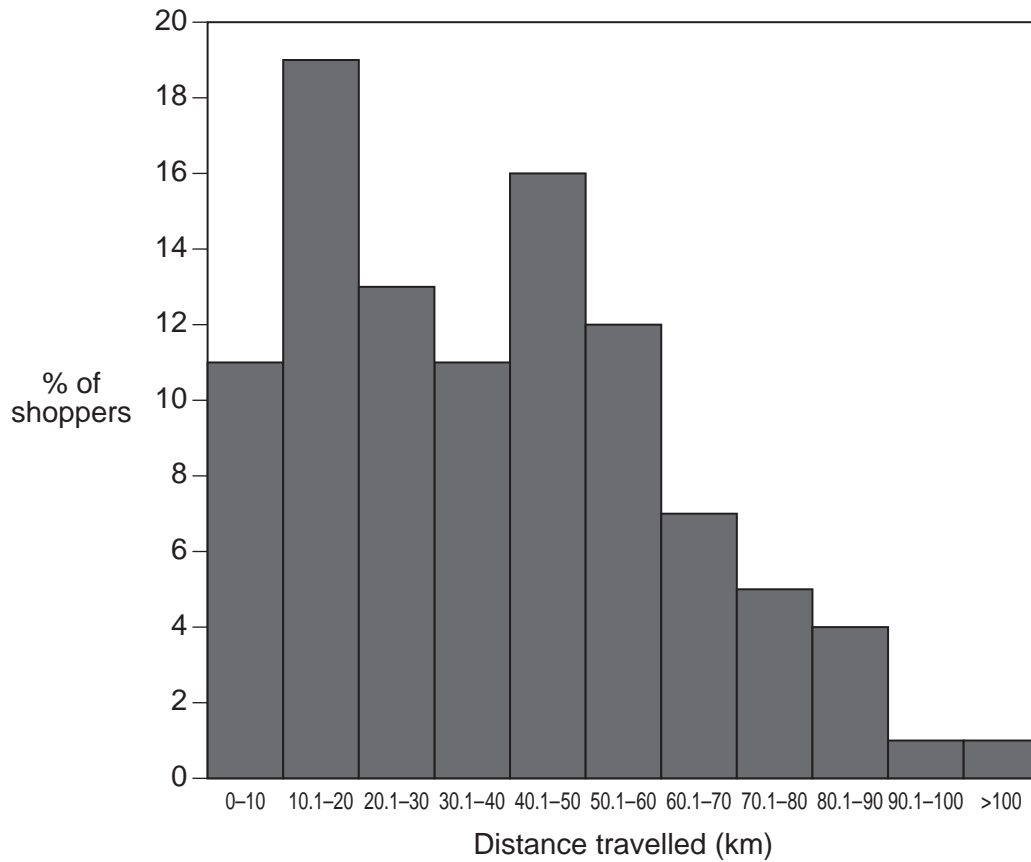






- (b) Study Fig. 1, which shows the results of an investigation of the distances travelled by shoppers to a city centre.

Explain how measures of central tendency can help to analyse the data shown.



**Fig. 1 Distances travelled by shoppers to a city centre**

.....

.....

.....

.....

.....

.....

.....

.....

.....

.....

.....

.....

.....

.....

.....

.....

.....

.....

.....

.....

.....

.....

