

Please check the examination details below before entering your candidate information

Candidate surname

Other names

**Pearson Edexcel
International
Advanced Level**

Centre Number

--	--	--	--	--

Candidate Number

--	--	--	--	--

Tuesday 14 May 2019

Afternoon (Time: 1 hour 45 minutes)

Paper Reference **WGE01/01**

Geography

International Advanced Subsidiary

Paper 1: Global Challenges

You must have:

Resource Booklet (enclosed)

Total Marks

--

Instructions

- Use **black** ink or ball-point pen.
- **Fill in the boxes** at the top of this page with your name, centre number and candidate number.
- Answer **all** questions in Section A. Answer **either** Question 5 **or** Question 6 in Section B.
- Answer the questions in the spaces provided
– *there may be more space than you need.*
- Calculators may be used.

Information

- The total mark for this paper is 90.
- The marks for **each** question are shown in brackets
– *use this as a guide as to how much time to spend on each question.*

Advice

- Read each question carefully before you start to answer it.
- Check your answers if you have time at the end.

Turn over ►

P56149A

©2019 Pearson Education Ltd.

1/1/1/1/1/1/1



Pearson

SECTION A

You must use the Resource Booklet.

Answer ALL questions in this section. Write your answers in the spaces provided.

Some questions must be answered with a cross in a box ☒. If you change your mind about an answer, put a line through the box ☒ and then mark your new answer with a cross ☒.

1 Study Figure 1 in the Resource Booklet.

(a) (i) Which **two** tectonic plates cause hazards on Montserrat?

(1)

- A North American and South American
- B Cocos and Caribbean
- C North American and Caribbean
- D Caribbean and South American

(ii) Explain **one** cause of earthquakes in Haiti.

(2)

.....

.....

.....

(iii) Suggest **one** possible cause of landslides in the Caribbean.

(2)

.....

.....

.....

DO NOT WRITE IN THIS AREA

DO NOT WRITE IN THIS AREA

DO NOT WRITE IN THIS AREA

DO NOT WRITE IN THIS AREA

DO NOT WRITE IN THIS AREA

DO NOT WRITE IN THIS AREA



(b) Explain how the scale of natural disaster impacts can be affected by:

(4)

the population density of the area

.....

.....

.....

.....

the governance of the area.

.....

.....

.....

.....

(c) Explain why mega-disasters have unusually large economic impacts.

(6)

.....

.....

.....

.....

.....

.....

.....

.....

.....

.....

.....

.....

.....

.....

.....

.....

.....

.....

.....

.....

.....

(Total for Question 1 = 15 marks)

DO NOT WRITE IN THIS AREA

DO NOT WRITE IN THIS AREA

DO NOT WRITE IN THIS AREA

DO NOT WRITE IN THIS AREA

DO NOT WRITE IN THIS AREA

DO NOT WRITE IN THIS AREA



2 Study Figure 2 in the Resource Booklet.

(a) (i) Identify the country with lower carbon dioxide emissions than the EU in 2005. (1)

(ii) Describe the trends in carbon dioxide emissions for the USA. (2)

(iii) Suggest **one** reason for the trend in carbon dioxide emissions for the EU after 1990. (2)

(b) Explain how physical feedback mechanisms may lead to a climate change 'tipping point'. (4)

DO NOT WRITE IN THIS AREA

DO NOT WRITE IN THIS AREA

DO NOT WRITE IN THIS AREA

DO NOT WRITE IN THIS AREA

DO NOT WRITE IN THIS AREA

DO NOT WRITE IN THIS AREA



(c) Explain how shifts in the location of climate belts, caused by global warming, may affect farmers.

(6)

.....

.....

.....

.....

.....

.....

.....

.....

.....

.....

.....

.....

.....

.....

.....

.....

.....

.....

.....

.....

.....

.....

.....

(Total for Question 2 = 15 marks)

DO NOT WRITE IN THIS AREA

DO NOT WRITE IN THIS AREA

DO NOT WRITE IN THIS AREA

DO NOT WRITE IN THIS AREA

DO NOT WRITE IN THIS AREA

DO NOT WRITE IN THIS AREA



3 Study Figure 3 in the Resource Booklet.

(a) (i) Identify the region with the largest projected increase in total tourist arrivals between 2015 and 2030.

(1)

- A Africa
- B Asia
- C Europe
- D Middle East

(ii) Compare the growth in tourist numbers between Asia and Europe from 1995 projected to 2030.

(2)

.....

.....

.....

.....

(b) Explain how **one** development in transport has contributed to the 'shrinking world'.

(3)

.....

.....

.....

.....

.....

DO NOT WRITE IN THIS AREA

DO NOT WRITE IN THIS AREA

DO NOT WRITE IN THIS AREA

DO NOT WRITE IN THIS AREA

DO NOT WRITE IN THIS AREA

DO NOT WRITE IN THIS AREA



(c) Explain how mobile phone technology has contributed to globalisation.

(3)

.....

.....

.....

.....

.....

.....

.....

(d) Explain the impacts of deindustrialisation on workers in developed countries.

(6)

.....

.....

.....

.....

.....

.....

.....

.....

.....

.....

.....

.....

.....

.....

.....

.....

.....

.....

.....

.....

.....

(Total for Question 3 = 15 marks)

DO NOT WRITE IN THIS AREA

DO NOT WRITE IN THIS AREA

DO NOT WRITE IN THIS AREA

DO NOT WRITE IN THIS AREA

DO NOT WRITE IN THIS AREA

DO NOT WRITE IN THIS AREA



4 Study Figure 4 in the Resource Booklet.

(a) (i) Identify which city is projected to increase by more than 6 million people by 2030.

(1)

- A Cairo
- B Delhi
- C Shanghai
- D Tokyo

(ii) Suggest **one** reason why;

(4)

some developed world cities no longer appear in the top ten ranking for 2030

.....

.....

.....

.....

some developing world cities have entered the top ten ranking for 2030.

.....

.....

.....

.....

DO NOT WRITE IN THIS AREA

DO NOT WRITE IN THIS AREA

DO NOT WRITE IN THIS AREA

DO NOT WRITE IN THIS AREA

DO NOT WRITE IN THIS AREA

DO NOT WRITE IN THIS AREA



(b) Explain **two** environmental problems caused by rapid urban growth in megacities.

(4)

1

2

(c) Explain the social costs and benefits of globalisation for Asia.

(6)

(Total for Question 4 = 15 marks)

TOTAL FOR SECTION A = 60 MARKS



DO NOT WRITE IN THIS AREA

DO NOT WRITE IN THIS AREA

DO NOT WRITE IN THIS AREA

DO NOT WRITE IN THIS AREA

DO NOT WRITE IN THIS AREA

DO NOT WRITE IN THIS AREA

(b) Assess the extent to which successful management of global warming is limited by the attitudes of some groups and organisations.

(20)

Area with horizontal dotted lines for writing.

DO NOT WRITE IN THIS AREA

DO NOT WRITE IN THIS AREA

DO NOT WRITE IN THIS AREA

DO NOT WRITE IN THIS AREA

DO NOT WRITE IN THIS AREA

DO NOT WRITE IN THIS AREA



Handwriting practice area with horizontal dotted lines.

DO NOT WRITE IN THIS AREA

DO NOT WRITE IN THIS AREA

DO NOT WRITE IN THIS AREA

DO NOT WRITE IN THIS AREA

DO NOT WRITE IN THIS AREA

DO NOT WRITE IN THIS AREA

(Total for Question 5 = 30 marks)



If you answer Question 6 put a cross in this box .

6 Study Figure 6 in the Resource Booklet.

(a) Suggest how the migrant flows shown have different impacts on countries such as Germany.

(10)

Area with horizontal dotted lines for writing the answer to Question 6(a).

DO NOT WRITE IN THIS AREA

DO NOT WRITE IN THIS AREA

DO NOT WRITE IN THIS AREA

DO NOT WRITE IN THIS AREA

DO NOT WRITE IN THIS AREA

DO NOT WRITE IN THIS AREA



(b) Assess the extent to which current global population trends are likely to lead to a shortage of resources in the future.

(20)

Area with horizontal dotted lines for writing.

DO NOT WRITE IN THIS AREA

DO NOT WRITE IN THIS AREA

DO NOT WRITE IN THIS AREA

DO NOT WRITE IN THIS AREA

DO NOT WRITE IN THIS AREA

DO NOT WRITE IN THIS AREA



DO NOT WRITE IN THIS AREA

DO NOT WRITE IN THIS AREA

DO NOT WRITE IN THIS AREA

DO NOT WRITE IN THIS AREA

DO NOT WRITE IN THIS AREA

DO NOT WRITE IN THIS AREA

Area with horizontal dotted lines for writing.

(Total for Question 6 = 30 marks)

**TOTAL FOR SECTION B = 30 MARKS
TOTAL FOR PAPER = 90 MARKS**



DO NOT WRITE IN THIS AREA

DO NOT WRITE IN THIS AREA

DO NOT WRITE IN THIS AREA

BLANK PAGE



Pearson Edexcel International Advanced Level

Tuesday 14 May 2019

Afternoon (Time: 1 hour 45 minutes)

Paper Reference **WGE01/01**

Geography

International Advanced Subsidiary

Paper 1: Global Challenges

Resource Booklet

Do not return the Resource Booklet with the question paper

Turn over ►

P56149A

©2019 Pearson Education Ltd.

1/1/1/1/1/1/1



Pearson

SECTION A

The following resource relates to Question 1.

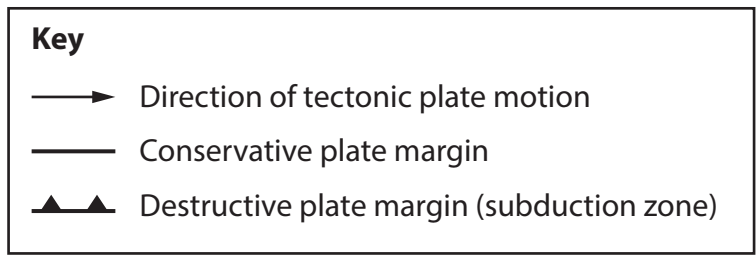
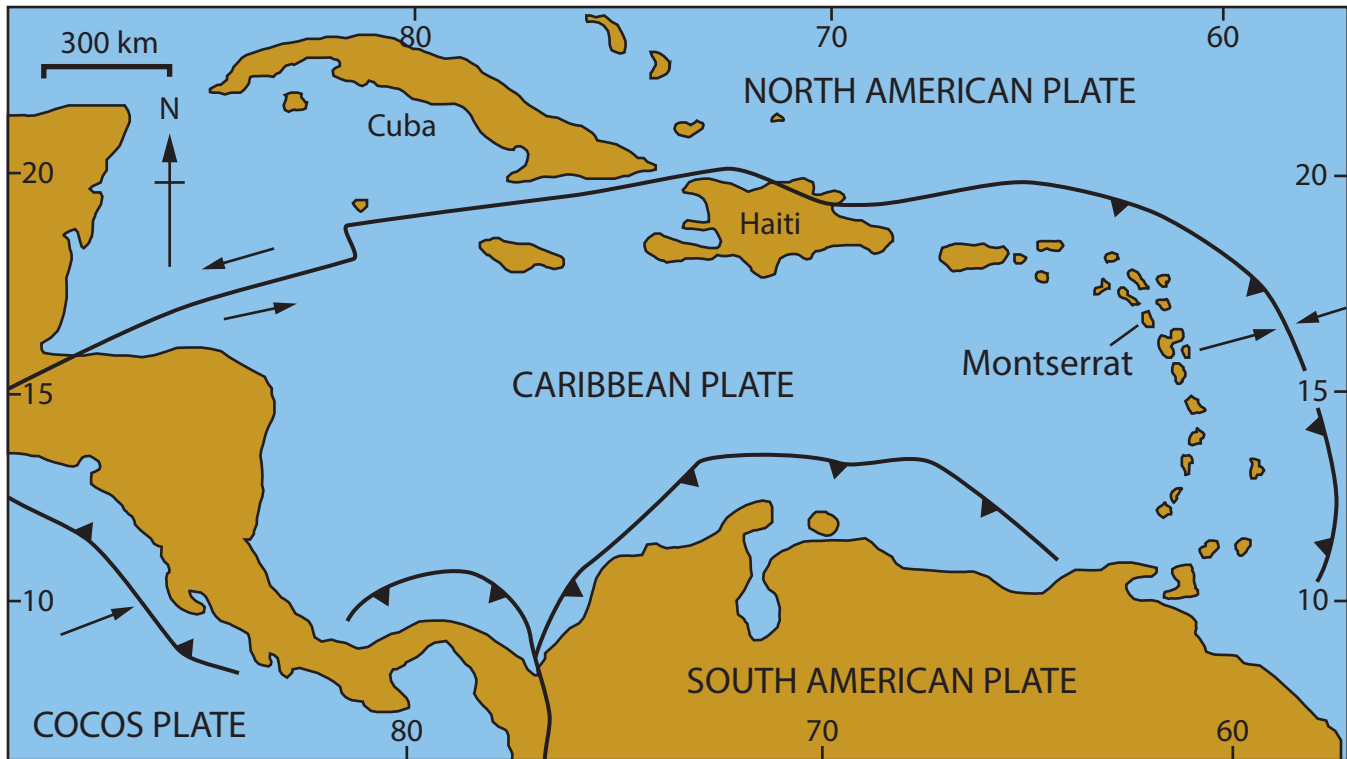


Figure 1

A tectonic map of the Caribbean

The following resource relates to Question 2.

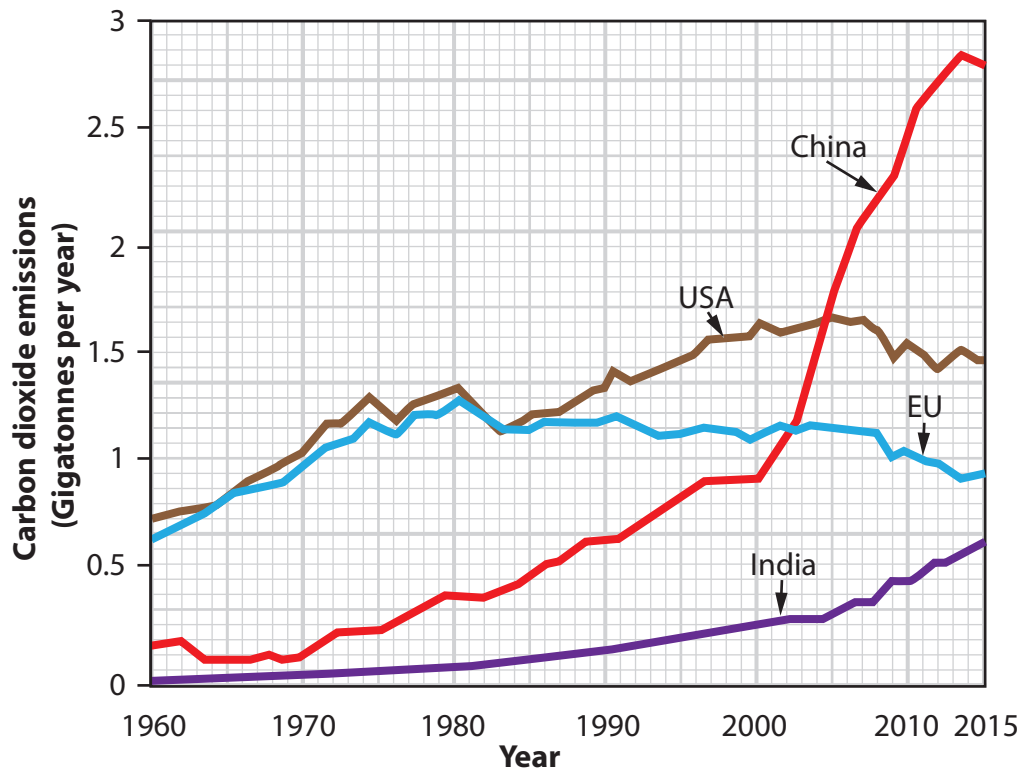


Figure 2

Carbon dioxide emissions for selected countries and the EU from 1960 to 2015

The following resource relates to Question 3.

World regions	Tourist arrivals (millions)		
	1995	2015	2030 (projected)
Africa	19	53	134
North and South America	109	193	248
Asia	82	284	535
Europe	304	604	744
Middle East	13	56	149

Figure 3

International tourist arrivals for world regions

The following resource relates to Question 4.

Ten largest cities in 2016	Population (millions)	Ten largest cities projected to 2030	Projected population in 2030 (millions)
Tokyo (Japan)	38	Tokyo (Japan)	37
Delhi (India)	26	Delhi (India)	36
Shanghai (China)	25	Shanghai (China)	31
Mumbai (India)	21	Mumbai (India)	28
Sao Paulo (Brazil)	21	Beijing (China)	28
Beijing (China)	21	Dhaka (Bangladesh)	27
Mexico City (Mexico)	21	Karachi (Pakistan)	25
Osaka (Japan)	20	Cairo (Egypt)	25
Cairo (Egypt)	19	Lagos (Nigeria)	24
New York (USA)	19	Mexico City (Mexico)	24

Key: - developed country - emerging country - developing country

Figure 4

The ten largest cities ranked by population size in 2016 and projected to 2030

SECTION B

The following resource relates to Question 5.

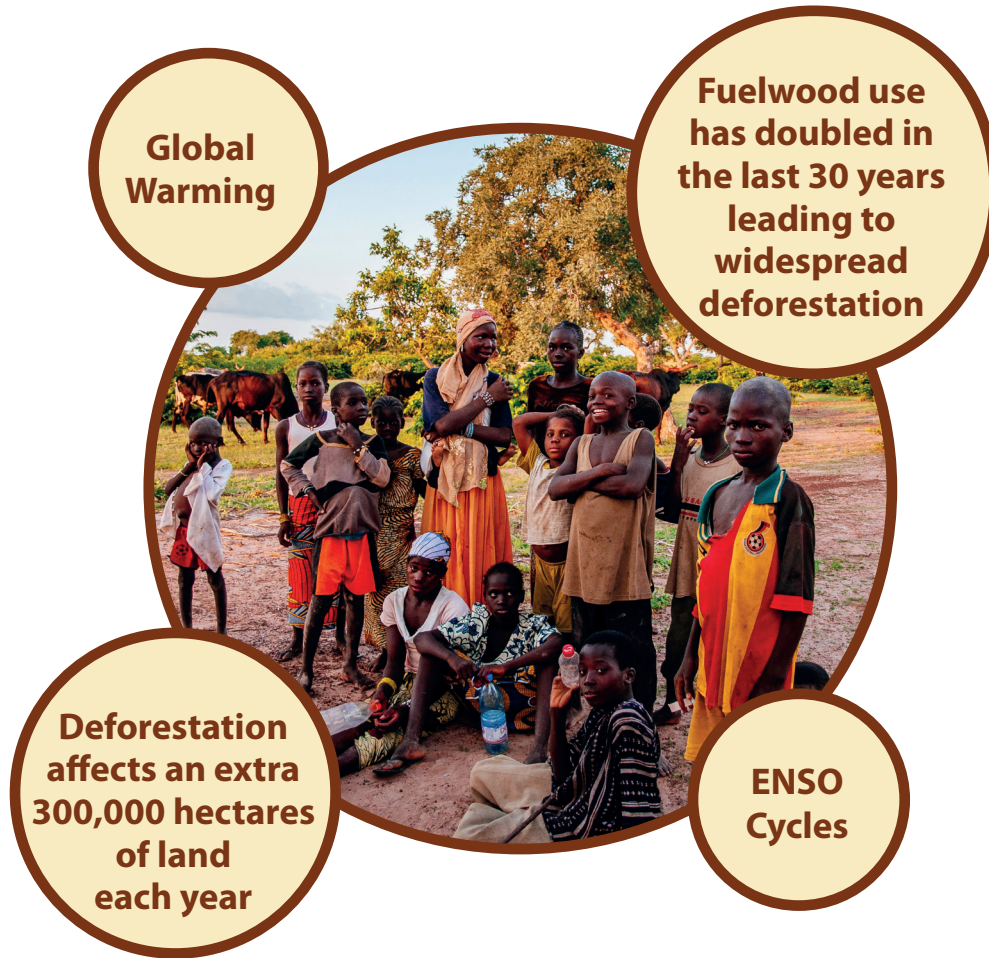


Figure 5

Factors contributing to drought risk in the Sahel

The following resource relates to Question 6.

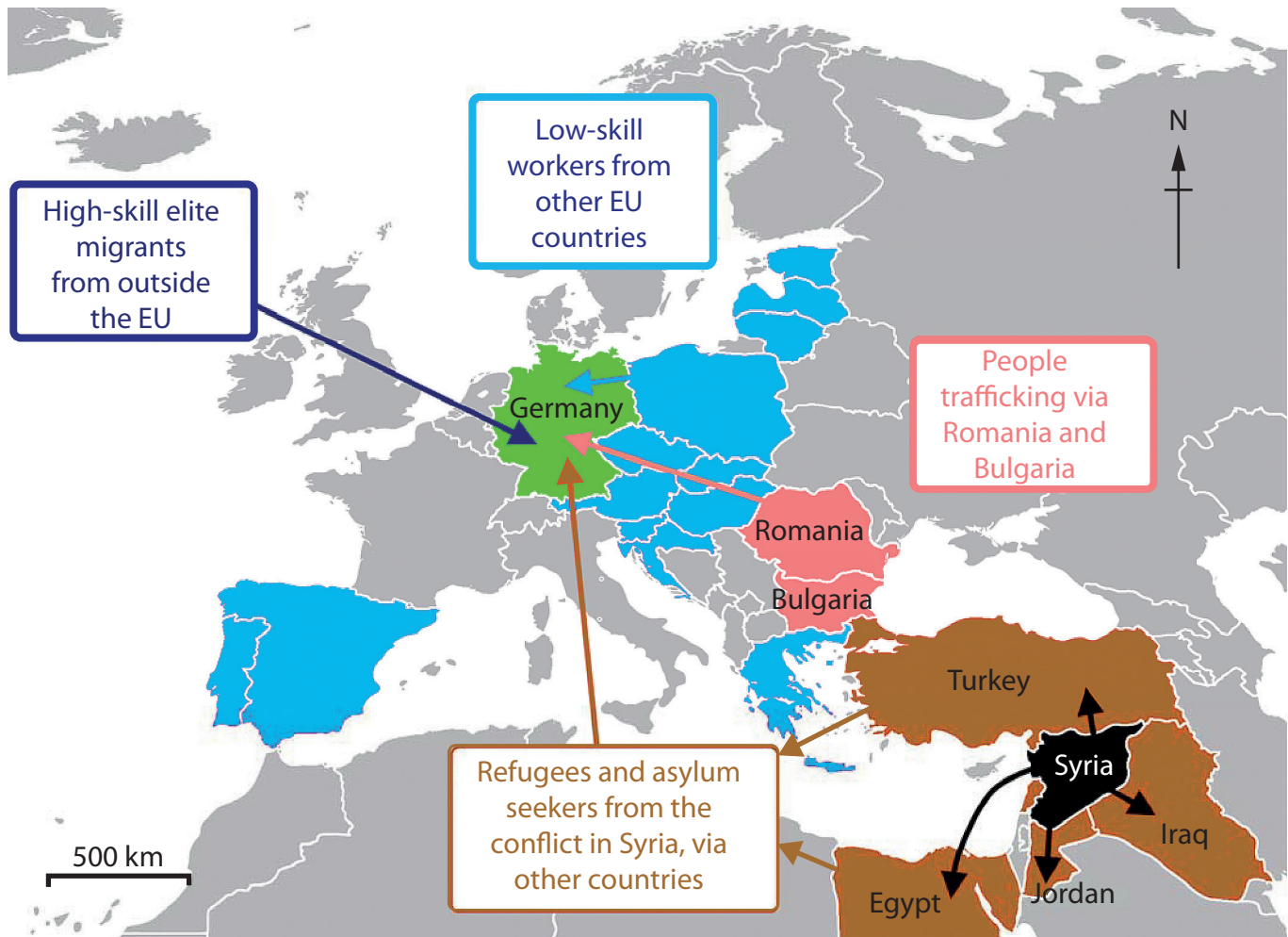


Figure 6

Recent migrant flows to Germany, an EU country

BLANK PAGE

Sources:

Figure 5 - © Raquel Maria Carbonell Pagola / Getty Images