



UNIVERSITY OF CAMBRIDGE INTERNATIONAL EXAMINATIONS  
General Certificate of Education Advanced Subsidiary Level and Advanced Level

---

**GEOGRAPHY**

**9696/12**

Paper 1 Core Geography

**May/June 2013**

INSERT

**3 hours**

---

**READ THESE INSTRUCTIONS FIRST**

This Insert contains all the Figures and the Tables referred to in the questions.

---

This document consists of **6** printed pages and **2** blank pages.



Fig. 1 for Question 1

Some features of a meandering river channel

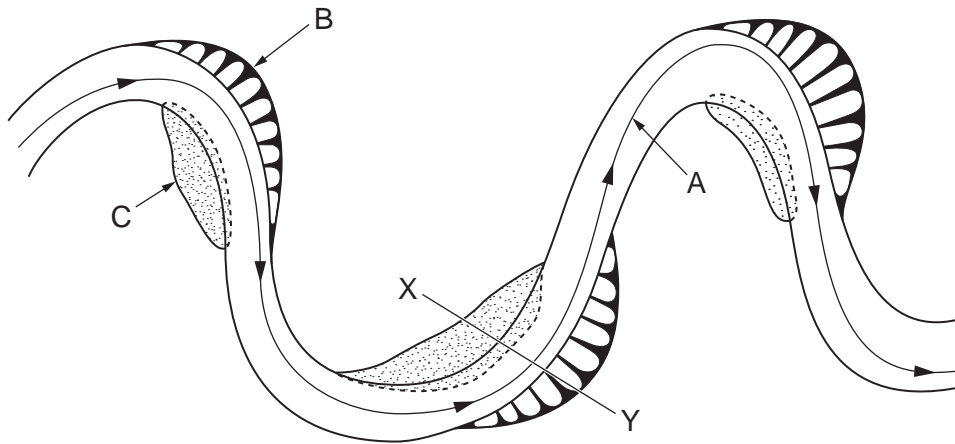


Fig. 2 for Question 2

Hadley cells

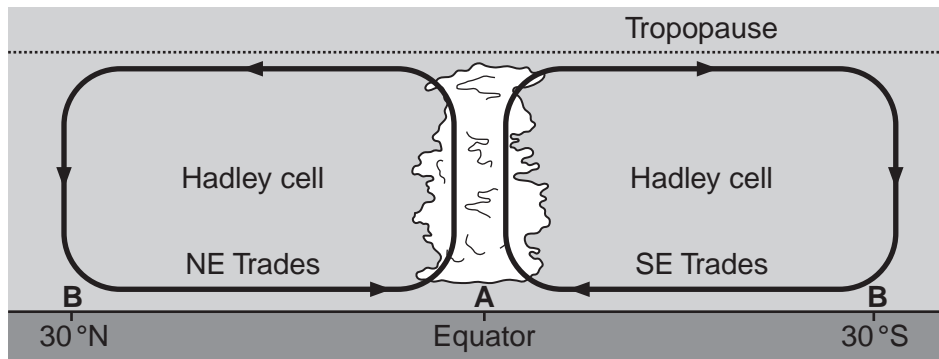
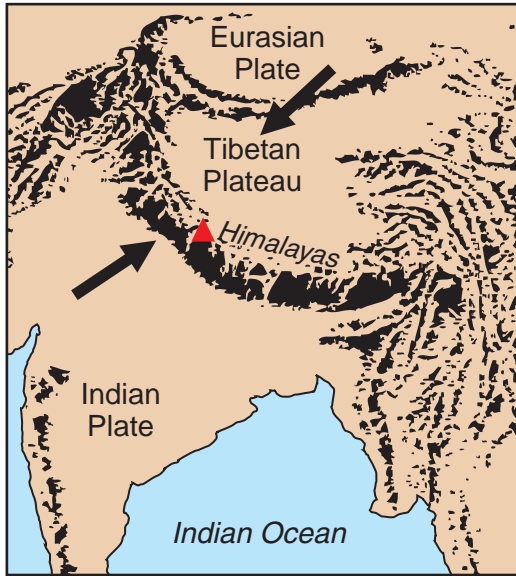


Fig. 3 for Question 3

Some landforms at a plate boundary



0 500 kms

Key



mountain chains



direction of plate movement



Mount Everest

## Tables 1A and 1B for Question 4

## Highest and lowest mortality rates, for ages 15–60 years, 2010

Table 1A

## Highest mortality rates

country	male mortality rate per 1000	country	female mortality rate per 1000
Swaziland	764	Zambia	605
Zambia	733	Swaziland	595
Lesotho	727	Zimbabwe	577
Zimbabwe	725	Lesotho	524
Malawi	696	Malawi	517

Table 1B

## Lowest mortality rates

country	male mortality rate per 1000	country	female mortality rate per 1000
Switzerland	74	Italy	41
Netherlands	73	Greece	41
Malta	73	Japan	41
Sweden	71	South Korea	40
Iceland	65	Cyprus	38

Fig. 4 for Question 5

## Population increase in an MEDC in Europe, 1997–2007

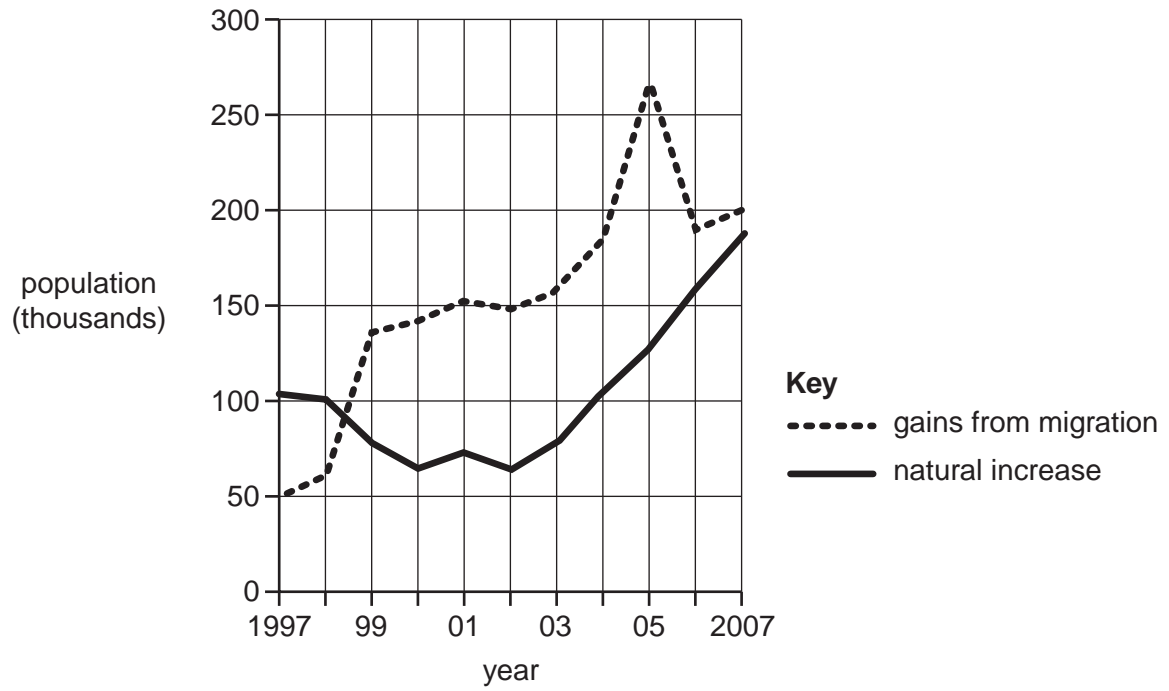
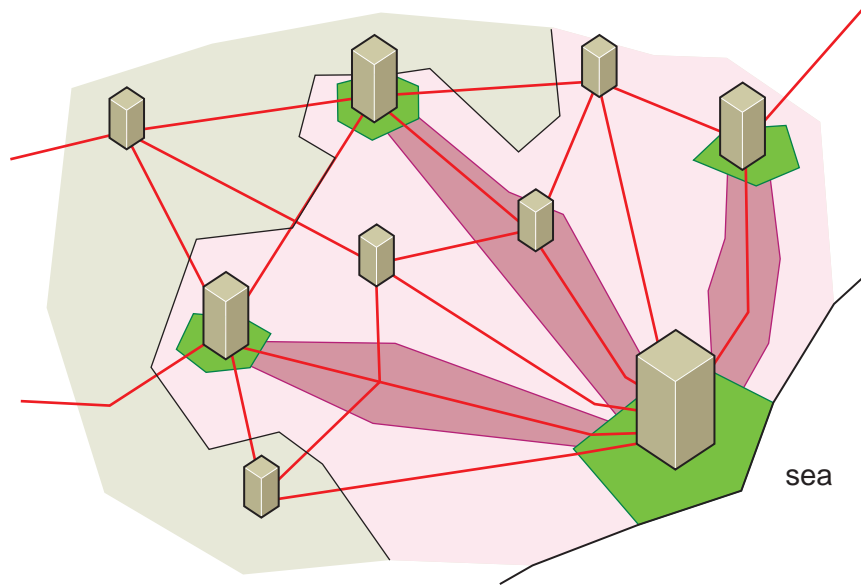
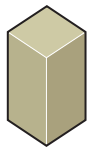


Fig. 5 for Question 6

## A model of urban development



## Key



major city



secondary city



small city or town



urban periphery



urban sprawl



densely populated rural area



sparsely populated frontier area



main road



**BLANK PAGE**

---

Permission to reproduce items where third-party owned material protected by copyright is included has been sought and cleared where possible. Every reasonable effort has been made by the publisher (UCLES) to trace copyright holders, but if any items requiring clearance have unwittingly been included, the publisher will be pleased to make amends at the earliest possible opportunity.

University of Cambridge International Examinations is part of the Cambridge Assessment Group. Cambridge Assessment is the brand name of University of Cambridge Local Examinations Syndicate (UCLES), which is itself a department of the University of Cambridge.