



UNIVERSITY OF CAMBRIDGE INTERNATIONAL EXAMINATIONS
General Certificate of Education Advanced Subsidiary Level and Advanced Level

GEOGRAPHY

9696/03

Paper 3 Advanced Human Options

October/November 2008

INSERT

1 hour 30 minutes

READ THESE INSTRUCTIONS FIRST

This Insert contains all the Figures and the Table referred to in the questions.

This document consists of **4** printed pages.



Fig. 1 for Question 1

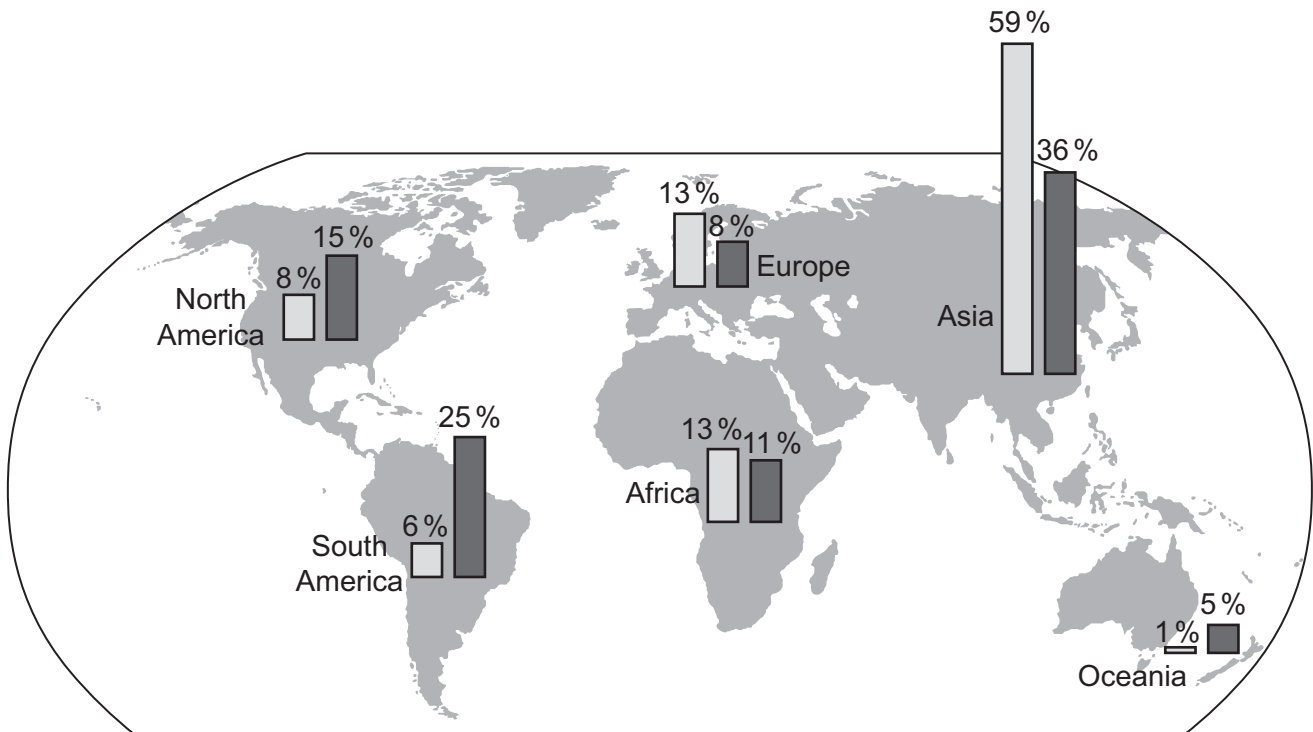
Seven possible components of “a second green revolution” for India

Improvements in:

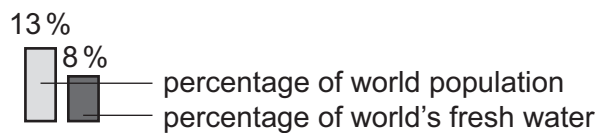
- 1 soil health
- 2 water management
- 3 access to affordable credit
- 4 the development and introduction of appropriate technologies
- 5 the marketing of produce
- 6 seeds, through the application of science and biotechnology
- 7 government commitment to the agricultural sector and to agricultural research.

Fig. 2 for Question 4

Population and fresh water, by world region, 2003



Key



Figs 3A, 3B and 3C for Question 6

Possible levels of demand for, and supply of, tourism services in a tourist area or resort

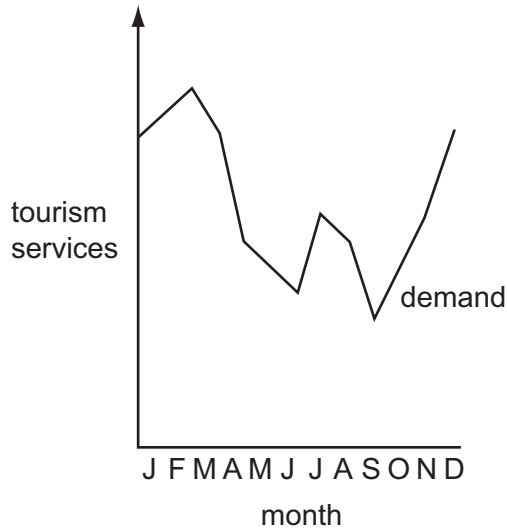


Fig. 3A

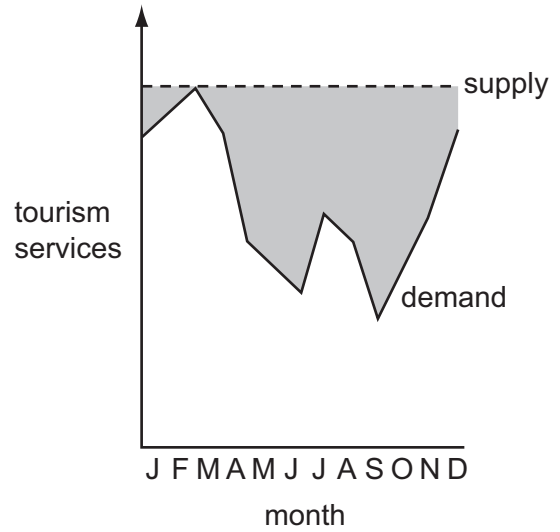


Fig. 3B

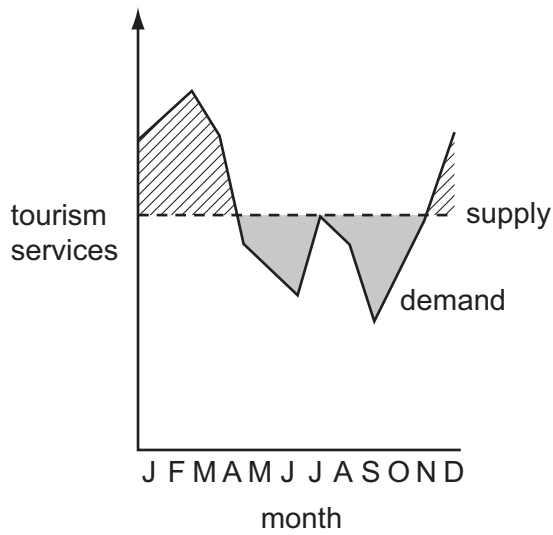
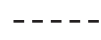


Fig. 3C

Key



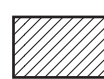
demand



supply



low occupancy
and loss of
potential revenue



overcrowding
and loss of
potential revenue

Table 1 for Question 7

Percentage employment by sector for the world and selected world regions, 1994 and 2004

	1994			2004		
	P	S	T	P	S	T
<i>World</i>	45.6	21.3	33.1	42.8	20.3	36.9
MEDCs	5.3	29.0	65.7	3.9	24.9	71.2
East Asia	57.7	26.3	16.0	57.7	23.6	18.7
SE Asia and the Pacific	55.8	14.8	29.4	44.3	20.3	35.4
South Asia	64.5	13.3	22.2	62.2	13.7	24.1
Latin America and the Caribbean	24.3	20.3	55.4	17.6	20.2	62.2
Middle East and North Africa	29.7	20.7	49.6	25.7	27.2	47.1
Sub-Saharan Africa	71.0	8.5	20.5	64.5	8.8	26.7

Key

- P** primary sector (excluding mining)
S secondary sector (including mining)
T tertiary sector (including quaternary)

Permission to reproduce items where third-party owned material protected by copyright is included has been sought and cleared where possible. Every reasonable effort has been made by the publisher (UCLES) to trace copyright holders, but if any items requiring clearance have unwittingly been included the publisher will be pleased to make amends at the earliest possible opportunity.

University of Cambridge International Examinations is part of the Cambridge Assessment Group. Cambridge Assessment is the brand name of University of Cambridge Local Examinations Syndicate (UCLES), which is itself a department of the University of Cambridge.