

Surname						Other Names					
Centre Number						Candidate Number					
Candidate Signature											

Leave blank

General Certificate of Education
 June 2006
 Advanced Subsidiary Examination



GEOGRAPHY (SPECIFICATION B)
Unit 1 The Dynamics of Change

GGB1

Friday 26 May 2006 1.30 pm to 2.30 pm

You will need no other materials.
 You may use a calculator.

Time allowed: 1 hour

Instructions

- Use blue or black ink or ball-point pen. You may use pencil for maps, diagrams and graphs.
- Fill in the boxes at the top of this page.
- Answer **all** questions.
- Answer the questions in the spaces provided.
- Do all rough work in this book. Cross through any work you do not want marked.
- Give sketch maps, diagrams and specific examples, where appropriate.

Information

- The maximum mark for this paper is 60.
- The marks for questions are shown in brackets.
- You are reminded of the need for good English and clear presentation in your answers. All questions should be answered in continuous prose. Quality of Written Communication will be assessed in all answers.

For Examiner's Use			
Number	Mark	Number	Mark
1		3	
2		4	
Total (Column 1) →			
Total (Column 2) →			
TOTAL			
Examiner's Initials			

Answer **all** questions in the spaces provided.

Total for this question: 10 marks

1 Using examples from an investigation that you have undertaken,

(a) Outline the aim(s) of your investigation and state **two** hypotheses that were established as a basis of the investigation.

.....

.....

.....

.....

.....

.....

(3 marks)

(b) Describe a method of data analysis that was used in your investigation and state the advantages of using that method.

.....

.....

.....

.....

.....

.....

.....

.....

.....

.....

.....

.....

.....

.....

.....

(7 marks)

10

Turn over for the next question

Turn over ►

Total for this question: 17 marks

2 (a) Outline an optimistic approach to the relationship between population and resources.

.....

.....

.....

.....

.....

.....

.....

.....

.....

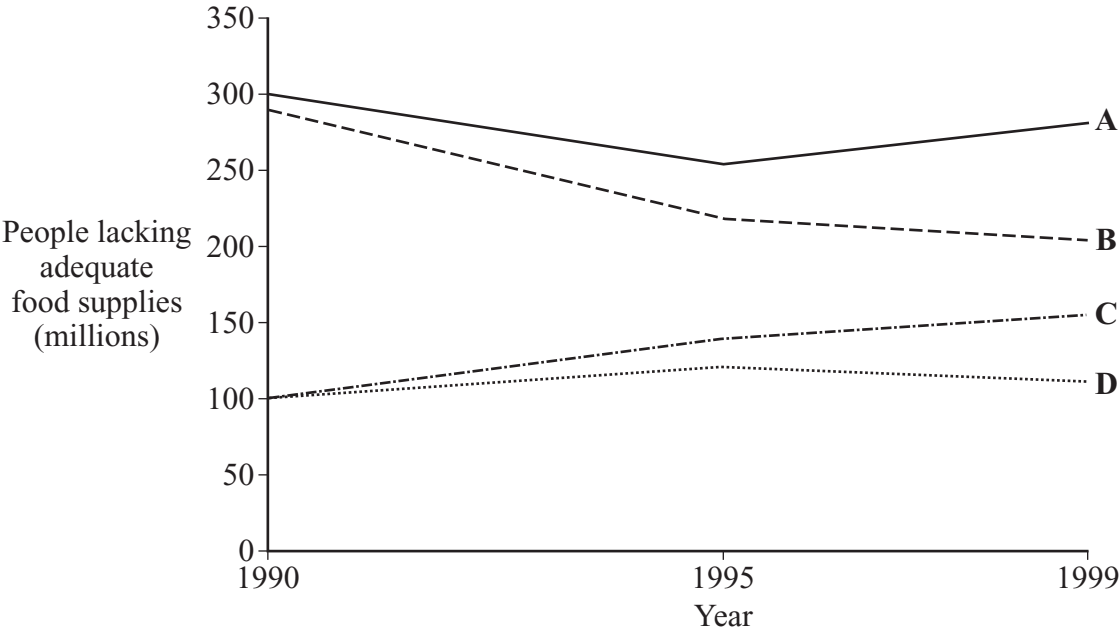
.....

.....

(5 marks)

(b) In 2003 the Food and Agriculture Organisation published a report on trends in food shortages between 1990 and 1999. The report divided the 84 countries studied into four separate groups (A, B, C, D). Study **Figure 1** which shows these trends.

Figure 1



Describe the trends shown in **Figure 1** and comment on the extent to which these data would support an optimistic approach to population and resource issues.

.....

.....

.....

.....

.....

.....

.....

.....

.....

.....

.....

.....

.....

.....

.....

.....

.....

.....

.....

.....

(7 marks)

Question 2 continues on the next page

(c) Choose **one** energy system based upon the use of a **renewable resource** and suggest reasons why that system was developed.

.....

.....

.....

.....

.....

.....

.....

.....

.....

.....

.....

(5 marks)

Turn over for the next question

Turn over ►

Total for this question: 17 marks

- 3** (a) In the last 30 years the percentage of the UK workforce employed in manufacturing declined very significantly.

Outline the factors that may have influenced this overall decline and suggest why the scale of the decline has varied between different regions in the UK.

.....

.....

.....

.....

.....

.....

.....

.....

.....

.....

.....

.....

.....

.....

.....

.....

.....

.....

.....

.....

.....

.....

(10 marks)

(b) With reference to examples, show how changes in age structure and household composition have influenced the size, type and location of housing developments within urban areas in the last 30 years.

.....

.....

.....

.....

.....

.....

.....

.....

.....

.....

.....

.....

.....

.....

.....

.....

.....

.....

.....

.....

.....

.....

(7 marks)

<hr/> 17

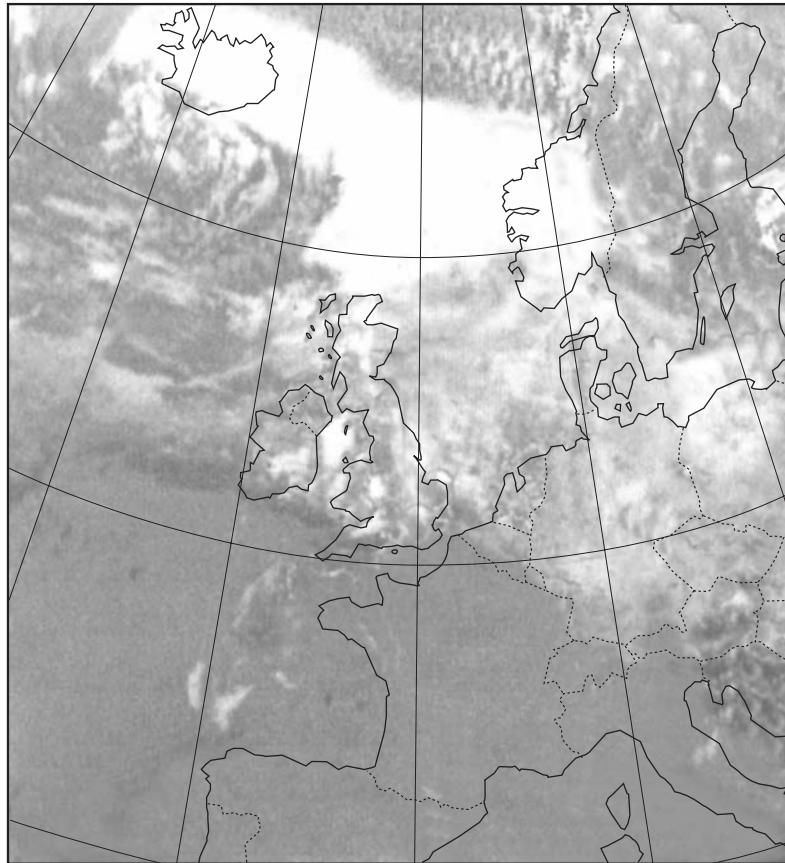
Turn over for the next question

Turn over ►

Total for this question: 16 marks

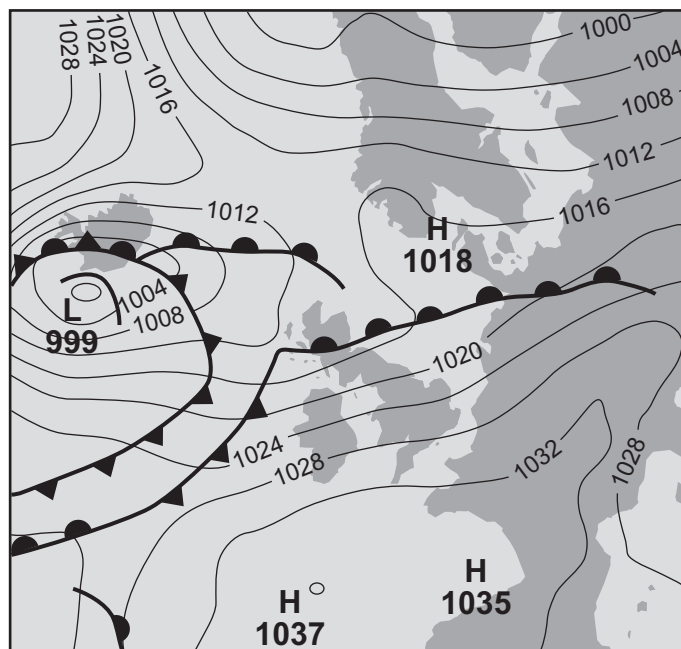
- 4 (a) Study **Figures 2a** and **2b**, a satellite image showing cloud cover and a synoptic chart for the British Isles and surrounding areas at 07.30 hours on 16 November, 2004.

Figure 2a



© 2004 EUMETSAT

Figure 2b



Describe, and suggest reasons for, the variations in the amount of cloud cover shown on **Figure 2a**.

.....

.....

.....

.....

.....

.....

.....

.....

.....

.....

.....

.....

(5 marks)

(b) Describe and suggest reasons for changes in the weather associated with the passage of a depression across the British Isles.

.....

.....

.....

.....

.....

.....

.....

.....

.....

Question 4 continues on the next page

Turn over ►

.....
.....
.....
.....
.....
.....

(7 marks)

(c) (i) What is meant by the term ‘infiltration’ in relation to drainage basin hydrology?

.....
.....
.....
.....

(2 marks)

(ii) Give **two** factors that influence the rate of infiltration.

.....
.....
.....
.....

(2 marks)

END OF QUESTIONS

QUESTION
NUMBER

Write the question number in the left-hand margin.

Area with horizontal dotted lines for writing.

Turn over ►

QUESTION
NUMBER

Write the question number in the left-hand margin.

A series of horizontal dotted lines for writing.

QUESTION
NUMBER

Write the question number in the left-hand margin.

A series of horizontal dotted lines for writing.

There are no questions printed on this page

ACKNOWLEDGEMENT OF COPYRIGHT-HOLDERS AND PUBLISHERS

Permission to reproduce all copyright material has been applied for. In some cases, efforts to contact copyright-holders have been unsuccessful and AQA will be happy to rectify any omissions of acknowledgements in future papers if notified.

Question 2 Figure 1 *The State of Food Insecurity in The World 2003 – Recent trends in undernourishment, by country groupings.*
The Food and Agriculture Organization of the United Nations.

Question 4 Figure 2b © Crown copyright 2004. Published by the Met Office.

Copyright © 2006 AQA and its licensors. All rights reserved.