

Surname						Other Names					
Centre Number						Candidate Number					
Candidate Signature											

For Examiner's Use

General Certificate of Education
 June 2007
 Advanced Subsidiary Examination



GEOGRAPHY (SPECIFICATION A)
Unit 3 Geographical Skills

GGA3

Friday 25 May 2007 1.30 pm to 2.30 pm

For this paper you must have:

- the resource booklet (enclosed).

You may use a calculator.

For Examiner's Use			
Question	Mark	Question	Mark
1			
2			
Total (Column 1)		→	
Total (Column 2)		→	
TOTAL			
Examiner's Initials			

Time allowed: 1 hour

Instructions

- Use blue or black ink or ball-point pen. You may use pencil for maps, diagrams and graphs.
- Fill in the boxes at the top of this page.
- Answer **one** question, **either** Question 1 in Section A, **or** Question 2 in Section B.
- Do all rough work in this book. Cross through any work you do not want to be marked.

Information

- The maximum mark for this paper is 50.
- The marks for questions are shown in brackets.
- You are expected to use a calculator where appropriate.
- You will be marked on your ability to use an appropriate form and style of writing, to organise relevant information clearly and coherently, and to use specialist vocabulary where appropriate. The legibility of your handwriting and the accuracy of your spelling, punctuation and grammar will also be considered.

Advice

- Where appropriate, credit will be given for the use of diagrams and where reference is made to your personal investigative work.

Answer **one** question, **either** Question 1 in Section A, **or** Question 2 in Section B.

SECTION A

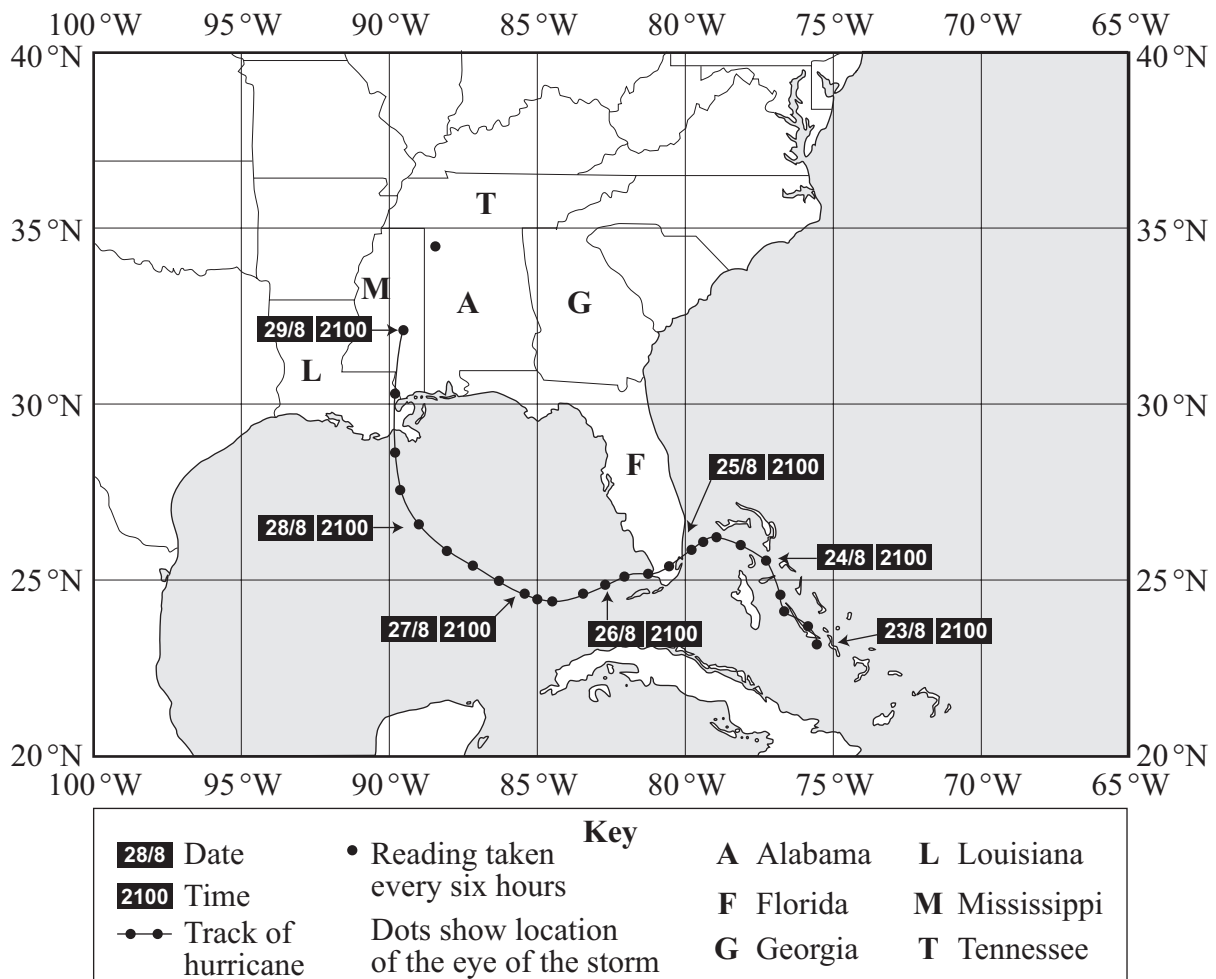
Answer **all** parts of this question in the spaces provided.

The Physical Environment

Title: Tropical Revolving Storms (Hurricanes)

- 1 (a) **Figure 1** partly shows the track of Hurricane Katrina in the Gulf of Mexico region in August 2005.

Figure 1



- (i) Complete **Figure 1** by adding the following information.

Date and Time	Latitude (°)	Longitude (°)
30/8 0300	33.5N	88.5W
30/8 1500	36.3N	87.5W

(4 marks)

(ii) **Figure 2** (*resource booklet*) is a satellite image of Hurricane Katrina.

Using both **Figures 1** and **2**, identify the date and time when the satellite image was taken and briefly justify your answer.

.....

.....

.....

.....

.....

.....

(3 marks)

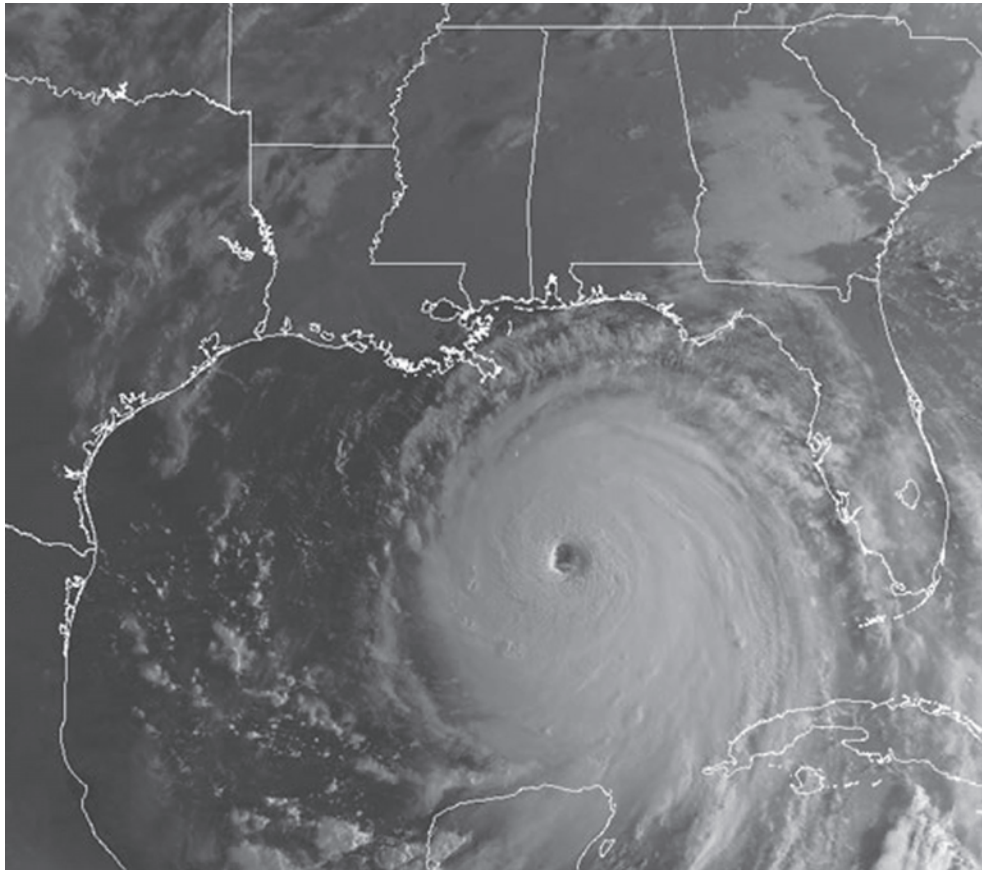
Question 1 continues on the next page

Turn over ►

(iii) **Figure 3** is a black and white photocopy of **Figure 2**.

Label **Figure 3** to show the features of Hurricane Katrina.

Figure 3

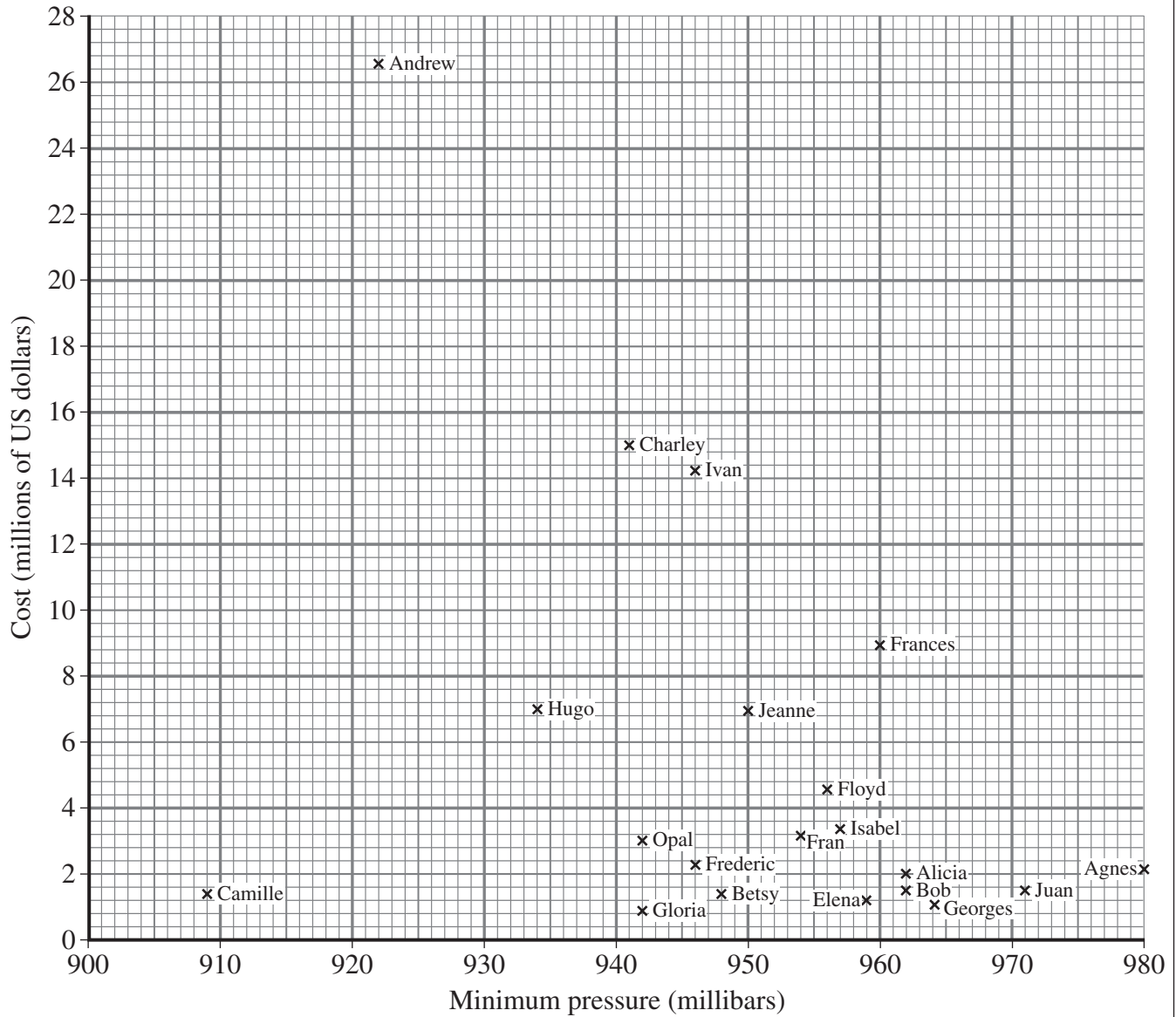


(6 marks)

(c) **Figure 5** shows the twenty most costly hurricanes to strike the mainland of the United States between 1900 and 2004 and the minimum pressures recorded.

(i) On **Figure 5**, add a best fit line and circle one anomalous result.

Figure 5



(3 marks)

(e) You have experienced geography fieldwork as part of the course.

- (i) For any geography fieldwork study that you have undertaken (either physical or human), briefly outline the aim of the study; state the study area and why it was a suitable location for your study.

Aim

.....

.....

Location of study area and why it was suitable

.....

.....

.....

(3 marks)

- (ii) For **one** item of primary data you collected for the study in (e)(i), outline the method of data collection and the usefulness of the data item in your fieldwork.

Item of primary data

Method of data collection

.....

.....

.....

.....

Usefulness of data item

.....

.....

.....

.....

(5 marks)

End of Section A

Do **not** answer this section if you have answered Question 1 in Section A.

SECTION B

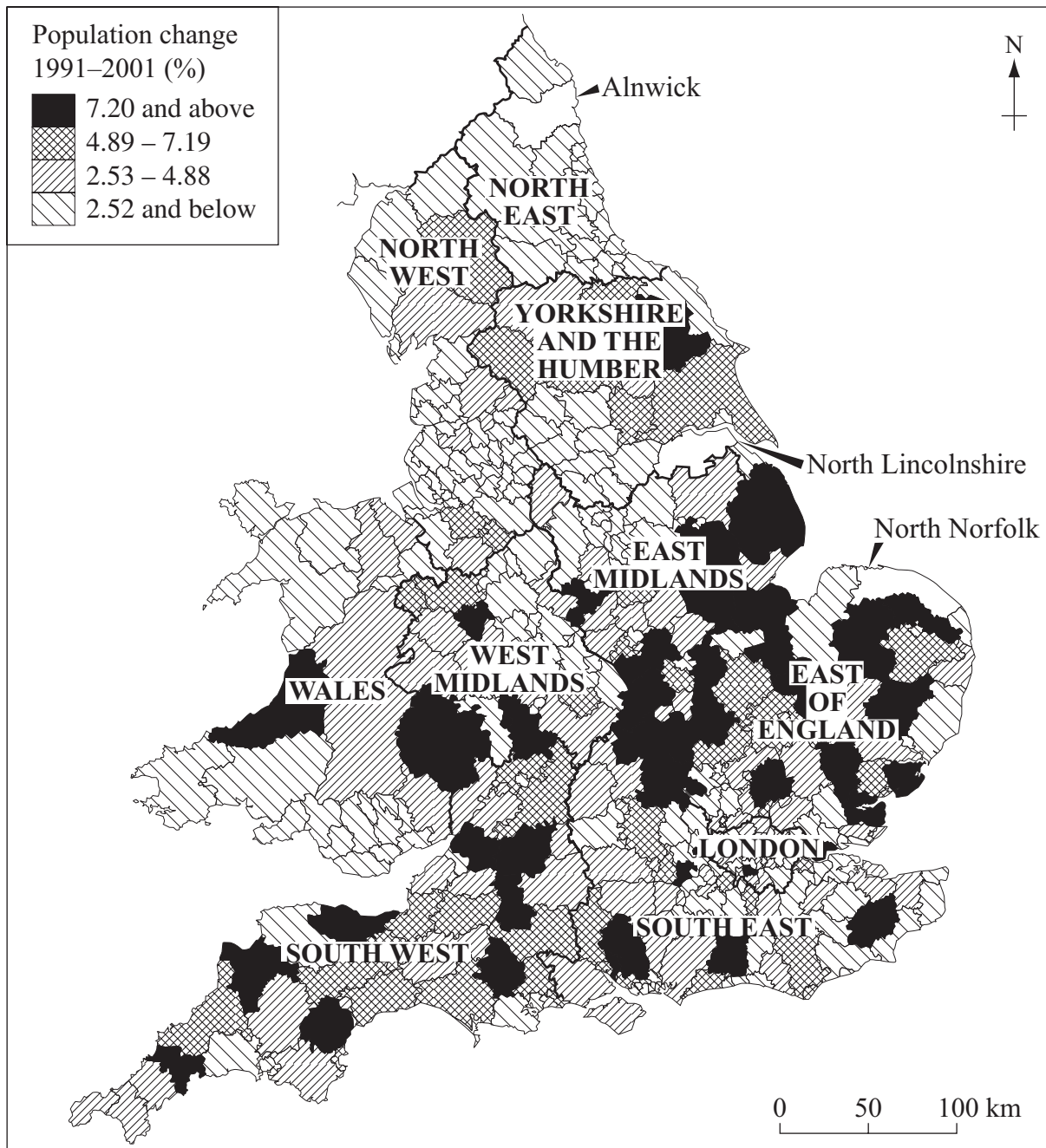
Answer **all** parts of this question in the spaces provided.

The Human Environment

Title: Population Change

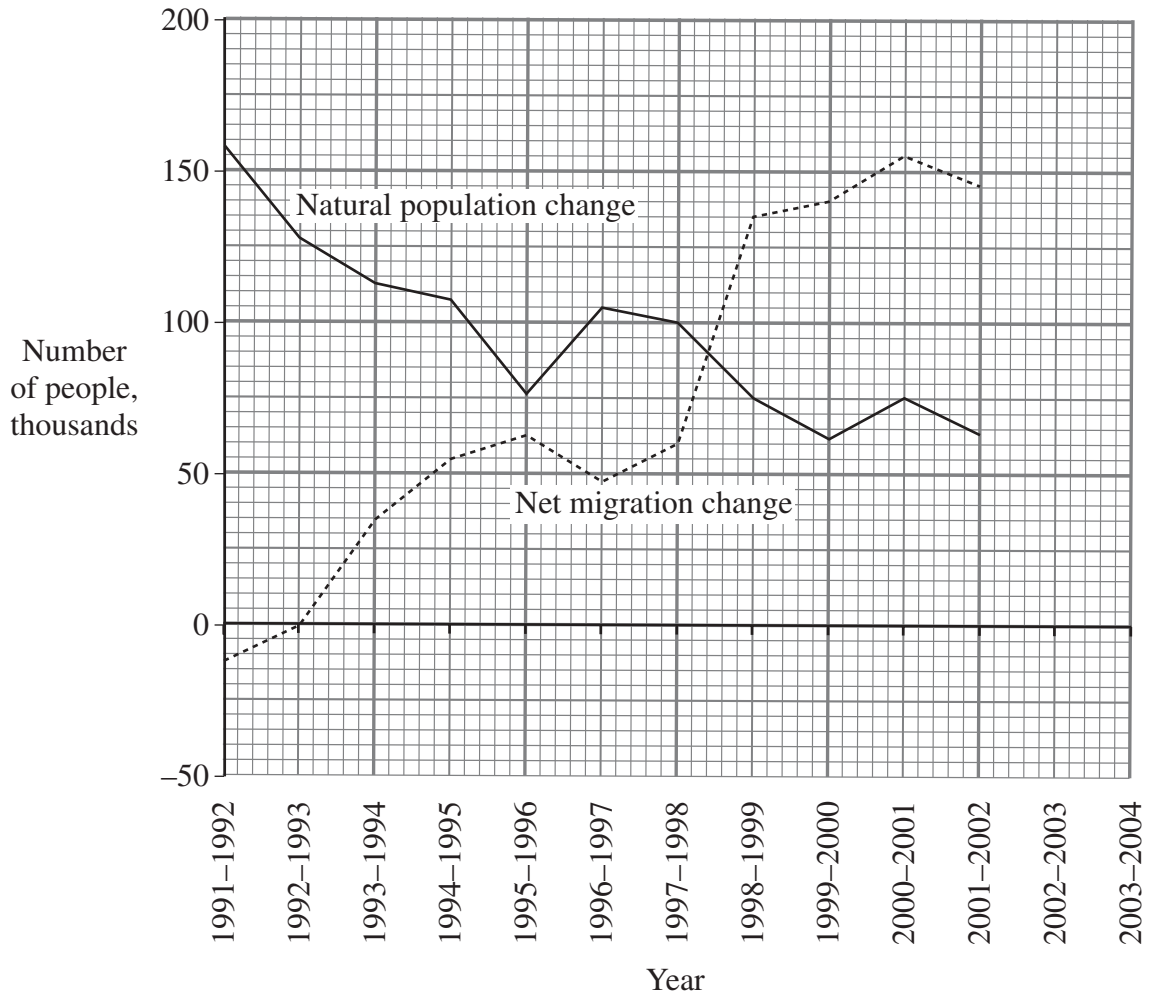
- 2 (a) **Figure 7** partly shows the percentage population change for local authorities in England and Wales between 1991 and 2001.

Figure 7



(b) **Figure 8** partly shows the components of population change in the UK between 1991 and 2004.

Figure 8



(i) Complete **Figure 8** by adding the following information.

Year	Natural population change	Net migration change
2002-2003	76 000	156 000
2003-2004	103 000	178 000

(3 marks)

(ii) Summarise the trends shown in **Figure 8**.

.....

.....

.....

.....

.....

.....

.....

.....

.....

.....

.....

.....

.....

.....

.....

.....

(6 marks)

Question 2 continues on the next page

Turn over ►

(d) **Figure 10** (*resource booklet*) shows population of concern to the United Nations High Commission for Refugees (UNHCR) by country of residence at the end of 2003.

Outline the advantages and disadvantages of the method used to display the information.

.....

.....

.....

.....

.....

.....

(3 marks)

Question 2 continues on the next page

(f) You have experienced geography fieldwork as part of the course.

(i) For any geography fieldwork study that you have undertaken (either physical or human), briefly outline the aim of the study; state the study area and why it was a suitable location for your study.

Aim

Location of study area and why it was suitable

(3 marks)

(ii) For **one** item of primary data you collected for the study in (f)(i), outline the method of data collection and the usefulness of the data item in your fieldwork.

Item of primary data

Method of data collection

Usefulness of data item

(5 marks)

END OF QUESTIONS

There are no questions printed on this page

There are no questions printed on this page

There are no questions printed on this page

ACKNOWLEDGEMENT OF COPYRIGHT-HOLDERS AND PUBLISHERS

Permission to reproduce all copyright material has been applied for. In some cases, efforts to contact copyright-holders have been unsuccessful and AQA will be happy to rectify any omissions of acknowledgements in future papers if notified.

Question 1	Figure 1:	www.nhc.noaa.gov
Question 1	Figure 3:	Courtesy of NOAA's National Weather Scheme
Question 1	Figure 5:	www.nhc.noaa.gov
Question 2	Figure 7 & 8:	Crown copyright material is reproduced with the permission of the Controller of the HMSO and the Queen's Printer for Scotland

Copyright © 2007 AQA and its licensors. All rights reserved.

General Certificate of Education
June 2007
Advanced Subsidiary Examination



GEOGRAPHY (SPECIFICATION A)
Unit 3 Geographical Skills

GGA3

Resource Booklet

Figure 2

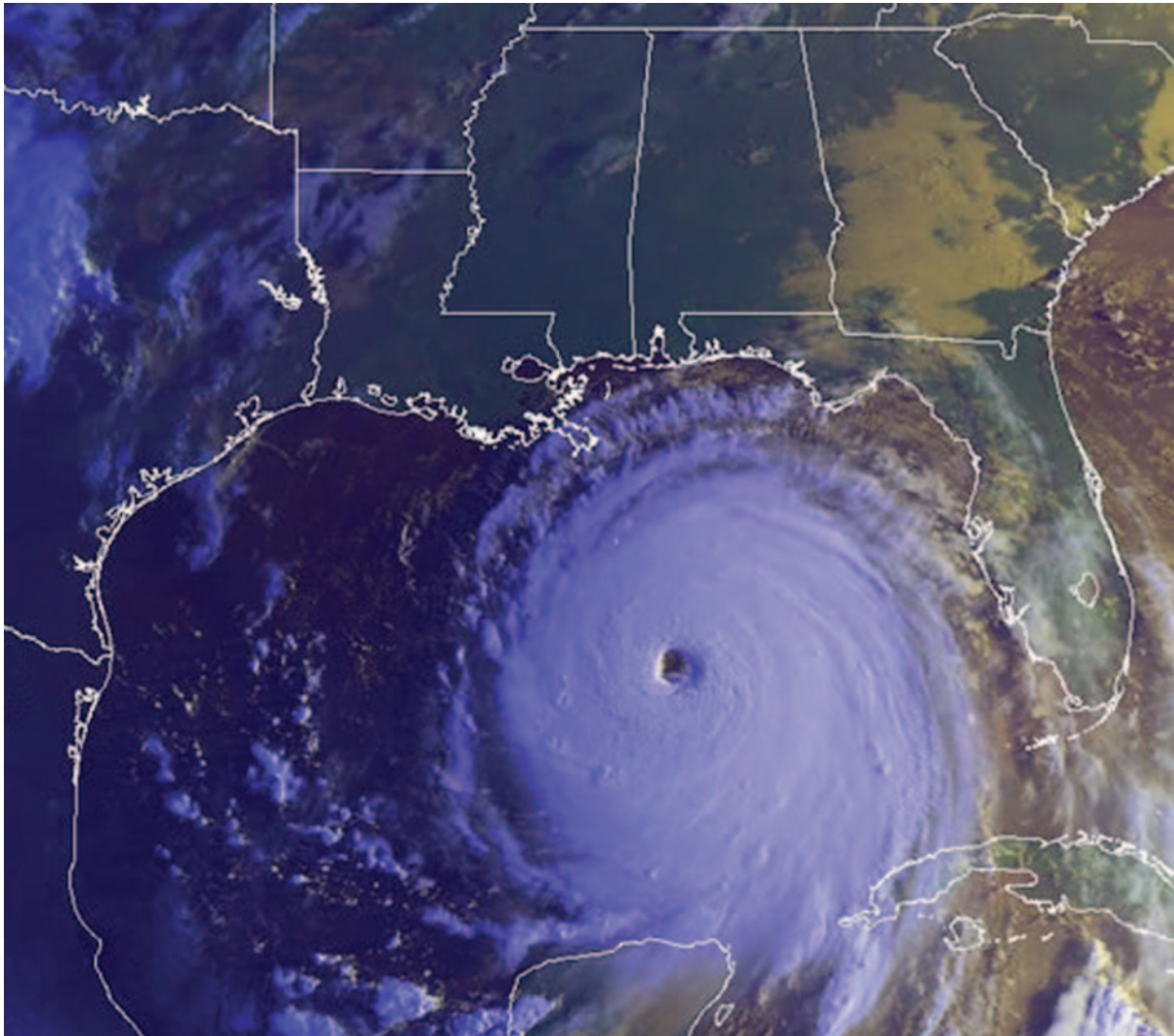


Figure 4a

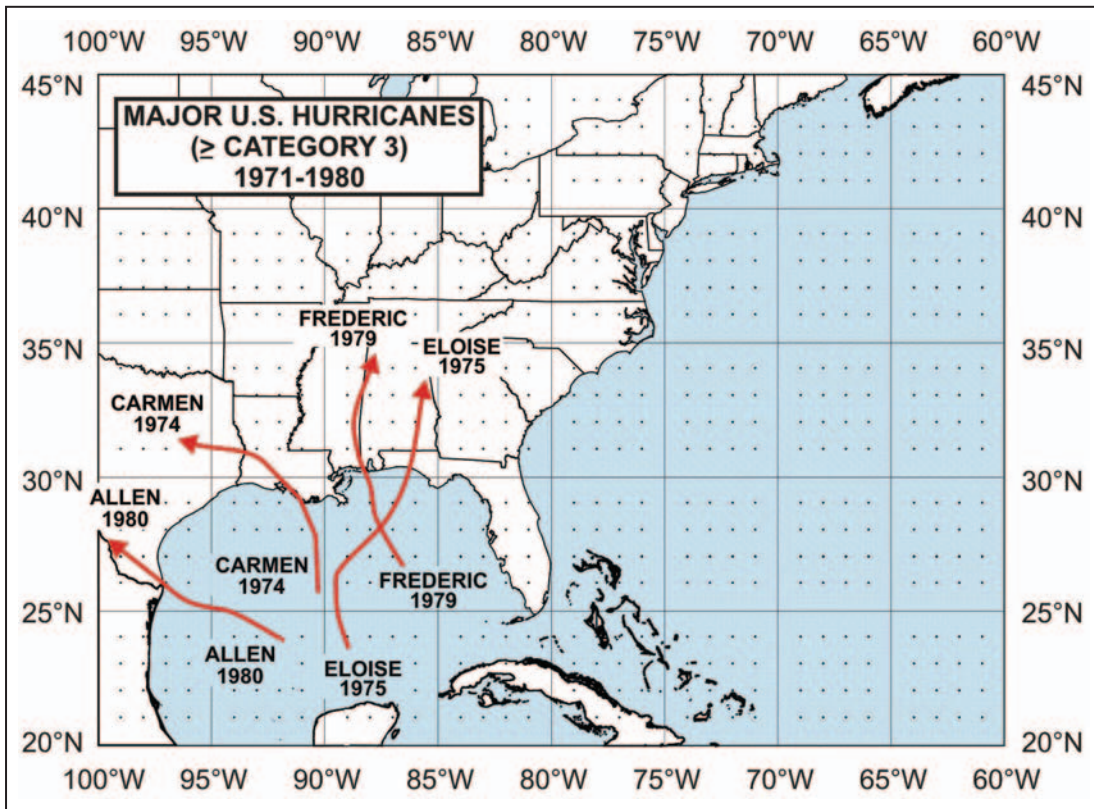


Figure 4b

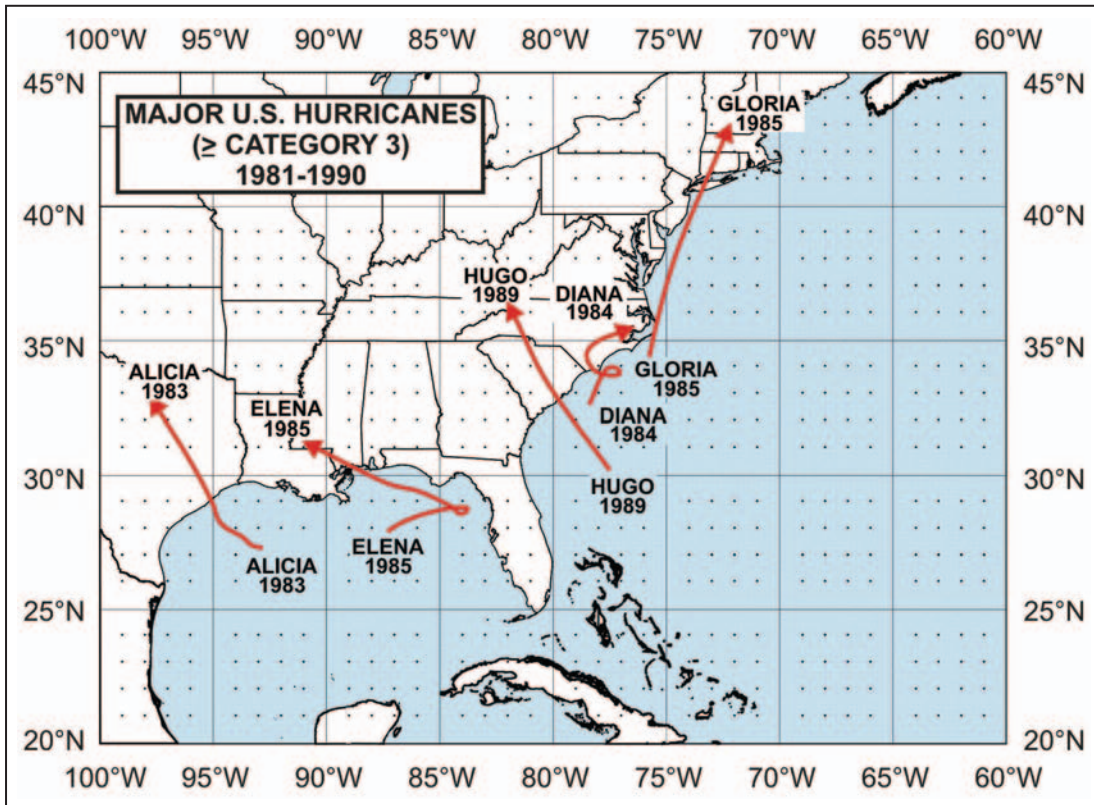


Figure 4c

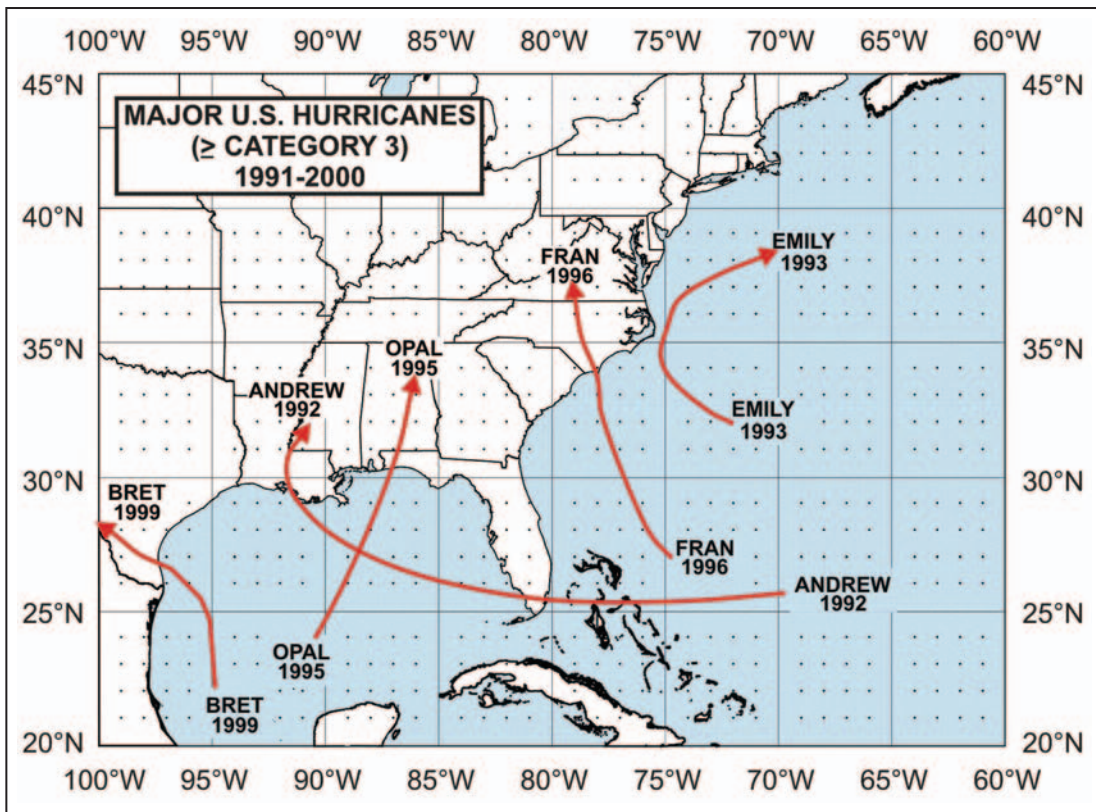
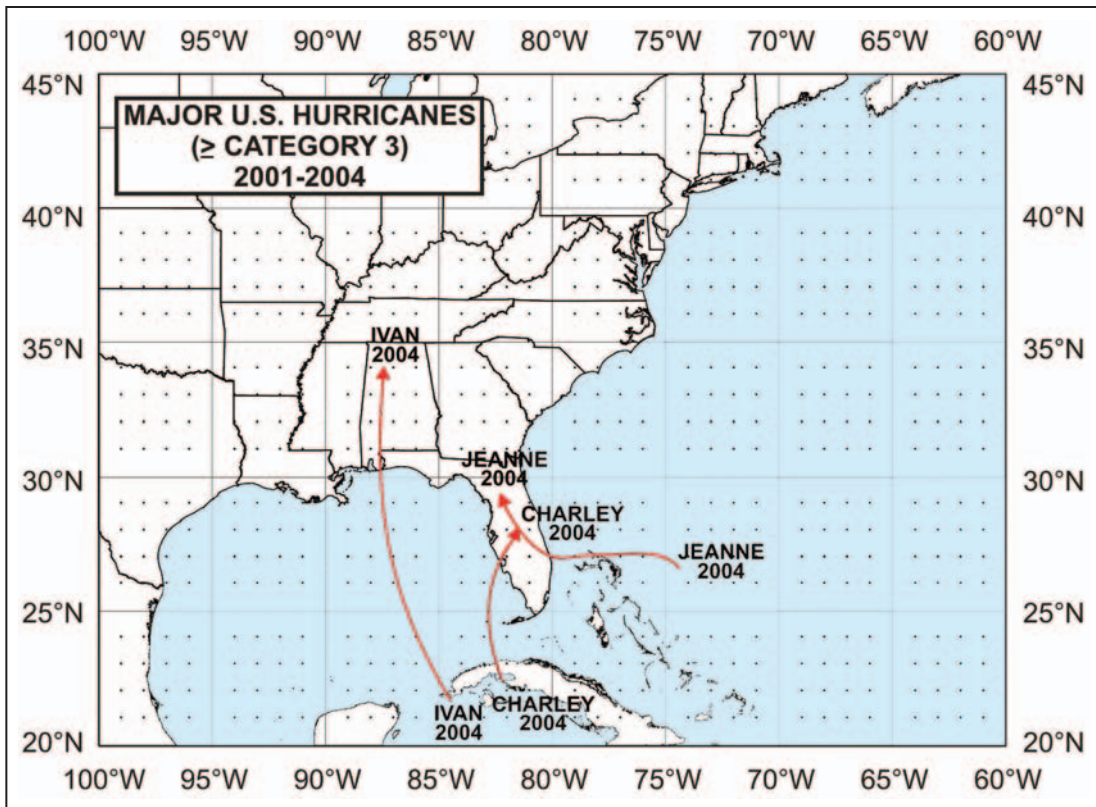


Figure 4d



Turn over ►

Figure 6

Newspaper article: extract from a newspaper report cataloguing the impact of and responses to Hurricane Katrina in New Orleans in the United States in 2005 - not reproduced here due to third-party copyright constraints.

Figure 6 (continued)

Turn over ►

Figure 9a
Average annual refugee population by country of origin 1999–2003

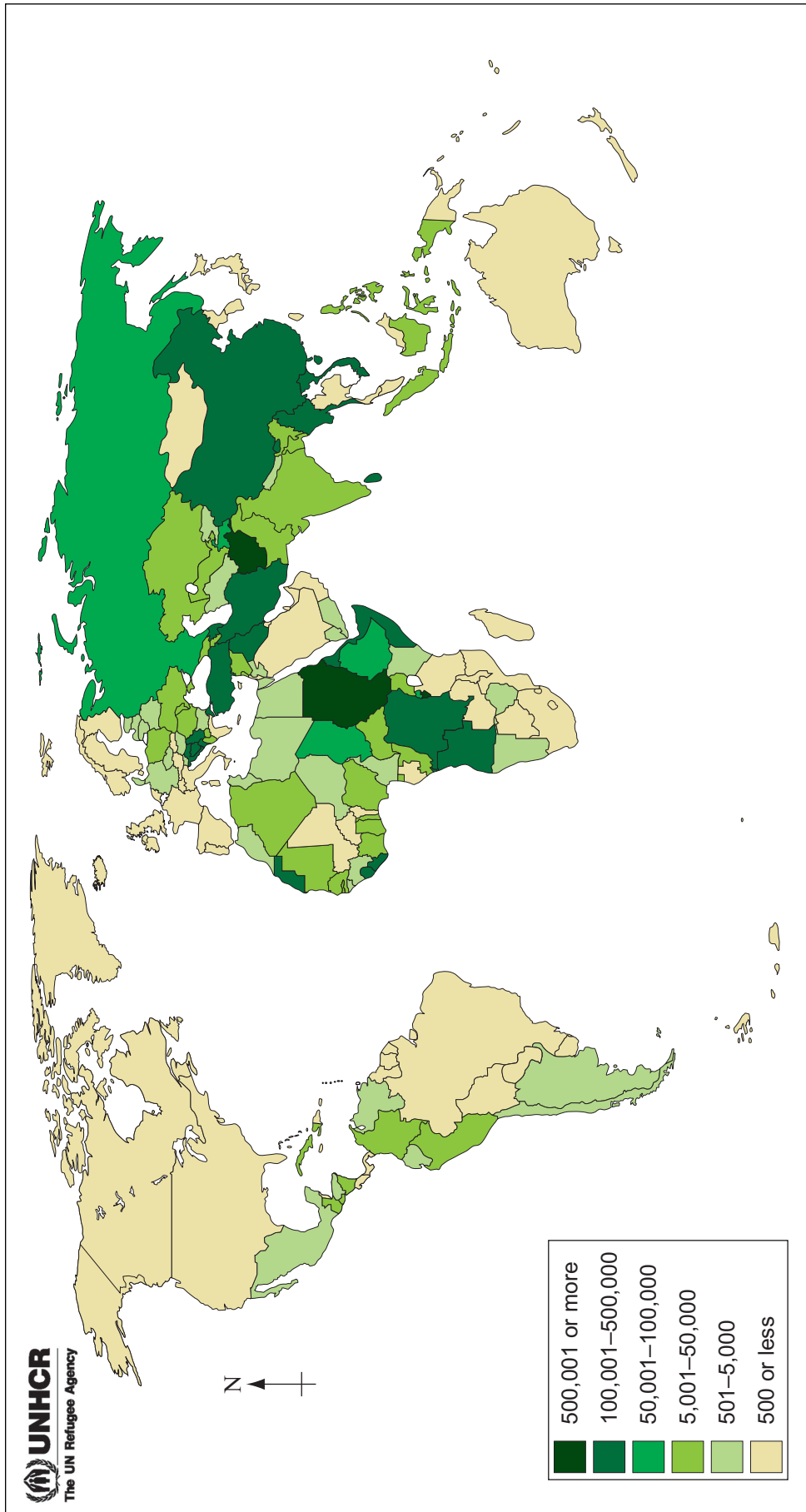
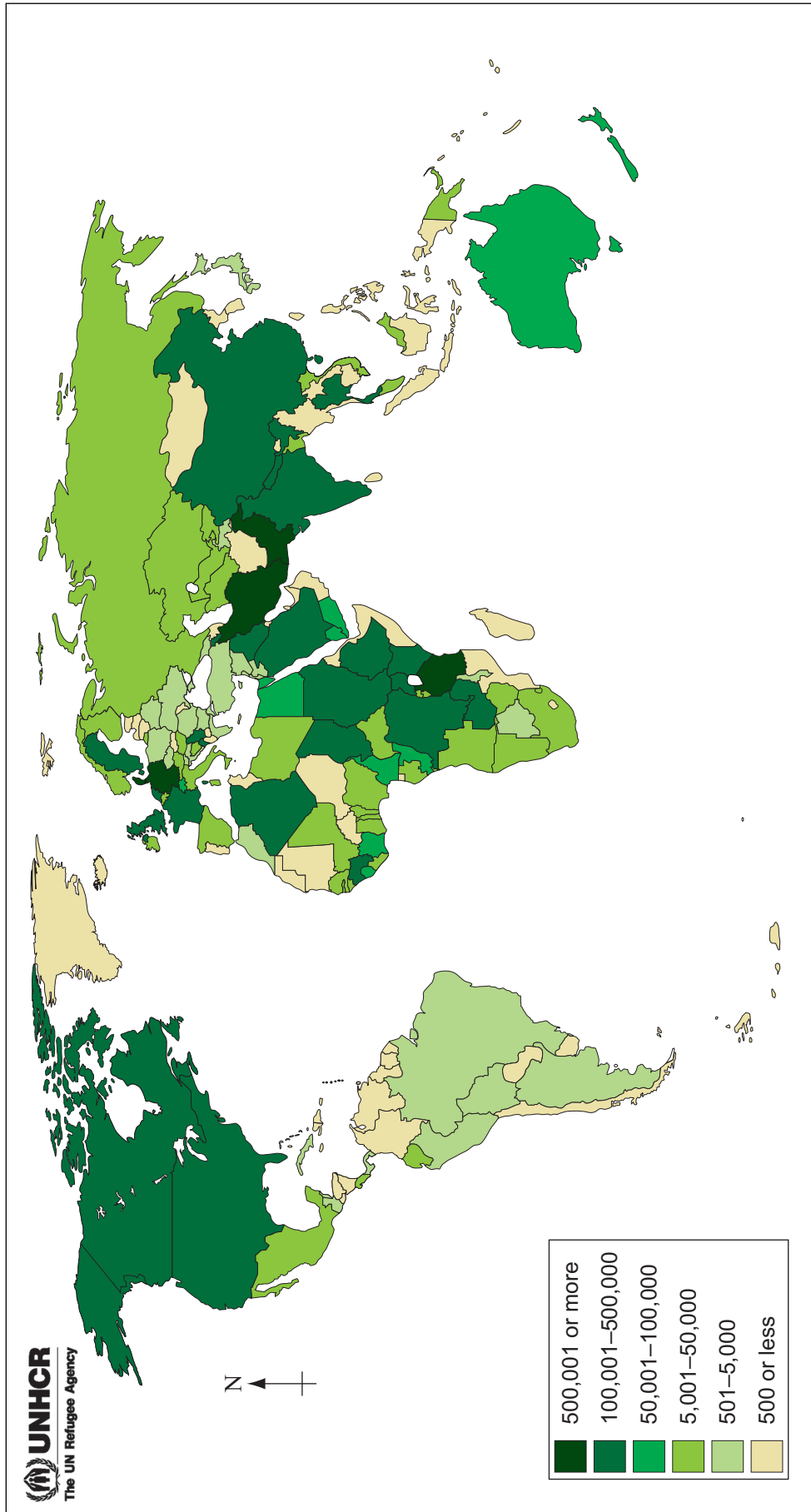


Figure 9b
Refugee population by country of asylum at the end of 2003



Turn over ►



Population of concern to UNHCR by country or territory of asylum or residence), end-2003

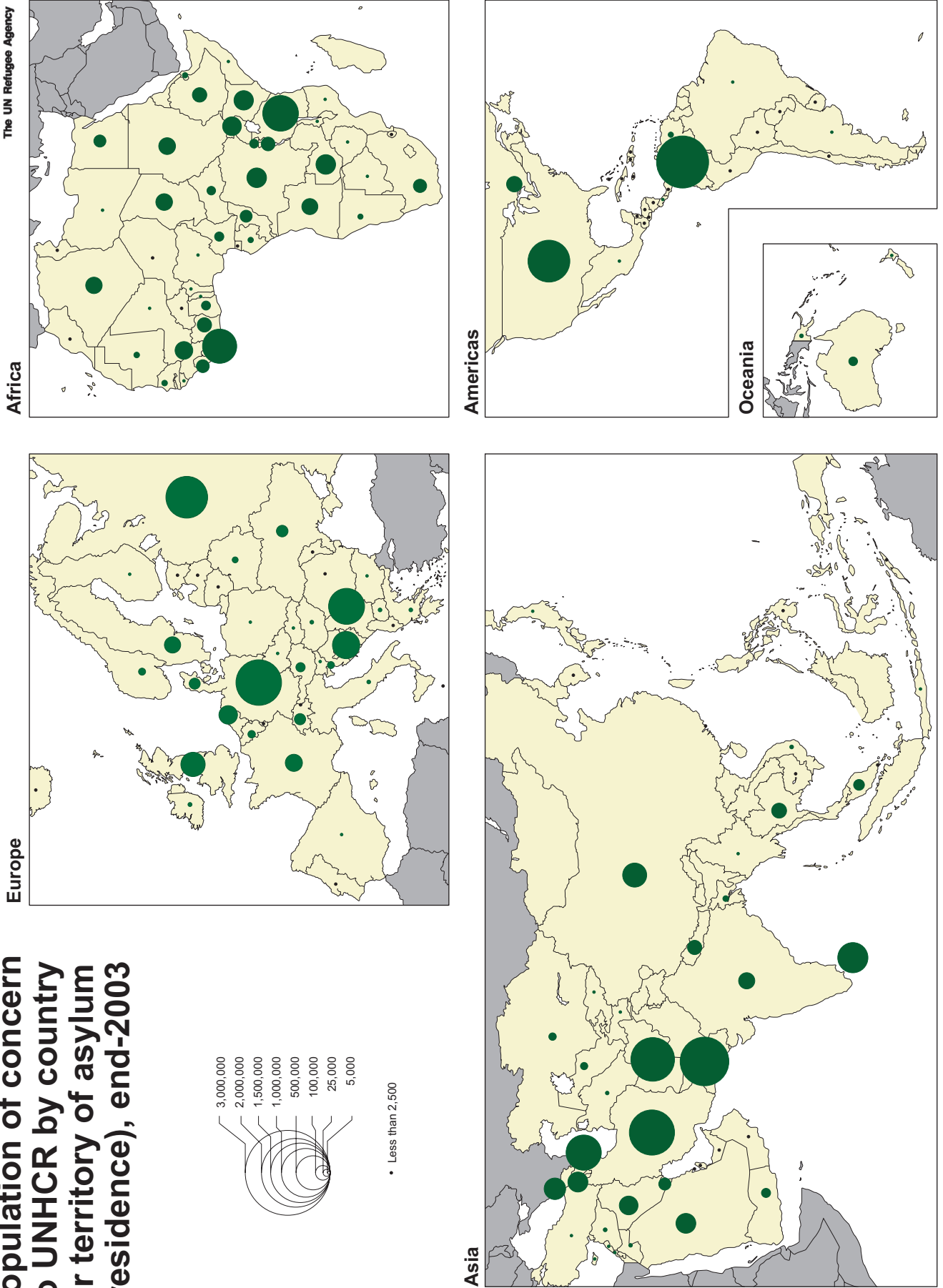
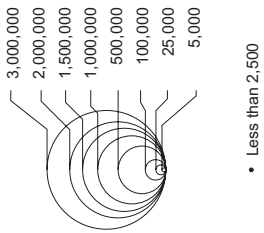


Figure 10

Turn over for Figure 11

Turn over ►

Figure 11

Newspaper articles relating to aspects of economic migration.

"They Come, We Go" by Richard Woods, David Smith and Robert Winnett, The Sunday Times, November 16, 2003 - not reproduced here due to third-party copyright constraints.

"Migrants to face 'work here, paid at home' scheme" by Richard Ford, The Times, July 20 2005 - not reproduced here due to third-party copyright constraints.

"Migrants at the mercy of gangs and tides" by Dominic Kennedy, Andrew Norfolk and Oliver August, The Times, February 7 2004 - not reproduced here due to third-party copyright constraints.

Figure 11 (continued)

There is no text printed on this page

ACKNOWLEDGEMENT OF COPYRIGHT-HOLDERS AND PUBLISHERS

Permission to reproduce all copyright material has been applied for. In some cases, efforts to contact copyright-holders have been unsuccessful and AQA will be happy to rectify any omissions of acknowledgements in future papers if notified.

- Figure 2: Courtesy of NOAA's National Weather Scheme
Figure 4a–4d: www.nhc.noaa.gov
Figure 6: adapted from JULIAN BORGER & DUNCAN CAMPBELL, Guardian Newspapers Limited
‘Traffic at a standstill’ photograph – REUTERS/Rick Wilking
‘Flooded highway’ photograph – REUTERS/Marc Serota
Figure 9a, 9b & 10: UNHCR
Figure 11: “They Come, We Go” – RICHARD WOODS, DAVID SMITH & ROBERT WINNETT, *The Sunday Times*, London
“Migrants at the mercy of gangs and tides” – DOMINIC KENNEDY, ANDREW NORFOLK & OLIVER AUGUST, *The Times*, London
“Migrants to face ‘work here, paid at home’ scheme” – RICHARD FORD, *The Times*, London

Copyright © 2007 AQA and its licensors. All rights reserved.