

Please write clearly in block capitals.

Centre number

--	--	--	--	--

Candidate number

--	--	--	--

Surname

Forename(s)

Candidate signature

AS GEOGRAPHY

Unit 1 Physical and Human Geography

Tuesday 17 May 2016

Afternoon

Time allowed: 2 hours

Materials

For this paper you must have:

- a pencil
- a rubber
- a ruler.

You may use a calculator.

Instructions

- Use black ink or black ball-point pen. Use pencil only for drawing.
- Fill in the boxes at the top of the page.
- You must answer the questions in the spaces provided. Do not write outside the box around each page or on blank pages.
- Answer Question 1 and **one other question** from **Section A** and Question 5 and **one other question** from **Section B**.
- Do all rough work in this book. Cross through any work you do not want to be marked.

Information

- The marks for questions are shown in brackets.
- The maximum mark for this paper is 120.
- Each question is worth 30 marks.
- You are expected to use a calculator where appropriate.
- You will be marked on your ability to:
 - use good English
 - organise information clearly
 - use specialist vocabulary where appropriate.

Advice

- Where appropriate, sketch maps and diagrams should be used to illustrate answers and reference made to examples and case studies.
- You are advised to spend about 60 minutes on **Section A** and about 60 minutes on **Section B**.



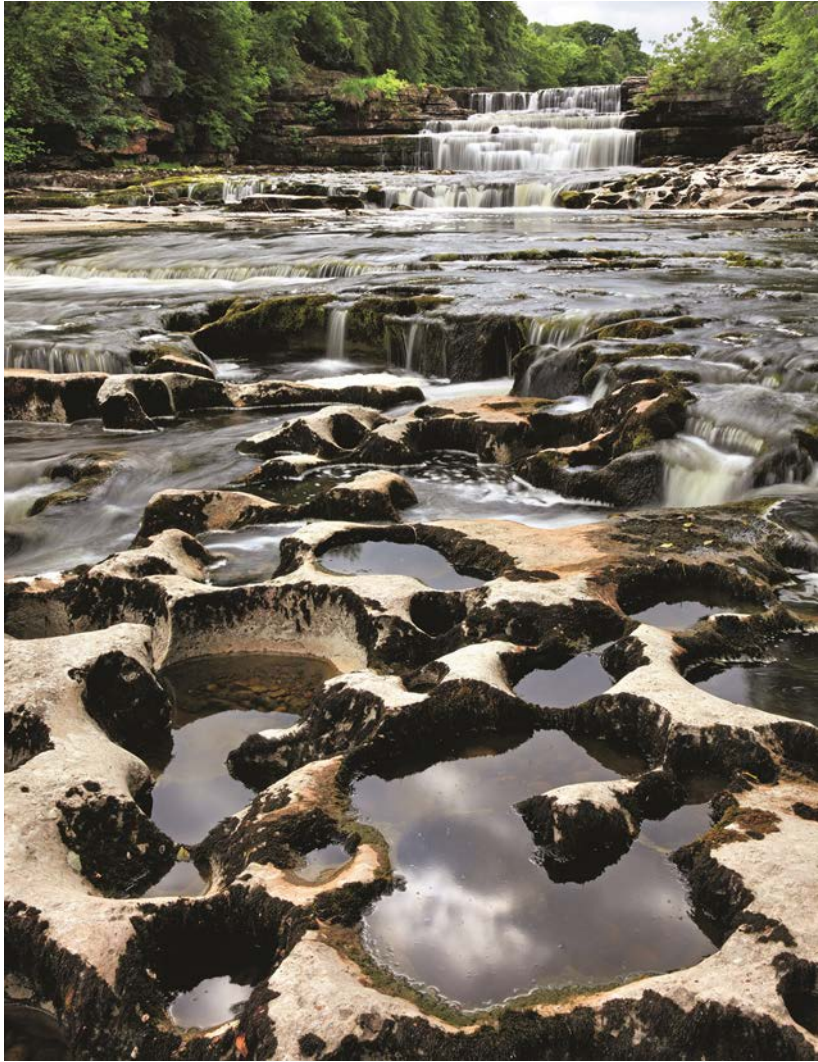
Section A

Answer **Question 1** and **one other question** from this section.

1 Rivers, Floods and Management

1 (a) **Figure 1** is a photograph of part of the River Ure in North Yorkshire.

Figure 1



1 (a) (i) Describe landforms resulting from fluvial erosion shown in **Figure 1**.

[4 marks]



Extra space _____

1 (a) (ii) Explain the formation of a waterfall.

[4 marks]

Extra space _____

Question 1 continues on the next page

Turn over ►



Extra space _____

30



2 Cold Environments

2 (a) Figure 2 is a photograph showing the area around a glacier in the Canadian Rockies.

Figure 2



2 (a) (i) Outline evidence that suggests frost shattering is an active process in the area shown in Figure 2.

[3 marks]

Question 2 continues on the next page

Turn over ►



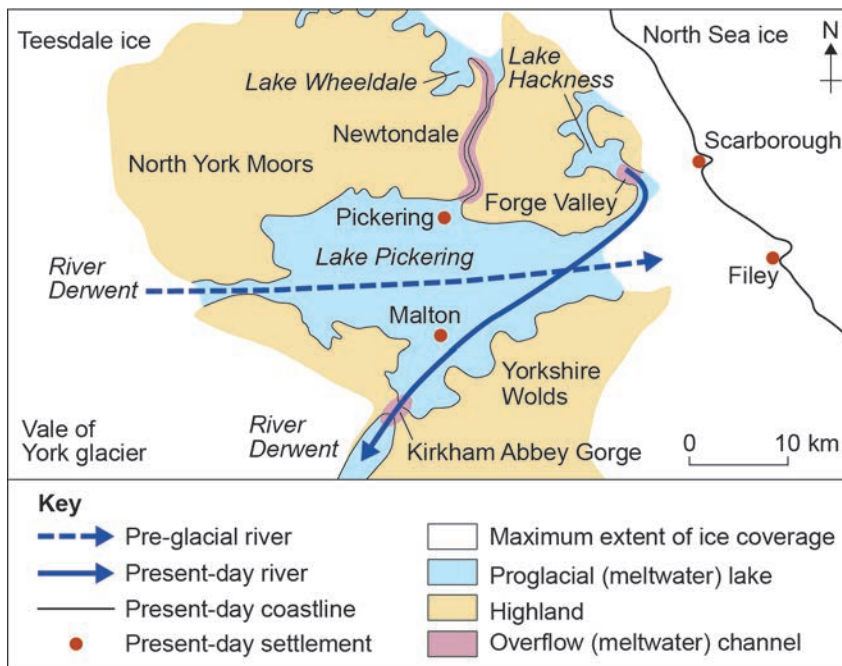
2 (a) (ii) Describe how frost shattering influences the development of glacial landforms.

[4 marks]

Extra space

2 (b) Figure 3 shows the influence of glaciation on drainage in North Yorkshire.

Figure 3



2 (b) (i) Summarise the changes in drainage (surface water) before, during and after glaciation shown in **Figure 3**.

[3 marks]

2 (b) (ii) Describe a meltwater channel and explain its formation.

[5 marks]

Question 2 continues on the next page

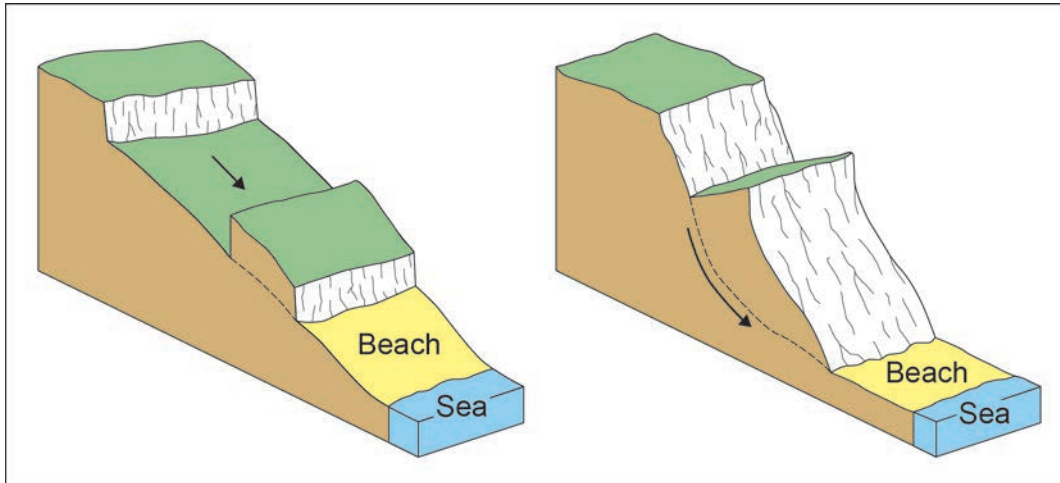
Turn over ►



3 Coastal Environments

3 (a) Figure 4 is a diagram showing two different types of mass movement on a coastline.

Figure 4



3 (a) (i) With the help of **Figure 4**, suggest how mass movement can occur along a coastline. **[3 marks]**



3 (a) (ii) Describe how mass movement can change coastal landforms.

[4 marks]

Extra space _____

Question 3 continues on the next page

Turn over ►



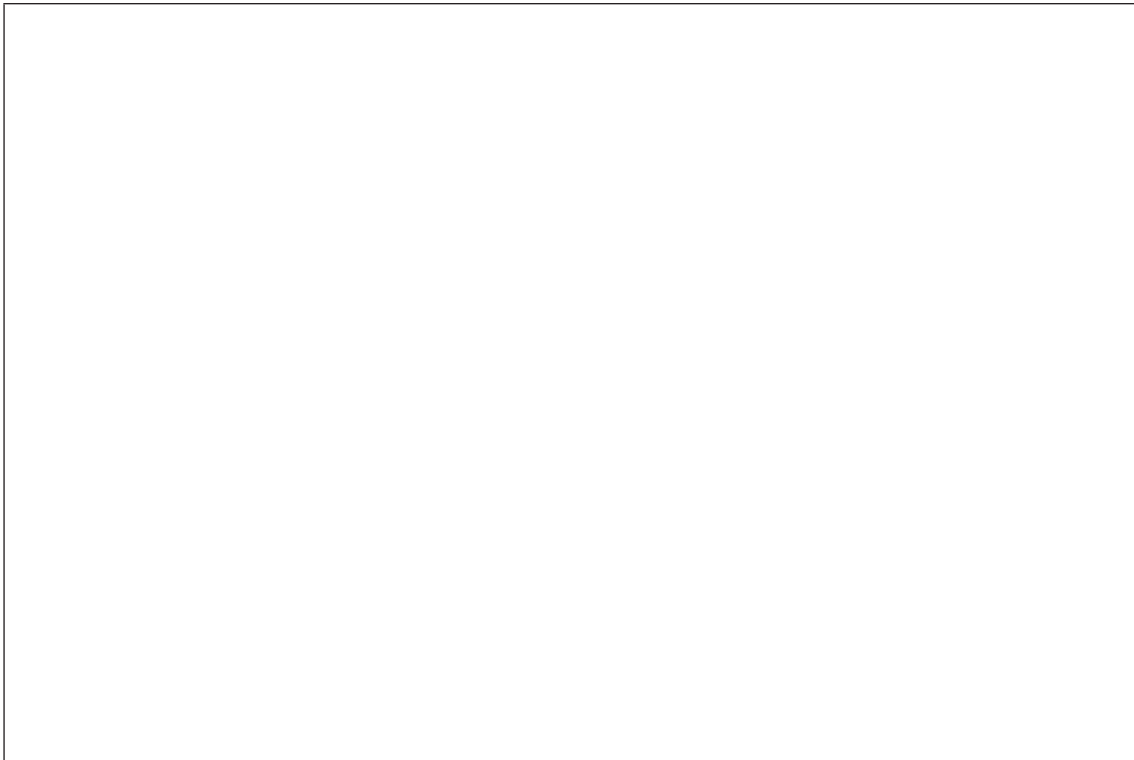
- 3 (b) Figure 5 is a photograph of a sea stack at Flamborough Head, East Yorkshire.

Figure 5



- 3 (b) (i) Draw an annotated sketch to describe this sea stack.

[3 marks]



Extra space _____

30

Turn over for the next question

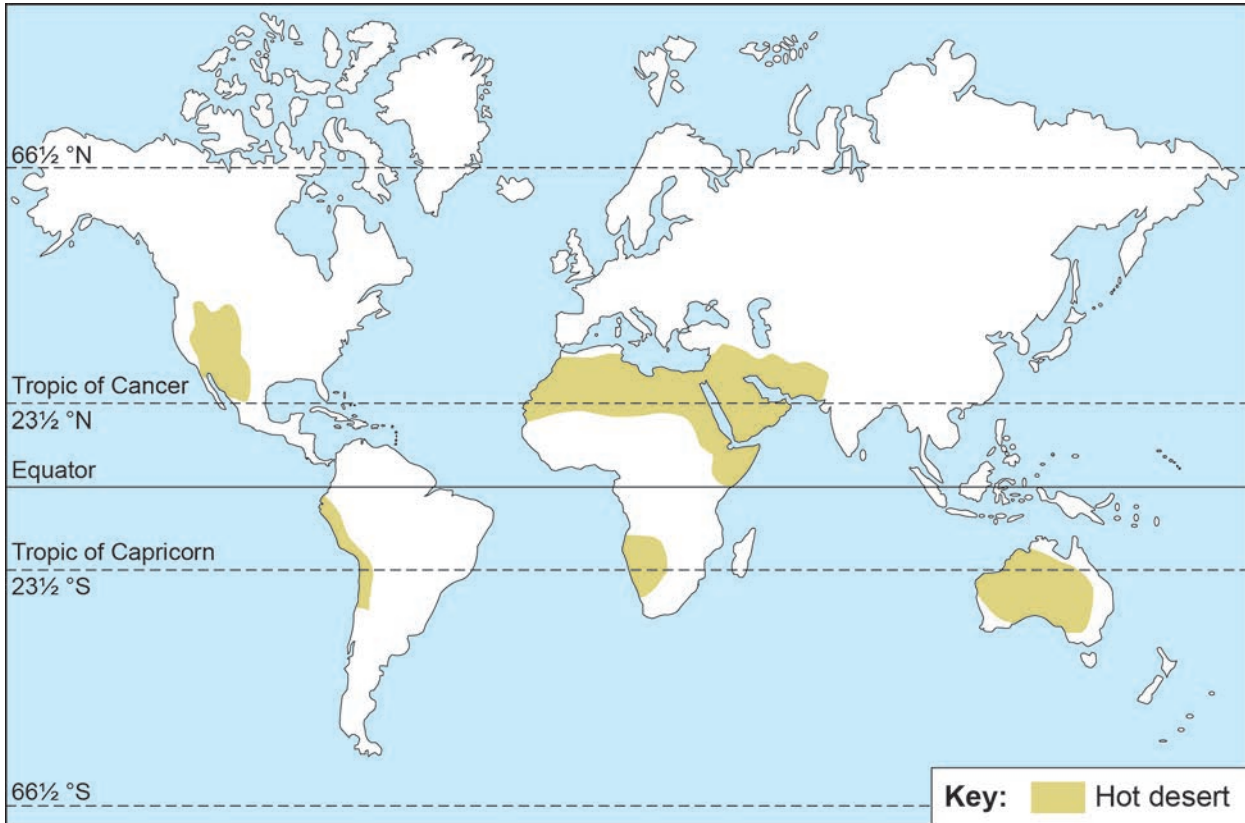
Turn over ▶



4 Hot Desert Environments and their Margins

4 (a) Figure 6 shows the location of hot deserts.

Figure 6



Summarise the distribution of hot deserts shown in **Figure 6**.

[3 marks]



4 (b) Describe how climate affects soils in hot deserts.

[4 marks]

Extra space _____

4 (c) (i) Outline how wind transports material in hot deserts.

[3 marks]

Question 4 continues on the next page

Turn over ►



4 (c) (ii) **Figure 7** is a photograph of a landform influenced by wind erosion.

Figure 7



With the help of **Figure 7**, explain how wind erosion influences the development of hot desert landforms.

[5 marks]



Turn over for Section B

**DO NOT WRITE ON THIS PAGE
ANSWER IN THE SPACES PROVIDED**

Turn over ►



Section B

Answer **Question 5** and **one other question** from this section.

5 Population Change

- 5 (a)** **Figure 8** is a table of six countries at different stages of development, ranked according to wealth and showing information on two population indicators.

Figure 8

Rank according to wealth 2013	Country	Life expectancy		Population density per sq km 2013
		1970	2013	
1	USA	71	79	33
2	UK	72	81	266
3	Brazil	59	75	24
4	Bolivia	46	67	9
5	India	49	66	394
6	Bangladesh	48	70	1101

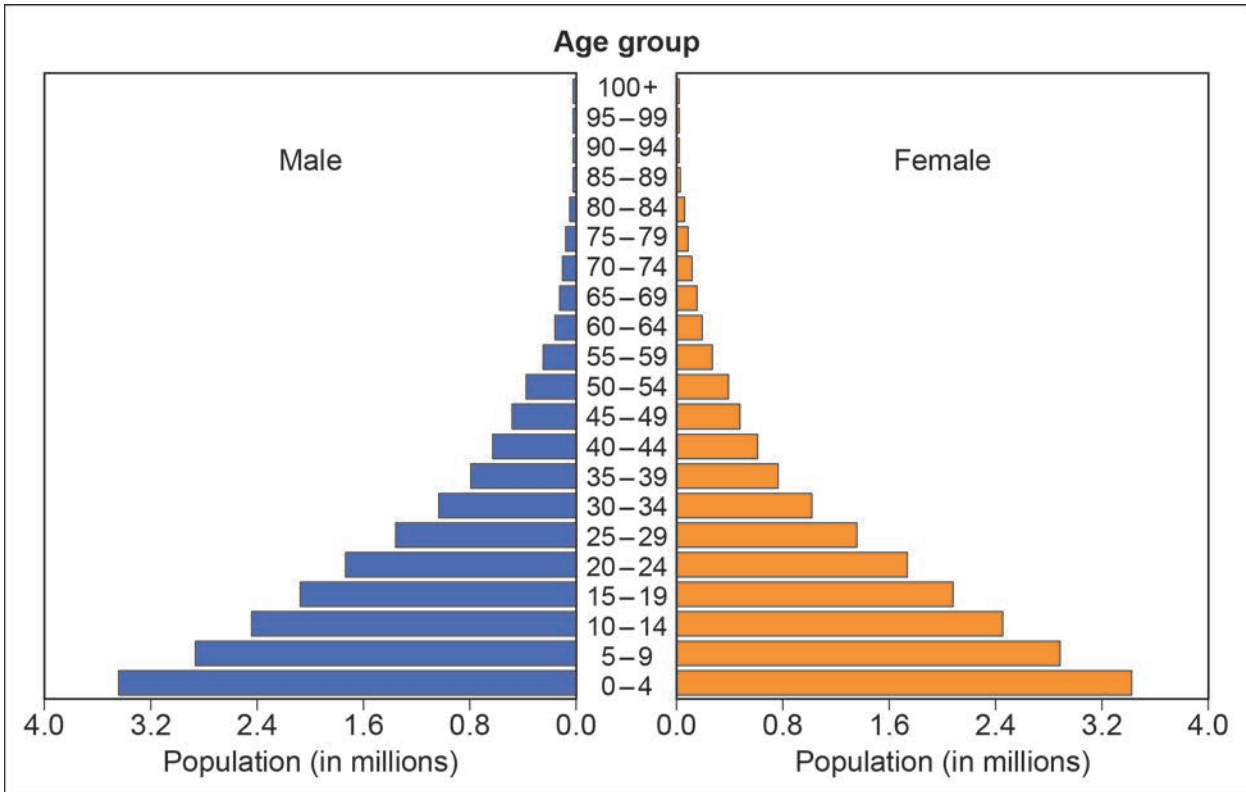
- 5 (a) (i)** Outline the changes in life expectancy between 1970 and 2013 for the countries shown in **Figure 8**.

[3 marks]



5 (b) **Figure 9** is a population pyramid showing the population structure of Uganda in 2014.

Figure 9



Describe Uganda’s population structure in **Figure 9** and explain how this structure is likely to change if the country progresses through the demographic transition.

[7 marks]



Turn over for the next question

**DO NOT WRITE ON THIS PAGE
ANSWER IN THE SPACES PROVIDED**

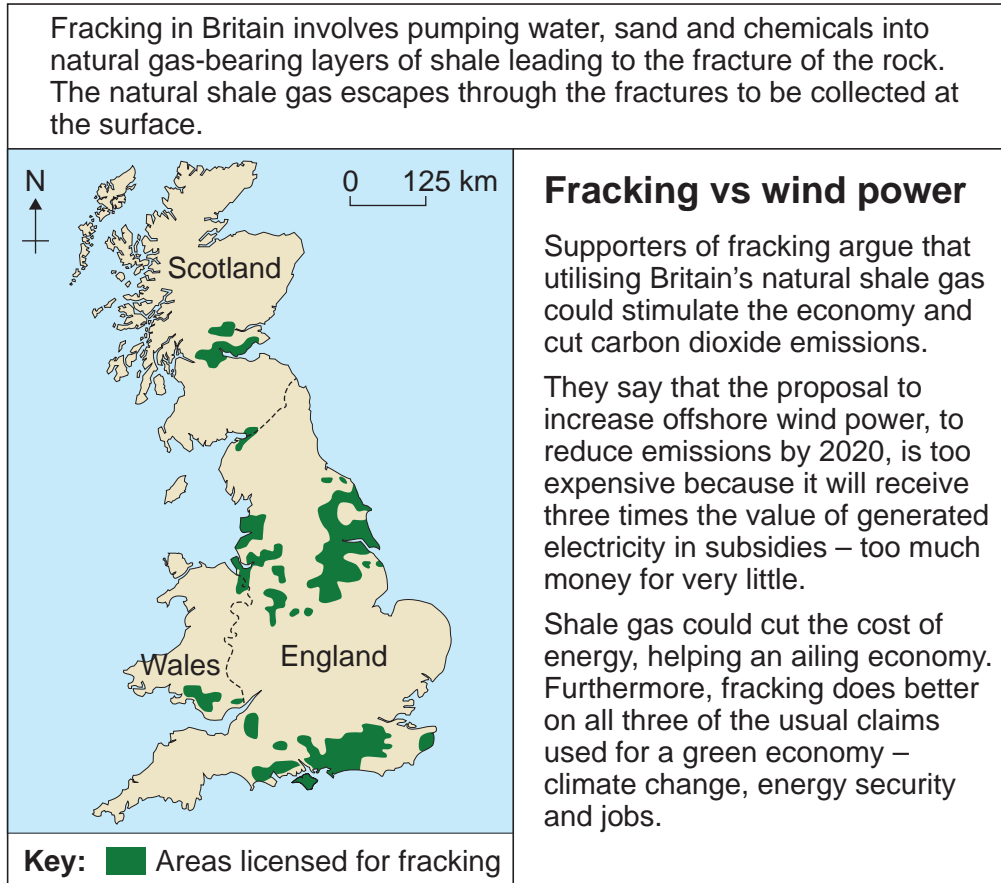
Turn over ►



7 Energy Issues

7 (a) Figure 11 is an extract from a geographical publication about fracking in 2014.

Figure 11



7 (a) (i) Describe the distribution of areas licensed for fracking shown in Figure 11.

[4 marks]



Extra space _____

7 (a) (ii) With the help of **Figure 11**, comment on the possible benefits of fracking in providing a clean, economic and reliable supply of energy.

[5 marks]

Extra space _____

Question 7 continues on the next page

Turn over ►



7 (b) Explain the impact of fuelwood gathering on the environment.

[6 marks]

Extra space _____

Extra space _____

30



Turn over for the next question

**DO NOT WRITE ON THIS PAGE
ANSWER IN THE SPACES PROVIDED**

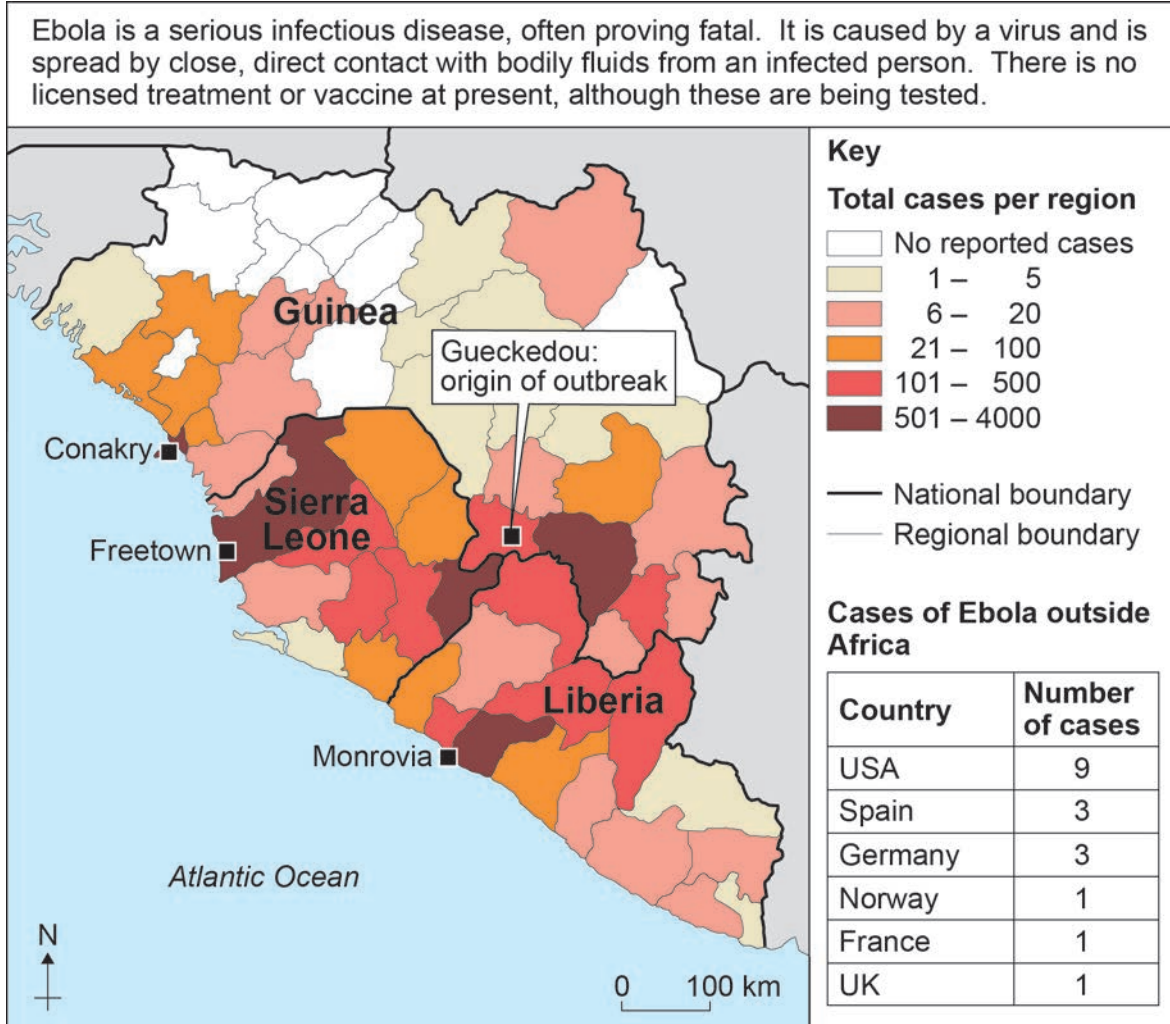
Turn over ►



8 Health Issues

8 (a) Figure 12 shows the distribution of Ebola cases in part of West Africa and cases outside Africa up to November 2014.

Figure 12



8 (a) (i) Describe the distribution of Ebola cases shown on the map in **Figure 12**.

[4 marks]



Extra space _____

30

END OF QUESTIONS

Copyright information

For confidentiality purposes, from the November 2015 examination series, acknowledgements of third party copyright material will be published in a separate booklet rather than including them on the examination paper or support materials. This booklet is published after each examination series and is available for free download from www.aqa.org.uk after the live examination series.

Permission to reproduce all copyright material has been applied for. In some cases, efforts to contact copyright-holders may have been unsuccessful and AQA will be happy to rectify any omissions of acknowledgements. If you have any queries please contact the Copyright Team, AQA, Stag Hill House, Guildford, GU2 7XJ.

Copyright © 2016 AQA and its licensors. All rights reserved.

