



Oxford Cambridge and RSA

Thursday 21 October 2021 – Afternoon

AS Level Further Mathematics B (MEI)

Y414/01 Numerical Methods

Printed Answer Booklet

Time allowed: 1 hour 15 minutes



You must have:

- Question Paper Y414/01 (inside this document)
- the Formulae Booklet for Further Mathematics B (MEI)
- a scientific or graphical calculator



Please write clearly in black ink. **Do not write in the barcodes.**

Centre number

--	--	--	--	--

Candidate number

--	--	--	--

First name(s)

Last name

INSTRUCTIONS

- Use black ink. You can use an HB pencil, but only for graphs and diagrams.
- Write your answer to each question in the space provided in the **Printed Answer Booklet**. If you need extra space use the lined pages at the end of the Printed Answer Booklet. The question numbers must be clearly shown.
- Answer **all** the questions.
- Where appropriate, your answer should be supported with working. Marks might be given for using a correct method, even if your answer is wrong.
- Give your final answers to a degree of accuracy that is appropriate to the context.

INFORMATION

- This document has **12** pages.

ADVICE

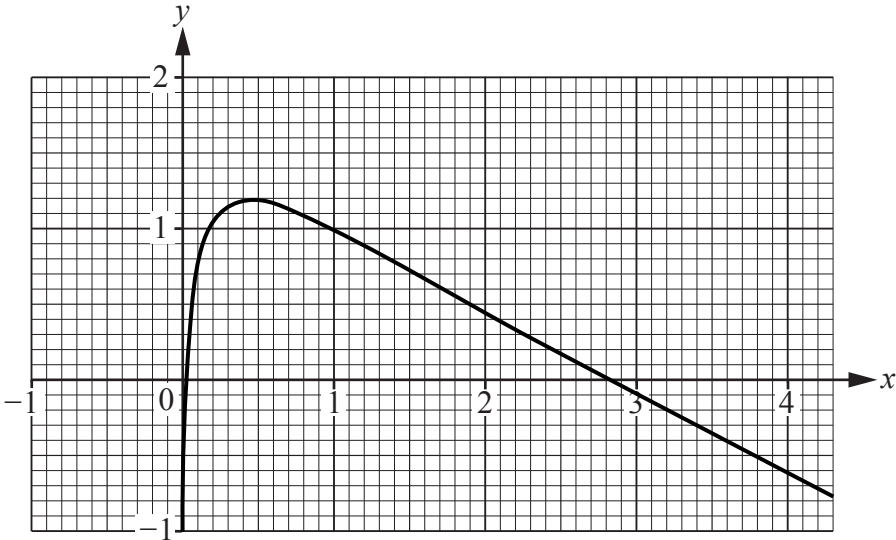
- Read each question carefully before you start your answer.

1(a)	
1(b)	

2(a)	
2(b)	
2(c)	

3(a)	
3(b)	
3(c)	

4(a)



4(b)

A series of 18 horizontal lines for writing or showing work.

4(c)	
4(d)	
4(e)	

4(f)	
4(g)	
5(a)	
D2 =	
E3 =	
F4 =	
C5 =	

6(a)	
6(b)	
6(c)	
6(d)	
6(e)	

6(f)	
6(g)	
7(a)	
7(b)	
7(c)	

7(d)	
7(e)	
7(f)	

