



Oxford Cambridge and RSA

Thursday 22 October 2020 – Afternoon

AS Level Further Mathematics B (MEI)

Y414/01 Numerical Methods

Printed Answer Booklet

Time allowed: 1 hour 15 minutes



You must have:

- Question Paper Y414/01 (inside this document)
- the Formulae Booklet for Further Mathematics B (MEI)
- a scientific or graphical calculator



Please write clearly in black ink. **Do not write in the barcodes.**

Centre number

--	--	--	--	--

Candidate number

--	--	--	--

First name(s)

Last name

INSTRUCTIONS

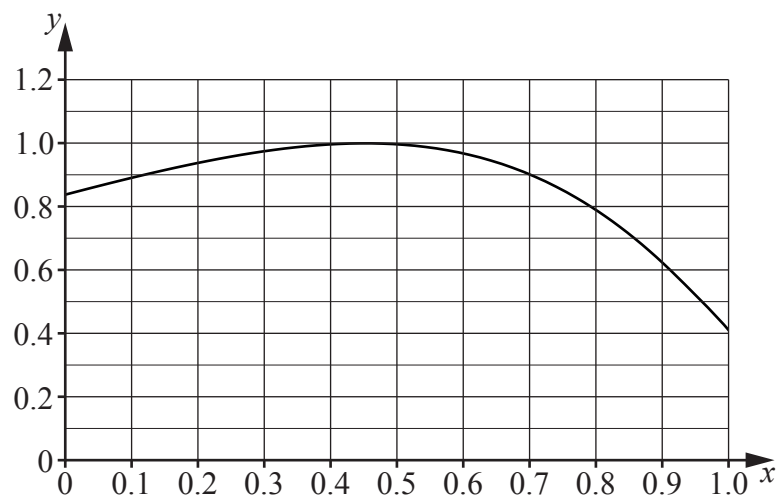
- Use black ink. You can use an HB pencil, but only for graphs and diagrams.
- Write your answer to each question in the space provided in the **Printed Answer Booklet**. You can use extra paper if you need to, but you must clearly show your candidate number, the centre number and the question numbers.
- Answer **all** the questions.
- Where appropriate, your answer should be supported with working. Marks might be given for using a correct method, even if your answer is wrong.
- Give your final answers to a degree of accuracy that is appropriate to the context.

INFORMATION

- This document has **12** pages.

ADVICE

- Read each question carefully before you start your answer.

1(a)**1(b)****1(c)**

1(d)	
1(e)	
1(f)	
2(a)	

2(b)	

2(c)	

3(b)	
4(a)	

4(b)

4(c)

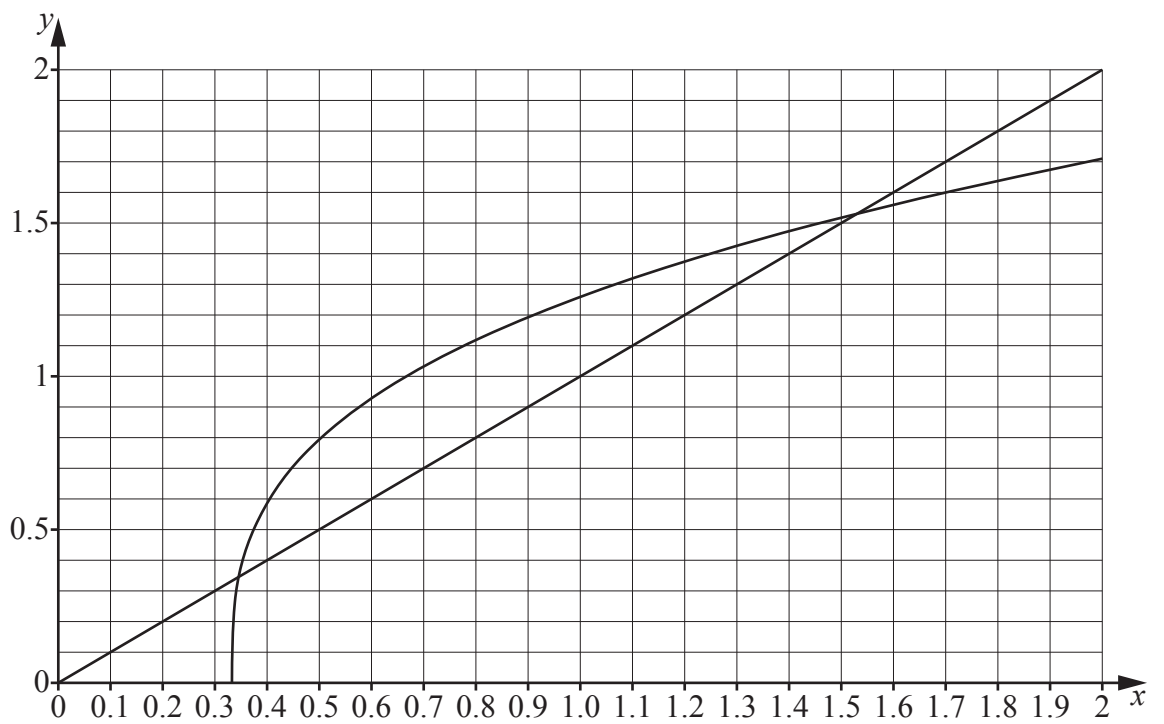
5(a)	
5(b)	
5(c)	
5(d)	

5(e)

6(a)

6(b)

6(c)



6(d)

6(e)	
7(a)	
7(b)	

7(c)	



Copyright Information

OCR is committed to seeking permission to reproduce all third-party content that it uses in its assessment materials. OCR has attempted to identify and contact all copyright holders whose work is used in this paper. To avoid the issue of disclosure of answer-related information to candidates, all copyright acknowledgements are reproduced in the OCR Copyright Acknowledgements Booklet. This is produced for each series of examinations and is freely available to download from our public website (www.ocr.org.uk) after the live examination series.

If OCR has unwittingly failed to correctly acknowledge or clear any third-party content in this assessment material, OCR will be happy to correct its mistake at the earliest possible opportunity.

For queries or further information please contact The OCR Copyright Team, The Triangle Building, Shaftesbury Road, Cambridge CB2 8EA.

OCR is part of the Cambridge Assessment Group; Cambridge Assessment is the brand name of University of Cambridge Local Examinations Syndicate (UCLES), which is itself a department of the University of Cambridge.