



15 March – 15 May 2014

AS GCE FRENCH

F701 Speaking

TEACHER/EXAMINER BOOKLET

To be opened three working days before the first day of the Speaking tests at the Centre.

To be completed between 15 March and 15 May 2014



INSTRUCTIONS TO TEACHERS/EXAMINERS

- Materials must **not** be removed from the Centre.
- Three working days before the first day of the Speaking tests at the Centre, the Examinations Officer should make available the confidential Teacher/Examiner Booklet to the Head of Languages or appropriate specialist teacher.
- Teacher/Examiners must ensure that they have sufficient time to familiarise themselves with the materials and procedures.
- Teacher/Examiners must take great care to ensure that the confidential information in this Booklet does not reach any candidates directly or indirectly.

INFORMATION FOR TEACHERS/EXAMINERS

- There are two sections to this examination.
A Role play (5-6 mins)
B Topic discussion (9-10 mins)
- Candidates may bring into the examination a maximum of one side of A4 notes.
- This document consists of **28** pages. Any blank pages are indicated.

RANDOMISATION SHEET

Candidates must be given the Role Play cards in the following sequence. Centres with more than 24 candidates should repeat the sequence.

Candidate	Card
1	A
2	A
3	D
4	D
5	F
6	F
7	B
8	B
9	C
10	C
11	A
12	A
13	E
14	E
15	D
16	D
17	F
18	F
19	B
20	B
21	C
22	C
23	E
24	E



15 March – 15 May 2014

AS GCE FRENCH

F701 Speaking

ROLE PLAY A

- This Candidate's Sheet is to be handed to the candidate 20 minutes in advance.

INFORMATION FOR CANDIDATES

- You should use the time available to study the instructions overleaf. You may make notes on this sheet, which you should take into the examination room with you.
- When the test begins you will be asked:
 - (i) to carry out the task described overleaf
 - (ii) to discuss with the examiner the sub-topic which you have prepared. The topic must refer to France or a French-speaking country.
- You may **not** use a dictionary.

There are two sections to this examination:

- | | |
|--------------------------------|------------|
| A Role play (5-6 mins) | [30 Marks] |
| B Topic discussion (9-10 mins) | [30 Marks] |

- Candidates may bring into the examination a maximum of one side of A4 notes for the Topic discussion.

ROLE PLAY A – CANDIDATE’S SHEET

Note to the candidate: You should begin by asking the two questions. The task can then be completed in the order you prefer. You should base your replies on the English text, but sometimes you will need to use your imagination and initiative to react to the examiner’s comments and questions.

La Situation

Vous habitez à Shrewsbury. Des Français font un séjour chez vous et vous discutez avec la mère / le père de la famille.

La Tâche

Son mari / sa femme va fêter son anniversaire en juillet et la mère / le père voudrait trouver le cadeau idéal.

D’abord vous devez vous renseigner sur :

- 1 les intérêts de son mari / sa femme**
- 2 la somme d’argent qu’il / elle voudrait dépenser**

Vous pensez que des tickets pour un tournoi de golf, l’Open britannique, lui conviendraient parfaitement. À l’aide d’un dépliant, vous donnerez des détails sur :

- l’histoire du tournoi
- le tournoi de nos jours
- le tournoi de cette année
- les tarifs et les informations pratiques
- les possibilités de restauration
- le site web

Au cours de la conversation vous discuterez aussi :

- de ce que vous pensez du sport
- de ce que vous aimeriez faire pour fêter votre anniversaire



The first championship took place in Scotland in October 1860. Only eight golfers took part. At first, the winner received a belt; later, a prize of £6 was introduced.

Now, the Open attracts the best players from around the world. Top amateurs play alongside the professionals and it is one of golf's most important championships.

The magnificent Royal Liverpool club in the north-west of England will host the 2014 championship from 17–20 July. It will be shown on TV in over 100 countries.

Information

Adults £70

Buy tickets online or by
telephone

Allow plenty of time to travel
as the roads will be busy

Parking is available with
places for disabled guests

Eating

Choice of restaurants offering
a range of prices and menus

Visitors may bring their
own food to consume in
designated areas

The website gives details of special prices for children, where to stay locally
and future tournaments.

ROLE PLAY A – EXAMINER’S SHEET

Note to examiner: Below is a guide to the conduct of your part of the role play exercise. You should start the task as indicated, but the way in which the conversation develops will, of course, vary from candidate to candidate. You should not feel constrained to follow the order shown if this is not appropriate. The items printed in bold, which relate to the completion of the task, must be explored for each candidate. Where there are other suggestions in brackets, these may help to develop the main points.

Situation

As on the candidate’s sheet. You are the mother / father of the French family staying with the candidate.

The Task

You begin the task as follows:

« Moi, je suis la mère / le père d’une famille française qui fait un séjour chez vous. Comme mon mari / ma femme va fêter son anniversaire en juillet, je cherche le cadeau idéal. Alors, je crois que vous avez des questions à me poser. »

In response to the candidate’s questions you answer:

- 1 He / she loves watching and playing golf
- 2 It’s an important birthday, so you are prepared to spend a lot of money

The candidate will suggest buying tickets for the British Open golf championship. During the discussion you comment and ask questions to find out the following information:

- **The origins of the championship**
- **How the championship has changed**
- **Details about this year’s championship**
- **Details about tickets and travel**
(Where can you leave your car?)
- **The options for eating**
- **If there is a website**

During the conversation you will also discuss:

- **The candidate’s opinion of sport**
- **How the candidate would like to celebrate his / her birthday**



15 March – 15 May 2014

AS GCE FRENCH

F701 Speaking

ROLE PLAY B

- This Candidate's Sheet is to be handed to the candidate 20 minutes in advance.

INFORMATION FOR CANDIDATES

- You should use the time available to study the instructions overleaf. You may make notes on this sheet, which you should take into the examination room with you.
- When the test begins you will be asked:
 - (i) to carry out the task described overleaf
 - (ii) to discuss with the examiner the sub-topic which you have prepared. The topic must refer to France or a French-speaking country.
- You may **not** use a dictionary.

There are two sections to this examination:

- | | |
|--------------------------------|------------|
| A Role play (5-6 mins) | [30 Marks] |
| B Topic discussion (9-10 mins) | [30 Marks] |

- Candidates may bring into the examination a maximum of one side of A4 notes for the Topic discussion.

ROLE PLAY B – CANDIDATE’S SHEET

Note to the candidate: You should begin by asking the two questions. The task can then be completed in the order you prefer. You should base your replies on the English text, but sometimes you will need to use your imagination and initiative to react to the examiner’s comments and questions.

La Situation

Un(e) collègue québécois(e) de votre mère est venu(e) dîner à la maison.

La Tâche

Vous discutez avec le / la collègue et vous découvrez qu’il / elle cherche des amis.

D’abord vous devez vous renseigner sur :

1 la raison pour laquelle il / elle cherche des amis

2 les activités qu’il / elle aime

Vous avez un dépliant sur les services d’une agence de rencontre et vous pensez que cela pourrait lui être utile. À l’aide du dépliant, vous donnerez des détails sur :

- l’histoire et l’objectif du club *Goodtimes*
- le fonctionnement du club
- les membres
- le choix de vêtements
- les abonnements
- la façon de rester en contact avec les membres

Au cours de la conversation vous discuterez aussi :

- de ce que vous aimez faire le soir
- de l’importance d’avoir des amis

Feeling lonely? Join the *Goodtimes* friendship club

Goodtimes, set up by a group of friends, is now in its twentieth year. It aims to help singles of all ages to meet people in a safe environment, whether they are looking for new friends or a partner for life.

Every month, *Goodtimes* offers at least two social activities. One is always a restaurant evening, sampling different types of cuisine, and the second is either a disco or a games evening.



Club members come from all walks of life and range in age from 18 to 80. There is no selection process and everybody is welcome.

Members can wear what they like but many choose to dress elegantly.

Membership for both men and women costs only £25 per month and members must enrol for one year. They also need to pay for their meals and for any drinks.

Members receive a fortnightly email with forthcoming events and news.

ROLE PLAY B – EXAMINER’S SHEET

Note to examiner: Below is a guide to the conduct of your part of the role play exercise. You should start the task as indicated, but the way in which the conversation develops will, of course, vary from candidate to candidate. You should not feel constrained to follow the order shown if this is not appropriate. The items printed in bold, which relate to the completion of the task, must be explored for each candidate. Where there are other suggestions in brackets, these may help to develop the main points.

Situation

As on the candidate’s sheet. You are a Quebecois work colleague of the candidate’s mother.

The Task

You begin the task as follows:

« Votre mère m’a invité(e) à dîner chez vous. Moi, je suis un(e) collègue de bureau de votre mère. Alors, Monsieur / Mademoiselle, je crois que vous avez des questions à me poser. »

In response to the candidate’s questions you answer:

- 1 You’ve just arrived in England and you hardly know anyone
- 2 You like dancing and going out to restaurants

The candidate will explain about the services offered by a friendship club, *Goodtimes*. During the discussion you comment and ask questions to find out the following information:

- **The history and aim of the club**
- **How the club works**
- **What the members are like**
(Is it difficult to join?)
- **What you have to wear**
- **How much it costs**
- **How the club keeps in touch**
(Why?)

During the conversation you will also discuss:

- **What the candidate enjoys doing in the evening**
- **The importance of having friends**



15 March – 15 May 2014

AS GCE FRENCH

F701 Speaking

ROLE PLAY C

- This Candidate's Sheet is to be handed to the candidate 20 minutes in advance.

INFORMATION FOR CANDIDATES

- You should use the time available to study the instructions overleaf. You may make notes on this sheet, which you should take into the examination room with you.
- When the test begins you will be asked:
 - (i) to carry out the task described overleaf
 - (ii) to discuss with the examiner the sub-topic which you have prepared. The topic must refer to France or a French-speaking country.
- You may **not** use a dictionary.

There are two sections to this examination:

- A Role play (5-6 mins) [30 Marks]
- B Topic discussion (9-10 mins) [30 Marks]

- Candidates may bring into the examination a maximum of one side of A4 notes for the Topic discussion.

ROLE PLAY C – CANDIDATE’S SHEET

Note to the candidate: You should begin by asking the two questions. The task can then be completed in the order you prefer. You should base your replies on the English text, but sometimes you will need to use your imagination and initiative to react to the examiner’s comments and questions.

La Situation

Vous êtes en vacances chez des Français.

La Tâche

Le fils aîné va bientôt passer un an à Birmingham. Il aura besoin d’acheter des meubles en Angleterre. Vous en discutez avec le père / la mère.

D’abord vous devez vous renseigner sur :

- 1 la raison pour laquelle son fils va en Angleterre**
- 2 son logement en Angleterre**

Vous avez trouvé un dépliant sur un magasin de meubles. À l’aide du dépliant, vous donnerez des détails sur :

- le magasin Dandecott’s
- son stock
- la livraison
- sa situation
- les heures d’ouverture
- le site web

Au cours de la conversation vous discuterez aussi :

- des risques d’acheter en ligne
- de si vous voudriez travailler à l’étranger

Dandecott's Furniture Warehouse

Dandecott's is Birmingham's newest and most exciting furniture store, offering second-hand furniture at bargain prices. It is ideal for students and young families who have a limited budget.

All items are carefully selected by an experienced team who carry out any little repairs necessary before items go on sale. Stock changes on a daily basis, so there is always something new. Whatever you want – top quality furniture or unusual colours – you will find it here.



Delivery is free of charge during the week, or available on a Saturday for a payment of £20. Delivery must be booked at the time of purchase.

Dandecott's is easy to find, just off the M6 near Aston Villa football stadium, and has customer parking for 85 cars.

Opening hours:
Monday to Saturday 09.30–20.00
Closed Sundays and bank holidays

Visit website to view items in store and details of how to buy online.

ROLE PLAY C – EXAMINER’S SHEET

Note to examiner: Below is a guide to the conduct of your part of the role play exercise. You should start the task as indicated, but the way in which the conversation develops will, of course, vary from candidate to candidate. You should not feel constrained to follow the order shown if this is not appropriate. The items printed in bold, which relate to the completion of the task, must be explored for each candidate. Where there are other suggestions in brackets, these may help to develop the main points.

Situation

As on the candidate’s sheet. You are the mother / father of the French family with whom the candidate is staying.

The Task

You begin the task as follows:

« Moi, je suis la mère / le père d’une famille chez qui vous êtes en vacances. Comme mon fils va bientôt passer un an en Angleterre, il aura besoin d’acheter quelques meubles pour son appartement. Alors, je crois que vous avez des questions à me poser. »

In response to the candidate’s questions you answer:

- 1 He studies English at university and is spending a year as an assistant in a school
- 2 He’s been offered a cheap flat, but it has no furniture

The candidate will suggest a visit to Dandecott’s. During the discussion you comment and ask questions to find out the following information:

- **What Dandecott’s is**
(For whom is it suitable?)
- **Details about the stock**
- **If delivery is available**
- **Where Dandecott’s is situated**
(Can you go by car?)
- **What the opening hours are**
- **What the website offers**

During the conversation you will also discuss:

- **The risks of internet shopping**
- **If the candidate would like to work abroad**



15 March – 15 May 2014

AS GCE FRENCH

F701 Speaking

ROLE PLAY D

- This Candidate's Sheet is to be handed to the candidate 20 minutes in advance.

INFORMATION FOR CANDIDATES

- You should use the time available to study the instructions overleaf. You may make notes on this sheet, which you should take into the examination room with you.
- When the test begins you will be asked:
 - (i) to carry out the task described overleaf
 - (ii) to discuss with the examiner the sub-topic which you have prepared. The topic must refer to France or a French-speaking country.
- You may **not** use a dictionary.

There are two sections to this examination:

- A Role play (5-6 mins) [30 Marks]
- B Topic discussion (9-10 mins) [30 Marks]

- Candidates may bring into the examination a maximum of one side of A4 notes for the Topic discussion.

ROLE PLAY D – CANDIDATE’S SHEET

Note to the candidate: You should begin by asking the two questions. The task can then be completed in the order you prefer. You should base your replies on the English text, but sometimes you will need to use your imagination and initiative to react to the examiner’s comments and questions.

La Situation

Un(e) ami(e) français(e) de votre père passe quelques jours chez vous. Il / Elle travaille à Cheltenham depuis quatre mois.

La Tâche

Un jour vous discutez avec l’ami(e). Son emploi à Cheltenham étant terminé, il / elle va bientôt rentrer en France et voudrait acheter un cadeau pour son hôte à Cheltenham.

D’abord il faut vous renseigner sur :

1 la raison pour laquelle il / elle travaillait à Cheltenham

2 le type de cadeau qu’il / elle cherche

Vous pensez qu’une liseuse électronique lui conviendrait parfaitement. À l’aide d’un dépliant, vous donnerez des détails sur :

- les utilisateurs d’un Kindle
- le Kindle et les vacances
- le Kindle Touch
- les livres électroniques
- les accessoires
- le site web

Au cours de la conversation vous discuterez aussi :

- de votre livre préféré
- de ce que vous pensez des nouvelles technologies de communication

Kindle

Do you love reading but have no room for any more books? Then an E-reader is for you! The Kindle is suitable for all generations and, because of its price, it is a pleasure that everyone can have.

Take your entire collection of books with you when you relax on the beach this summer. Even in sunny weather, you will be able to read without difficulty. A Kindle slips into your luggage or your handbag and, weighing just 213g, won't cause you problems at the airport.



Kindle Touch

- Download books in under 60 seconds
- Easy to use – just touch the screen

All your favourite titles are available to buy as e-books, and some classic novels will cost you nothing!

Choose from a range of accessories including lights and screen protectors.

See website for price and delivery details. If you are buying a Kindle as a gift, choose a special card online for your friend.

ROLE PLAY D – EXAMINER’S SHEET

Note to examiner: Below is a guide to the conduct of your part of the role play exercise. You should start the task as indicated, but the way in which the conversation develops will, of course, vary from candidate to candidate. You should not feel constrained to follow the order shown if this is not appropriate. The items printed in bold, which relate to the completion of the task, must be explored for each candidate. Where there are other suggestions in brackets, these may help to develop the main points.

Situation

As on the candidate’s sheet. You are a friend of the candidate’s father.

The Task

You begin the task as follows:

« Je suis l’ami(e) de votre père et je passe quelques jours chez vous. Je travaille à Cheltenham depuis quatre mois et je voudrais savoir quel cadeau acheter pour mon hôte avant de rentrer en France. Alors, Monsieur / Mademoiselle, je crois que vous avez des questions à me poser. »

In response to the candidate’s questions you answer:

- 1 Your company sent you there to gain some experience of the British market
- 2 He loves reading, but just one book doesn’t seem enough

The candidate will suggest buying a Kindle. During the discussion you comment and ask questions to find out the following information:

- **Who a Kindle is for**
- **If you can take it on holiday**
- **The advantages of the Kindle Touch**
- **Details about e-books**
- **What accessories there are**
- **If there is a website**
(Are there any further details?)

During the conversation you will also discuss:

- **The candidate’s favourite book**
- **The candidate’s opinion of new communication technology**



15 March – 15 May 2014

AS GCE FRENCH

F701 Speaking

ROLE PLAY E



- This Candidate's Sheet is to be handed to the candidate 20 minutes in advance.

INFORMATION FOR CANDIDATES

- You should use the time available to study the instructions overleaf. You may make notes on this sheet, which you should take into the examination room with you.
- When the test begins you will be asked:
 - (i) to carry out the task described overleaf
 - (ii) to discuss with the examiner the sub-topic which you have prepared. The topic must refer to France or a French-speaking country.
- You may **not** use a dictionary.

There are two sections to this examination:

- | | |
|--------------------------------|------------|
| A Role play (5-6 mins) | [30 Marks] |
| B Topic discussion (9-10 mins) | [30 Marks] |

- Candidates may bring into the examination a maximum of one side of A4 notes for the Topic discussion.

ROLE PLAY E – CANDIDATE’S SHEET

Note to the candidate: You should begin by asking the two questions. The task can then be completed in the order you prefer. You should base your replies on the English text, but sometimes you will need to use your imagination and initiative to react to the examiner’s comments and questions.

La Situation

Vous êtes en vacances chez des Français.

La Tâche

Vous discutez avec le père / la mère de la famille, et vous découvrez que sa fille voudrait faire un stage en Angleterre.

D’abord vous devez vous renseigner sur :

1 l’expérience professionnelle de sa fille

2 le commencement de son stage

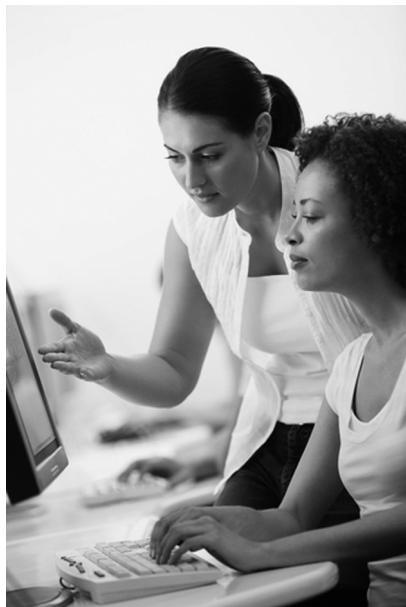
Vous avez un dépliant sur une agence qui aide les étrangers à trouver un stage, et vous pensez que cela pourrait l’intéresser. À l’aide du dépliant, vous donnerez des détails sur :

- l’histoire et l’objectif de l’agence
- les stages disponibles
- les informations personnelles nécessaires
- les services proposés
- le site web
- les conditions

Au cours de la conversation vous discuterez aussi :

- de ce que vous voudriez faire dans la vie et pourquoi
- du pays étranger où vous voudriez faire un stage et pourquoi

Work in England



The Bellaron Agency was founded in 1990 by Bella and Ron, who have worked all around the world. Its aim is to find work experience for young people under the age of 26 who want to spend time in England and improve their English.

Whether you want to work for two weeks or four months, in a hospital or an office, Bellaron will organise a placement for you.

Applicants need to supply details of their previous experience, any qualifications which they hold and the sort of role they are looking for, so that Bellaron staff can consult their database of more than 10,000 employers.

Staff can help you obtain passports and visas, and give advice on the cheapest way of travelling, including discounts with some major airlines.

See the interactive website for job opportunities, the cost involved and how to apply.

Applicants must be over 18 and provide references.

ROLE PLAY E – EXAMINER’S SHEET

Note to examiner: Below is a guide to the conduct of your part of the role play exercise. You should start the task as indicated, but the way in which the conversation develops will, of course, vary from candidate to candidate. You should not feel constrained to follow the order shown if this is not appropriate. The items printed in bold, which relate to the completion of the task, must be explored for each candidate. Where there are other suggestions in brackets, these may help to develop the main points.

Situation

As on the candidate’s sheet. You are the mother/father of the French family with whom the candidate is staying.

The Task

You begin the task as follows:

« Moi, je suis la mère / le père d’une famille française chez qui vous êtes en vacances. Ma fille voudrait faire un stage en Angleterre pour gagner de l’expérience. Alors, je crois que vous avez des questions à me poser. »

In response to the candidate’s questions you answer:

- 1 She worked in a shop last summer
- 2 She would like to start as soon as possible and can offer up to six weeks

The candidate will suggest an agency. During the discussion you comment and ask questions to find out the following information:

- **The history and aim of the agency**
- **Some examples of placements**
(How long can you work for?)
- **What the applicant needs to do**
(Why?)
- **The services the agency offers**
- **If there is a website**
- **Conditions for applicants**

During the conversation you will also discuss:

- **What the candidate would like to do as a job and why**
- **The country in which the candidate would like to do a work placement and why**



15 March – 15 May 2014

AS GCE FRENCH

F701 Speaking

ROLE PLAY F

- This Candidate's Sheet is to be handed to the candidate 20 minutes in advance.

INFORMATION FOR CANDIDATES

- You should use the time available to study the instructions overleaf. You may make notes on this sheet, which you should take into the examination room with you.
- When the test begins you will be asked:
 - (i) to carry out the task described overleaf
 - (ii) to discuss with the examiner the sub-topic which you have prepared. The topic must refer to France or a French-speaking country.
- You may **not** use a dictionary.

There are two sections to this examination:

- A Role play (5-6 mins) [30 Marks]
- B Topic discussion (9-10 mins) [30 Marks]

- Candidates may bring into the examination a maximum of one side of A4 notes for the Topic discussion.

ROLE PLAY F – CANDIDATE’S SHEET

Note to the candidate: You should begin by asking the two questions. The task can then be completed in the order you prefer. You should base your replies on the English text, but sometimes you will need to use your imagination and initiative to react to the examiner’s comments and questions.

La Situation

Vous travaillez pour une agence de voyages qui organise des visites en Angleterre pour les Français.

La Tâche

Un jour vous discutez avec l’organisateur / l’organisatrice d’un groupe de Français. Ils vont visiter la région de Durham et ils voudraient faire des excursions pendant leur séjour. Il / elle est venu(e) en Angleterre pour discuter du programme.

D’abord il faut vous renseigner sur :

1 le nombre de visiteurs dans son groupe

2 les intérêts du groupe

Vous pensez qu’une visite à la cascade de High Force intéresserait le groupe. À l’aide du dépliant, vous donnerez des détails sur :

- la cascade
- sa situation
- l’accès à la cascade
- la sécurité
- les informations pour les visiteurs handicapés
- la possibilité de faire des achats

Au cours de la conversation vous discuterez aussi :

- d’un site touristique que vous avez particulièrement aimé, et pourquoi
- des moyens d’encourager le tourisme

High Force Waterfall



Although not the highest, High Force waterfall, at 21.5 metres, is one of the most beautiful and spectacular in the country.

It is situated in picturesque countryside, just outside the historic town of Middleton-in-Teesdale, about 20 miles west of a medieval castle. Tourists often choose to visit both to make an exciting day out.

The waterfall is reached by a woodland walk of about 500 metres. There are several benches along the route where you can rest, admire the view or take photos.

Safety

Water can be dangerous

Dogs must be controlled

Children must be supervised
at all times

Disabled Visitors

Parking spaces provided
nearer the site

Visitors advised to bring a
companion to help

Some parts of the visit will
be inaccessible

The gift shop is open from Easter until the end of October and sells a variety of high-quality souvenirs at reasonable prices.

ROLE PLAY F – EXAMINER’S SHEET

Note to examiner: Below is a guide to the conduct of your part of the role play exercise. You should start the task as indicated, but the way in which the conversation develops will, of course, vary from candidate to candidate. You should not feel constrained to follow the order shown if this is not appropriate. The items printed in bold, which relate to the completion of the task, must be explored for each candidate. Where there are other suggestions in brackets, these may help to develop the main points.

Situation

As on the candidate’s sheet. You are the organiser of a group of young French people who will be visiting County Durham. You have come to the UK to discuss the proposed programme of visits.

The Task

You begin the task as follows:

« Vous travaillez pour une agence de voyages qui organise des visites en Angleterre pour les Français. Moi, je suis l’organisateur / l’organisatrice d’un groupe de jeunes Français et je suis venu(e) en Angleterre pour discuter du programme. Alors, Monsieur / Mademoiselle, je crois que vous avez des questions à me poser. »

In response to the candidate’s questions you answer:

- 1 There will be about 40 people of mixed ages, one of whom is in a wheelchair
- 2 They like the outdoors

The candidate will suggest a visit to High Force waterfall. During the discussion you comment and ask questions to find out the following information:

- **Details about the waterfall**
- **Where the waterfall is**
(Is there anything else to do nearby?)
- **How to reach the waterfall**
- **Details about safety**
- **Information for disabled visitors**
- **Shopping opportunities**

During the conversation you will also discuss:

- **A tourist site that the candidate particularly liked, and why**
- **How tourism can be encouraged**

**Copyright Information**

OCR is committed to seeking permission to reproduce all third-party content that it uses in its assessment materials. OCR has attempted to identify and contact all copyright holders whose work is used in this paper. To avoid the issue of disclosure of answer-related information to candidates, all copyright acknowledgements are reproduced in the OCR Copyright Acknowledgements Booklet. This is produced for each series of examinations and is freely available to download from our public website (www.ocr.org.uk) after the live examination series.

If OCR has unwittingly failed to correctly acknowledge or clear any third-party content in this assessment material, OCR will be happy to correct its mistake at the earliest possible opportunity.

For queries or further information please contact the Copyright Team, First Floor, 9 Hills Road, Cambridge CB2 1GE.

OCR is part of the Cambridge Assessment Group; Cambridge Assessment is the brand name of University of Cambridge Local Examinations Syndicate (UCLES), which is itself a department of the University of Cambridge.