



UNIVERSITY OF CAMBRIDGE INTERNATIONAL EXAMINATIONS
 General Certificate of Education
 Advanced Subsidiary Level

CANDIDATE NAME

CENTRE NUMBER

CANDIDATE NUMBER



ENVIRONMENTAL MANAGEMENT

8291/21

Paper 2 Hydrosphere and Biosphere

May/June 2011

1 hour 30 minutes

Additional Materials: Answer Booklet/Paper

READ THESE INSTRUCTIONS FIRST

Write your Centre number, candidate number and name on all the work you hand in.
 Write in dark blue or black pen.
 You may use a soft pencil for any diagrams, graphs, tables or rough working.
 Do not use staples, paper clips, highlighters, glue or correction fluid.
 DO **NOT** WRITE IN ANY BARCODES.

Section A

Answer **all** questions.
 Write your answers in the spaces provided on the question paper.

Section B

Answer **one** question from this section.
 Answer the question on the separate answer paper provided.

At the end of the examination,

1. fasten all separate answer paper securely to the question paper;
2. enter the question number from Section B in the grid opposite.

For Examiner's Use	
Section A	/
1	
2	
Section B	/
Total	

This document consists of **12** printed pages.



Section A

Answer **all** questions in this section.

For
Examiner's
Use

Write your answers in the spaces provided.

- 1 (a) An ecosystem can change, over time, as a result of the action of biotic and abiotic processes: a change known as succession. Fig.1.1 shows stages in a succession from open water towards a woodland climax.

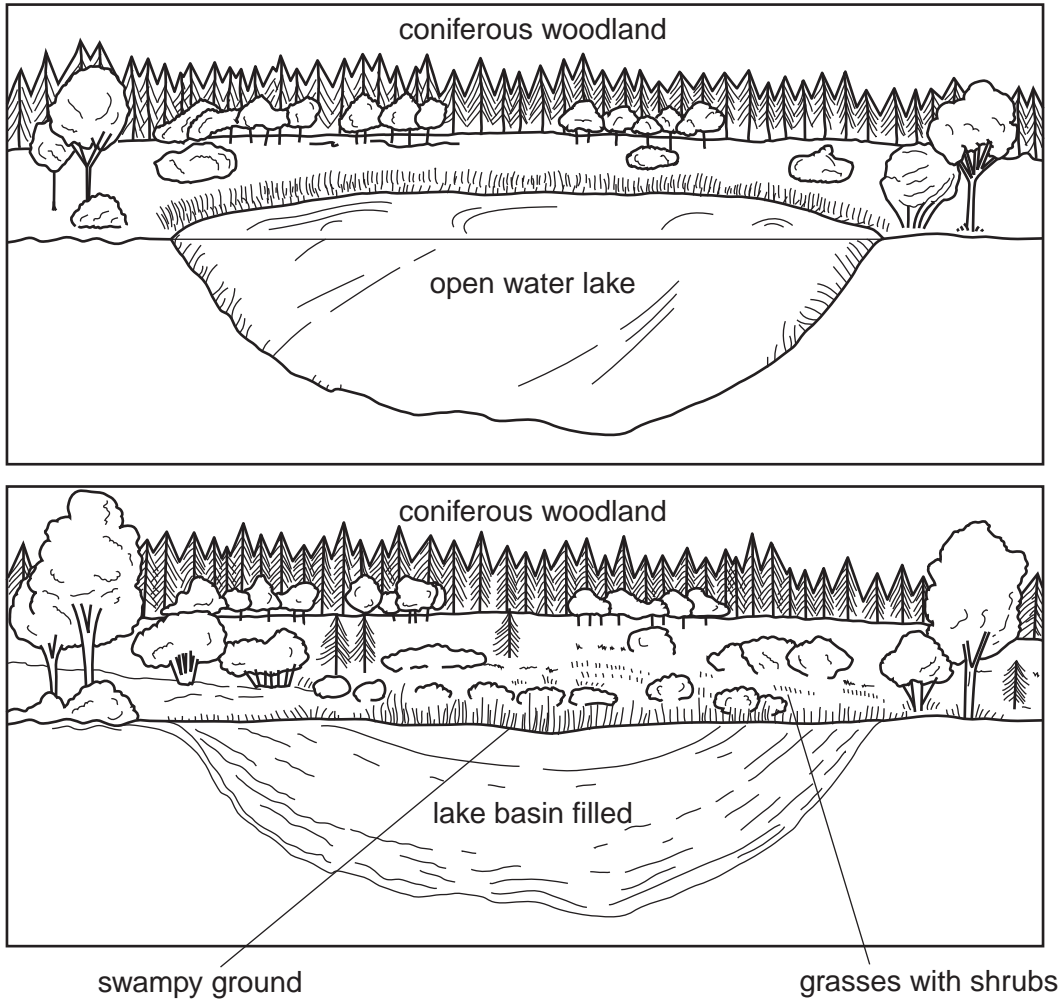


Fig. 1.1

- (i) Giving an example of each term, explain what is meant by *biotic* and *abiotic*.

biotic

.....

.....

abiotic

.....

.....

[4]

(b) Fig. 1.2 contains information on deforestation associated with mining, timber production and agriculture in the tropical rainforest in the state of Rondonia in Brazil.

For
Examiner's
Use

Deforestation in Rondonia (Brazil)

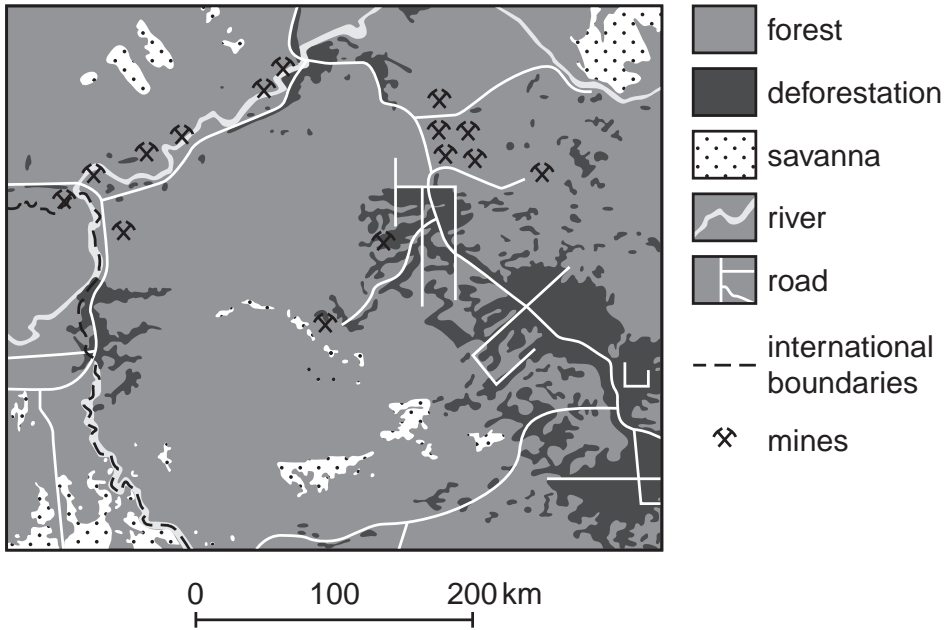


Fig. 1.2

(i) With reference to Fig. 1.2 describe **three** effects that large scale deforestation might have on the ecology of this region of the Amazon Rainforest.

.....

.....

.....

.....

.....

.....

.....

2 (a) Fig. 2.1 is an illustration of the hydrological cycle.

For
Examiner's
Use

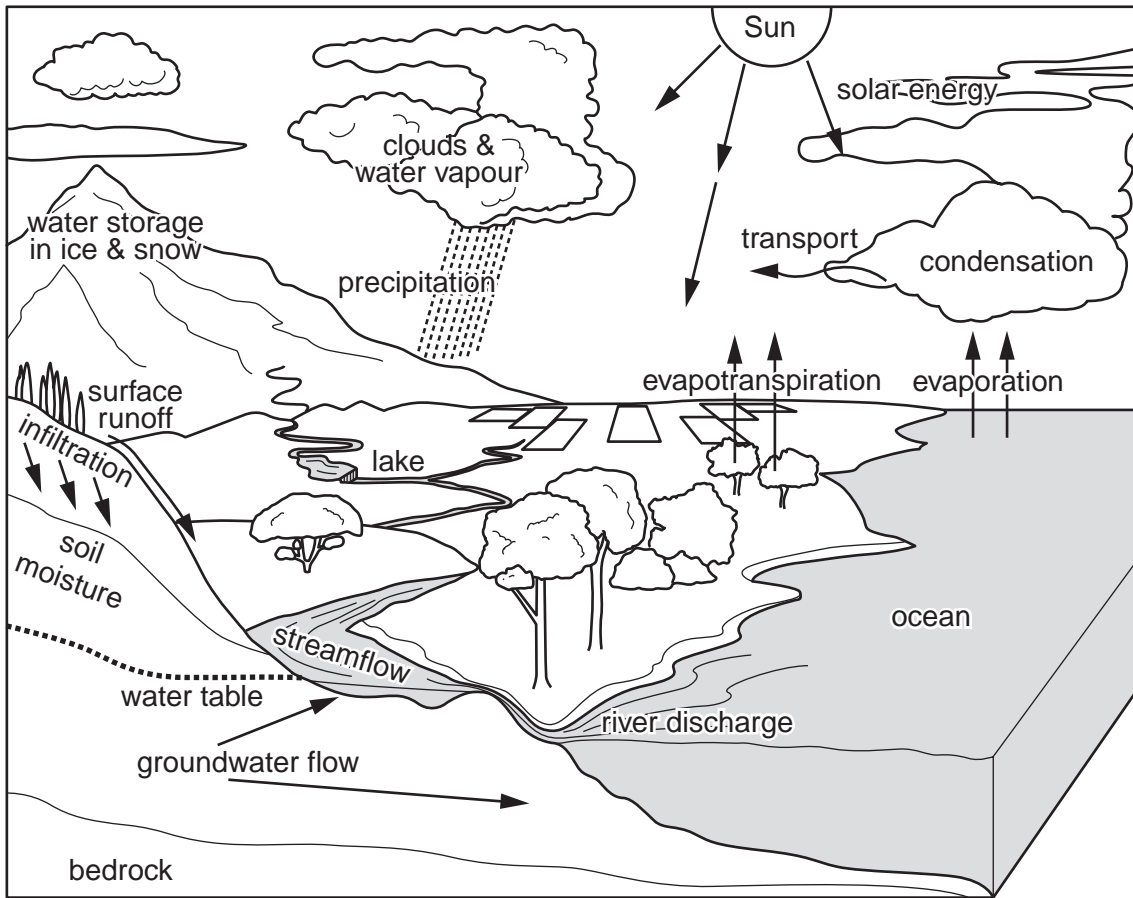


Fig. 2.1

(i) Describe the role of precipitation, infiltration, groundwater and clouds in the hydrological cycle.

precipitation

.....

infiltration

.....

groundwater

.....

clouds

.....[4]

Section B

Answer **one** question from this section.

- 3 (a) Briefly explain the differences in the rate of growth in world population within the periods labelled A, B and C in Fig. 3.1. [10]

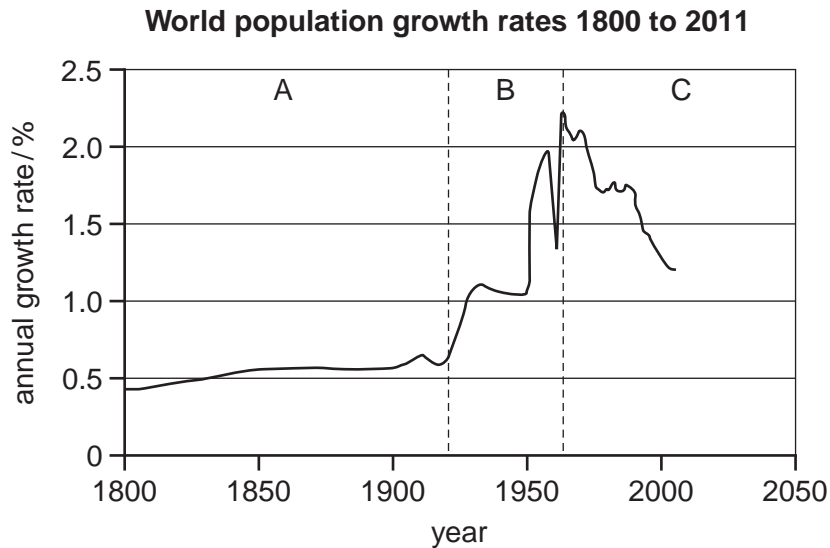


Fig. 3.1

- (b) With reference to examples of More Economically Developed Countries (MEDCs) and Less Economically Developed Countries (LEDCs), assess the extent to which a future sustainable global environment is dependent on reducing human population growth. [30]

[Total: 40]

- 4 (a) The IUCN Red List of Threatened Species is widely recognised as the most comprehensive global approach for evaluating the conservation status of plant and animal species. The list classifies the threat to a species into one of three levels: critical (most threatened), endangered and vulnerable (least threatened).

Fig. 4.1 is a summary of the threatened species list for 2007.

IUCN stands for the International Union for Conservation of Nature.

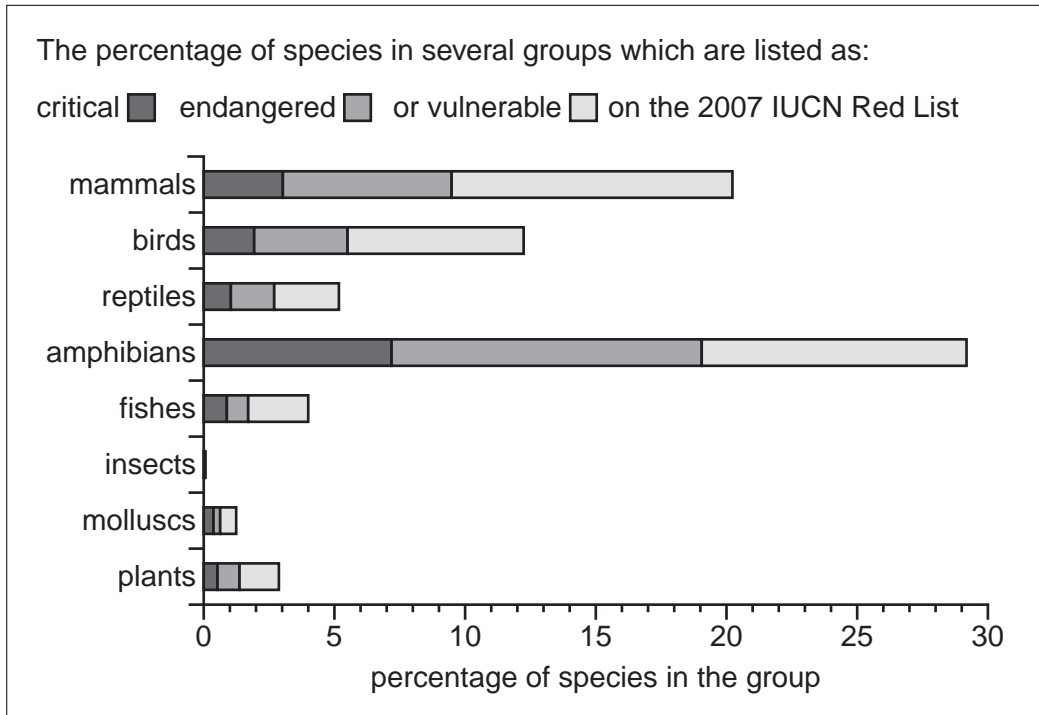


Fig. 4.1

Briefly outline how the summary of the Red List shown in Fig. 4.1 might indicate priorities and preferred methods of conservation and preservation of species. [10]

- (b) With reference to examples you have studied, assess the role of **two** different types of designated areas, such as National Parks or Wildlife Parks, in the conservation of species. [30]

[Total: 40]

- 5 (a) Fig. 5.1 shows the percentage of water consumed for different purposes in four countries. Briefly describe and give reasons for the different patterns of use. [10]

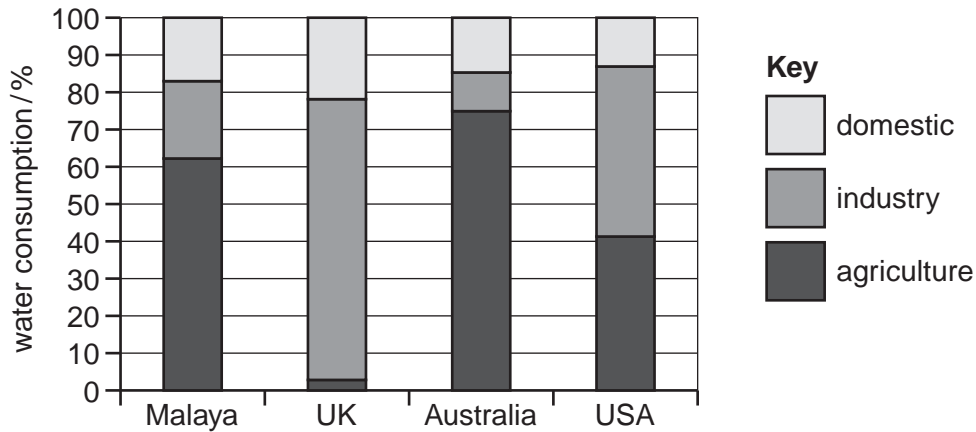


Fig. 5.1

- (b) With reference to an area with which you are familiar, assess the effects of **either** industrial **or** agricultural activity upon the natural supplies of water. For the area you have chosen, evaluate **one** method that is being used to achieve a sustainable supply of water. [30]

[Total: 40]

Copyright Acknowledgements:

Question 1(b) Fig. 1.2 Photograph © Destruction; Photograph number 2745899; iStockphoto.

Permission to reproduce items where third-party owned material protected by copyright is included has been sought and cleared where possible. Every reasonable effort has been made by the publisher (UCLES) to trace copyright holders, but if any items requiring clearance have unwittingly been included, the publisher will be pleased to make amends at the earliest possible opportunity.

University of Cambridge International Examinations is part of the Cambridge Assessment Group. Cambridge Assessment is the brand name of University of Cambridge Local Examinations Syndicate (UCLES), which is itself a department of the University of Cambridge.