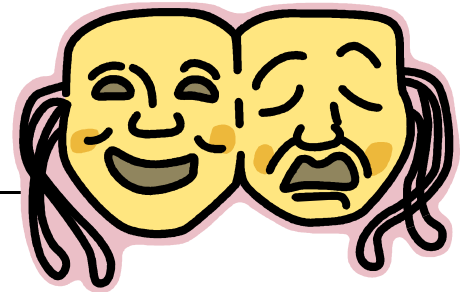


Issue 1
March 2010

Drama Newsletter



WELCOME

Welcome to the first edition of the quarterly Edexcel Drama Newsletter. You will be kept up to date with the latest drama information, useful contact details and gentle reminders to help support your delivery of the qualification. We hope you enjoy the new Drama Newsletter.

GCE

Important Notice - The I.C.E document has been updated. Visit

<http://www.edexcel.com/migrationdocuments/GCE%20New%20GCE/GCE-New-Spec-ICE-updated-27-Jan-10.pdf> to download your copy now.

6DR01 - Don't forget that the coursework submission deadline is 15 May 2010. Check your Edexcel Online account via your Examinations Officer in April for your moderator details.



6DR02 - The visit season has begun. The examination period is between 1 February and 28 May 2010. Your visiting examiner will contact you to arrange a suitable visit date for your centre. If you have not had any contact from your visiting examiner please contact the Edexcel Deployment team at gcedrama@edexcel.com. Example materials will be available shortly.

6DR03 - Do your group sizes meet the specification requirements? Check out the I.C.E for more information. Don't forget that non-assessed candidates can be used to make up the numbers if you have less than 3 candidates. Remember - if your candidates have exceeded the 3,500 word limit for the SWED, you must stop marking it at this point.



6DR04 Check that the time period chosen for Section C is different to the one chosen in Section A and B.

GCSE

Important Notice - June 2010 is the final year for the Edexcel GCSE in Drama 1699 specification. We hope that you have enjoyed teaching this specification and that you are looking forward to delivering the new GCSE 2009 Drama (2DR01) specification. Remember that the new 2DR01 specification will not be examined until June 2011.



1699 paper 01 - If the DVD/VHS recording for Paper 1: Unit 1 or Unit 2 has been damaged or is missing there are two solutions: 1) There is still time for you to do a further 6 hour assessment with a Record of Work, portfolio evidence from the candidates and a VHS/DVD recording of one complete session. 2) Complete a 'Missing Coursework' form for each sampled candidate and send it to Edexcel.

1699 paper 02 - The examination period is between 1 March and 28 May 2010. If you have not heard from your visiting examiner by mid February, please contact the Edexcel Deployment team at gcedrama@edexcel.com.



Grade Boundaries Summer 2009

The Grade Boundaries for GCSE Drama and GCE Drama are provided in the Principal Examiners' Reports (available on the Edexcel website) but are also reproduced here for your reference.

- As GCSE Drama 1699 is a linear qualification, the overall subject boundaries are given below.
- The new two-unit GCE AS Drama and Theatre Studies 8DR01 qualification is modular so we are providing unit level information, as well as the overall boundaries that apply to a two-unit AS qualification. The new GCE AS is different in requirements from the legacy GCE AS, moving from 3 units to 2 units. It was examined for the first time in summer 2009 and the overall standard of the new GCE AS Level has remained the same as the legacy GCE AS specification (8113).

GCSE 1699 Drama

	*	A	B	C	D	E	F	G	U
Boundary Mark	97	88	76	65	53	41	29	17	0

GCE Advanced Subsidiary

	Max Mark	A	B	C	D	E	U
UMS Boundary mark	200	160	140	120	100	80	0

GCE 6DR01 Exploration of Drama and Theatre

	Max Mark	A	B	C	D	E	U
RAW Boundary Mark	60	49	43	37	31	25	0
UMS Boundary mark	80	64	56	48	40	32	0

GCE 6DR02 Theatre Text in Performance

	Max Mark	A	B	C	D	E	U
RAW Boundary Mark	80	59	51	43	36	29	0
UMS Boundary mark	120	96	84	72	60	48	0



ResultsPlus is the only results analysis tool that provides teachers with an effective method of raising attainment across the full range of GCSE and GCE subjects. What's more, it comes free with Edexcel qualifications.

Quick and easy to use, it provides instant snapshots, graphs and reports that illustrate at a glance how students performed in their exams, right down to each exam question.

The understanding that ResultsPlus gives can only lead to dramatic improvements - from insights into how a specification is delivered to improvements in personalised learning.

ResultsPlus will save you time and will allow you to:

- undertake an in-depth analysis of where your centre did well and where it didn't do well, and understand how to make improvements
- spot performance trends at a glance, by accessing one-click reports (for example, comparing genders, subjects, or similar schools or classes)
- use Skills Maps for Maths and Science subjects to map performance against specific areas of the specification
- give your students, if you wish, online access to their results come results day - including the 'Edexcel Gradeometer', which demonstrates to the student how close they were to the grade boundary
- share best teaching practice across the department
- develop effective revision plans for students taking resits

How to get started with ResultsPlus?

All you need to start using ResultsPlus is an Edexcel Online username and password. If you don't have these yet, just call us on 0844 576 0024 and we'll set up an account for you.



ASK The Expert

Ask the Expert was developed after extensive consultation to find out what services and support you need. We understand that you need concise and definite answers in writing, so Ask the Expert puts you in direct email contact with our senior subject experts. Upon receiving your questions, our experts will send you a written response within two working days.

Our experts are there to answer your **detailed, subject-specific** questions concerning the teaching of qualifications. Questions that are more general to do with the administration of the qualification, such as post-results or entry-related enquiries, should be directed to our customer service team. Alternatively, you can use our online question and answer service, **Ask Edexcel**. By only sending appropriate questions to Ask the Expert, you will help us ensure that the service is more responsive.

Who are our Experts?

Our experts are our senior examiners and senior moderators who have extensive backgrounds and experience in their respective subjects. Our experts are heavily involved in our specifications and developing qualifications.

How do I submit a question to Ask the Expert?

You can send an email to gcedramaandperformingarts@edexcelexperts.co.uk or gcsedrama@edexcelexperts.co.uk. When sending an email please include the relevant specification entry code, unit code and programme number to help us deal with it as soon as possible. Alternatively you can submit an online Ask the Expert enquiry form. Please remember that most of our experts work throughout the day, however, they will respond to your query as soon as possible.



Training from Edexcel is a specialist training division within Edexcel that has grown and developed in response to customer demand for focused, high quality training.

To search for a training event and book online, please use our **online booking system** at <http://www.edexcel.com/resources/training/Pages/home.aspx> Please note that in order to book online, you will need an Edexcel Online account. For information on how to set up an Edexcel Online account, please call **0844 576 0024**.

Alternatively, you can see what events are available by referring to our interactive Training Directory pdfs that cover online events and our full training programme. To book, you can then telephone our Training team, or download the **training course booking form** and post or fax it to us. See the Course Search and bookings page at <http://www.edexcel.com/resources/training/Pages/book-course.aspx> for our address and telephone and fax numbers.



Communities from Edexcel

Edexcel's community area is a message board designed to enable you to access peer-to-peer support from fellow Edexcel teaching and delivery staff in schools and colleges.

You will need to login with your Edexcel username and password to contribute.

Your username will be your email address; if you have forgotten your password, you can generate a new one by clicking on the Edexcel [Forgotten your password?](#) link.

We hope you find these forums useful. If you can't find the help you need here and wish to ask us about an aspect of delivering an Edexcel qualification, you can contact us using the details on our website at www.edexcel.com/contactus

To access the Communities from Edexcel page please go to <http://community.edexcel.com/> and click on 'All Subjects'.

Edexcel Publications

The Publications Catalogue lists all material available to support Edexcel qualifications, including our own dedicated suites of learning and teaching resources. Please go to <http://www.edexcel.com/resources/publications/Pages/home.aspx> for more information. Centres can also sign in to Edexcel Online and select and order publications(excluding resources). To find information about Edexcel resources, either go the Resources link at <http://www.edexcel.com/resources/Pages/home.aspx> or browse the Pearson Catalogues.

If you'd prefer, we can send you a printed copy of the Publications Catalogue. Just call Edexcel Publications on 01623 467 467 or email publications@linney.com, quoting Publication Code Z021751.

All Edexcel publications (except the learning and teaching resources) can be ordered direct from:

Edexcel Publications

Adamsway

Mansfield

Notts

NG18 4FN

Tel: 01623 467 467

Fax: 01623 450 481

Email: publications@linney.com



All Edexcel learning and teaching resources can be ordered from the Pearson website.

Key Dates and Summary of Events

GCSE

Event	Date	Other Information
Notification of Moderator for Paper 1: Units I and II (1699 paper 01)	April/May 2010	Edexcel will send details of moderators to Examinations Officers within centres.
Notification of Visiting Examiner for Paper 2 (1699 paper 02)	February/March 2010	Examiners will contact centres directly
Examination period for Paper 2 (1699 paper 02)	March 2010 - end of May 2010	
Deadline for receipt of OPTEMS, materials and marks for Paper 1: Units I and II to Moderators (1699 paper 01)	15 May 2010	Work may be dispatched as soon as the centre has their Moderator's details

GCE

Event	Date	Other Information
Notification of Moderators for Unit 1 (6DR01) and Unit 3 (6DR03)	April/May 2010	Edexcel will send details of Moderators to Examination Officers in centres.
Notification of Visiting Examiner for Unit 2 (6DR02)	January 2010	Examiners will contact centres directly.
Examination period for Unit 2 (6DR02)	1 February to 28 May 2010	
Deadline for receipt of OPTEMS, materials and marks to Unit 1 (6DR01) and Unit 3 (6DR03) moderators.	15 May 2010	Work should be dispatched as soon as the centre has their Moderator's details
Examination date for Unit 4 (6DR04)	9 June 2010 - Wednesday AM	Duration 2h 30m

If you have not heard from your visiting examiner for GCSE Drama 1699 paper 02 or GCE Drama 6DR02 paper 01, please contact the Edexcel Deployment team at gcsedrama@edexcel.com or gcedrama@edexcel.com



Contact Us:



GCSE 0844 576 0027
GCE 0844 576 0025
drama.assessment@edexcel.com



gcsedrama@edexcelexperts.co.uk
gcedramaandperformingarts@edexcelexperts.co.uk



www.edexcelonline.com



<http://edexcel--5571.custhelp.com/app/home>



www.edexcel.com
<http://www.edexcel.com/quals/gcse/gcse-leg/drama/Pages/default.aspx>
<http://www.edexcel.com/quals/gce/gce08/drama/Pages/default.aspx>