

General Certificate of Education
June 2007
Advanced Level Examination



DESIGN AND TECHNOLOGY: PRODUCT DESIGN PD6T
(TEXTILES)
Unit 6 Written Paper

Friday 15 June 2007 9.00 am to 12 noon

For this paper you must have:

- an unlined answer book (7024) which is provided separately
- normal writing and drawing instruments.

Time allowed: 3 hours

Instructions

- Use blue or black ink or ball-point pen. Use pencil and coloured pencils only for drawing.
- Write the information required on the front of your answer book. The *Examining Body* for this paper is AQA. The *Paper Reference* is PD6T.
- Answer **four** questions.
Answer **one** question from each of Sections A, B and C and **one** other question from any section.

Information

- The marks for questions are shown in brackets.
- The maximum mark for this paper is 100.
Four of these marks will be awarded for using good English, organising information clearly and using specialist vocabulary where appropriate.
- There are 24 marks for each question.

Advice

- Illustrate your answers with sketches and/or diagrams wherever you feel it is appropriate.

Answer **one** question from **each** of the three sections and **one** other question from any section.

SECTION A

Materials and Components

- 1 (a) How can different cross-sectional shapes of fibres affect the fabrics made from them? *(8 marks)*
- (b) Name and describe **two** different methods of producing textured yarn. *(2 × 4 marks)*
- (c) Name and describe **two** different novelty yarns.
Use notes and sketches to show how each novelty yarn is constructed. *(2 × 4 marks)*
- 2 (a) Many fabrics consist of blends or mixtures of different fibres.
- (i) Explain the difference between blended and mixture fabrics. *(6 marks)*
- (ii) Giving specific examples, explain why different fibres are blended or mixed in fabric construction. *(10 marks)*
- (b) Name and describe **two** recently developed branded fibre products.
Explain what each of these branded fibre products are used for when constructed into fabrics. *(2 × 4 marks)*

SECTION B**Design and Market Influences**

- 3 Advances in new technology have inspired textile product designers to create new concepts in clothing and lifestyle products.
- (a) Using notes and diagrams describe and illustrate in detail **two** different innovative textile products created for modern contemporary living. The products should incorporate new technology and interact with the user and/or the environment for which they are intended. *(2 × 7 marks)*
- (b) Explain how **each** of the products described in part (a) function and interact with the user and/or environment. *(2 × 5 marks)*

- 4 A number of designers have been very influential in textile product design.

Name **two** textile or fashion designers whom you think have made an important contribution to textile product design.

Describe some of the products these designers have produced and evaluate the influence of these designers on textiles or fashion design. *(2 × 12 marks)*

Turn over for Section C

Turn over ▶

SECTION C**Processes and Manufacture**

- 5 (a) What is a *basic* block pattern? (2 marks)
- (b) Explain, using diagrams, how the two block patterns in **Figure 1** and **Figure 2** can be modified to create the patterns required to produce the blouse shown in **Figure 3**. Draw any additional pattern pieces required to complete the blouse shown. Include relevant pattern markings. (10 marks)

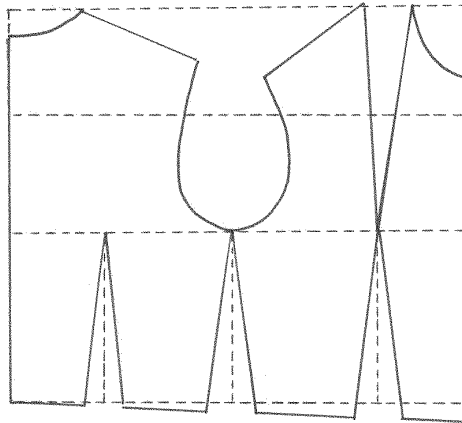
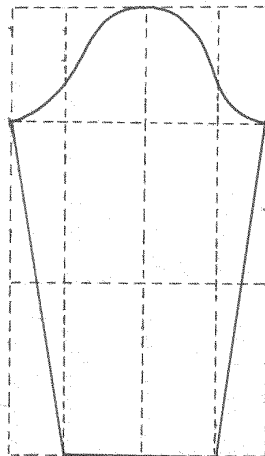
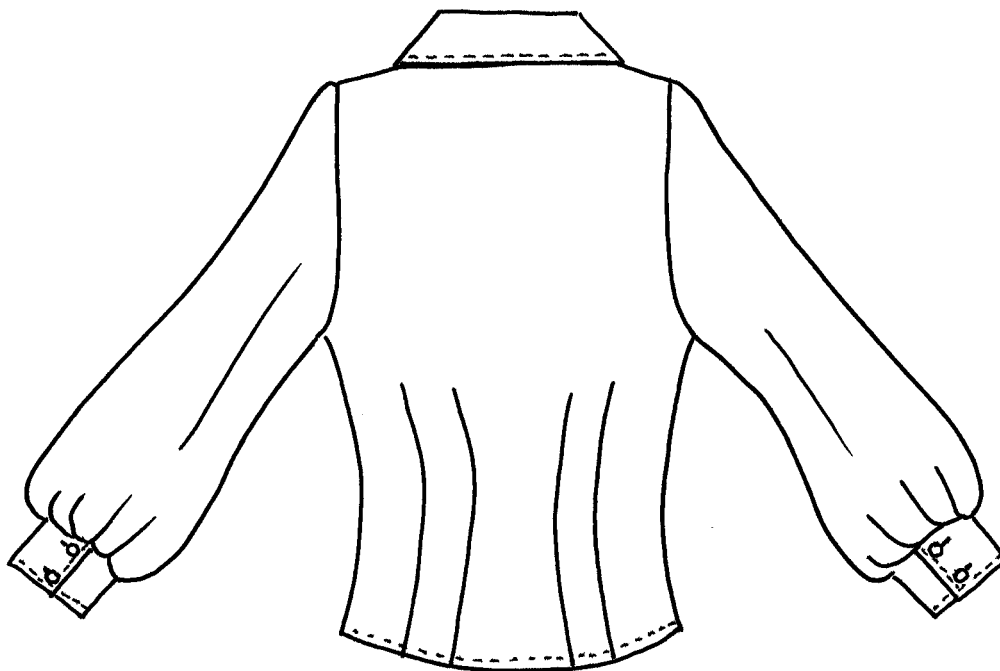
Figure 1**Figure 2**

Figure 3



- (c) Describe in detail how Information Communication Technology (ICT) and Computer Aided Manufacture (CAM) have affected the production of patterns for commercial use. *(12 marks)*

Turn over ►

- 6 (a) Explain the role of the HLCC (Home Laundering Consultative Council). *(3 marks)*
- (b) With reference to the HLCC explain in detail the required care and maintenance of the following.
In each case, using the HLCC symbols, produce a relevant care label.
- (i) A cashmere/wool tailored jacket *(7 marks)*
- (ii) Permanently pleated fashionable polyester blouse *(7 marks)*
- (iii) Domestic 100% cotton curtains for a living room *(7 marks)*

END OF QUESTIONS

There are no questions printed on this page

There are no questions printed on this page