

Please write clearly, in block capitals.

Centre number

--	--	--	--	--

Candidate number

--	--	--	--

Surname

Forename(s)

Candidate signature

A-Level

DESIGN AND TECHNOLOGY (FASHION & TEXTILES)

Paper 2 – Designing and Making Principles

Date of Exam

Morning

Time allowed: 1h30m

Materials

For this paper you must have:

- normal writing and drawing instruments
- a scientific calculator

Instructions

- Use black ink or black ball-point pen. Use pencil only for drawing.
- Fill in the boxes at the top of this page.
- Answer all questions.
- You must answer the questions in the spaces provided. Do not write outside the box around each page or on blank pages.
- Do all rough work in this book. Cross through any work that you do not want to be marked.

Information

- The marks for questions are shown in brackets
 - The maximum mark for this paper is 80
 - There are 30 marks in Section A and 50 marks in Section B
-

SECTION A - Product Analysis

This source has been removed due to third-party copyright restrictions.

Figure 1

1 . 3

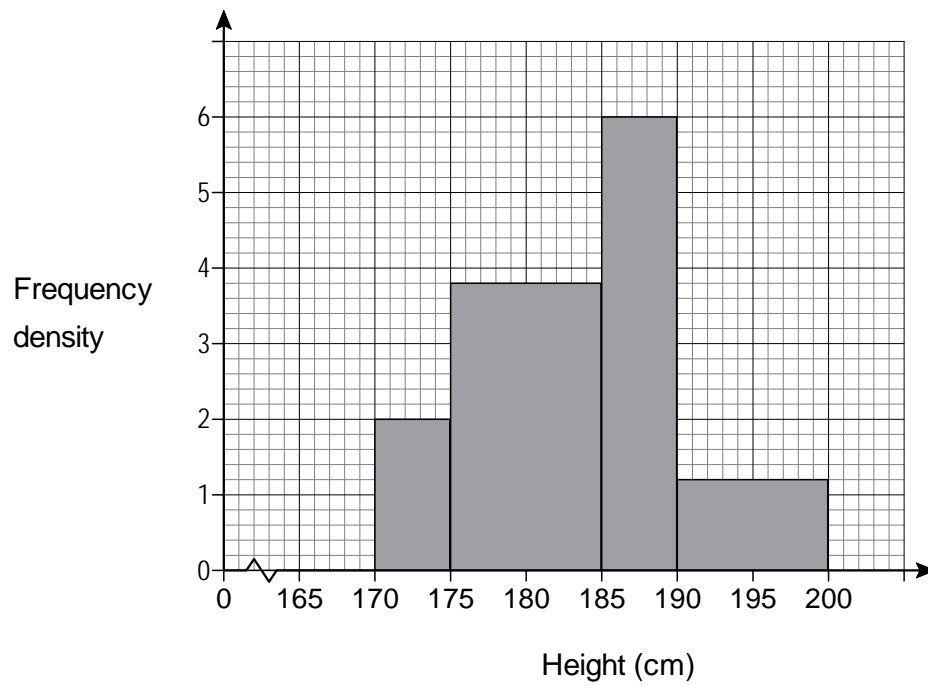
The epaulettes and storm shield are labelled in **Figure 2**. They are still a feature of the modern day trench coat.

Explain the reasons for keeping these design features.

[6 marks]

This source has been removed due to third-party copyright restrictions.

1 . 5 The histogram represents the height of potential customers for the trench coat.



Show that this histogram represents 90 customers

[2 marks]

- 1 . 6 The sale price of each coat is £75 except for those customers with a height greater than 190cm, where an extra 5% is added to cover the cost of additional material.

What percentage of the total sales revenue is generated by sales to potential customers with a height greater than 190cm?

[2 marks]

PLEASE TURN PAGE FOR SECTION B

SECTION B – Commercial Manufacture

This source has been removed due to third-party copyright restrictions.

DO NOT WRITE ON THIS PAGE

PLEASE TURN OVER FOR NEXT QUESTION

6 . 1

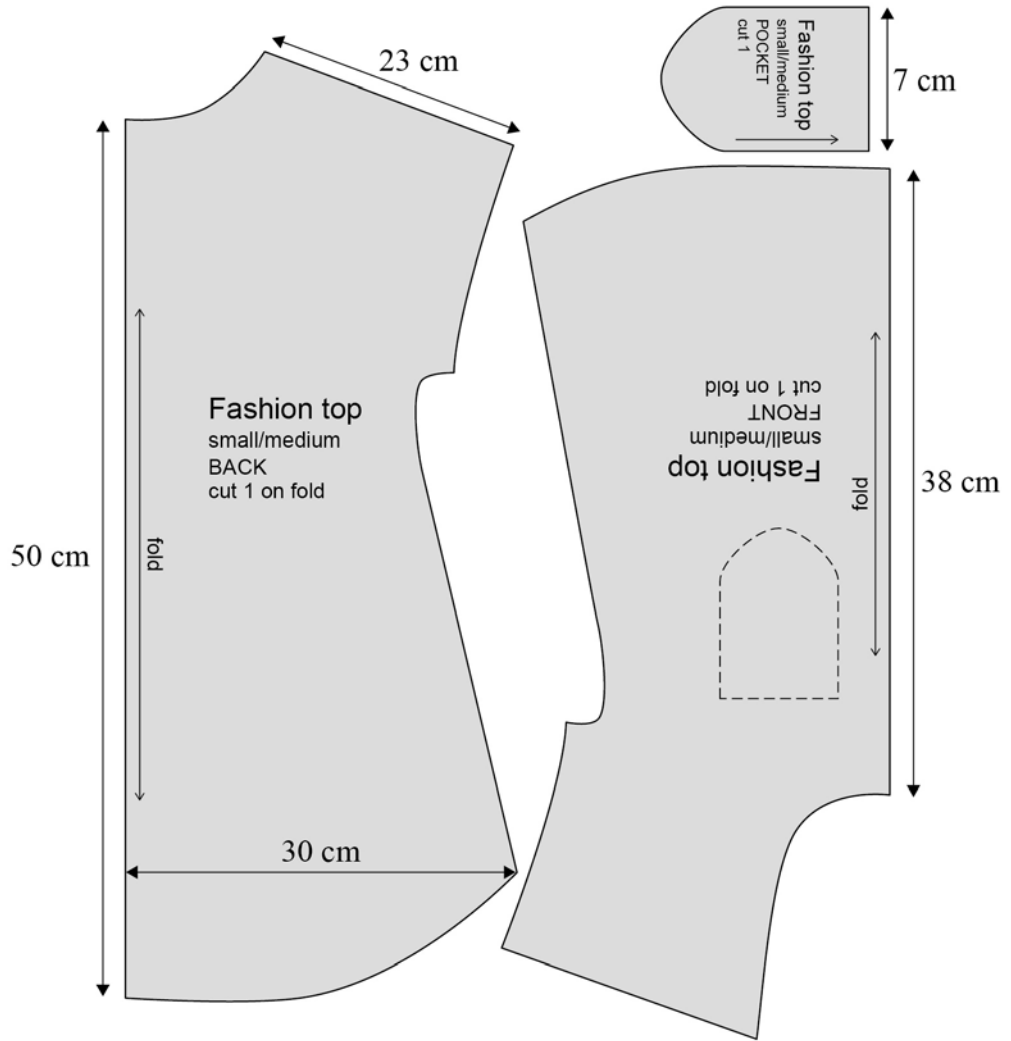
Study the fashion top pattern below. The pattern needs to be graded to make a new loose-fitting top.

The new pattern is 6cm wider than the original pattern.

Work out the ratio between the original and the new pattern.

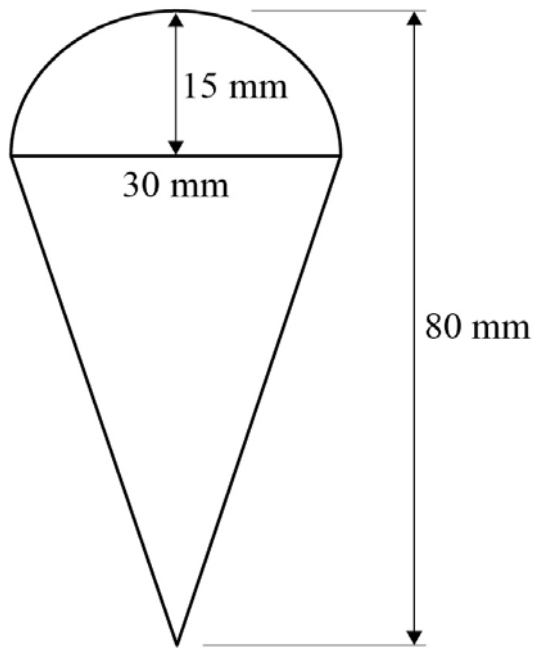
Work out the new length of the centre back **and** width of the new pocket.

[4 marks]



6 . 2

The shape of an ice cream cone is embroidered onto the fashion top pocket. The stitch type uses 50mm of thread for every 10mm stitched. How much thread is needed to stitch the design shown in the diagram below?

[3 marks]

END OF QUESTIONS

aqa.org.uk

Copyright © 2016 AQA and its licensors. All rights reserved.
AQA Education (AQA) is a registered charity (registered charity number 1073334) and a company limited by guarantee registered in England and Wales (company number 3644723). Registered address: AQA, Devas Street, Manchester M15 6EX

9 February 2017