

CAMBRIDGE INTERNATIONAL EXAMINATIONS
General Certificate of Education Advanced Subsidiary Level

Classical Studies 8283/02

(School-based syllabus)

Paper: Roman Civilisation

Nov 2003

PLATES FOR SECTION FOUR
ROMAN ART AND ARCHITECTURE



Plate 1

(Turn over

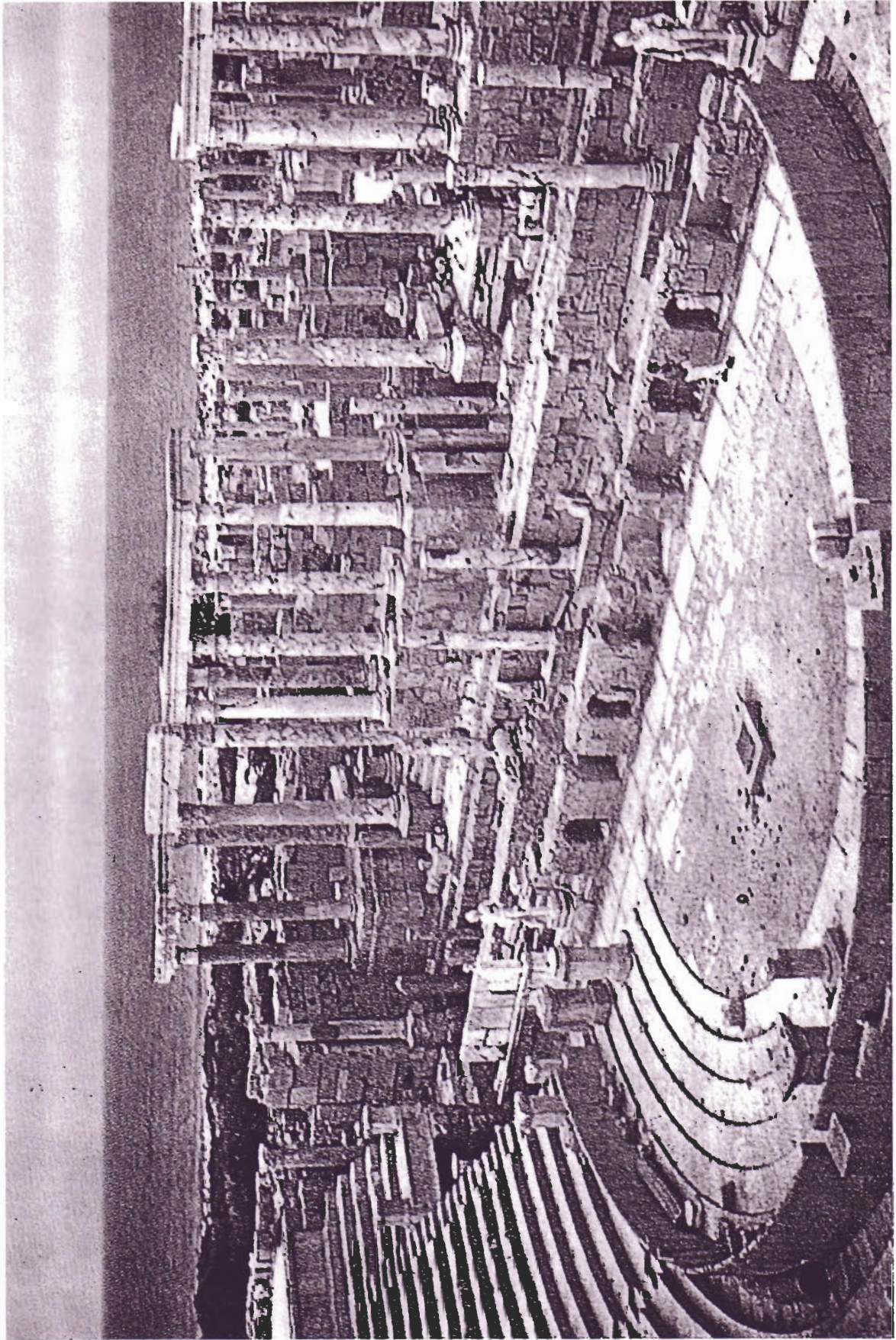


Plate 2

[Turn over

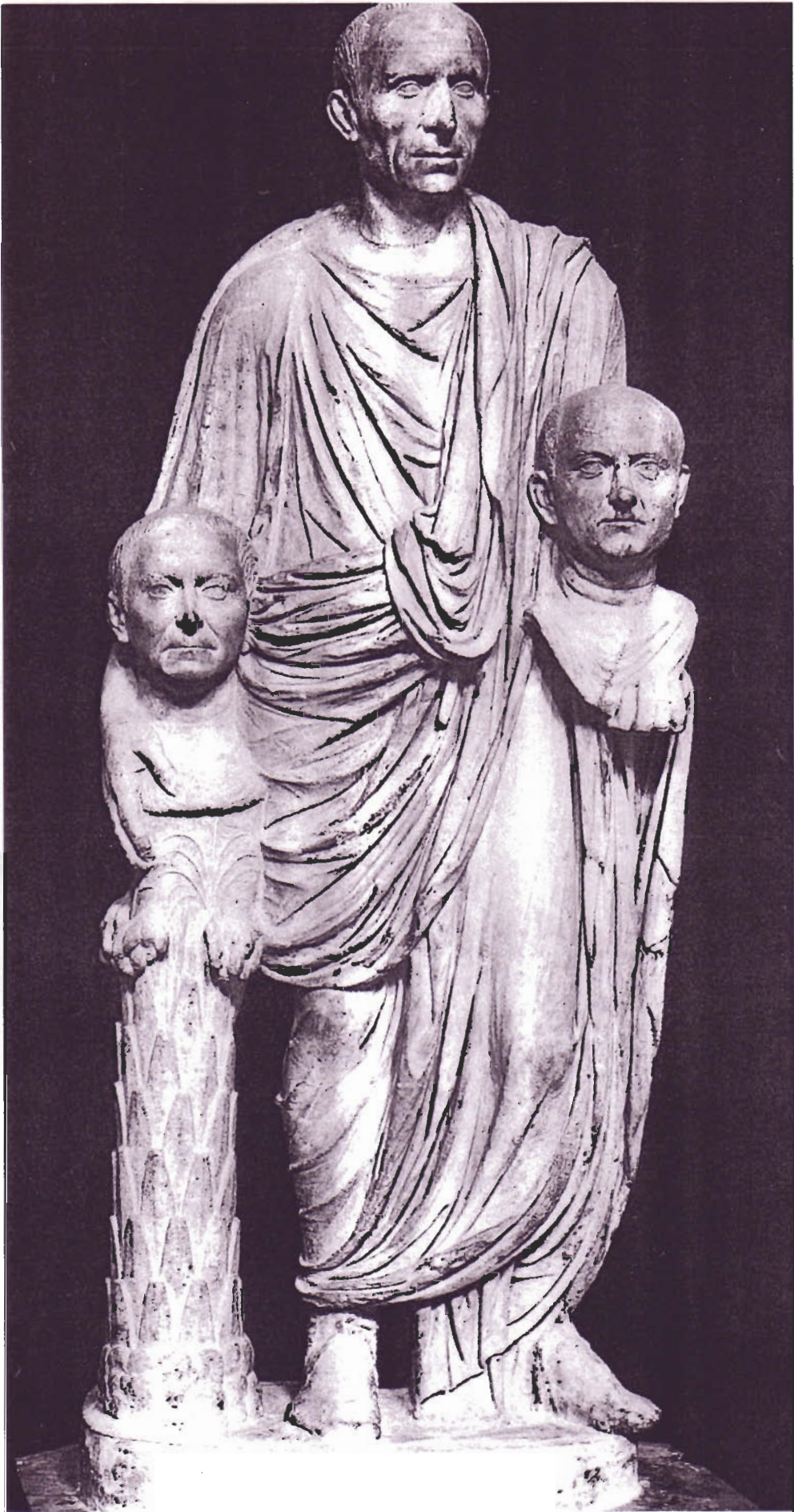


Plate 3