

Wednesday 5 June 2013 – Morning

A2 GCE CLASSICS: CLASSICAL CIVILISATION

F388/01/1 Art and Architecture in the Greek World

INSERT – QUESTION BOOKLET

Duration: 2 hours



INSTRUCTIONS TO CANDIDATES

- Read each question carefully. Make sure you know what you have to do before starting your answer.
- Answer **one** question from Section A and **one** question from Section B.

INFORMATION FOR CANDIDATES

- The number of marks is given in brackets [] at the end of each question or part question.
- In this paper you are encouraged to use diagrams, sketches etc., where appropriate, to illustrate your answers.
- The total number of marks for this paper is **100**.
- This document consists of **8** pages. Any blank pages are indicated.

INSTRUCTION TO EXAMS OFFICER/INVIGILATOR

- Do not send this Insert for marking; it should be retained in the centre or recycled. Please contact OCR Copyright should you wish to re-use this document.

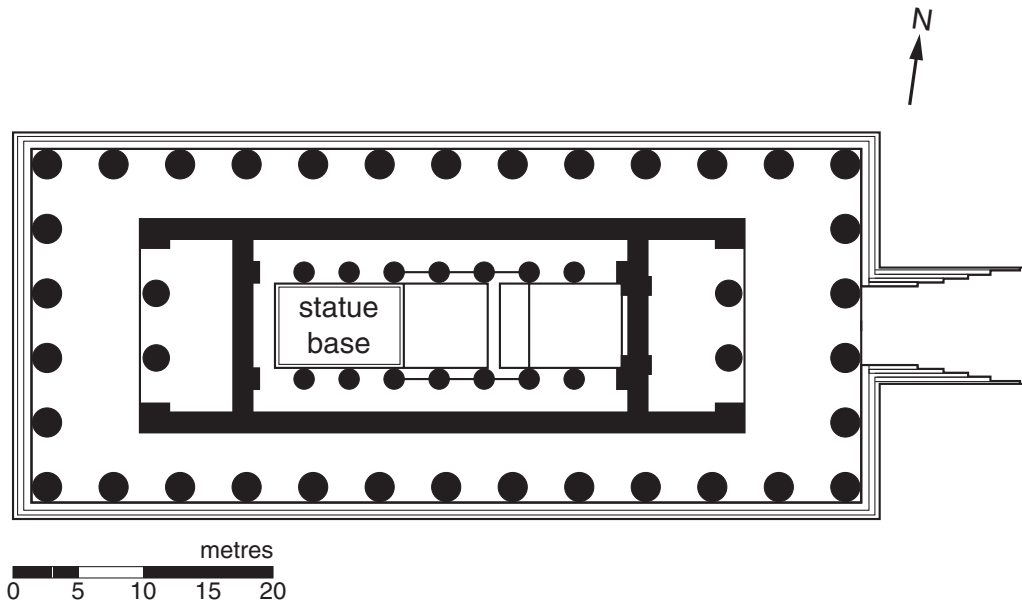
Answer **one** question from Section A and **one** question from Section B.

SECTION A – Commentary Questions

Answer **either** Question 1 **or** Question 2.

Marks are awarded for the quality of written communication in your answer.

1 Study the illustration and answer the questions.



Ground plan of the temple of Zeus at Olympia

- (a) 'The major architectural achievement of the 5th century BC.' How far would you agree with this description of the temple of Zeus at Olympia? [25]
- (b) 'Impressive but not very practical.' Do you think this statement applies more to the buildings and layout of the sanctuary of Zeus at Olympia or the sanctuary of Apollo at Delphi? [25]

Do **not** answer this question if you have already answered Question 1.

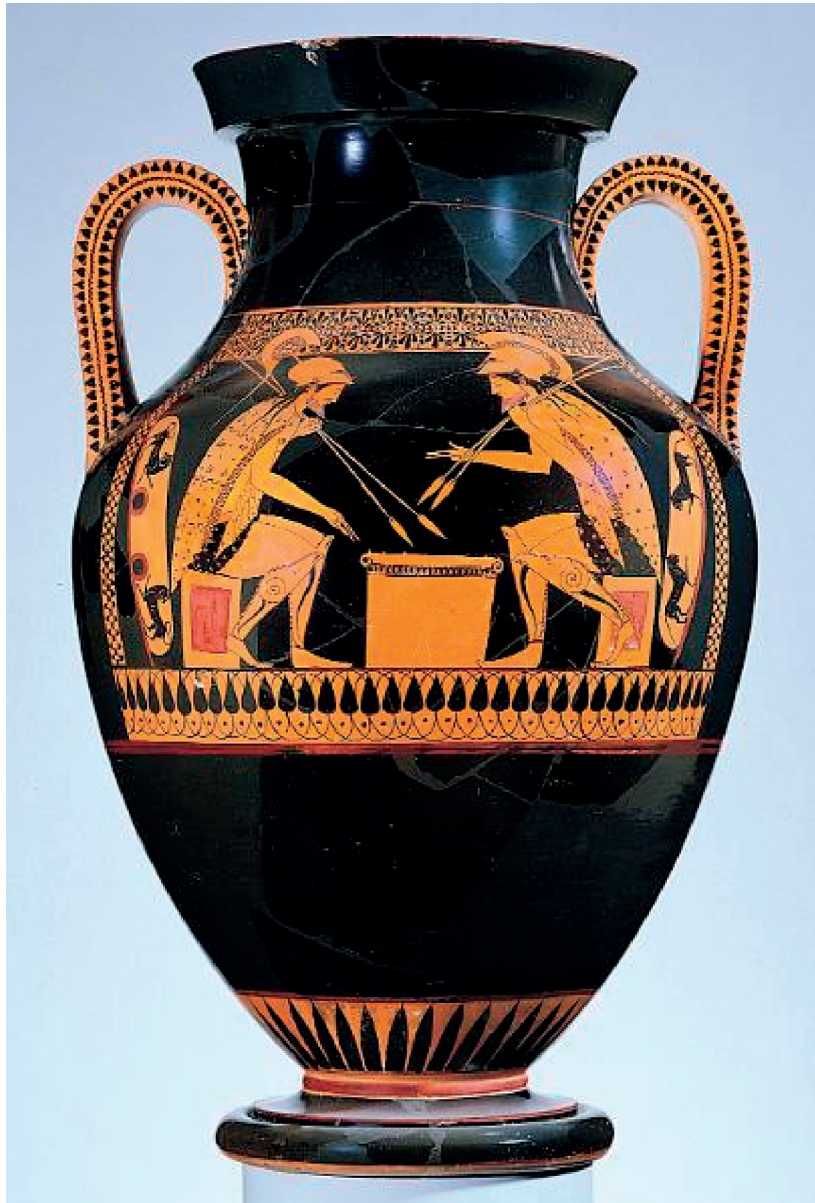
Marks are awarded for the quality of written communication in your answer.

2 Study the photographs and answer the questions.



Pot A

Belly amphora depicting Achilles and Ajax, painted by Exekias



Pot B

Belly amphora depicting Achilles and Ajax, painted by the Andokides Painter

- (a) With reference to the photographs of pot A and pot B, explain the gains and losses in the transition from the black-figure technique to the red-figure technique. [25]
- (b) 'The most innovative and skilful black-figure artist.' How far does your study of vase-painting support this view of Exekias? [25]

[Section A Total: 50]

SECTION B – Essays

Answer **one** question.

Start your answer on a new page.

Marks are awarded for the quality of written communication in your answer.

3 Study the statues below.



Sounion Kouros



Diskobolos

With reference to these statues, and other works of your choice, explain whether you prefer the Archaic or the Early Classical style of free-standing sculpture. **[50]**

- 4 'Regular, repetitive and boring.' How far do you agree with this assessment of Archaic art? Support your answer with reference to Archaic art from **at least two** of the following areas: vase painting, architectural sculpture and free-standing sculpture. [50]

[Section B Total: 50]

**Copyright Information**

OCR is committed to seeking permission to reproduce all third-party content that it uses in its assessment materials. OCR has attempted to identify and contact all copyright holders whose work is used in this paper. To avoid the issue of disclosure of answer-related information to candidates, all copyright acknowledgements are reproduced in the OCR Copyright Acknowledgements Booklet. This is produced for each series of examinations and is freely available to download from our public website (www.ocr.org.uk) after the live examination series.

If OCR has unwittingly failed to correctly acknowledge or clear any third-party content in this assessment material, OCR will be happy to correct its mistake at the earliest possible opportunity.

For queries or further information please contact the Copyright Team, First Floor, 9 Hills Road, Cambridge CB2 1GE.

OCR is part of the Cambridge Assessment Group; Cambridge Assessment is the brand name of University of Cambridge Local Examinations Syndicate (UCLES), which is itself a department of the University of Cambridge.