

Tuesday 29 May 2012 – Morning

A2 GCE CLASSICS: CLASSICAL CIVILISATION

F388 Art and Architecture in the Greek World

Candidates answer on the Answer Booklet.

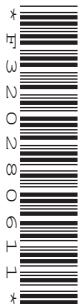
OCR supplied materials:

- 16 page Answer Booklet
(sent with general stationery)

Other materials required:

None

Duration: 2 hours



INSTRUCTIONS TO CANDIDATES

- Write your name, centre number and candidate number in the spaces provided on the Answer Booklet. Please write clearly and in capital letters.
- Use black ink. HB pencil may be used for graphs and diagrams only.
- Answer **one** question from Section A and **one** question from Section B.
- Read each question carefully. Make sure you know what you have to do before starting your answer.
- Do **not** write in the bar codes.

INFORMATION FOR CANDIDATES

- The number of marks is given in brackets [] at the end of each question or part question.
- In this paper you are encouraged to use diagrams, sketches etc., where appropriate, to illustrate your answers.
- The total number of marks for this paper is **100**.
- This document consists of **8** pages. Any blank pages are indicated.

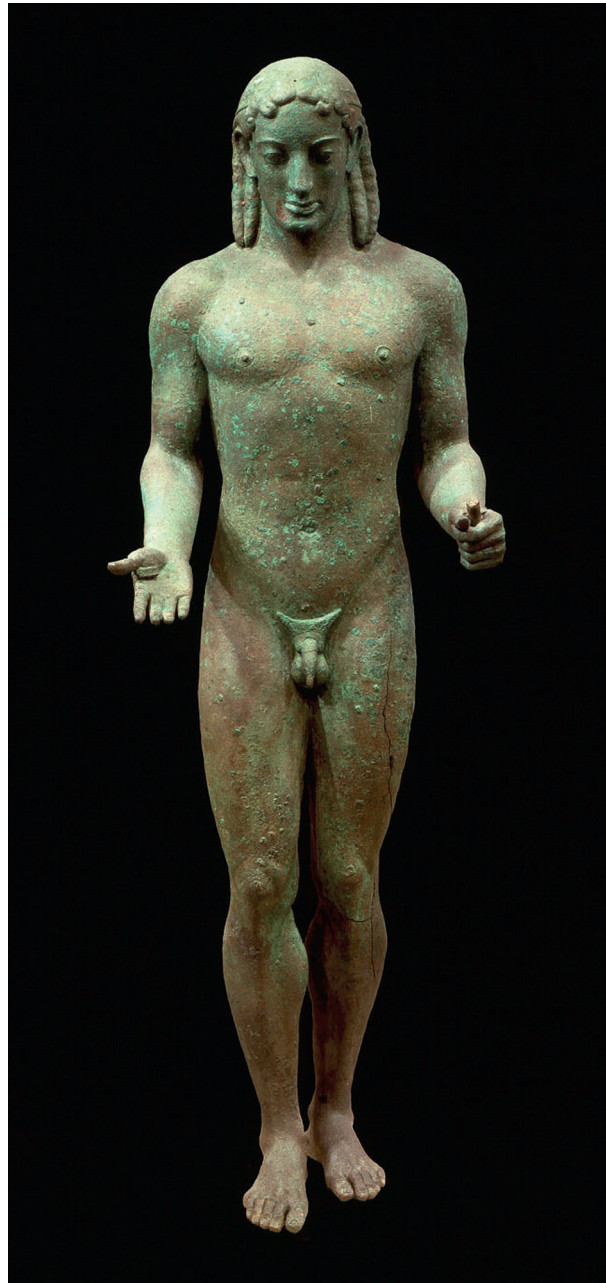
Answer **one** question from Section A and **one** question from Section B.

Section A: Commentary Questions

Answer **either** Question 1 **or** Question 2.

Marks are awarded for the quality of written communication in your answer.

1 Study the photographs and answer the questions.



Statue A



Statue B

- (a) To what extent is **Statue A** (the Piraeus Apollo) typical of the Archaic period? [25]
- (b) Compare **Statue A** with **Statue B** (the Aristodikos Kouros). Discuss which statue you find the more aesthetically pleasing. [25]

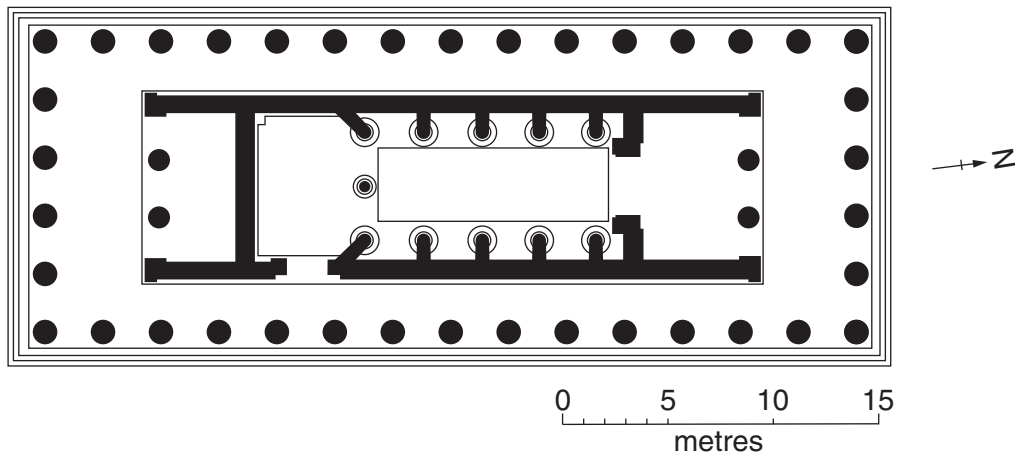
Do **not** answer this question if you have already answered Question 1.

Marks are awarded for the quality of written communication in your answer.

2 Study the illustrations and answer the questions.



The temple of Apollo at Bassae



Ground plan of the temple of Apollo at Bassae

- (a) 'Old-fashioned and conventional' or 'different and daring'. Which description of the design of the temple of Apollo at Bassae do you think is more appropriate? [25]
- (b) What advantages did Greek architects gain from combining the architectural orders in buildings? In your answer, you should include discussion of specific buildings in which the Doric and Ionic orders were combined. [25]

[Section A Total: 50]

Section B: Essays

Answer **one** question.

Start your answer on a new page.

Marks are awarded for the quality of written communication in your answer.

- 3** Do you prefer the work of the Pioneers (eg Euthymides) or the work of the Mannerists (eg the Meidias Painter)? You should support your answer with reference to specific pots by **both** groups of painters. **[50]**
- 4** 'Rich in narrative.' To which of the pediments you have studied does this statement best apply? You should support your answer with reference to **at least three** pediments. **[50]**

[Section B Total: 50]

**Copyright Information**

OCR is committed to seeking permission to reproduce all third-party content that it uses in its assessment materials. OCR has attempted to identify and contact all copyright holders whose work is used in this paper. To avoid the issue of disclosure of answer-related information to candidates, all copyright acknowledgements are reproduced in the OCR Copyright Acknowledgements Booklet. This is produced for each series of examinations and is freely available to download from our public website (www.ocr.org.uk) after the live examination series.

If OCR has unwittingly failed to correctly acknowledge or clear any third-party content in this assessment material, OCR will be happy to correct its mistake at the earliest possible opportunity.

For queries or further information please contact the Copyright Team, First Floor, 9 Hills Road, Cambridge CB2 1GE.

OCR is part of the Cambridge Assessment Group; Cambridge Assessment is the brand name of University of Cambridge Local Examinations Syndicate (UCLES), which is itself a department of the University of Cambridge.