

**ADVANCED SUBSIDIARY GCE UNIT
CLASSICAL CIVILISATION (JACT)**

2744

Archaeology 1

TUESDAY 5 JUNE 2007

Morning

Time: 1 hour 30 minutes

Additional materials: Answer Booklet (8 pages)



* GCE / T 3 4 1 2 5 *

INSTRUCTIONS TO CANDIDATES

- Write your name, Centre number and Candidate number in the spaces provided on the answer booklet.
- You must answer **one** question from Section A and **one** question from Section B.
- Start your answer to each question on a new page.
- Use an 8 page answer booklet followed by a 4 page booklet if extra paper is required.

INFORMATION FOR CANDIDATES

- The number of marks is given in brackets [] at the end of each question or part question.
- All questions are worth 50 marks in total including 5 marks for quality of written communication.
- The total number of marks for this paper is 100.
- In this paper you are encouraged to use sketches, diagrams etc., where appropriate, to illustrate your answers.

ADVICE TO CANDIDATES

- Read each question carefully and make sure you know what you have to do before starting your answer.

This document consists of **4** printed pages.

Section A

Answer **one** question from this section.

A1 Study the illustrations below and answer the questions that follow.

Photograph A



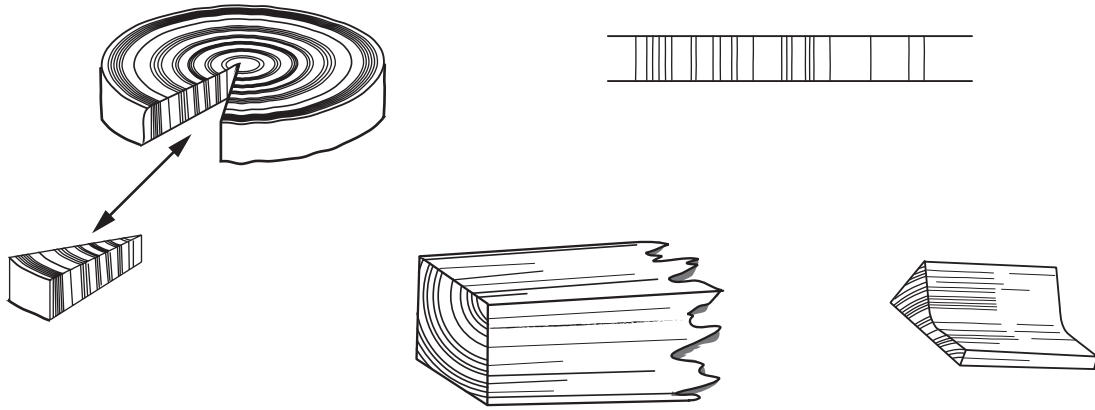
© G H Norrie

Photograph B

- (a) (i) Briefly explain what each photograph shows.
- (ii) Explain why photograph B is more useful to an archaeologist than photograph A is. [10]
- (b) Explain how **at least two** methods of records kept by archaeologists have been used at Classical sites. [15]
- (c) How have photographs been used in educating the public about the work of archaeologists? In your answer, you should include discussion of **at least two** Classical sites. [20]

[Quality of Written Communication: 5 marks]
[Total: 50 marks]

A2 Study the illustration below and answer the questions that follow.



Adapted from illustration by D Wardle

- (a) (i) Identify the technique being shown in this diagram.
- (ii) Briefly explain how this technique can be used by archaeologists in dating. [10]
- (b) Identify **two** other dating techniques and explain how they have been used by archaeologists at Classical sites. [15]
- (c) With reference to **at least one** Classical site, describe how archaeologists have been able to build up a timeline for a particular Classical culture. [20]

[Quality of Written Communication: 5 marks]

[Total: 50 marks]

Section B

Answer **one** question from this section.

Start your answer to each question on a new page.

- B3** 'Archaeologists have caused more harm than good by excavating.' Explain to what extent you agree or disagree with this statement. [50]
- B4** Which site have you found most useful in learning about the way in which a Classical civilisation lived? Explain your choice. [50]

Copyright Acknowledgements:

- A1
Photo A From *Classical Archaeology in the Field: Approaches*, L Bowkett, S Hill, D and K A Wardle, Bristol Classical Press, 2001
Photo B Photo by G H Norrie from *Classical Archaeology in the Field: Approaches*, L Bowkett, S Hill, D and K A Wardle, Bristol Classical Press, 2001
- A2
Diagram Adapted from Fig.7.5, D Wardle: *Classical Archaeology in the Field: Approaches*, L Bowkett, S Hill, D and K A Wardle, Bristol Classical Press, 2001

Permission to reproduce items where third-party owned material protected by copyright is included has been sought and cleared where possible. Every reasonable effort has been made by the publisher (OCR) to trace copyright holders, but if any items requiring clearance have unwittingly been included, the publisher will be pleased to make amends at the earliest possible opportunity.

OCR is part of the Cambridge Assessment Group. Cambridge Assessment is the brand name of University of Cambridge Local Examinations Syndicate (UCLES), which is itself a department of the University of Cambridge.