

| | | | | | | | | | | |
|---------------------|--|--|--|--|--|------------------|--|--|--|--|
| Centre Number | | | | | | Candidate Number | | | | |
| Surname | | | | | | | | | | |
| Other Names | | | | | | | | | | |
| Candidate Signature | | | | | | | | | | |

| | |
|---------------------|------|
| For Examiner's Use | |
| Examiner's Initials | |
| Question | Mark |
| 1 | |
| 2 | |
| 3 | |
| 4 | |
| 5 | |
| 6 | |
| TOTAL | |



General Certificate of Education
Advanced Subsidiary Examination
January 2013

Chemistry

CHEM1

Unit 1 Foundation Chemistry

Thursday 10 January 2013 9.00 am to 10.15 am

For this paper you must have:

- the Periodic Table/Data Sheet, provided as an insert (enclosed)
- a calculator.

Time allowed

- 1 hour 15 minutes

Instructions

- Use black ink or black ball-point pen.
- Fill in the boxes at the top of this page.
- Answer **all** questions.
- You must answer the questions in the spaces provided. Do not write outside the box around each page or on blank pages.
- All working must be shown.
- Do all rough work in this book. Cross through any work you do not want to be marked.

Information

- The marks for questions are shown in brackets.
- The maximum mark for this paper is 70.
- You are expected to use a calculator, where appropriate.
- The Periodic Table/Data Sheet is provided as an insert.
- Your answers to the questions in **Section B** should be written in continuous prose, where appropriate.
- You will be marked on your ability to:
 - use good English
 - organise information clearly
 - use scientific terminology accurately.

Advice

- You are advised to spend about 50 minutes on **Section A** and about 25 minutes on **Section B**.



J A N 1 3 C H E M 1 0 1

WMP/Jan13/CHEM1

CHEM1

Section A

Answer **all** questions in the spaces provided.

1 (a) State the meaning of the term *mass number* of an isotope.

.....

.....

.....

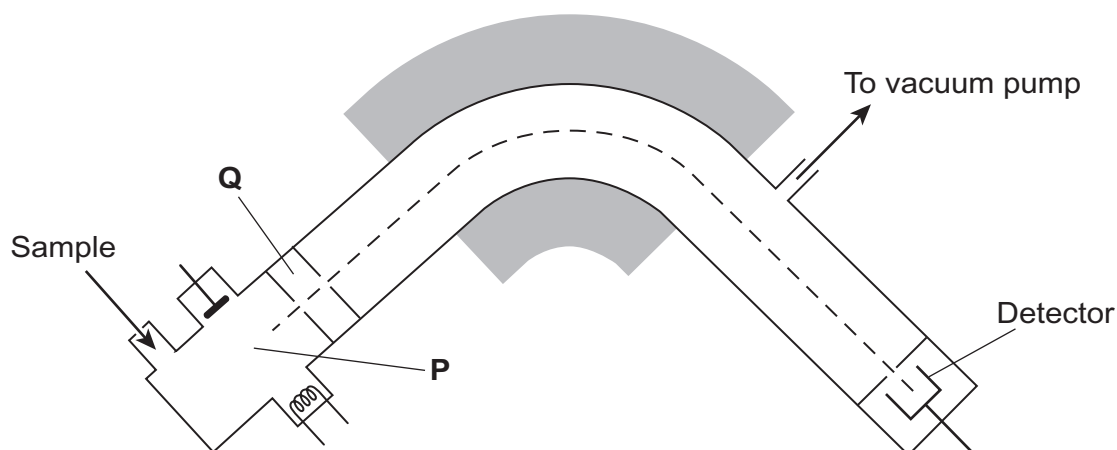
(1 mark)

1 (b) Give the symbol of the element that has an isotope with a mass number of 68 and has 38 neutrons in its nucleus.

.....

(1 mark)

1 (c) The following shows a simplified diagram of a mass spectrometer.



1 (c) (i) State what happens to the sample in the parts labelled **P** and **Q**.

P

Q

(2 marks)



- 1 (c) (ii)** In a mass spectrometer, the isotopes of an element are separated. Two measurements for each isotope are recorded on the mass spectrum.

State the **two** measurements that are recorded for each isotope.

Measurement 1

Measurement 2
(2 marks)

- 1 (d)** A sample of element **R** contains isotopes with mass numbers of 206, 207 and 208 in a 1:1:2 ratio of abundance.

- 1 (d) (i)** Calculate the relative atomic mass of **R**. Give your answer to one decimal place.

.....
.....
.....
.....
.....
.....
(3 marks)

- 1 (d) (ii)** Identify **R**.

.....
(1 mark)

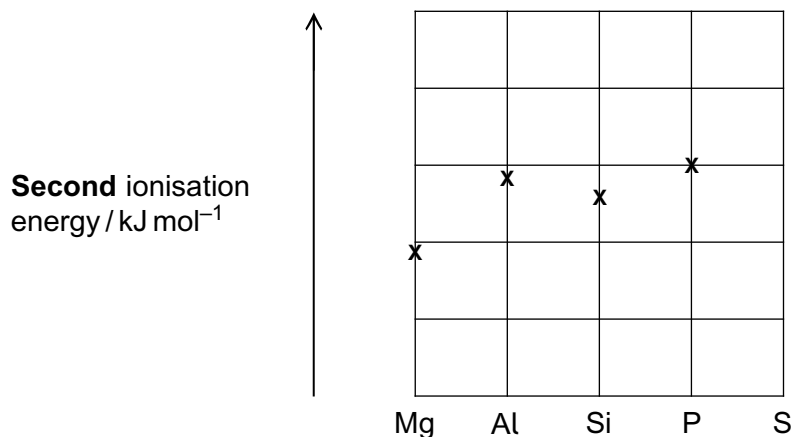
- 1 (d) (iii)** All the isotopes of **R** react in the same way with concentrated nitric acid.

State why isotopes of an element have the same chemical properties.

.....
.....
(1 mark)
(Extra space)



- 2 (a) Use your knowledge of electron configuration and ionisation energies to answer this question.
The following diagram shows the **second** ionisation energies of some Period 3 elements.



- 2 (a) (i) Draw an 'X' on the diagram to show the **second** ionisation energy of sulfur. (1 mark)

- 2 (a) (ii) Write the full electron configuration of the Al^{2+} ion.

..... (1 mark)

- 2 (a) (iii) Write an equation to show the process that occurs when the **second** ionisation energy of aluminium is measured.

..... (1 mark)

- 2 (a) (iv) Give **one** reason why the **second** ionisation energy of silicon is lower than the **second** ionisation energy of aluminium.

.....

 (1 mark)



- 2 (b)** Predict the element in Period 3 that has the highest **second** ionisation energy. Give a reason for your answer.

Element

Reason

.....

.....

(2 marks)

- 2 (c)** The following table gives the successive ionisation energies of an element in Period 3.

| | First | Second | Third | Fourth | Fifth | Sixth |
|--|-------|--------|-------|--------|--------|--------|
| Ionisation energy / kJ mol ⁻¹ | 786 | 1580 | 3230 | 4360 | 16 100 | 19 800 |

Identify this element.

.....

(1 mark)

- 2 (d)** Explain why the ionisation energy of every element is endothermic.

.....

.....

.....

(1 mark)

(Extra space)

.....



- 3** The following table shows the electronegativity values of the elements from lithium to fluorine.

| | | | | | | | |
|-------------------|-----|-----|-----|-----|-----|-----|-----|
| | Li | Be | B | C | N | O | F |
| Electronegativity | 1.0 | 1.5 | 2.0 | 2.5 | 3.0 | 3.5 | 4.0 |

- 3 (a) (i)** State the meaning of the term *electronegativity*.

.....

.....

.....

(2 marks)

(Extra space)

.....

- 3 (a) (ii)** Suggest why the electronegativity of the elements increases from lithium to fluorine.

.....

.....

.....

(2 marks)

(Extra space)

.....

- 3 (b)** State the type of bonding in lithium fluoride.
Explain why a lot of energy is needed to melt a sample of solid lithium fluoride.

Bonding

Explanation

.....

.....

(3 marks)

(Extra space)

.....



3 (c) Deduce why the bonding in nitrogen oxide is covalent rather than ionic.

.....
.....

(1 mark)

(Extra space)

.....

3 (d) Oxygen forms several different compounds with fluorine.

3 (d) (i) Suggest the type of crystal shown by OF_2

.....

(1 mark)

3 (d) (ii) Write an equation to show how OF_2 reacts with steam to form oxygen and hydrogen fluoride.

.....

(1 mark)

3 (d) (iii) One of these compounds of oxygen and fluorine has a relative molecular mass of 70.0 and contains 54.3% by mass of fluorine.

Calculate the empirical formula and the molecular formula of this compound.
Show your working.

Empirical formula

.....

.....

.....

.....

.....

Molecular formula

.....

(4 marks)

| |
|----|
| 14 |
|----|

Turn over ►



- 4 The following table shows the boiling points of some straight-chain alkanes.

| | | | | | |
|--------------------|-----------------|-------------------------------|-------------------------------|--------------------------------|--------------------------------|
| | CH ₄ | C ₂ H ₆ | C ₃ H ₈ | C ₄ H ₁₀ | C ₅ H ₁₂ |
| Boiling point / °C | -162 | -88 | -42 | -1 | 36 |

- 4 (a) State a process used to separate an alkane from a mixture of these alkanes.

.....
(1 mark)

- 4 (b) Both C₃H₈ and C₄H₁₀ can be liquefied and used as fuels for camping stoves.

Suggest, with a reason, which of these two fuels is liquefied more easily.

.....
.....
.....
(1 mark)

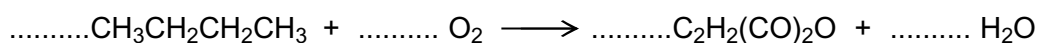
- 4 (c) Write an equation for the complete combustion of C₄H₁₀

.....
(1 mark)

- 4 (d) Explain why the complete combustion of C₄H₁₀ may contribute to environmental problems.

.....
.....
.....
(1 mark)

- 4 (e) Balance the following equation that shows how butane is used to make the compound called maleic anhydride.



(1 mark)



4 (f) Ethanethiol (C_2H_5SH), a compound with an unpleasant smell, is added to gas to enable leaks from gas pipes to be more easily detected.

4 (f) (i) Write an equation for the combustion of ethanethiol to form carbon dioxide, water and sulfur dioxide.

.....
(1 mark)

4 (f) (ii) Identify a compound that is used to react with the sulfur dioxide in the products of combustion before they enter the atmosphere.

Give **one** reason why this compound reacts with sulfur dioxide.

Substance

Reason

.....
(2 marks)

4 (f) (iii) Ethanethiol and ethanol molecules have similar shapes.

Explain why ethanol has the higher boiling point.

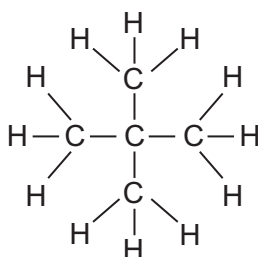
.....
.....
.....
.....
(2 marks)

Question 4 continues on the next page

Turn over ►



- 4 (g) The following compound **X** is an isomer of one of the alkanes in the table on page 8.



- 4 (g) (i) Give the IUPAC name of **X**.

..... (1 mark)

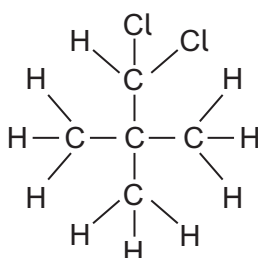
- 4 (g) (ii) **X** has a boiling point of 9.5°C.

Explain why the boiling point of **X** is lower than that of its straight-chain isomer.

.....

 (2 marks)

- 4 (g) (iii) The following compound **Y** is produced when **X** reacts with chlorine.



Deduce how many **other** position isomers of **Y** can be formed.
 Write the number of **other** position isomers in this box.

(1 mark)



4 (h) Cracking of one molecule of an alkane **Z** produces one molecule of ethane, one molecule of propene and two molecules of ethene.

4 (h) (i) Deduce the molecular formula of **Z**.

.....
(1 mark)

4 (h) (ii) State the type of cracking that produces a high proportion of ethene and propene. Give the **two** conditions for this cracking process.

Type of cracking

Conditions

.....
(2 marks)

| |
|----|
| 17 |
|----|

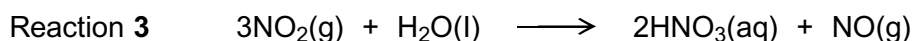
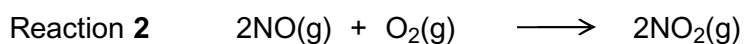
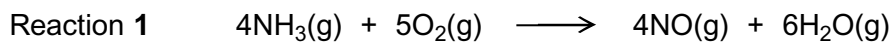
Turn over for the next question

Turn over ►



Section BAnswer **all** questions in the spaces provided.

- 5** Ammonia is used to make nitric acid (HNO_3) by the Ostwald Process. Three reactions occur in this process.



- 5 (a)** In one production run, the gases formed in Reaction 1 occupied a total volume of 4.31 m^3 at 25°C and 100 kPa .

Calculate the amount, in moles, of NO produced.

Give your answer to 3 significant figures.

(The gas constant $R = 8.31 \text{ J K}^{-1} \text{ mol}^{-1}$)

.....

.....

.....

.....

.....

.....

.....

(4 marks)

(Extra space)

.....

.....



5 (b) In another production run, 3.00 kg of ammonia gas were used in Reaction 1 and all of the NO gas produced was used to make NO₂ gas in Reaction 2.

5 (b) (i) Calculate the amount, in moles, of ammonia in 3.00 kg.

.....
.....
.....
.....

(2 marks)

5 (b) (ii) Calculate the mass of NO₂ formed from 3.00 kg of ammonia in Reaction 2 assuming an 80.0% yield.

Give your answer in kilograms.

(If you have been unable to calculate an answer for part (b) (i), you may assume a value of 163 mol. This is **not** the correct answer.)

.....
.....
.....
.....
.....
.....
.....

(3 marks)

(Extra space)

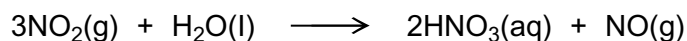
.....
.....

Question 5 continues on the next page

Turn over ►



5 (c) Consider Reaction 3 in this process.



Calculate the concentration of nitric acid produced when 0.543 mol of NO_2 is reacted with water and the solution is made up to 250 cm^3 .

.....

.....

.....

.....

.....

(2 marks)

(Extra space)

.....

5 (d) Suggest why a leak of NO_2 gas from the Ostwald Process will cause atmospheric pollution.

.....

.....

(1 mark)

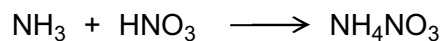
5 (e) Give **one** reason why excess air is used in the Ostwald Process.

.....

.....

(1 mark)

5 (f) Ammonia reacts with nitric acid as shown in this equation.



Deduce the type of reaction occurring.

.....

(1 mark)



- 6** Chlorine can form molecules and ions that contain only chlorine, or that contain chlorine combined with another element.
- 6 (a)** Use your understanding of the electron pair repulsion theory to draw the shape of the AsCl_3 molecule and the shape of the Cl_3^+ ion. Include any lone pairs of electrons that influence the shape.

Name the shape made by the atoms in the AsCl_3 molecule and in the Cl_3^+ ion.

.....
.....
(Extra space) (4 marks)

- 6 (b)** Explain why the AsCl_4^+ ion has a bond angle of 109.5°

.....
.....
.....
.....
(Extra space) (2 marks)

| |
|---|
| 6 |
|---|

END OF QUESTIONS



There are no questions printed on this page

**DO NOT WRITE ON THIS PAGE
ANSWER IN THE SPACES PROVIDED**

