

ADVANCED GCE

BIOLOGY

Mammalian Physiology and Behaviour

INSERT

WEDNESDAY 18 JUNE 2008

2805/05

Afternoon

Time: 1 hour 30 minutes

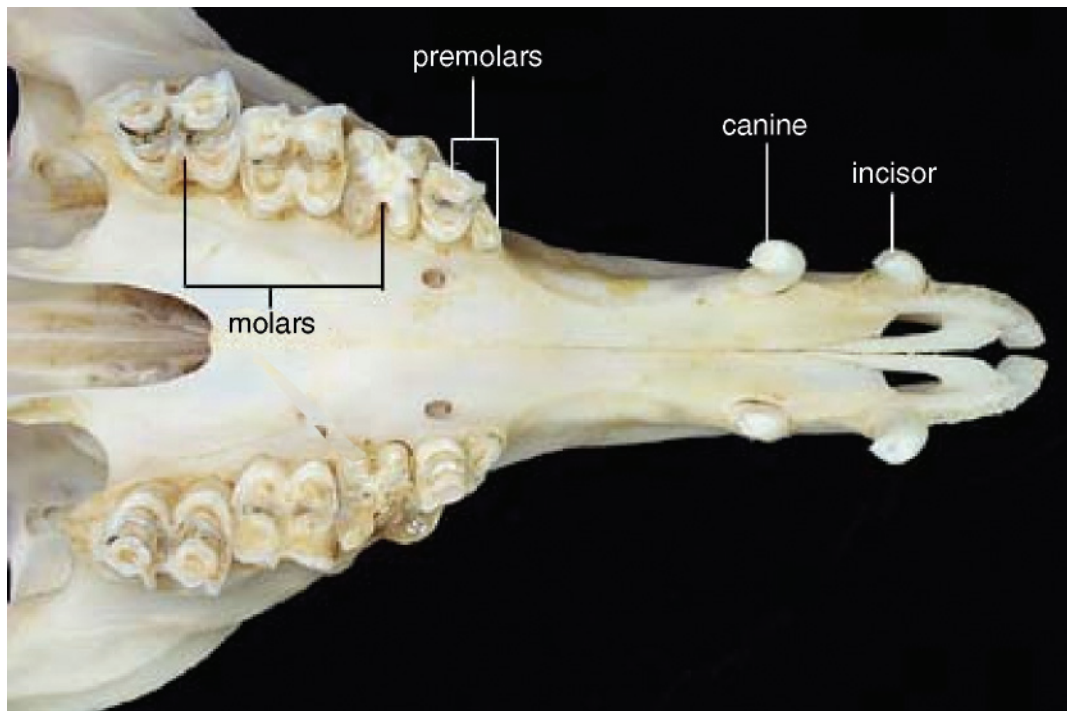
* C U P / T 4 0 0 3 5 *

INSTRUCTIONS TO CANDIDATES

- This insert contains Fig. 2.1.

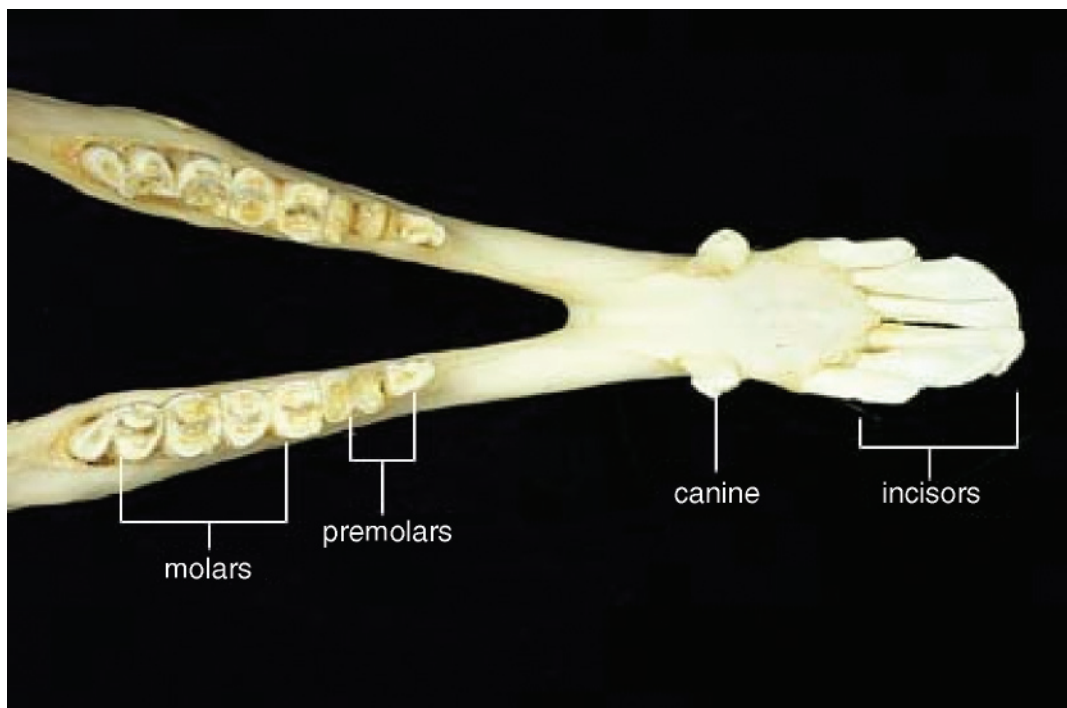
This document consists of **2** printed pages.

upper jaw



© Colorado State University

lower jaw



© Colorado State University

Fig. 2.1*Copyright Acknowledgements:*

Fig. 2.1 (top and bottom)

© Colorado State University, www.colostate.edu. Reproduced by kind permission of Richard Bowen.

Permission to reproduce items where third-party owned material protected by copyright is included has been sought and cleared where possible. Every reasonable effort has been made by the publisher (OCR) to trace copyright holders, but if any items requiring clearance have unwittingly been included, the publisher will be pleased to make amends at the earliest possible opportunity.

OCR is part of the Cambridge Assessment Group. Cambridge Assessment is the brand name of University of Cambridge Local Examinations Syndicate (UCLES), which is itself a department of the University of Cambridge.