

**ADVANCED SUBSIDIARY GCE  
BIOLOGY**

Practical Examination 1 (Part B – Practical Test)

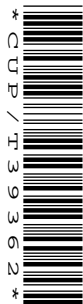
**INSERT**

**TUESDAY 13 MAY 2008**

**2803/03**

Afternoon

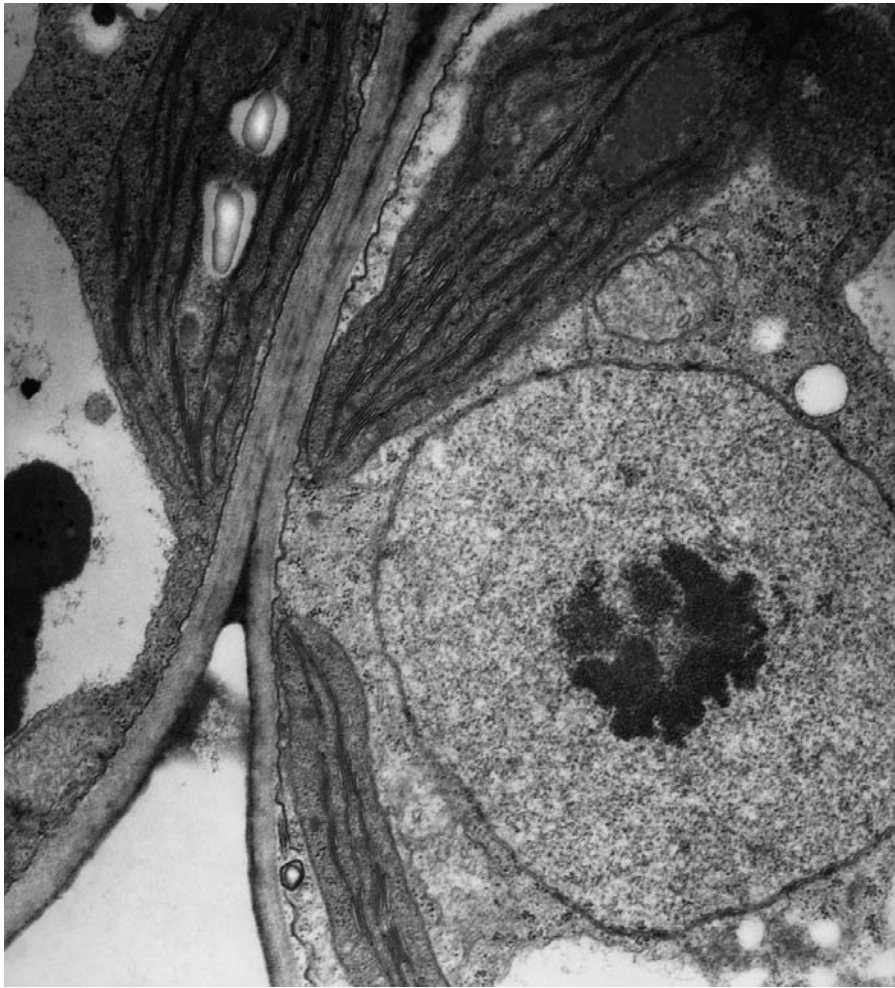
Time: 1 hour 30 minutes



**INSTRUCTIONS TO CANDIDATES**

- This insert contains Fig. 2.1.
- Fig. 2.1 is an electronmicrograph of two neighbouring cells from the spongy mesophyll of a leaf.

This document consists of **2** printed pages.



magnification  $\times 20\,000$

© Marilyn Schaller/Science Photo Library

**Fig. 2.1**

---

*Copyright Acknowledgements:*

Fig. 2.1

© Marilyn Schaller/Science Photo Library

Permission to reproduce items where third-party owned material protected by copyright is included has been sought and cleared where possible. Every reasonable effort has been made by the publisher (OCR) to trace copyright holders, but if any items requiring clearance have unwittingly been included, the publisher will be pleased to make amends at the earliest possible opportunity.

OCR is part of the Cambridge Assessment Group. Cambridge Assessment is the brand name of University of Cambridge Local Examinations Syndicate (UCLES), which is itself a department of the University of Cambridge.