

**ADVANCED SUBSIDIARY GCE  
BIOLOGY**

Human Health and Disease

**INSERT**

**TUESDAY 15 JANUARY 2008**

**2802**

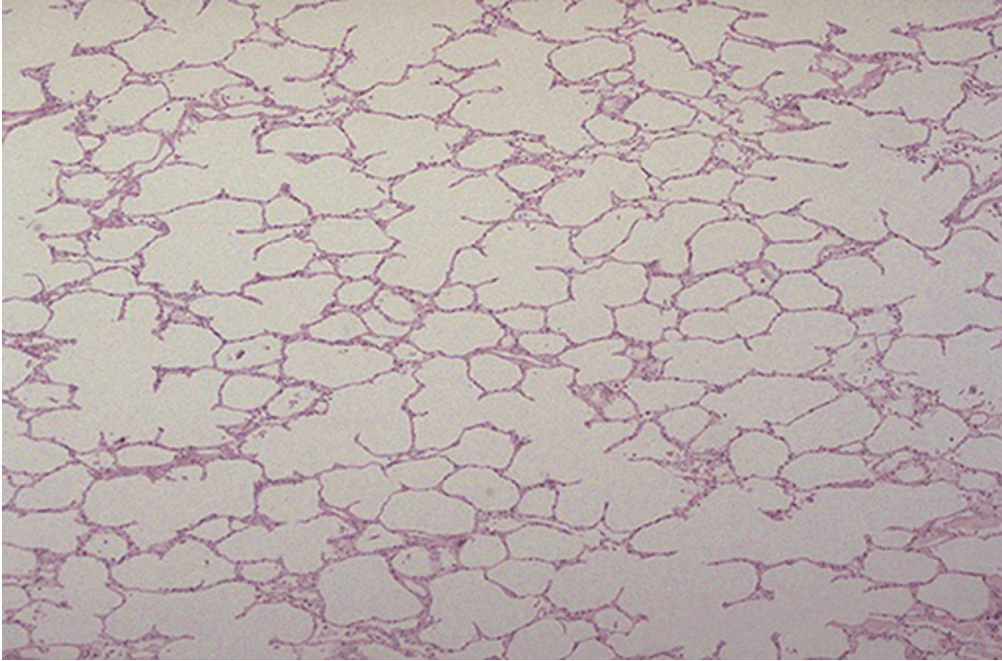
Afternoon  
Time: 1 hour



**INSTRUCTIONS TO CANDIDATES**

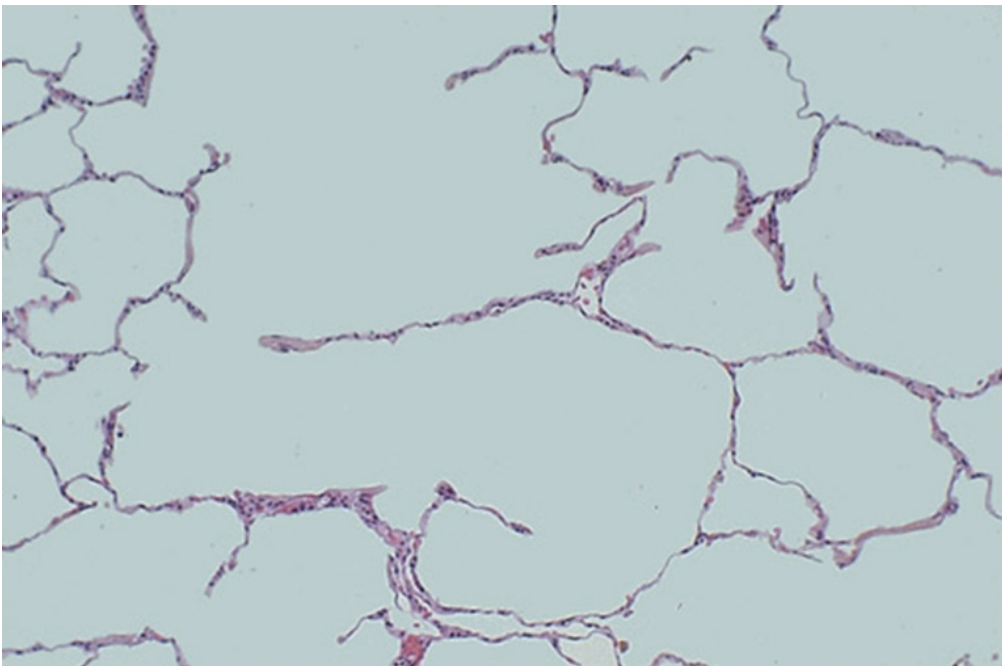
- This insert contains Fig. 4.1 and Fig. 4.2.

This document consists of **2** printed pages.



© Biophoto Associates / Science Photo Library

**Fig. 4.1**



© Biophoto Associates / Science Photo Library

**Fig. 4.2**

---

*Copyright Acknowledgements:*

Fig. 4.1 & 4.2 © Biophoto Associates / Science Photo Library

Permission to reproduce items where third-party owned material protected by copyright is included has been sought and cleared where possible. Every reasonable effort has been made by the publisher (OCR) to trace copyright holders, but if any items requiring clearance have unwittingly been included, the publisher will be pleased to make amends at the earliest possible opportunity.

OCR is part of the Cambridge Assessment Group. Cambridge Assessment is the brand name of University of Cambridge Local Examinations Syndicate (UCLES), which is itself a department of the University of Cambridge.