

Support Materials

AS Art and Design H160-H165

This booklet contains the following support materials:

- Exemplar Material

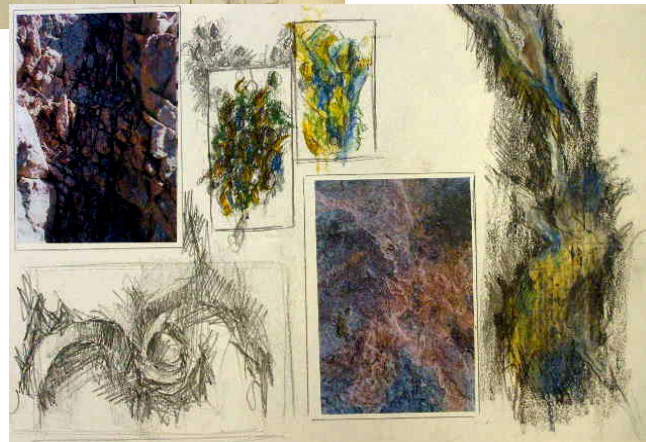
AS Unit 1: Coursework Portfolio

Unit code: F415 / Endorsement: Three-dimensional Design

AO1 29 AO2 28 AO3 17 AO4 20 Total mark: 94

Three vessels

This submission consists of an exploration of natural plant forms through observational studies of various plants and natural surfaces, which can be seen below in pages from the sketchbook. The candidate has made reference to artists such as Blossfeldt, which can be seen on the last page of this example, and the ceramics of J. Tower and C. Casanova, evident below and on the second page. This selection enables the candidate to develop their designs by combining natural shapes, pot silhouette rough and tactile surfaces and striped glaze effects culminate in a set of three vessels (seen on the bottom left of this page). The relationship of the drawing and the exploration of surface through the use of pastels, coloured pencils and inks enable the candidate to maturely explore the visual potential of the subject. The appropriateness of the artists looked at, the range of designs developed, as well as the successful handling of technical ceramic processes, means the candidate is in the top band 6 for three of the Assessment Objectives.



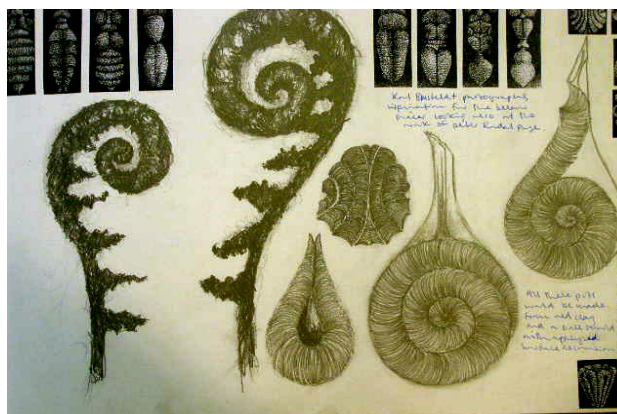
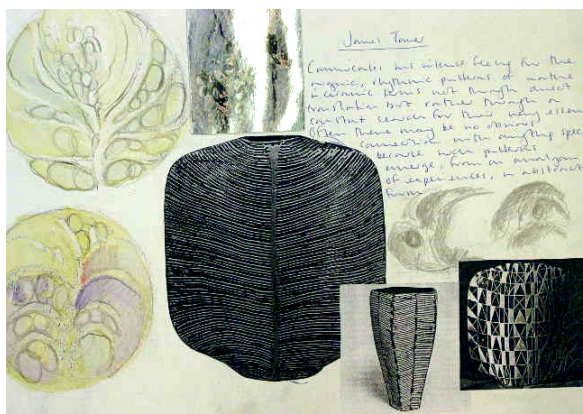
AS Unit 1: Coursework Portfolio *Three vessels*

AO1 (develop) mark: 29 top band 6

The candidate successfully develops their work using a wide range of inventive pencil and drawn designs, which explore vessel shape and form offering a range of possible routes and solutions. The candidate's exploration of surface and tactile qualities, such as stone walls and volcanic types of rock surface, demonstrate a mature understanding and is successfully applied by their use of glaze choice. They convincingly communicate the sources of several of their ideas by perceptively analysing other ceramicist's work such as J. Tower, as well as the sculptural drawings of P.Randall-Page, and the photographs of Blossfeldt, all evident below. Mature understanding of purpose is clear in the relationship of the various elements, such as designs, drawings and artists connections, which all inform each other enabling the candidate to perceptively develop their research towards a mature conclusion.

AO2 (experiment) mark: 28 mid band 6

The candidate achieves a band 6 by exploring different compositional and design aspects to the work, through the use of applying a variety of possible surfaces with different pot forms. Some of these forms fold in on themselves, some are quite thin and elegant, while others are more robust and solidly earthy, capturing a more volcanic surface quality (these can be seen centre below). The candidate also communicates a mature understanding of reviewing and refining ideas through the use of clay and form, in the three different types of vessel produced, as well the use of a range of different (but related) glaze types. The experimentation evident in some of the drawings seen on the next page is also inventive.



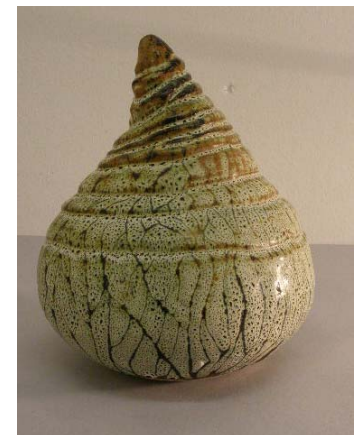
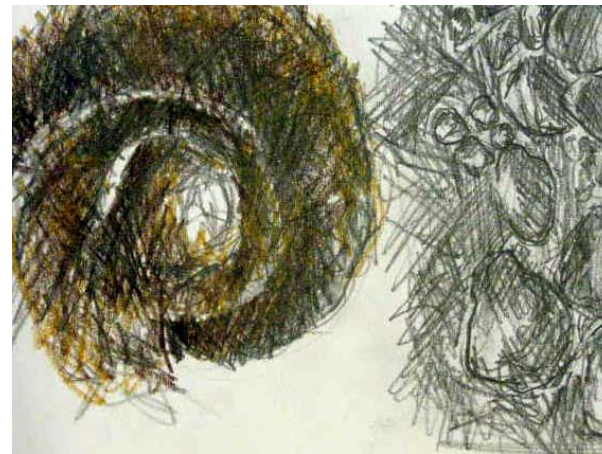
AS Unit 1: Coursework Portfolio *Three vessels*

AO3 (record) **mark: 17** **top band 5**

The candidate's confident well-observed drawings of rocks, walls and fossils, some of which are from life, inform the candidate's exploration of the expressive potential of mark making in both a bold and engaged manner. The candidate also selects and develops through recording the use of the spiral as a natural motif, which is developed as a design element in the final three vessels. The candidate's use of recording informs the design process and enables ideas that are discovered through drawing to be sustained into the final realisation and means that the candidate achieves a band 5 for this objective.

AO4 (present) **mark: 20** **top band 6**

The candidate's fluent and creative use of 2D design skills, visual recording and development of discoveries and ideas allow the work to achieve a band 6 mature conclusion. The three vessels, seen on the bottom right of the page use different but related types of glazes, as well as similar, but again varied, approaches to simplified form and shape. The candidate presents a very well executed and personal set of work perceptively articulating connections to other artists such, as J. Tower, who has used similar approaches to constructing pots and vessels.



AS Unit 1: Coursework Portfolio

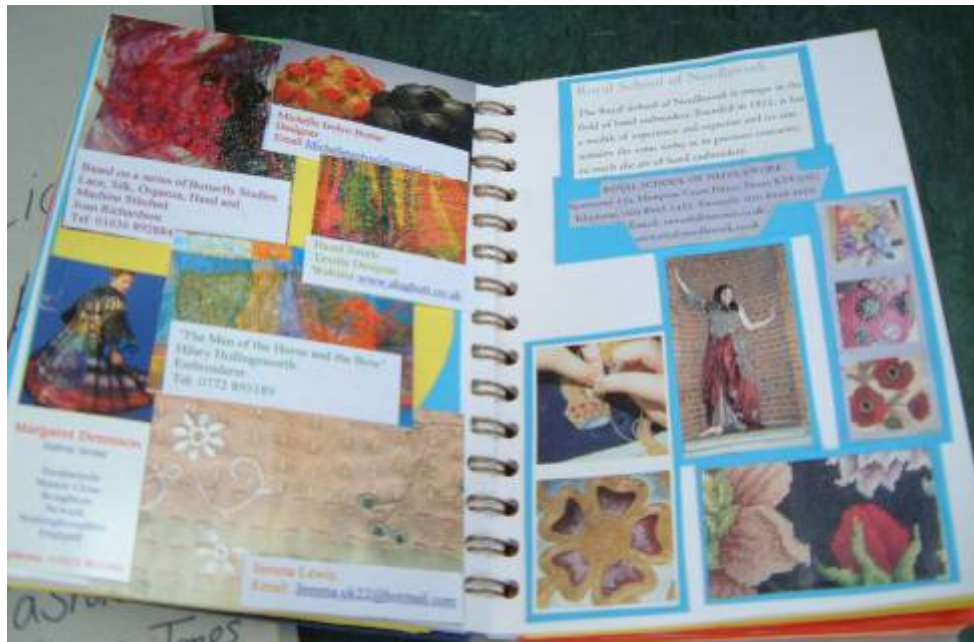
Unit Code: F414 / Endorsement: Textile Design

AO1 24 AO2 26 AO3 16 AO4 17

Total Mark: 83

Flowers and the Sea

This portfolio contains a techniques book and two distinct projects mounted on A1 sheets. The book explores a variety of textile techniques with clear links to the work of other artists. A visit to the Knitting & Stitching Show greatly enhanced this work which explains why AO2 (experiment) is in the highest band (see next page). The first project is influenced by a study of Georgia O'Keeffe, and the second by a visit to Cromer on the North Norfolk coast, where the candidate recorded their observations with photographs. The flower project produced an outcome of a machine stitched appliqué cushion and the sea project a silk painting with machine stitching (see below).



AS Unit 1: Coursework Portfolio *Flowers and the Sea*

AO1 (develop) mark: 24 top band 5

The candidate shows confident development of ideas through sketches, collage and textile samples. There are some detailed photographs taken by the candidate, which are then explored and sustained through various textile techniques. Clear connections to the work of others gives clear and fluid analysis, particularly with Kurt Jackson's *Priest Cove, Cape Cornwall. 5.11.98* in the Sea project and Georgia O'Keefe's *Red Canna* in the flower project.

AO2 (experiment) mark: 26 low band 6

Whilst the 'techniques' book clearly shows some mature experimentation, it is also evident in the two projects. Use of materials, techniques, processes and resources becomes more confident and inventive as the course proceeded. The reviewing and refining of potential ideas is carried on throughout the portfolio in a largely sustained manner.



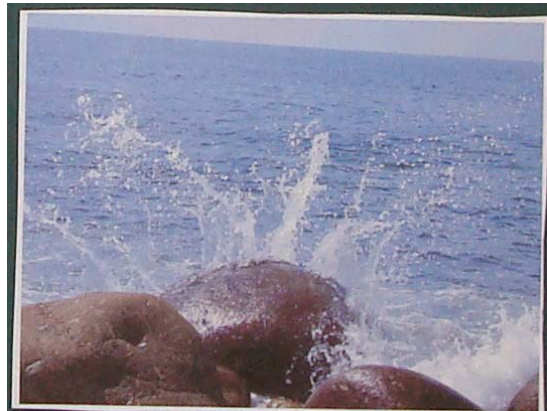
AS Unit 1: Coursework Portfolio *Flowers and the Sea*

AO3 (record) mark: 16 low band 5

Recording from direct observation is largely coherent in the good quality photographs. Ideas and insights demonstrate a growing understanding of intentions, meaning and related contexts, focusing. Appropriate artists have been studied and their influence is clear in the work with largely sustained reflection and evaluation of both these and the candidate's own work.

AO4 (present) mark: 17 top band 5

The candidate's work is confident with relevant understanding of the connections between all elements of the projects. Presentation shows a confident understanding and this is sustained through the candidate's journey. There is a marked improvement in the presentation between the first and second project (see below).



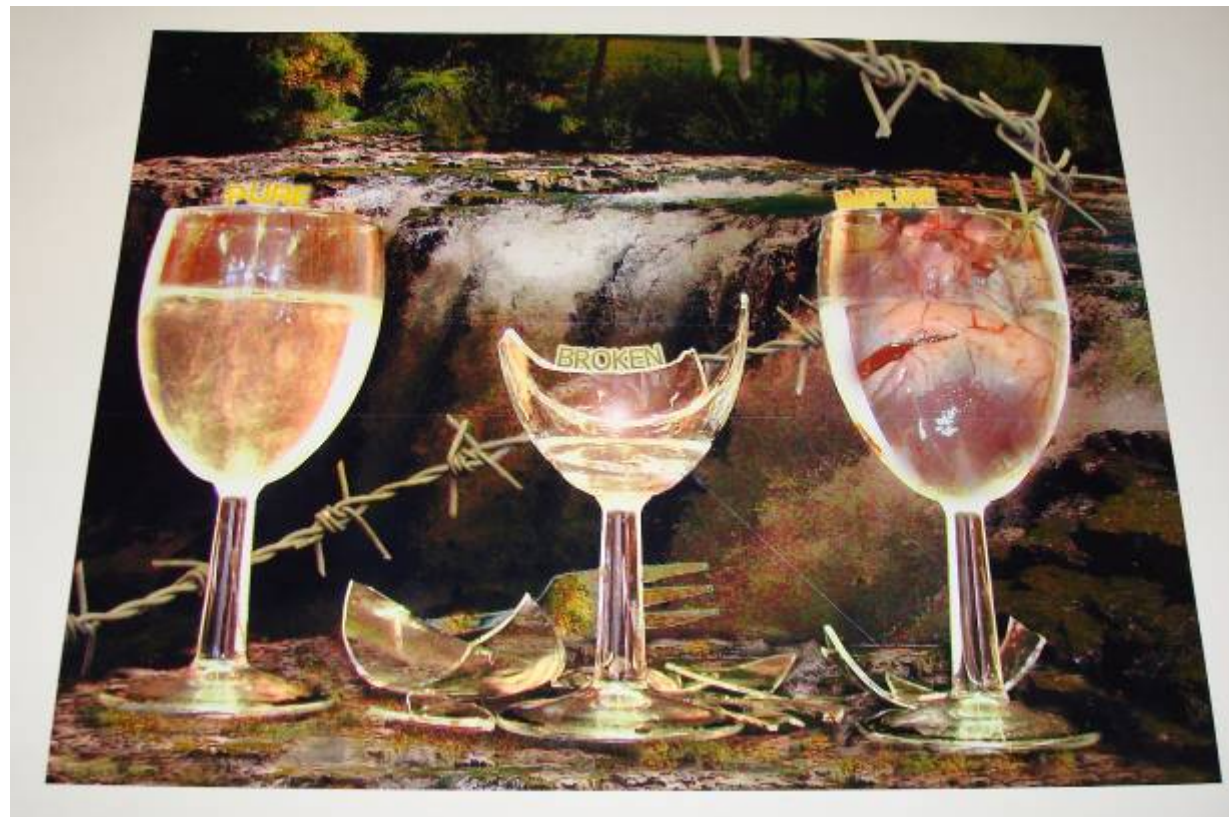
AS Unit 1: Coursework Portfolio

Unit code: F413 / Endorsement: Photography

AO1 22 AO2 22 AO3 16 AO4 16 Total Mark: 76

Digital Distortions

The candidate has worked with digital photography developing skills and understanding throughout the course. Screen shots and written explanations have been used to show clearly that the candidate understands the processes involved. All work is presented in an A3 sketchbook with a folder containing notes. The candidate initially spends time learning how to use the digital camera and then how to use Photoshop effectively. Photographs have been taken on location as well as in the studio. The final piece was a series of photographs showing broken glasses. Work is in band five for all Assessment Objectives reflecting a confident submission.



AS Unit 1: Coursework Portfolio *Digital Distortions*

AO1 (develop) mark: 22 low band 5

There is a clear, coherent and confident development of ideas. These are well annotated throughout, which means that AO1 falls into band 5. The candidate's ability to confidently analyse such sources as, Justin Quinell and Brassai. This is done thoughtfully and they use the inspiration gained from these photographs to distort images.

AO2 (experiment) mark: 22 low band 5

The candidate explores Photoshop techniques, confidently explaining the different stages they has gone through to achieve images. They develop their skills coherently by carrying out a series of experiments with composition and image distortion, showing a sustained understanding of reviewing and refining their ideas.



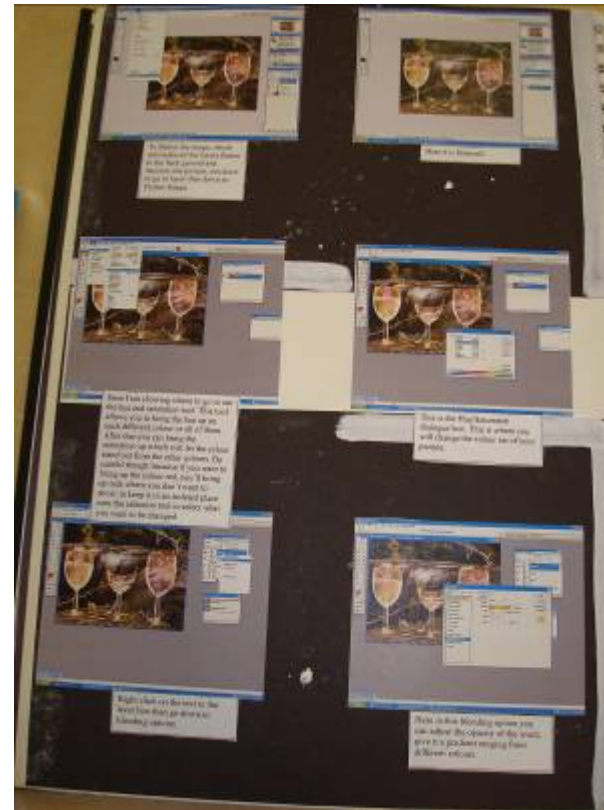
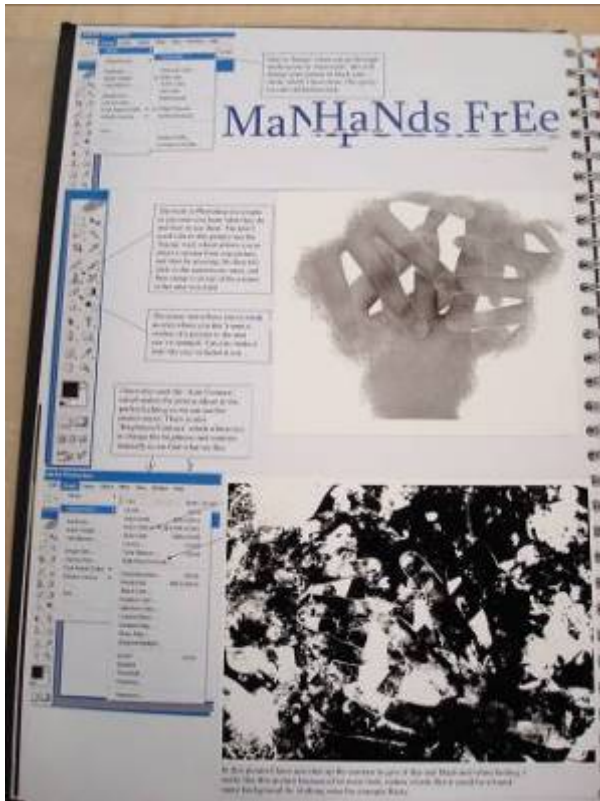
AS Unit 1: Coursework Portfolio Digital Distortions

AO3 (record) mark: 16 mid band 5

Observations, ideas and insights are recorded confidently in both visual and written form. The quality of language is used by the candidate throughout shows a confident ability to reflect on and evaluate their work and progress. The candidate includes a number of screen shots confidently informing their understanding of the use of Photoshop.

AO4 (present) mark: 16 mid band 5

Work confidently demonstrates an informed and sustained understanding of the candidate's journey through to the realisation of intentions. Connections with other photographers are confidently articulated and their influence can be seen in the candidate's work.



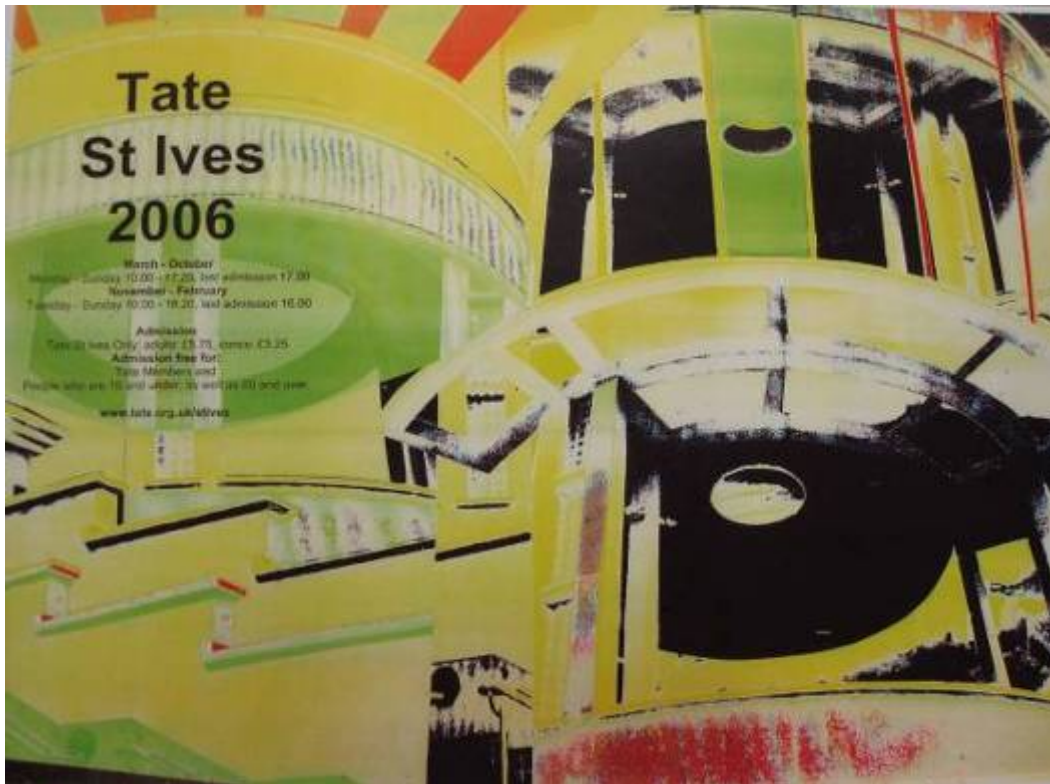
AS Unit 1: Coursework Portfolio

Unit Code: F412 / Endorsement: Graphic Communication

AO1 21 AO2 22 AO3 15 AO4 14 Total Mark: 72

Tate Poster and Mermaid Book Illustration

This portfolio contains two clear projects. One based on typography presented in an A3 folder and culminating in a poster for Tate St Ives. The second is based on book illustration and is presented on A2 sheets. The poster project is the stronger. Both hand rendering and a computer programs, such as Photoshop, are used to develop ideas which all begin with direct observation. The work of other artists informs the candidates work and provides inspiration for the development of ideas. Whilst the work is generally confident, with evidence of sustained investigations, the final pieces lack this confidence.



AS Unit 1: Coursework Portfolio Tate Poster and Mermaid Book Illustration

AO1 (develop) mark: 21 low band 5

The candidate shows a development of ideas, especially in the poster project. There is coherent analysis of a number of leaflets and posters for the Cornwall region demonstrating a detailed and sustained understanding of purposes, meaning and their related contexts. Ideas are also coherently developed from initial sketches of the Tate building. The mermaid project is less developed as it moves quickly from initial photographs, through some digital manipulation, to a hand rendered design.

AO2 (experiment) mark: 22 low band 5

There is plenty of exploration of appropriate materials, including hand rendering and Photoshop, although it is clear that the candidate can use the digital medium to show relevant understanding this is not always annotated very clearly. However, there is enough evidence of experimentation with overlays and the use of colour to make this just confident rather than coherent.



AS Unit 1: Coursework Portfolio Tate Poster and Mermaid Book Illustration

AO3 (record) mark: 15 low band 5

The candidate coherently records from direct observation, producing some confident sketches and good quality photographs. Ideas and intentions are largely confidently organised both visually and in the written information. Presentation is clear with coherent understanding and use of good subject specific language.

AO4 (present) mark: 14 top band 4

Both projects are personal and coherent with a thoughtful realisation of intentions. The candidate's work is coherent with relevant connections between all elements of the projects. The connections between observational work, the work of other artists, and the candidate's own work are all explained using appropriate language.



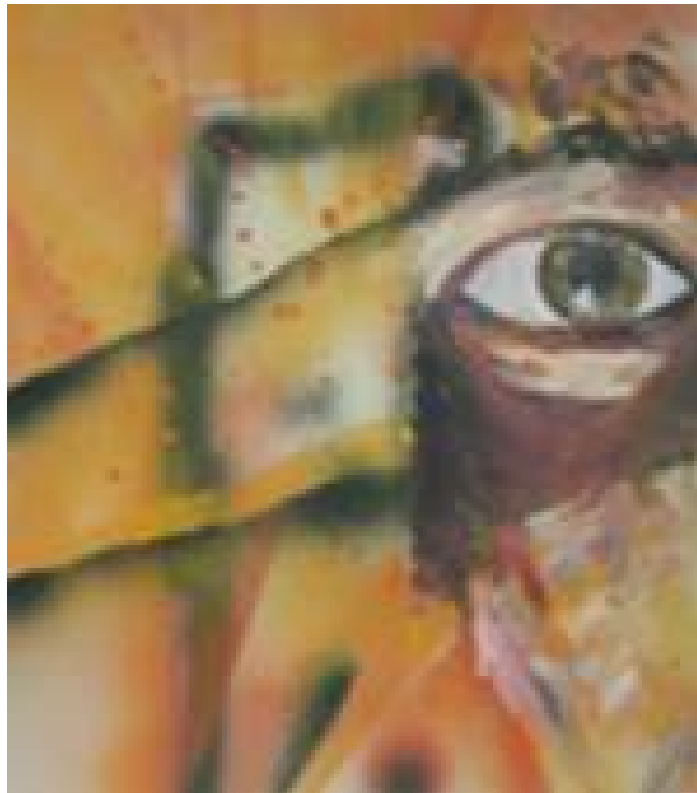
AS Unit 1: Coursework Portfolio

Unit Code: F411 / Endorsement: Fine Art

AO1 17 AO2 19 AO3 14 AO4 13 Total marks: 63

Figures and Spray Portraits

This portfolio is a series of portraits and life drawings that develop, via a number of influences, into a final portrait using formal oil paint and spray paint as well. Life drawings are completed in arrange of media on different size sheets ranging from A3 to A1. The portraiture work is carried out in an A3 sketchbook, from life and the candidate's own photographs. The whole portfolio is coherent with both projects showing the relevant use of materials and the study of appropriate artists, such as Francis Bacon.



AS Unit 1: Coursework Portfolio *Figures and Spray Portraits*

AO1 (develop) mark: 17 low band 4

The work develops coherently through a series of experimental images using light. The work of Francis Bacon is understood and used well to develop the work and shows understanding of purpose and meaning. The quality of language shows growing accuracy through the portfolio with analysis starting to become analytical rather than just descriptive.

AO2 (experiment) mark: 19 top band 4

Experiments in various media are evident and the candidate coherently refines the work as it develops. Primary and secondary sources are used and in addition photography is also used relevantly. The understanding shown in reviewing and refining ideas is coherent and almost confident.



AS Unit 1: Coursework Portfolio *Figures and Spray Portraits*

AO3 (record) mark: 14 top band 4

The candidate shows coherent recording through a series of life drawings which are in a range of media. The work of artists is used to inform recording techniques and demonstrates understanding of intentions and meanings showing clarity in the recording process. All imagery is from a primary source.

AO4 (present) mark: 13 mid band 4

The final painting is largely competent rather than coherent because it is not fully resolved, in both strength of image or technique. However, the connections to the work of other artists, Francis Bacon, clearly informs the painting in a coherent way and this element locates it within band 4..



AS Unit 1: Coursework Portfolio

Unit Code: F411 / Endorsement: Fine Art

AO1 11 AO2 12 AO3 9 AO4 8 Total Mark: 40

Still Life

In this portfolio the candidate has carried out a number of still life studies, particularly based on vessels and shoes. A range of media is used and a variety of artists are studied. The work is competent throughout and is placed in band three for each Assessment Objective.



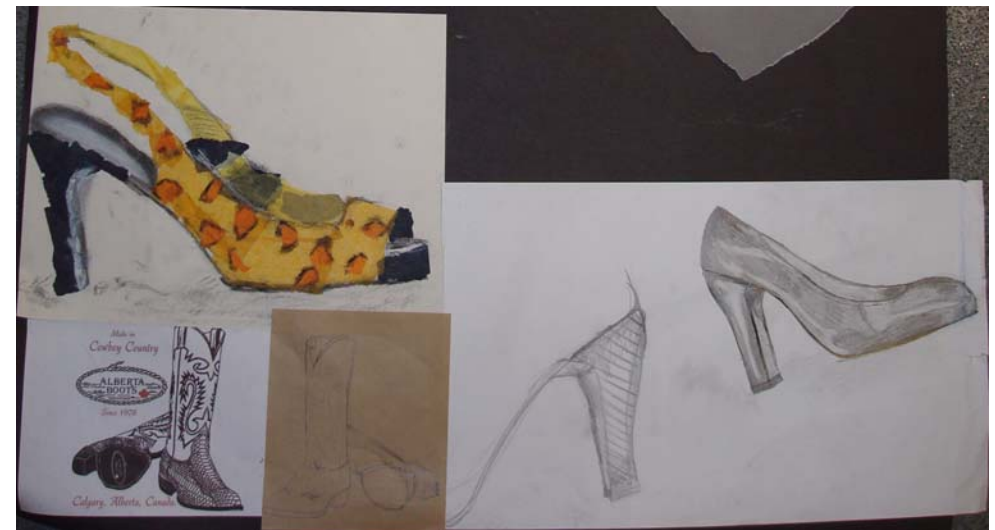
AS Unit 1: Coursework Portfolio Still Life

AO1 (develop) mark: 11 low band 3

The candidate develops ideas from a range of sources with some ability to analyse them and shows some awareness of purpose and meaning. The quality of language is mostly relevant but informs in purely a descriptive form. A brief study of the history of still life shows the candidate's emerging development of ideas.

AO2 (experiment) mark: 12 low band 3

There is a competent exploration in the use of relevant materials with some awareness of reviewing and refining ideas. Artists, such as Allen Jones and Patrick Caulfield, have been studied and this had lead to experiments in composition.



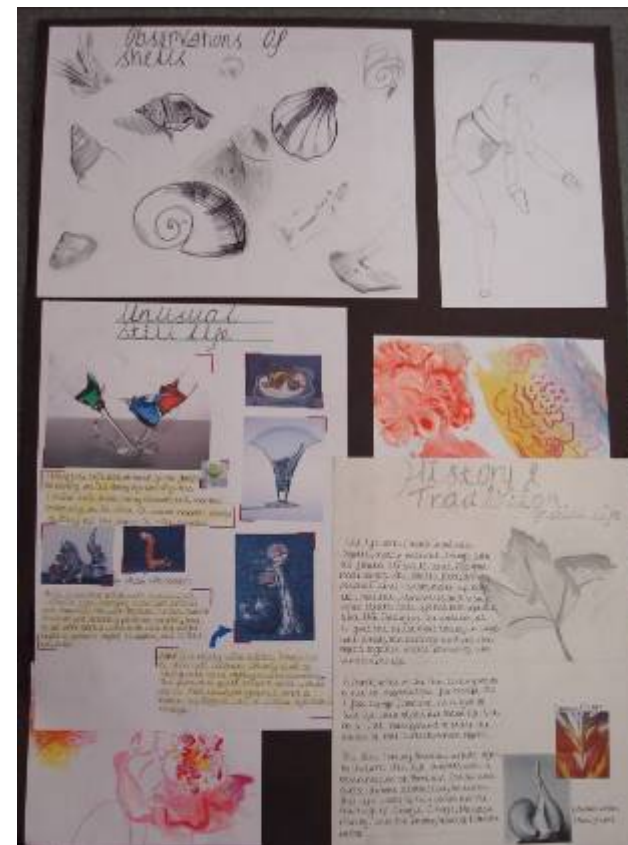
AS Unit 1: Coursework Portfolio Still Life

AO3 (record) mark: 9 low band 3

Observational drawings show a basic recording of ideas and insights. The candidate relates some elements of the observed response to reflect on their work and progress and the annotation throughout shows the candidate's growing understanding of intentions.

AO4 (present) mark: 8 low band 3

The work is presented in an easy to follow basic format. The candidate begins to use appropriate visual language and show an emerging understanding of the connections. The candidate presents a basic personal response and partially realises intentions.



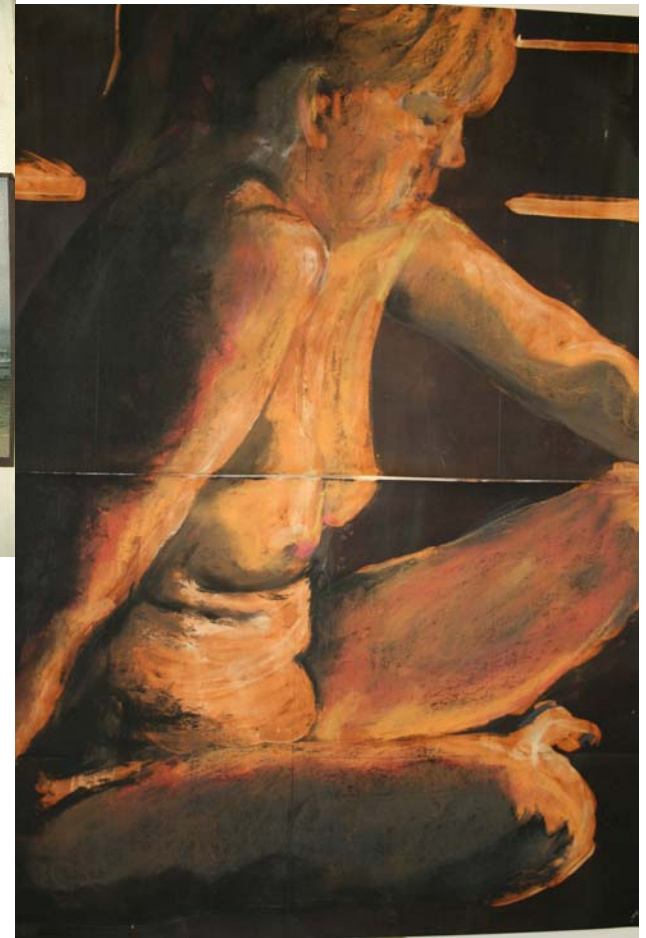
AS Unit 2: Controlled Assignment

Unit code: F421 / Endorsement: Fine Art

AO1 27 AO2 27 AO3 20 AO4 20 Total mark: 94

Female Forms

This submission, of a sketchbook and several large drawings, is centred on the figure. References to Degas and contemporary photographers underpin an inventive use of media. A series of figure studies provides the candidate with strong images for the development of the final piece. The candidate engages with the theme creatively and produces some lively drawings in ink, pastels and paint. In the 5 hour test the candidate produces a large colour figure study. The work is personal and is mature in all Assessment Objectives and meets them at a very high level.



AS Unit 2: Controlled Assignment *Female Forms*

AO1 (develop) mark: 27 low band 6

An extensive set of research into images of women and girls, in both painting and photography, helps to provide a firm starting point for the candidate to develop their own ideas in a creative manner. The professional work is analysed perceptively and mature. The quality of the language, both visual and written, shows a perceptive understanding of purposes, meanings and their related contexts. The performance of the candidate firmly rests in band 6, but not quite at the top end of the band. More original photography would have broadened the approach to the final piece; nevertheless, this is a very strong set of work.

AO2 (experiment) mark: 27 low band 6

The work demonstrates a mature approach. The use of media is inventive and uses a variety of techniques, including, chalks, ink, pastels and bleach. Selection, reviewing and refining of ideas is confident and the candidate has looked at the pastel drawings of Degas, and others, and experimented with some of the techniques and approaches to establish their own response.



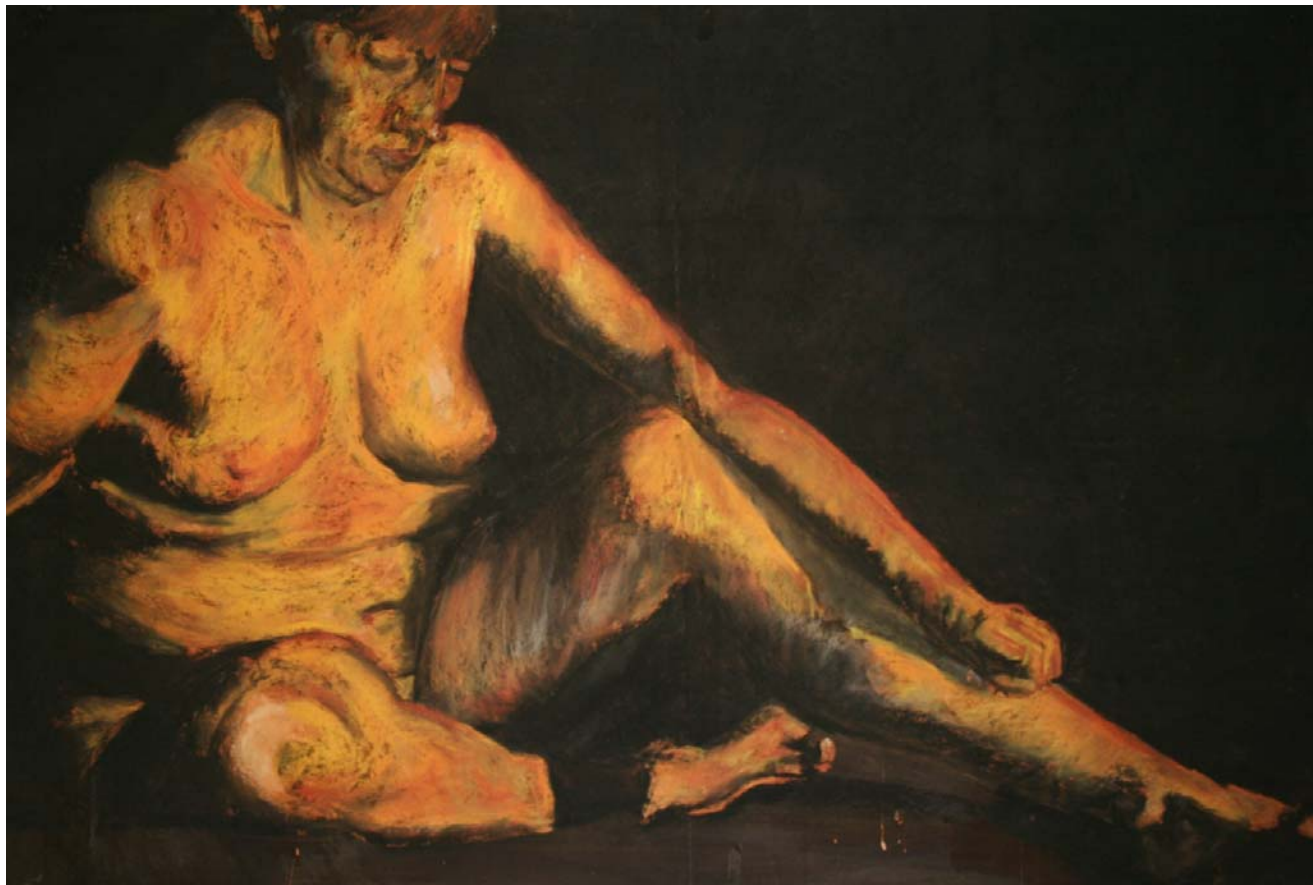
AS Unit 2: Controlled Assignment *Female Forms*

AO3 (record) mark: 20 top band 6

The candidate demonstrates a mature and independent approach to recording and analysis. There are perceptively analysed figure studies which reflect the understanding of the visual language that the candidate possesses. Intentions and meanings are also perceptively demonstrated and demonstrate an ability to excel in this area. The manipulation of materials also reflects considerable achievement.

AO4 (present) mark: 20 top band 6

The submission indicates a fluid and perceptive approach, which clearly articulates connections between the written and the visual elements. The finished work is personal, mature and informed, showing a mature engagement with the subject matter. The personal, creative and perceptive response of this candidate justifies maximum marks.



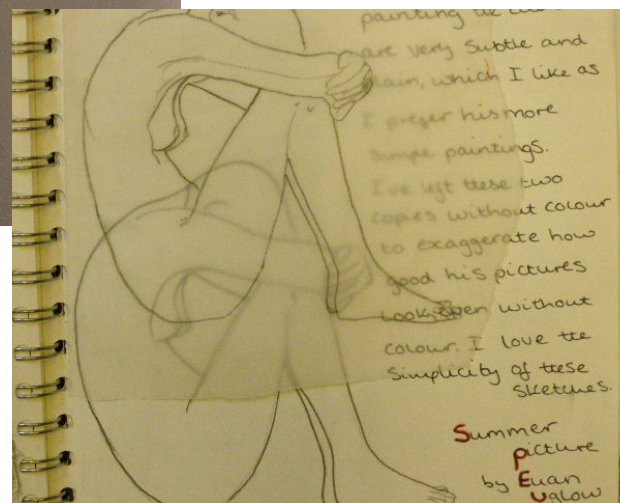
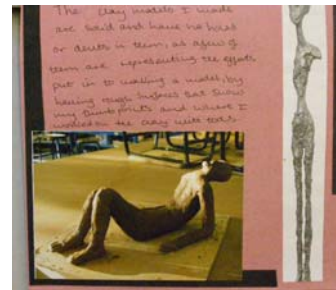
AS Unit 2: Controlled Assignment

Unit code: F425 / Endorsement: Three-dimensional Design

AO1 27 AO2 26 AO3 19 AO4 18 Total mark: 90

Seated Figure

This submission consists of a modelled ceramic study of the figure accompanied by a research sketchbook and several A1 life drawings in chalk. The final five hour response is a detailed figure presented as a piece of fired ceramic and can be seen on the bottom right of this page. The candidate has explored a range of artist, which are mainly sculptors, as a way of informing the exploration of the subject. The artists are reasonably varied including Henry Moore, Giacometti and the figure painter, Euan Uglow. The candidate has started by producing an initial set of life drawings. These are complemented by a couple of ceramic studies of the figure exploring, bending, compression of the limbs and folds of flesh. The work is located in the top band 6 for all four of the Assessment Objectives.



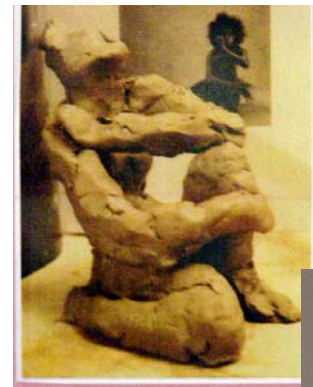
AS Unit 2: Controlled Assignment Seated Figure

AO1 (develop) mark: 26 low band 6

In the series of figure studies the candidate explores the subject confidently through drawing, but also develops their ideas through the medium of clay. The candidate builds on the discoveries that are revealed through the experimentations with the clay. The candidate convincingly develops these insights by combining these with the detailed understanding of anatomical form, revealed through the life drawings. Well-observed studies from the work of Henry Moore (see below) set the work within a context and the candidate demonstrates a detailed and sustained understanding of artists working in similar mediums, both in terms of materials, but also in terms of pose and poise.

AO2 (experiment) mark: 27 low band 6

The candidate inventively explores different compositional aspects to the subject through the use of modelling different poses of the figure in white clay. In one example the candidate looks at the torso in detail, concentrating on surface form, while in another example the investigation of the subject concentrates on an exploration of how the limbs can be folded together. This inventive and well-observed approach convincingly demonstrates how the candidate has maintained a direct focus to their research. The nature of the initial starting point, which is the compressed figure, is also confidently explored through the use of drawing and painting through looking at the work of other artists, such as Euan Uglow - see line drawings on the first page.



AS Unit 2: Controlled Assignment Seated Figure

AO3 (record) mark: 19 mid band 6

The candidate's mature use of well-observed drawings from life, as well as successfully expressive modelling in clay, locates the work again in band 6. The candidate successfully uses two colour chalk, as well as charcoal, to capture and express a dynamic quality to the figure. This approach to drawing allows the candidate to demonstrate, and then develop, a detailed understanding of the figure and a mark making surface. As such these perceptively inform the work and allow the candidate to successfully refine their intentions.

AO4 (present) mark: 18 low band 6

The candidate's confident and detailed use of clay in the final conclusion shows how all the research elements have been used in a mature, informed, and engaged way. The resulting piece is a fluent and articulate study, which captures dramatic anatomical form, as well as exploring the fluid qualities of the medium. The considered pose, and detailed approach to the structure of the figure, all contribute to a sense that the candidate has successfully developed their research into a personal and creative conclusion.



AS Unit 2: Controlled Assignment

Unit code: F424 / Endorsement: Textile Design

AO1 25 AO2 25 AO3 17 AO4 18 Total mark: 85

Gardens

This submission is a very confident piece of work. The candidate has explored the subject of gardens with a lively, creative touch. Photography and drawing have provide some good visual starting points, which have developed, via some interesting experiments with media, to a pleasing design for the 5 hour controlled time employing a variety of textile techniques. The work was informed by research into artists, such as O’Keefe, and personal observations of gardens. The candidate shows control and care with their use of media and the project clearly has the potential to develop further.



AS Unit 2: Controlled Assignment Gardens

AO1 (develop) mark: 25 top band 5

The candidate shows evidence of confident development of ideas, using a set of found and observed images of gardens and plants. This is a well documented assignment with preparation on sheets of card, indicating good control and firm understanding from the candidate in the development of ideas. A number of fine artists and textile artists help to stimulate thinking and lead the way to the final design. A confident and structured use of language helps to clarify the candidate's thinking.

AO2 (experiment) mark: 25 top band 5

Again the candidate shows great confidence in the handling and use of materials. They review and refine ideas in a sustained manner and confidently experiment with embroidery techniques, collage techniques, the use of image maker and quilting. The confident range and strength of the experimentation shows exploration of materials and techniques.



AS Unit 2: Controlled Assignment Gardens

AO3 (record) mark: 17 top band 5

The candidate has produced some delicate and confident drawings of plants, as well as using photography, as a tool of visual recording. An informed and sustained understanding is shown in the use of pencil/colour pencil to record a set of images. The candidate's use of visual language is confident and they conduct the research in a sustained manner with some partially mature aspects.

AO4 (present) mark: 18 low band 6

The candidate has produced a strong mature design. They have made connections between the various strands of research, and make confident connections with professional designers and artists. This is a personal, creative and perceptive presentation with good understanding.



AS Unit 2: Controlled Assignment

Unit code: F423 / Endorsement: Photography

AO1 22 AO2 22 AO3 16 AO4 17 Total mark: 77

Garden Shrubs

This candidate explores the subject of plants and shrubs with a series of colour digital prints. In a series of close ups of plants the shape, texture and colour of flowers are recorded with some skill and confidence. A selection of images from professional photographers helps to inspire the composition and shot selection of the candidate and the final idea develops towards a magazine cover for a journal dedicated to gardening. The cover is produced during the five hour exam. The work is all presented carefully on sheets of card.



AS Unit 2: Controlled Assignment Garden Shrubs

AO1 (develop) mark: 22 low band 5

The candidate investigates the theme by looking at the professional world of garden photography and magazine cover design and by the production of a confident set of recorded images. The style and type of photography demonstrated here suits the nature of the project and shows detailed and sustained understanding on the part of the candidate. A greater range of research could have generated a wider range of ideas which may have resulted in a higher mark. The candidate is both clear and confident in their use of visual and written language.

AO2 (experiment) mark: 22 low band 5

The candidate appears confident with the medium. They produce a series of images that show coherent and appropriate technique. Digital manipulation is also handled with some confident understanding. The project provides evidence of the candidate reviewing and refining their ideas. More experimentation with digital manipulation for example, might have produced a better mark within this band.



AS Unit 2: Controlled Assignment Garden Shrubs

AO3 (record) mark: 16 mid band 5

The shot selection is confident and the choice of imagery supports the direction that the candidate wishes to take the work. Depth of Field controls are used to blur and sharpen the background and so emphasise the subject of the image. The recording skills are confident but further visual enquiries could have produced a more mature result.

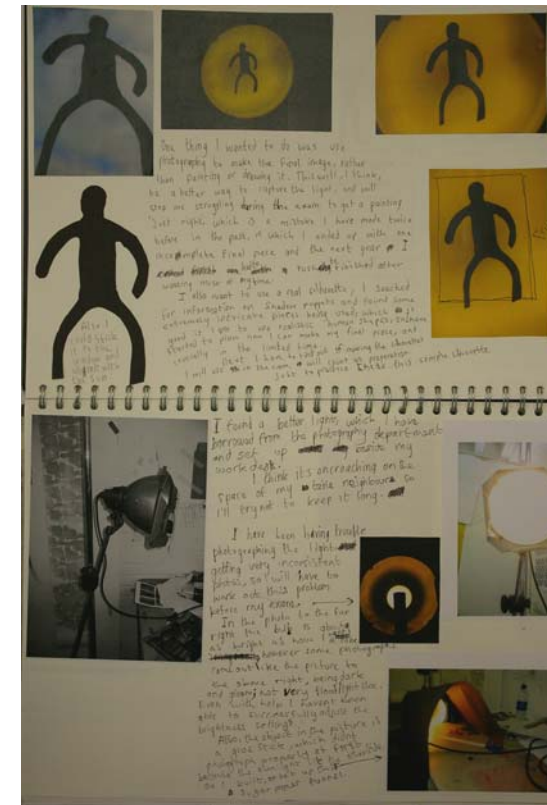
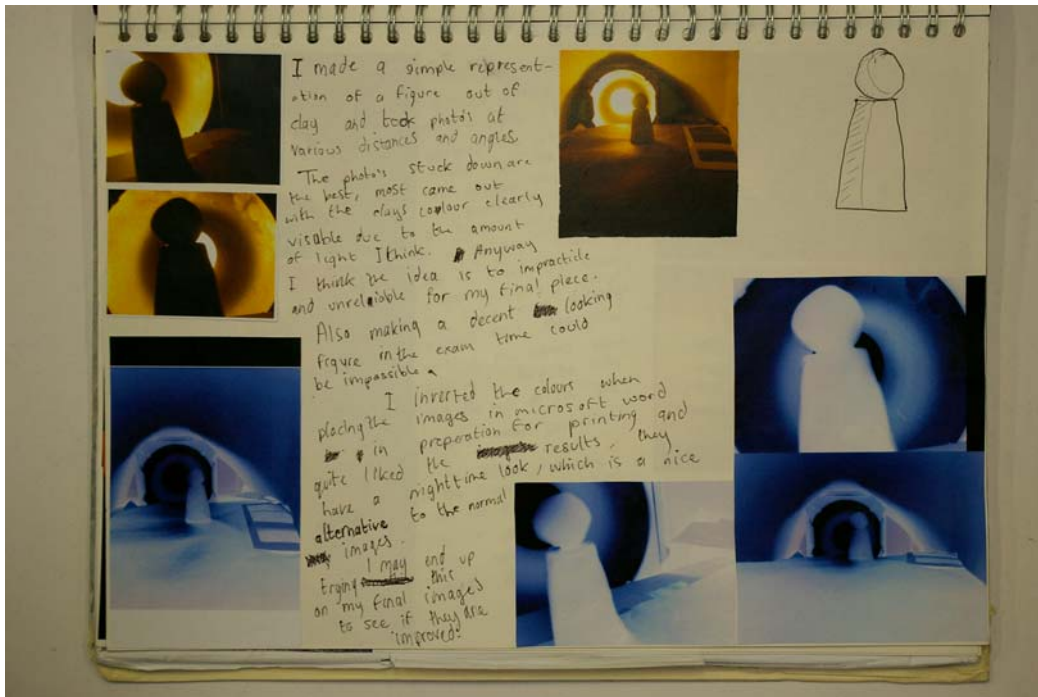
AO4 (present) mark: 17 top band 5

The candidate's intentions are realised confidently into a magazine cover design. The cover design, together with some enlargements of flower photographs, were produced in the 5 hour examination. The submission is a careful, controlled and creative piece of work which confidently shows connections between the visual and other elements in the final piece.



Figures and Lighting

This submission takes its starting point as an investigation into spotlights and floodlights. It develops via an interest in cut outs and models to form a coherent and pleasing project. There are some original and interesting experiments with shape, light and shadow contained in the preparation work. The final design is converted in the 5 hour controlled exam time into a magazine cover. The work shows energy and commitment, but the candidate does struggle with some basic drawing skills. The work is an honest and interesting response to the subject.



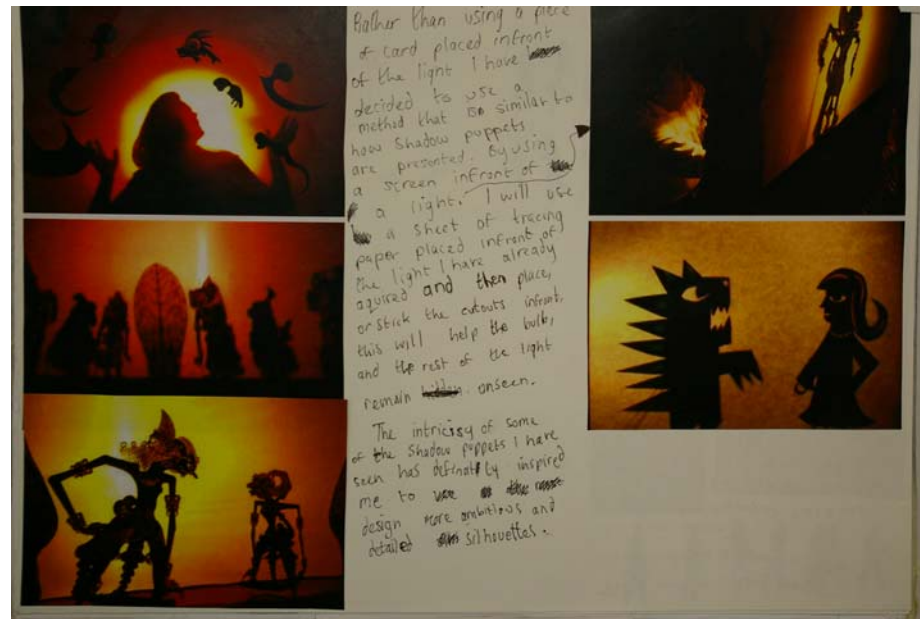
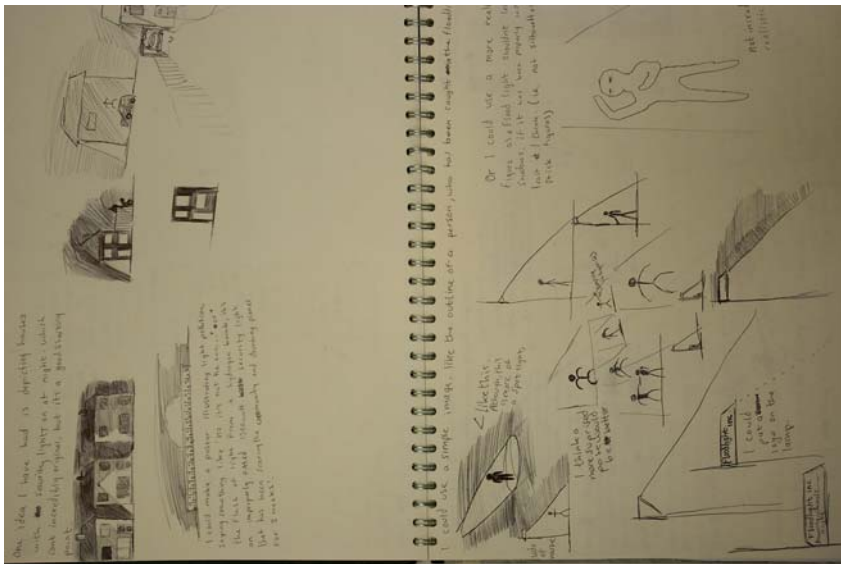
AS Unit 2: Controlled Assignment Figures and Lighting

AO1 (develop) mark: 20 top band 4

The ideas develop in a coherent and thoughtful manner. Photographs of figures caught in security cameras and spotlights provide a starting point. A range of professional images from the world of photography, as well as pictures of shadow puppets, help to coherently develop the central theme. There are some difficulties in both written and visual self expression, but the thinking outlined in the workbooks is purposeful. The ideas generated suggest a confident realisation of intentions, but the quality of the language and analysis prevents it moving beyond band 4.

AO2 (experiment) mark: 20 top band 4

The candidate uses storyboards and computer manipulation to coherently review and refine their ideas. Despite a certain lack of precision, in some of the work, the materials and equipment used do play a part in the exploration of the idea. The work shows coherence and understanding and the candidate is able to review and refine their ideas during the course of the preparation period. A wider range of experiments with shadows could have produced a better result.



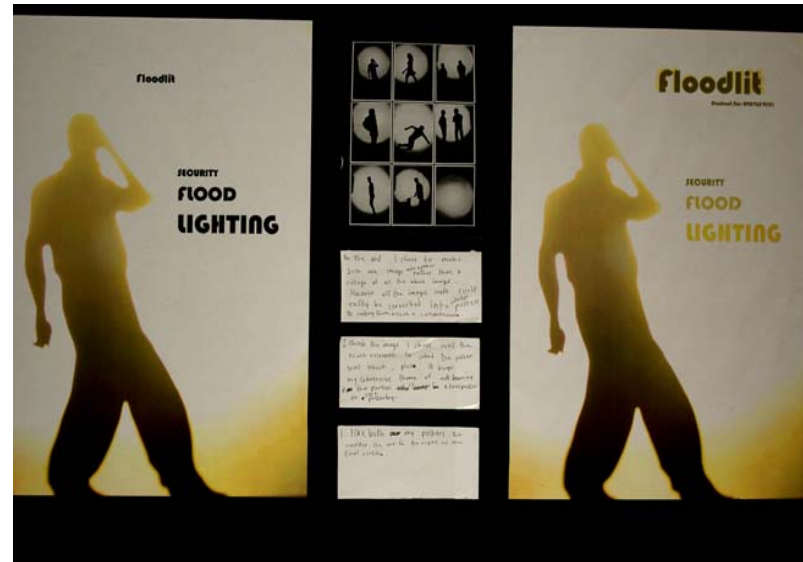
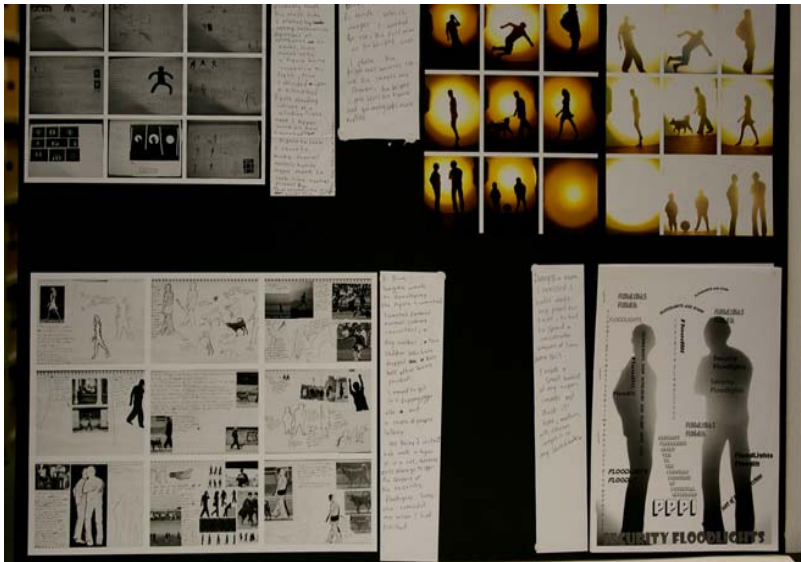
AS Unit 2: Controlled Assignment *Figures and Lighting*

AO3 (record) mark: 14 top band 4

The candidate records ideas with coherence in written, drawn and photographic forms. Whilst the direction of the thinking and subsequent recording shows clarity, the skill with which this is exercised, is not always so coherent. Greater confidence in the use of the camera and working with figures could have resulted in band 5.

AO4 (present) mark: 15 low band 5

The submission is presented in a sketchbook and the overall impression is of a confident and informed realisation of the project. The work is sustained well over the preparatory period and connections were made between the various elements introduced earlier. The controlled time was used to finalise the piece of graphic design. The presentation edged into band 5, but did not demonstrate the confident understanding necessary for a higher mark.



AS Controlled Assignment *Family Photography*

AO3 (record) mark: 12 low band 4

This is the candidate's most successful area. Observations, ideas and insights are largely coherent. Intentions are well understood and demonstrated. The level of performance is just coherent enough to merit a mark in band 4, though the lack of confidence prevents a higher mark.

AO4 (present) mark: 11 top band 3

The candidate realises their intentions in the 5 hour exam time and produced the 3 items below. These items are essentially still-life images. The work is competent and shows a personal response to the chosen starting point. There is an emerging understanding of visual and written connections. Careful selection, from earlier investigations, could have increased the candidate's marks. A more coherent realisation would have meant the work moved into band 4.

