



General Certificate of Education
Advanced Subsidiary Examination
June 2015

Archaeology

ARCH1

Unit 1 The Archaeology of Religion and Ritual

Thursday 14 May 2015 9.00 am to 10.15 am

For this paper you must have:

- an AQA 12-page answer book.

Time allowed

- 1 hour 15 minutes

Instructions

- Use black ink or black ball-point pen. Do **not** use pencil or gel pen.
- Write the information required on the front of your answer book. The **Paper Reference** is ARCH1.
- Answer **six** questions:
 - all **three** questions in Section A
 - **one** question from Section B
 - **two** questions from Section C.
- Do all rough work in your answer book. Cross through any work that you do not want to be marked.

Information

- The marks for questions are shown in brackets.
- The maximum mark for this paper is 60.
- Quality of Written Communication (QWC) will be assessed in this paper.
- You will be marked on your ability to:
 - use good English
 - organise information clearly
 - use specialist vocabulary where appropriate.

Advice

- You are advised to spend about 40 minutes answering Section C.

Section A: The Terminology of Religion and Ritual

Answer **all** the questions from this section.

Your archaeological examples may be drawn from one or more periods.

Question 1

0	1
---	---

Giving **at least one** archaeological example, explain what is meant by ancestor/ancestor cult.

[5 marks]

Question 2

0	2
---	---

Giving **at least one** archaeological example, explain what is meant by priest/ritual specialist.

[5 marks]

Question 3

0	3
---	---

Giving **at least one** archaeological example, explain what is meant by sacrifice.

[5 marks]

Section B: Religion and Ritual of Prescribed Sites

Answer **one** question from this section.

Choose **one** of the following periods and its associated site and use your own knowledge and understanding of this site. You must focus on the religious and ritual aspects of the site that you choose.

Prehistoric Europe 30 000BC to AD43**Question 4**

0	4
---	---

 In the context of religion and ritual, explain the significance of Hochdorf.

[15 marks]

Ancient Egypt 3000BC to 50BC**Question 5**

0	5
---	---

 In the context of religion and ritual, explain the significance of the tomb of Tutankhamun (KV62).

[15 marks]

Roman Europe 753BC to AD410**Question 6**

0	6
---	---

 In the context of religion and ritual, explain the significance of the Roman Lady from Spitalfields Market.

[15 marks]

Turn over for the next section

Turn over ▶

Section C: Religion and Ritual in Cultural Context

Answer any **two** questions, either from the same culture or from two different cultures.

Your answers should reference archaeological sites and evidence.

Prehistoric Europe 30 000BC to AD43

Question 7

0	7
---	---

 Outline the key features that bog bodies have in common. **[15 marks]**

Question 8

0	8
---	---

 Describe the processes and possible purposes of excarnation in the Neolithic period. **[15 marks]**

Question 9

0	9
---	---

 Explain the links between landscape and religion in prehistory. **[15 marks]**

Question 10

1	0
---	---

 Outline possible evidence for symbolism at prehistoric monuments. **[15 marks]**

Ancient Egypt 3000BC to 50BC**Question 11**

1	1
---	---

Outline the archaeological evidence for the nature and purpose of the 'Opet Festival'.

[15 marks]**Question 12**

1	2
---	---

Outline the archaeology of Egyptian temples and what it tells us about how they were used.

[15 marks]**Question 13**

1	3
---	---

Describe the archaeological evidence for the roles of the deities Horus and Seth in Egyptian religion.

[15 marks]**Question 14**

1	4
---	---

Explain the archaeological evidence for the connections between Osiris and the fact that the Egyptians mummified their dead.

[15 marks]**Turn over for the next question****Turn over ►**

Roman Europe 753BC to AD410**Question 15**

1	5
---	---

 Outline the range of evidence for religious ideas in Roman villas. **[15 marks]**

Question 16

1	6
---	---

 What evidence is there for Mithraism in Roman Britain and Europe? **[15 marks]**

Question 17

1	7
---	---

 Explain the archaeological evidence for 'spirit of place'. **[15 marks]**

Question 18

1	8
---	---

 Outline the range of ways in which the dead were treated in Roman styles of burial. **[15 marks]**

END OF QUESTIONS

There are no questions printed on this page

There are no questions printed on this page



General Certificate of Education
Advanced Subsidiary Examination
June 2015

Archaeology

ARCH2

Unit 2 Archaeological Skills and Methods

Sources Booklet

A

Sources for use in answering the questions in Section A

Introduction: Portus, the harbour of Rome

In AD 42, the Emperor Claudius ordered work to begin on the building of an artificial harbour to the north of the mouth of the Tiber, the principal river that ran through Rome. At the beginning of the second century AD, Trajan ordered the enlargement of the harbour and Portus remained the principal port of the City of Rome into the Byzantine period.

Between 1997 and 2004 a collaborative survey project was undertaken between the Soprintendenza per i Beni Archeologici di Ostia, the British School at Rome and the Universities of Southampton, Durham and Cambridge. Excavation followed and has revealed a wealth of information about the site and its development.

Map 1 Map showing the position of Portus in relation to Rome and other important cities in Italy

Glossary

Roma – The Italian name for Rome.



Figure 1 Archaeologist using a Total Station Theodolite to survey and record the site and the surrounding landscape



Figure 2 Aerial photograph of structures beside the River Tiber



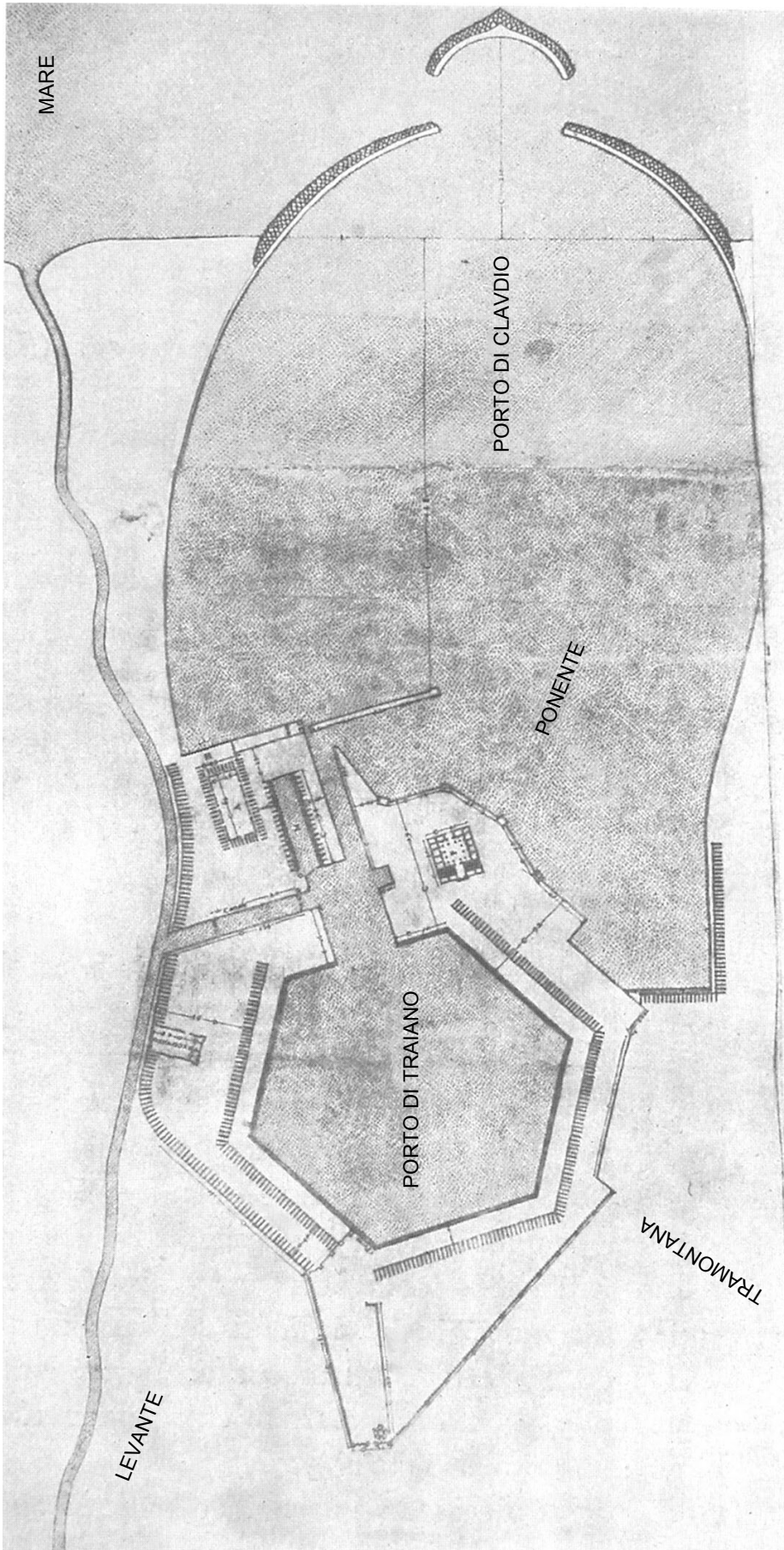
Turn over for the next source

Turn over ►

Figure 3 Diagram showing the distribution of Middle Imperial pottery (c AD 100-300) in the fields around the site



Figure 4 The Ports of Claudius and Trajan by Antonio Labacco (1567)



Glossary

Porto Di Claudio – Port of Claudius
 Porto Di Traiano – Port of Trajan
 Mare – the sea.

Traditional Italianate wind names of medieval origin are commonly marked on old maps such as this:

Tramontana – north wind
 Levante – east wind
 Ponente – west wind.

Turn over for the next source

Turn over ►

Figure 5 View of the Basilica Portuense, a building at Portus, during excavation in 2002 (the photograph shows an area approximately 40m by 25m)



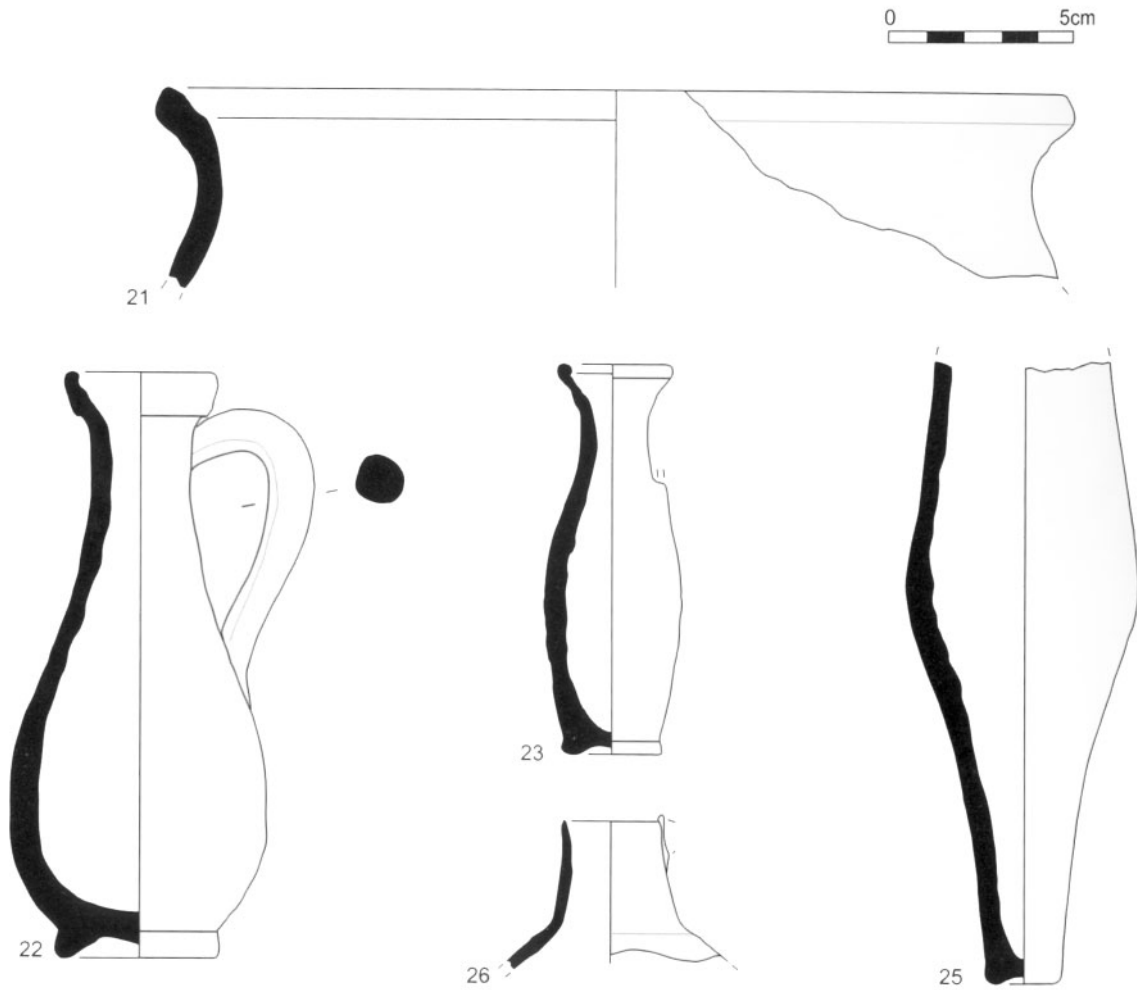
Figure 6 Detail of the south elevation of a warehouse building at Portus under excavation



Figure 7 Saltwater clam recovered from the site (widest point is 3cm)



Figure 8 Illustrations of pottery recovered from the site



END OF SOURCES

There are no sources printed on this page

Acknowledgement of copyright-holders and publishers

Permission to reproduce all copyright material has been applied for. In some cases efforts to contact copyright-holders have been unsuccessful and AQA will be happy to rectify any omissions of acknowledgements in future papers if notified.

Sources:

Map 1 & Figure 8 (adapted), Figures 1, 3 & 4 © S Keay, M Millett, L Paroli & K Strutt, *Portus and Archaeological Survey of the Port of Imperial Rome*, British School at Rome in collaboration with the Ministero per i Beni e le Attività Culturali, Soprintendenza per i Beni Archeologici di Ostia, 2005

Figures 2, 5, 6, 7 © S Keay & L Paroli, *Portus and its hinterland*, British School at Rome in collaboration with the Soprintendenza Speciale per i Beni Archeologici de Roma sede di Ostia, 2011

Copyright © 2015 AQA and its licensors. All rights reserved.



General Certificate of Education
Advanced Subsidiary Examination
June 2015

Archaeology

ARCH2

Unit 2 Archaeological Skills and Methods

Monday 18 May 2015 1.30 pm to 3.15 pm

For this paper you must have:

- an AQA 12-page answer book
- a Sources Booklet (enclosed).

Time allowed

- 1 hour 45 minutes

Instructions

- Use black ink or black ball-point pen.
- Write the information required on the front of your answer book. The **Paper Reference** is ARCH2.
- Answer **nine** questions:
 - answer **all** of the questions in Section A
 - answer **one** question from Section B.
- Do all rough work in your answer book. Cross through any work that you do not want to be marked.

Information

- The maximum mark for this paper is 90.
- The marks for questions are shown in brackets.
- Sources for use in answering the questions in Section A are printed in a separate Sources Booklet.
- In answering the questions in Section A, you must clearly demonstrate that you have used or drawn upon all the sources to which you are specifically directed. You must also use your own knowledge and understanding as appropriate to each question.
- You may use a magnifying glass to assist interpretation of figures.
- Quality of Written Communication (QWC) will be assessed in Section B of this paper.
- You will be marked on your ability to:
 - use good English
 - organise information clearly
 - use specialist vocabulary where appropriate.

Section A

Read the introduction and study the figures in the Sources Booklet.

In each question you must clearly demonstrate that you have used or drawn upon the figures you are specifically directed to.

Answer **all** the questions in this section.

Question 1

0	1
---	---

 Study **Figure 1** and use your own knowledge.

Explain the different ways archaeologists could undertake a landscape survey.

[9 marks]

Question 2

0	2
---	---

 Study **Figure 2** and use your own knowledge.

Explain why the remains in **Figure 2** were visible to archaeologists.

[6 marks]

Question 3

0	3
---	---

 Study **Figure 3** and use your own knowledge.

Explain the procedures that archaeologists would have used to produce this distribution plot of Middle Imperial pottery.

[9 marks]

Question 4

0	4
---	---

 Study **Figure 4** and use your own knowledge.

Outline **both** the uses and limitations of antiquarian sources such as Antonio Labacco's map for archaeologists.

[6 marks]

Question 5

0	5
---	---

 Study **Figure 5** and use your own knowledge.

Outline **both** the advantages and disadvantages of the excavation method shown.

[8 marks]

Question 6

0 6 Study **Figure 6** and use your own knowledge.

Explain how archaeologists could record the archaeology shown.

[12 marks]

Question 7

0 7 Study **Figure 7** and use your own knowledge.

What can archaeologists learn from remains such as this?

[4 marks]

Question 8

0 8 Study **Figure 8** and use your own knowledge.

Explain why archaeologists have drawn the pottery artefacts in this way.

[6 marks]

Turn over for the next section

Turn over ▶

Section B

Answer **one** question from this section.

You must use case studies, which may include Portus if appropriate, to illustrate your answer.

Question 9

0	9
---	---

Outline the relative dating methods archaeologists could use to date a site.

[30 marks]

Question 10

1	0
---	---

Outline the information that archaeologists could discover from the study of macro floral **and** macro faunal evidence.

[30 marks]

Question 11

1	1
---	---

Outline the information archaeologists could find out by using ethnographic techniques to study the past.

[30 marks]

END OF QUESTIONS



General Certificate of Education
Advanced Level Examination
June 2015

Archaeology

ARCH3

Unit 3 World Archaeology

Thursday 18 June 2015 1.30 pm to 3.30 pm

For this paper you must have:

- an AQA 12-page answer book.

Time allowed

- 2 hours

Instructions

- Use black ink or black ball-point pen.
- Write the information required on the front of your answer book. The **Paper Reference** is ARCH3.
- Answer **three** questions:
 - **two** questions from **Section A**, each from a different theme
 - **one** question from **Section B**.
- Do all rough work in your answer book. Cross through any work that you do not want to be marked.

Information

- The marks for questions are shown in brackets.
- The maximum mark for this paper is 90.
- Quality of Written Communication (QWC) will be assessed in this paper.
You will be marked on your ability to:
 - use good English
 - organise information clearly
 - use specialist vocabulary where appropriate.

Section A: Themes in World Archaeology

Answer **two** questions from this section, each from a different theme.

Use case studies to explain your answers and support your arguments.

Theme 1: People and Society in the Past

Question 1

0	1
---	---

 To what extent were family units in the past comprised of only parents and children?
[30 marks]

Question 2

0	2
---	---

 What physical evidence is of most value to archaeologists in explaining the emergence of ranked societies?
[30 marks]

Question 3

0	3
---	---

 Were human or environmental factors more significant in the decline **and/or** collapse of past (modern human) societies?
Explain your answer.
[30 marks]

Theme 2: Sites and People in the Landscape

Question 4

0	4
---	---

 Discuss the evidence for seasonal exploitation of the landscape in **at least two** different cultures you have studied.
[30 marks]

Question 5

0	5
---	---

 Evaluate the contribution of particular experimental buildings to our understanding of settlements in the past.
[30 marks]

Question 6

0	6
---	---

 To what extent have archaeologists explained the emergence of **either** sedentism **or** urban settlements in **at least two** societies you have studied?
[30 marks]

Theme 3: Economics and Material Culture**Question 7**

0	7
---	---

To what extent does archaeological evidence support the view that hunter-gatherers had successful, productive economies?

[30 marks]**Question 8**

0	8
---	---

'Most tools and technologies in the past were made from organic materials.'

Discuss.

[30 marks]**Question 9**

0	9
---	---

Were domestic animals of greater economic value dead or alive in past societies?

Explain your answer.

[30 marks]

Turn over for the next section

Turn over ▶

Section B: Contemporary Issues in World Archaeology

Answer **one** question from this section.

You should explain your answer using case studies to support your argument.

Question 10

1	0
---	---

In the 21st century, the public value of Archaeology is described in terms of 'Heritage Assets'.

What kind of an asset are archaeological remains in the United Kingdom?

[30 marks]

Question 11

1	1
---	---

'Today collectors are the real looters, not metal-detectorists.'

Discuss.

[30 marks]

Question 12

1	2
---	---

'Archaeology still has a role in the construction of national identity by modern nation states.'

Discuss.

[30 marks]

Question 13

1	3
---	---

Discuss why archaeologists disagree about the reasons for Neanderthal extinction.

[30 marks]

END OF QUESTIONS