



General Certificate of Education
Advanced Subsidiary Examination
June 2013

Archaeology

ARCH2

Unit 2 Archaeological Skills and Methods

Sources Booklet

Sources for use in answering questions in Section A.

A

Sources for use in answering the questions in Section A

Introduction: The Swan

The Swan was a small warship, built for Charles I. She fell into the hands of the Parliamentary forces during the Civil Wars and was wrecked during an attack on Duart Castle in 1653. Duart Castle is on the Isle of Mull, on the west coast of Scotland. The ship itself lies in 10-12 metres of water, at the bottom of a rock face which slopes from the shore.

The site was discovered when several heavily concreted iron cannons were found on the sea bed. The site is being eroded, so survey and limited excavation have been carried out with a team led by Dr Colin Martin of St Andrews University. Since 1992, the site has been protected as an historic shipwreck site by Historic Scotland.

Glossary

Concreted – a hard mass of corrosion formed around some types of metals when they are in seawater.

Figure 1: Duart Castle on the Isle of Mull.



Map 1: Map showing the location of the Isle of Mull.



Turn over for the next source

Turn over ▶

Figure 2: Researcher using a variety of documentary sources to investigate the Swan.



Figure 3: Diver removing sediment from the wreck of the Swan.



Figure 4(a): Human remains on the wreck of the Swan showing part of a pelvis and femur.



Figure 4(b): Human remains from the Swan during study in the laboratory. Remains include a pelvis, jaw, ribs, vertebrae and some long bones.



Turn over ►

Figure 5(a): Photograph of the carving of the Scottish thistle from the wreck of the Swan (scale shows centimetre intervals).



Figure 5(b): Photograph of the carving of the harp of Ireland from the wreck of the Swan (scale shows centimetre intervals).



Figure 5(c): Drawing of the carvings in 5(a) and (b).

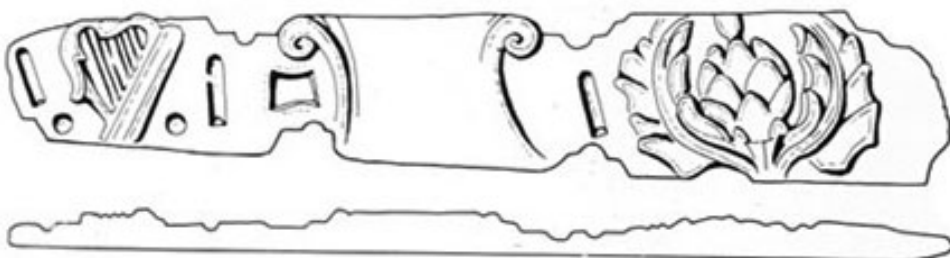


Figure 6: Birch branch and oak leaf used as packing material for provisions on the Swan (scale shows centimetre intervals).



Turn over for the next source

Turn over ▶

Figure 7(a): Lump of heavily concreted metal before conservation (scale shows centimetre intervals).



Figure 7(b): Concreted lump from figure 7(a) after conservation. Gold and silver wire has been wound around an iron bar to form the hilt of a sword.



Figure 8: Partially uncovered and barnacle-encrusted wooden carving from the Swan.



END OF SOURCES

There are no sources printed on this page

There are no sources printed on this page

There are no sources printed on this page

ACKNOWLEDGEMENT OF COPYRIGHT-HOLDERS AND PUBLISHERS

Permission to reproduce all copyright material has been applied for. In some cases efforts to contact copyright-holders have been unsuccessful and AQA will be happy to rectify any omissions of acknowledgements in future papers if notified.

All Figures © Colin Martin.

Copyright © 2013 AQA and its licensors. All rights reserved.