



General Certificate of Education
Advanced Subsidiary Examination
June 2011

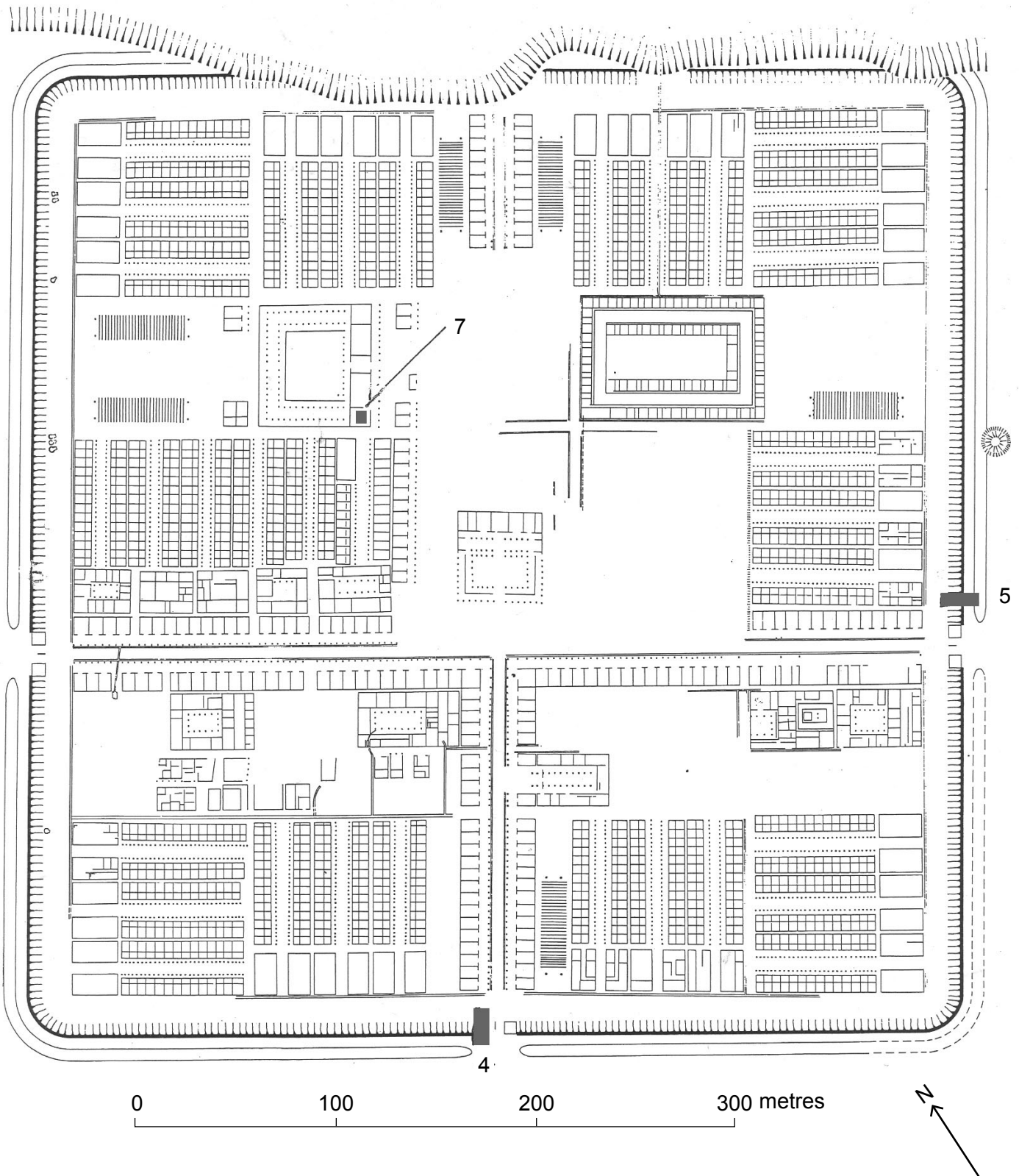
Archaeology

ARCH2

Unit 2 Archaeological Skills and Methods

Sources Booklet

Figure 1 Plan of Inchtuthil drawn using evidence from aerial photographs, the excavations and comparative data from other Roman military sites. The approximate locations of **Figures 4, 5 and 7** are indicated.



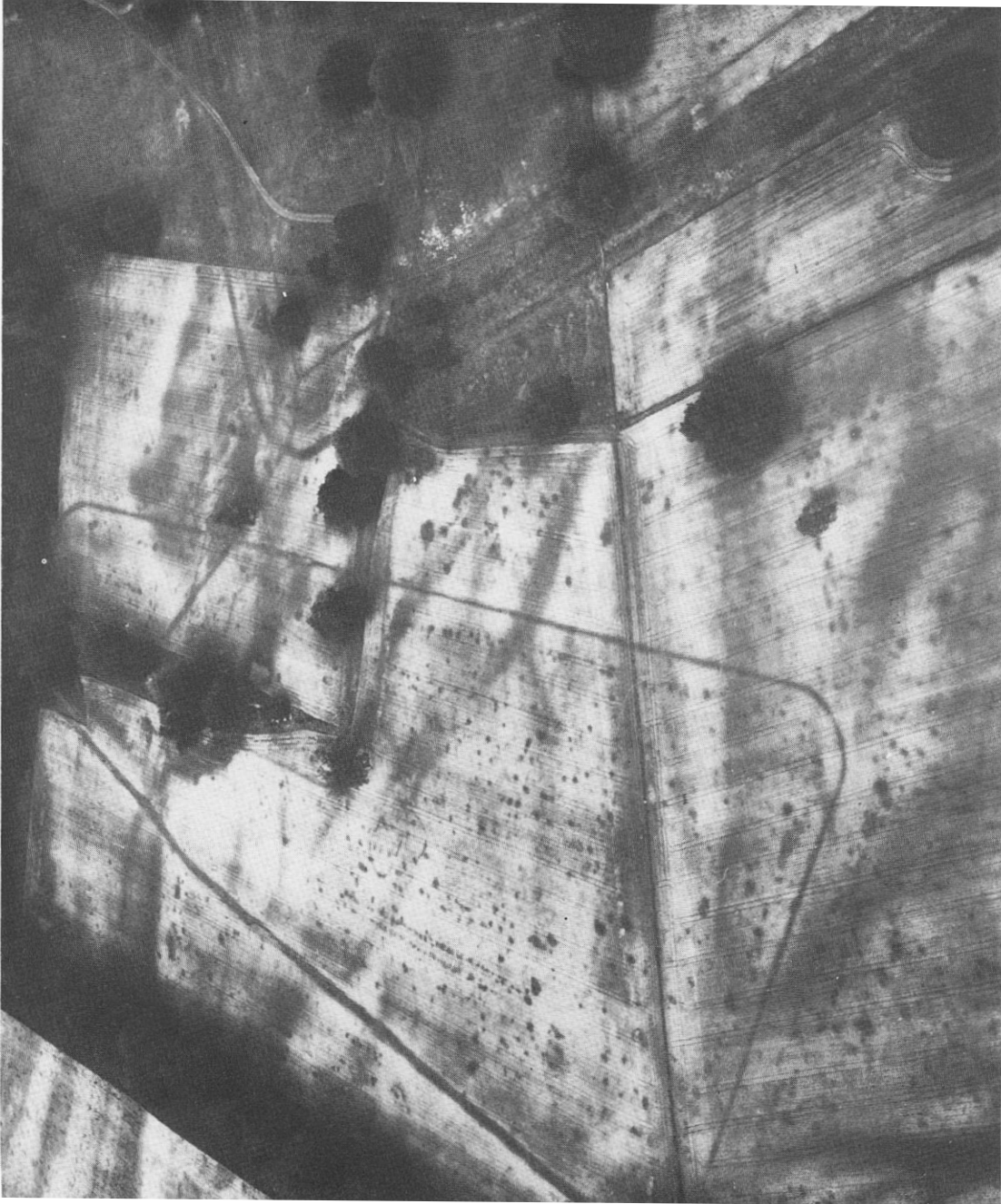
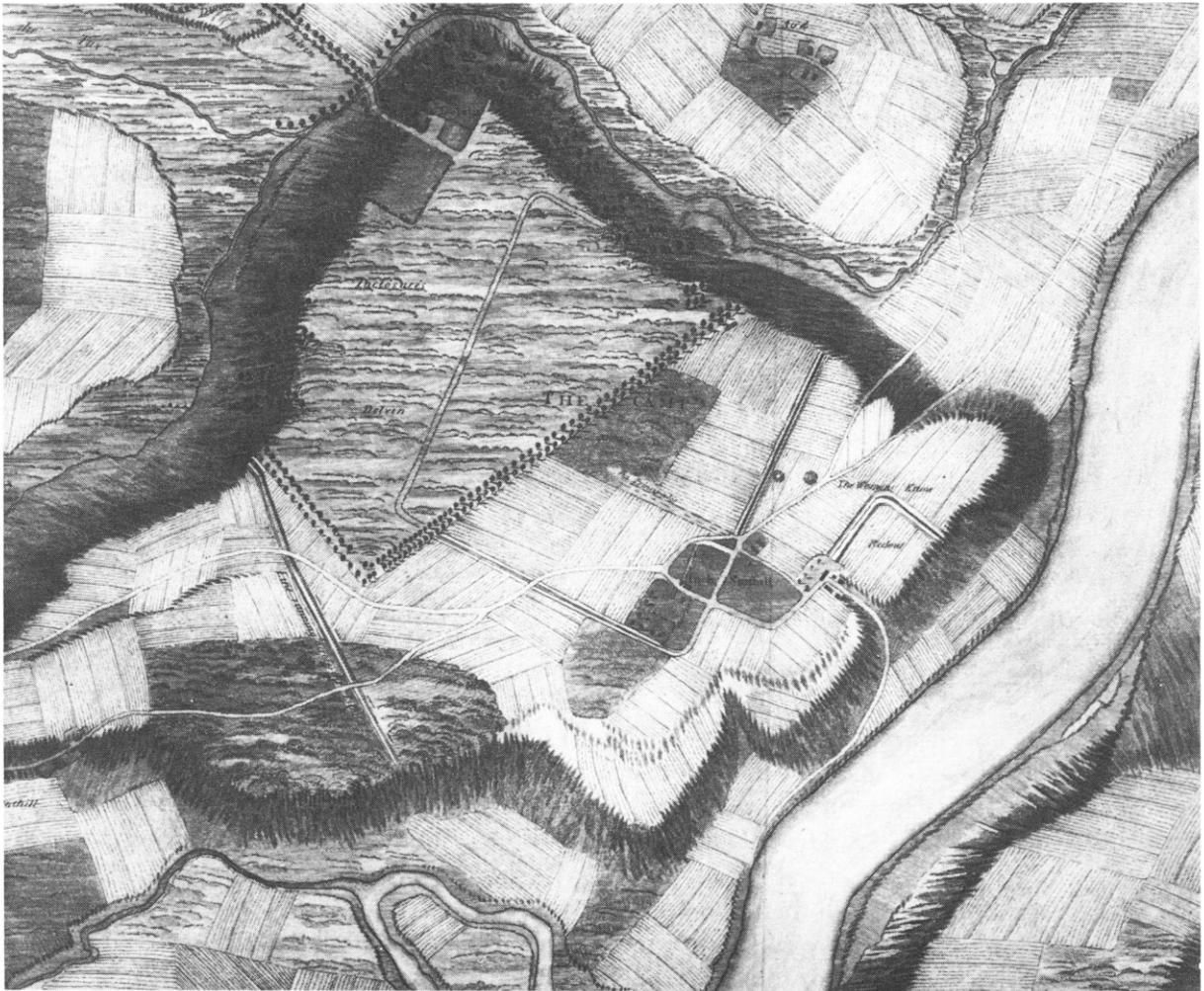


Figure 2 Oblique aerial photograph of parts of sites **A** and **B** (**Map 2**) looking north-west. The temporary camp (**B**) is more dominant in this photograph than the fortress (**A**).

Turn over for the next source

Turn over ▶

Figure 3 General W Roy's map of Inchtuthil, 1755.
(Reproduced from General Roy's book *Military Antiquities*.)



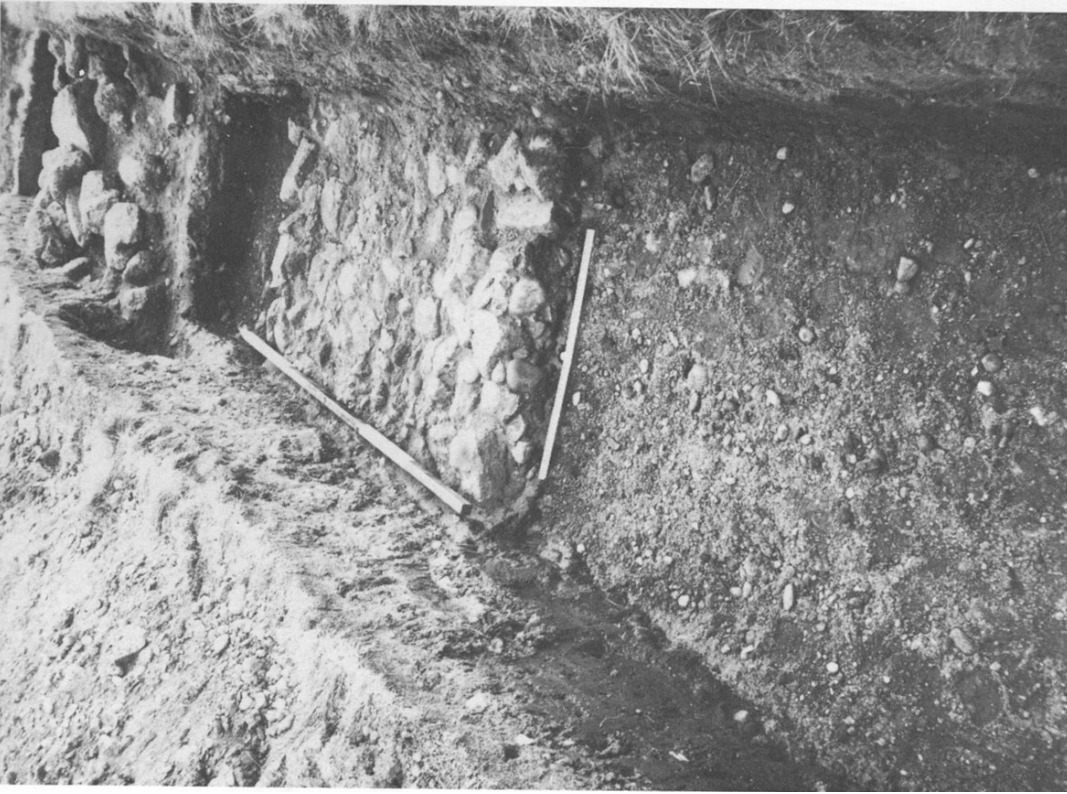


Figure 5 The wall and rampart on the south-east side of the fortress (see **Figure 1**) looking south-east (ranging poles are 2 metres and 0.6 metres).

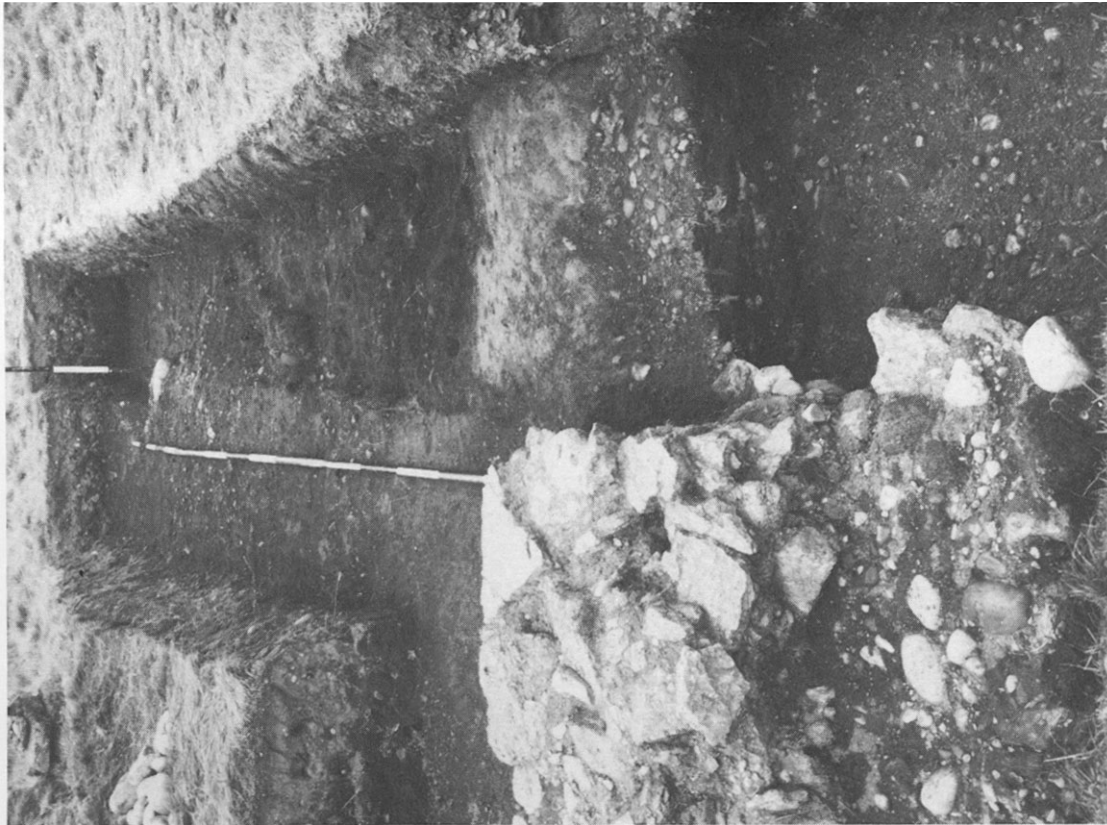


Figure 4 The south-west gate looking north (see **Figure 1**) (horizontal ranging pole is 2 metres).

Turn over ▶

Figure 6 Reconstruction of the turf rampart and the gate-towers at Inchtuthil.

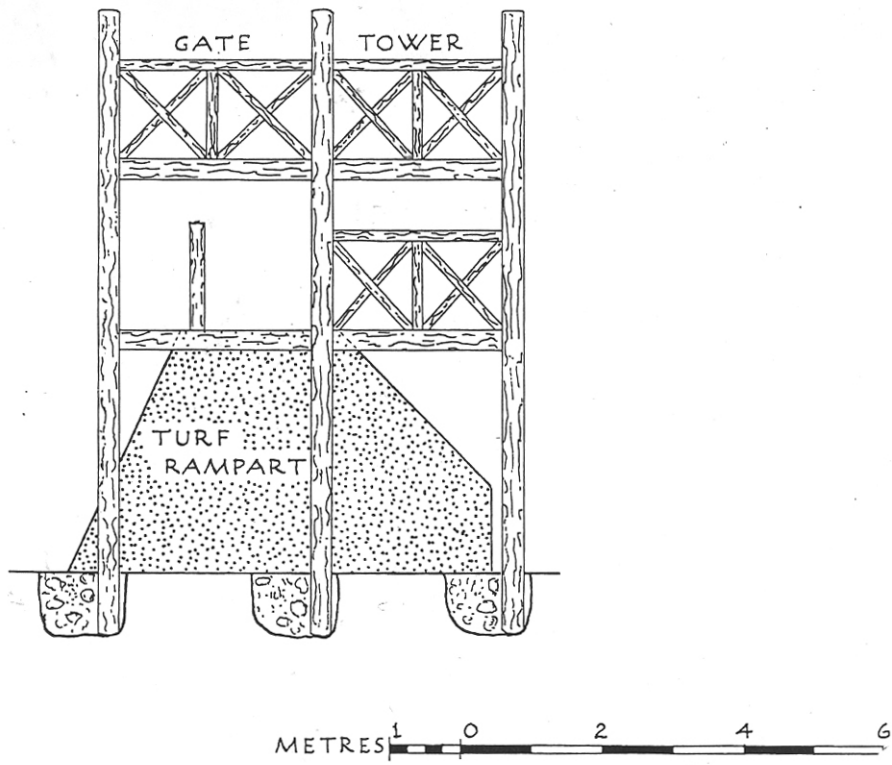
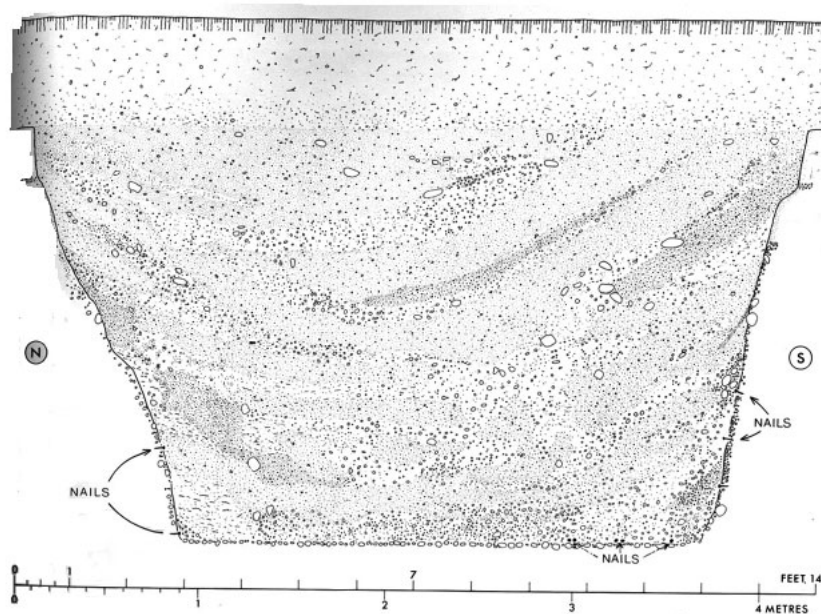


Figure 7(a) The nails and metal tyre found dumped in the timber-lined pit in the *fabrica* (see **Figure 1** and **Figure 7(b)**). The scale rule is 24 inches (approximately 60cm) long.

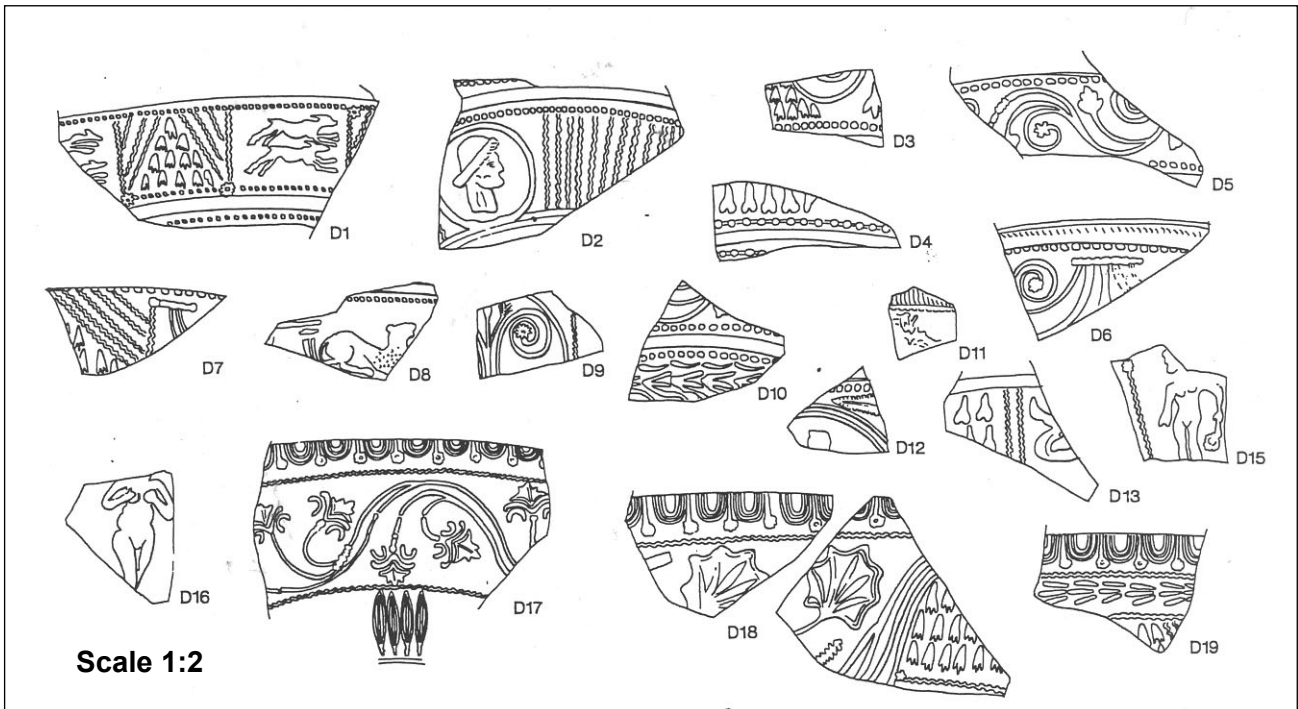


Figure 7(b) The timber-lined pit in the *fabrica* where the nails and tyre in **Figure 7(a)** were found. Note also the *in-situ* nails at the sides of the pit.



Turn over ►

Figure 8 Fragments of Samian ware pottery.



END OF SOURCES

ACKNOWLEDGEMENT OF COPYRIGHT-HOLDERS AND PUBLISHERS

Permission to reproduce all copyright material has been applied for. In some cases efforts to contact copyright-holders have been unsuccessful and AQA will be happy to rectify any omissions of acknowledgements in future papers if notified.

All Figures © Society for the Promotion of Roman Studies.

Copyright © 2011 AQA and its licensors. All rights reserved.