



General Certificate of Education
Advanced Subsidiary Examination
June 2009

Archaeology

ARCH2

Unit 2 Archaeological Skills and Methods

Sources Booklet

There is no source material printed on this page

SOURCES FOR USE IN ANSWERING QUESTIONS IN SECTION A

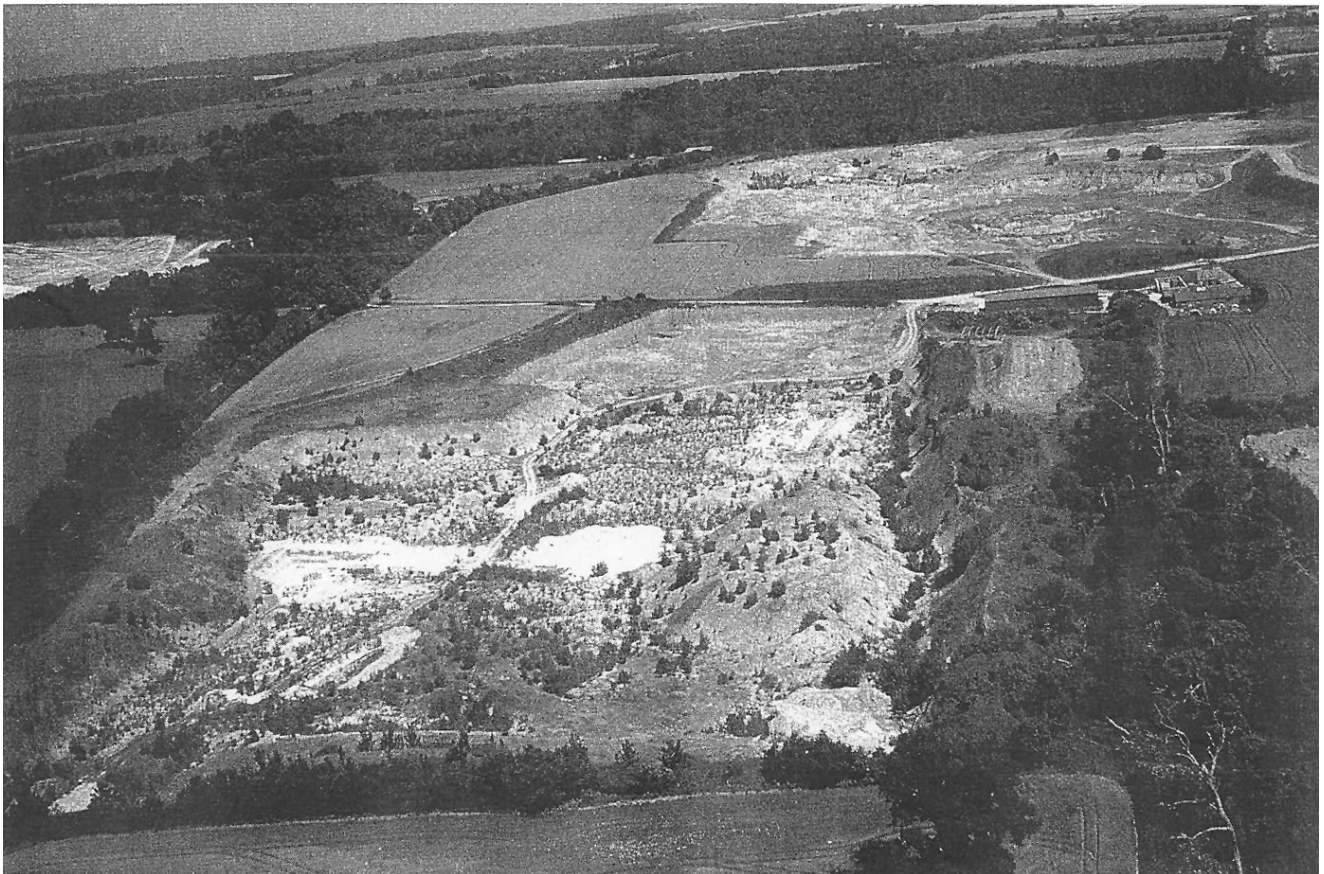
Introduction: Boxgrove

The Lower Palaeolithic site of Boxgrove is located in a gravel quarry to the east of Chichester, West Sussex (**Photograph 1** and **Maps 1 and 2**). Research in the area was begun in 1984. A hominid shin bone belonging to the species *Homo heidelbergensis* was found in 1993, and a tooth belonging to the same species in 1995. These discoveries were of particular significance due to their undisturbed context, and the presence in the same deposits of *in-situ* processed animal remains and stone tools.

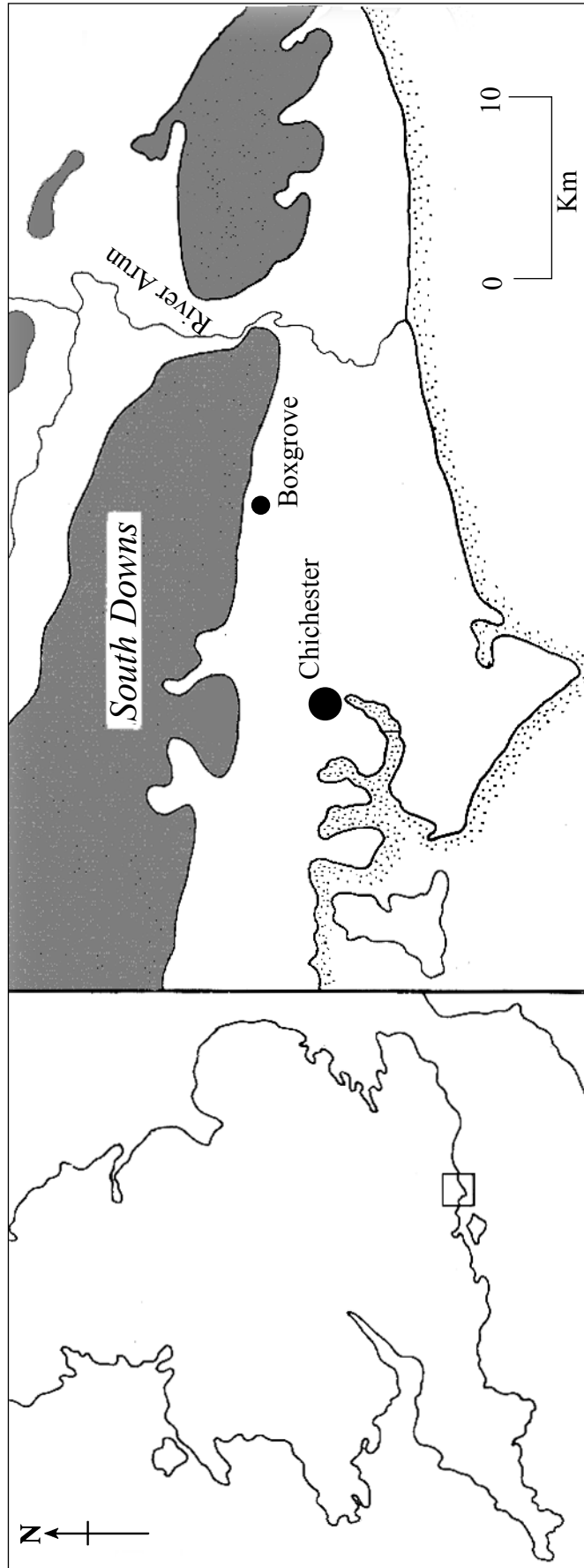
Analysis of faunal and geological evidence suggests that the site at Boxgrove dates from about 500 000 years ago, making it amongst the earliest sites of human activity in Europe.

Glossary:

Hominid = early human ancestor

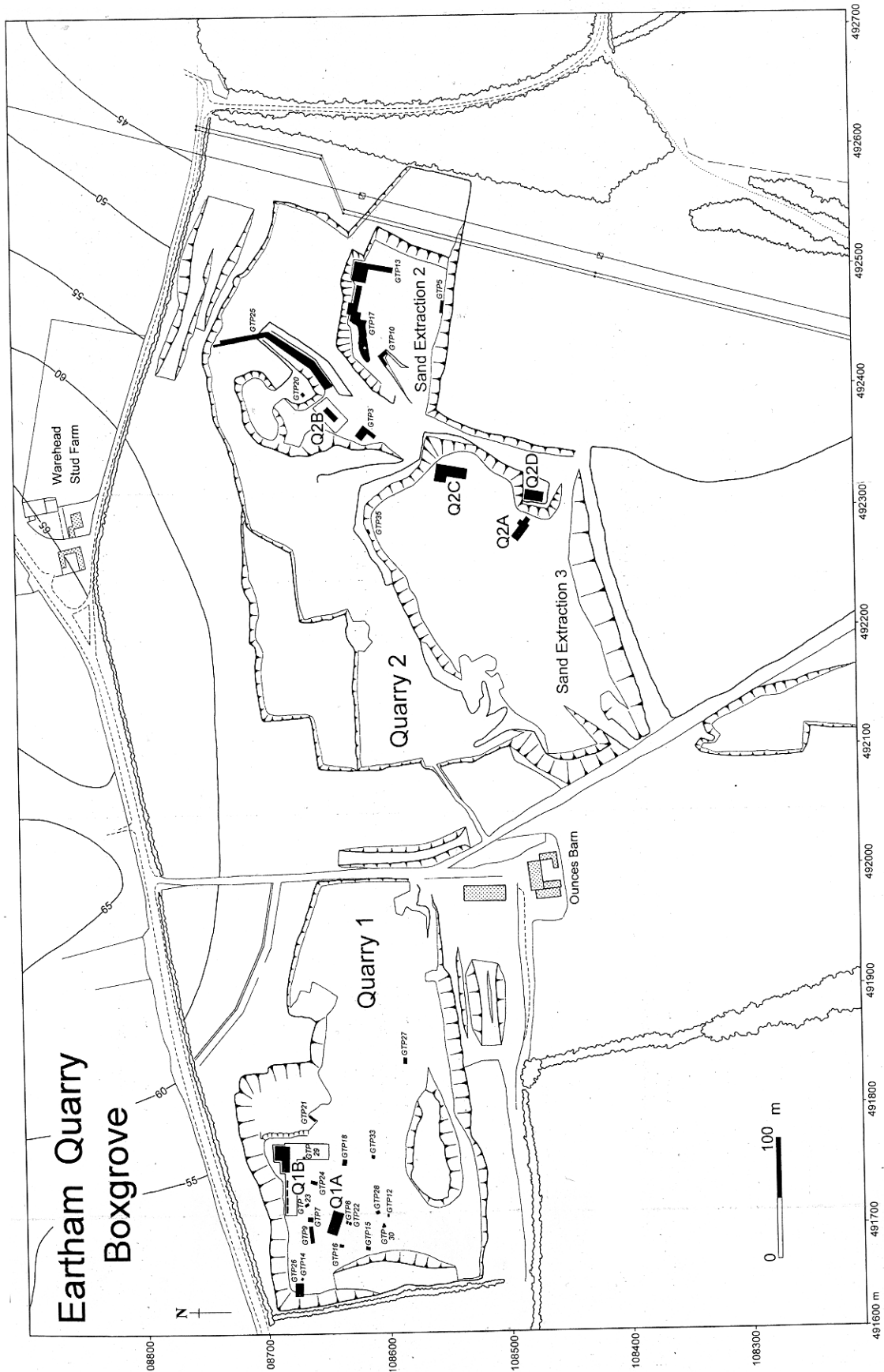
Photograph 1 Aerial view of the gravel quarries, looking east**Turn over ▶**

Map 1 Location of Boxgrove



Key ■ Land over 50 m

Map 2 Boxgrove gravel quarries, showing the location of the principal excavation areas (in black) Area Q1B (Figure 1) is in the northern part of Quarry 1

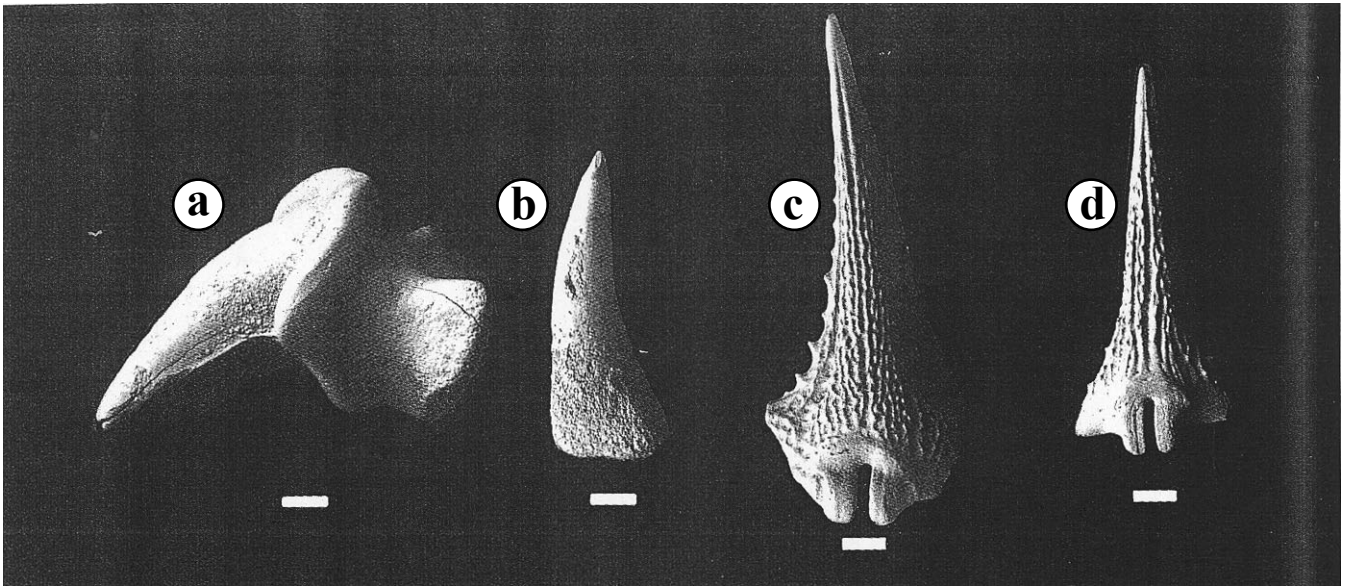


Turn over ▶

Figure 1 1996 excavations, looking west
Area Q1B as shown on Map 2



Figure 2 Fish bones found during the Boxgrove excavations



Scale bars under **a–d** are 0.5 mm

Turn over for the next source

Turn over ▶

Figure 3 Drawing of a handaxe from Q1B excavation

NB This is **not** the same handaxe as shown in **Figure 4**

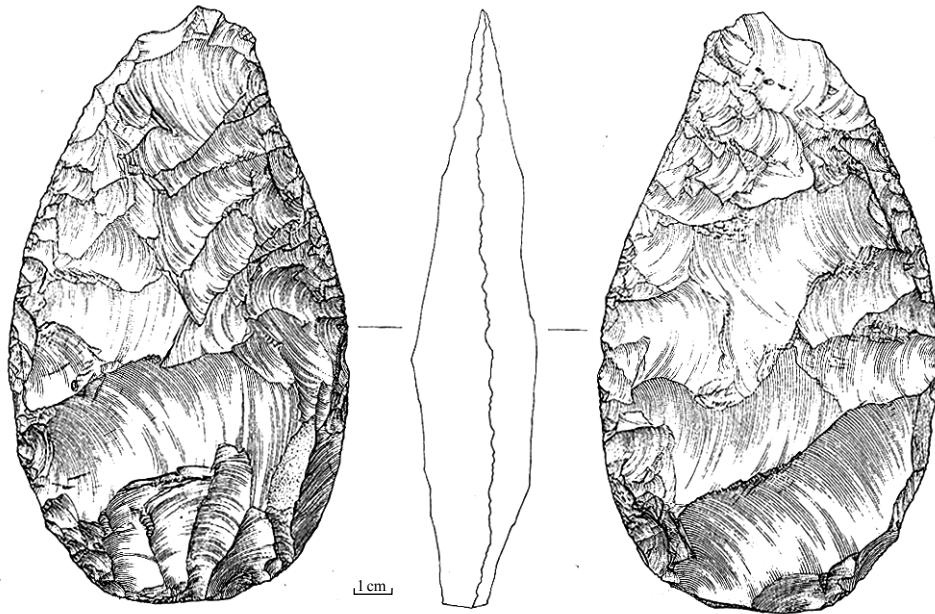
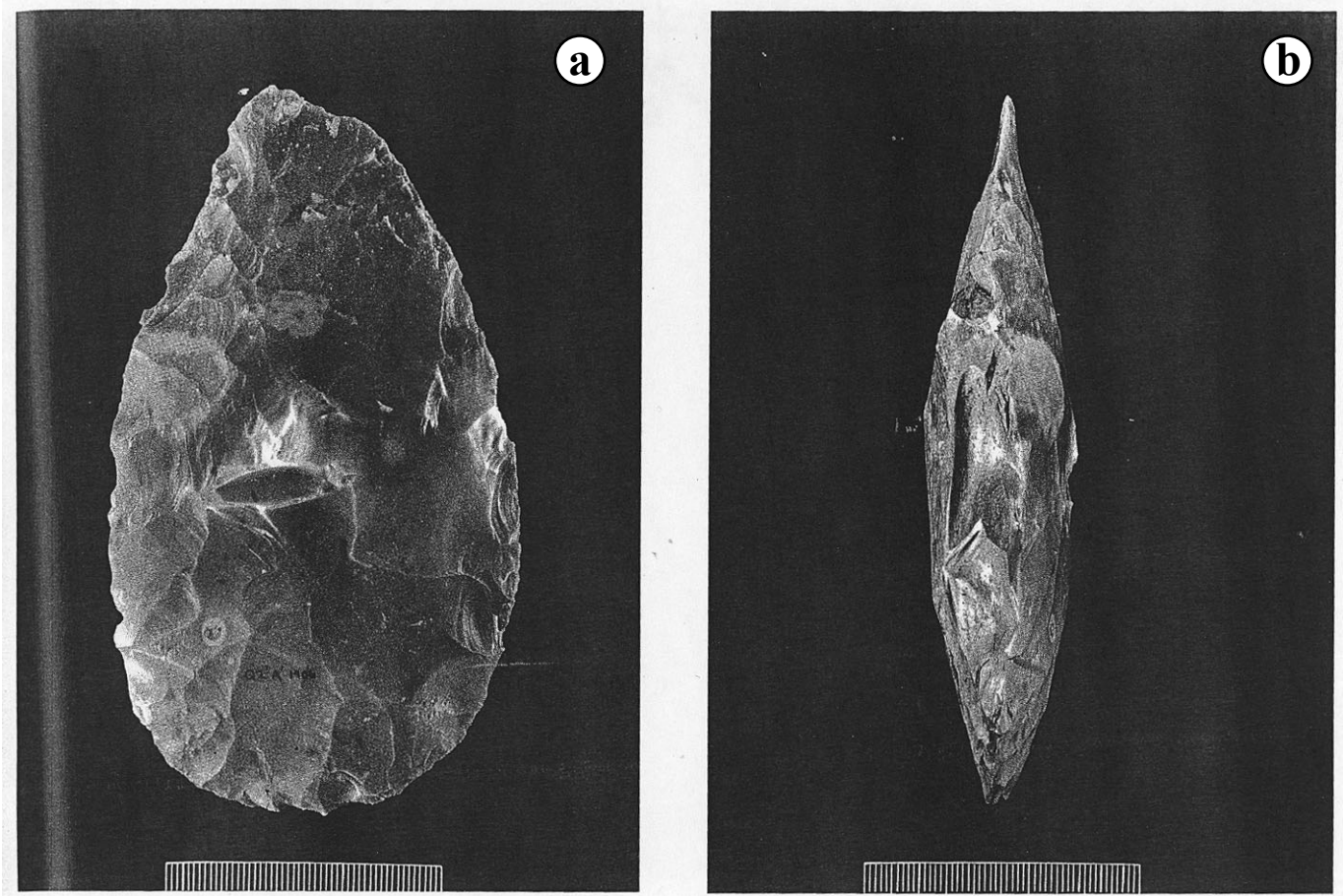


Figure 4 Photographs of a handaxe from Q1A excavation
NB This is **not** the same handaxe as shown in **Figure 3**



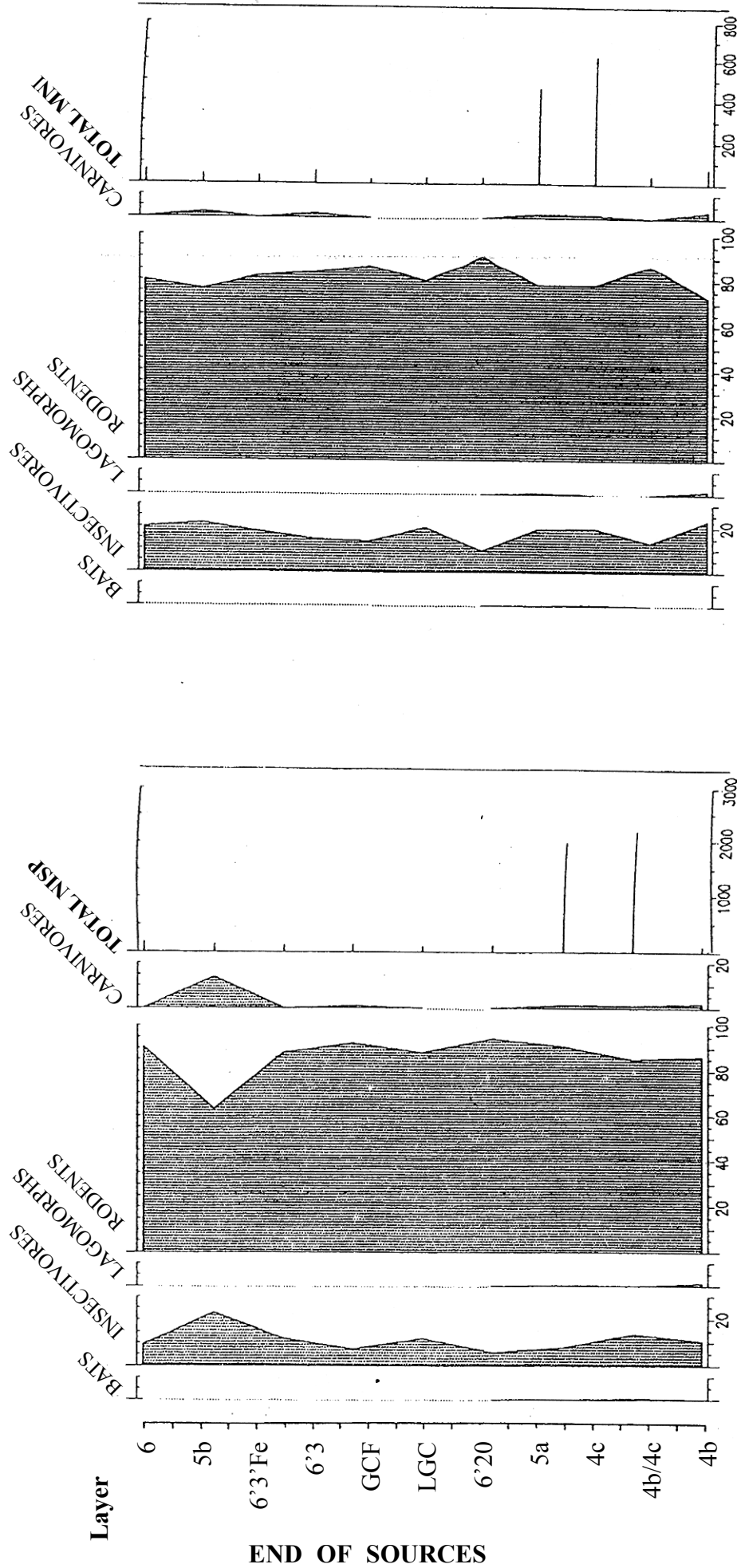
Scale boxes have 1 mm divisions

Turn over for the next source

Turn over ▶

Figure 5 Percentage frequency diagram of small mammal bones, showing NISP on the left and MNI on the right

Glossary: Lagomorph = hare



END OF SOURCES

There is no source material printed on this page

There is no source material printed on this page

ACKNOWLEDGEMENT OF COPYRIGHT-HOLDERS AND PUBLISHERS

Permission to reproduce all copyright material has been applied for. In some cases efforts to contact copyright-holders have been unsuccessful and AQA will be happy to rectify any omissions of acknowledgements in future papers if notified.

Figure 1: © Mike Pitts

Other copyright source material © English Heritage

Copyright © 2009 AQA and its licensors. All rights reserved.