

General Certificate of Education
June 2007
Advanced Level Examination



ARCHAEOLOGY
Unit 4 Settlement and Social Organisation

ACH4

Tuesday 12 June 2007 9.00 am to 10.30 am

For this paper you must have:

- a 12-page answer book.

Time allowed: 1 hour 30 minutes

Instructions

- Use blue or black ink or ball-point pen. Use pencil only for drawing.
- Write the information required on the front of your answer book. The *Examining Body* for this paper is AQA. The *Paper Reference* is ACH4.
- Answer **two** questions.
Answer **Question 1** from **Section A** and **one** question from **Section B**.
- Do all rough work in the answer book. Cross through any work you do not want to be marked.

Information

- The maximum mark for this unit is 50.
- The marks for questions are shown in brackets.
- You will be marked on your ability to use good English, to organise information clearly and to use specialist vocabulary where appropriate.
- You may make illustrations in your answer book provided they explain or add to your answer.
- In answering the questions full credit will only be given where it is clear that, in addition to commenting in detail on your observations on the sources provided, you have also used particular, detailed archaeological examples drawn from your studies in the context that you have chosen. Limited use may be made of appropriate historical sources but these should not form the main substance of your discussion.
- You may use a magnifying glass to assist interpretation of figures.

SECTION A

Study **Figures 1 to 3** on this and the following page.

Answer **both** parts of the question that follows.

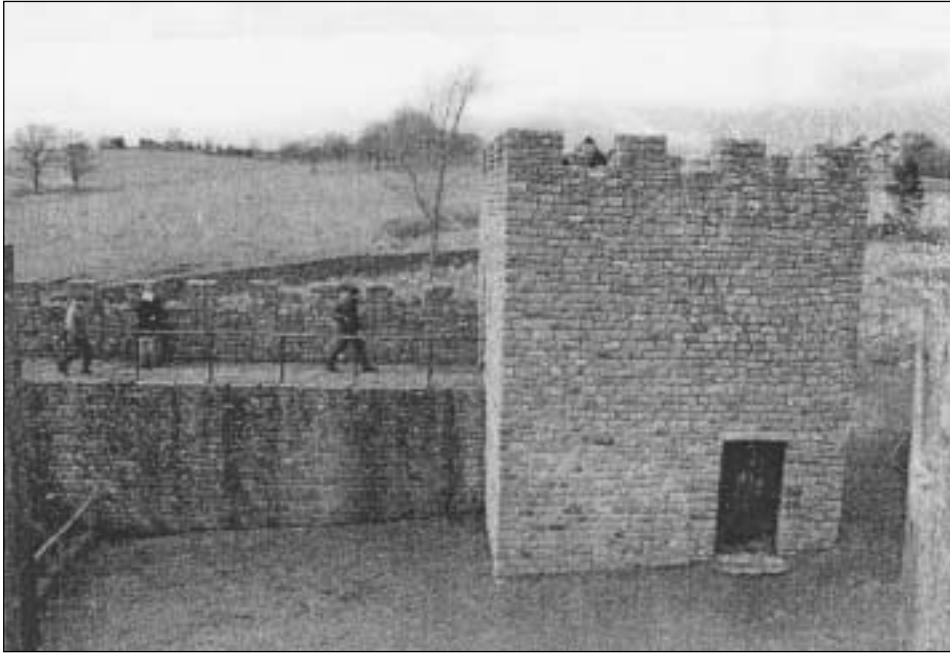
Figure 1 Archaeological reconstruction of a Mesolithic shelter at Archaeolink, Scotland



Figure 2 Archaeological reconstruction of an Iron Age crannog on Loch Tay, Scotland



Figure 3 Archaeological reconstruction of a section of Hadrian's Wall and a turret, at Vindolanda, Northumberland



- 1 (a) Using **one** of the figures and your own knowledge, explain the evidence and methods archaeologists use when attempting to reconstruct buildings from the past. *(12 marks)*
- (b) Using **at least one** of the figures and your own knowledge, consider the value to archaeology of experimental buildings. *(13 marks)*

Turn over for the next question

Turn over ▶

SECTION B

Answer **one** question from this section.

- 2 Discuss the nature and functions of boundaries for a period you have studied. *(25 marks)*
- 3 Using a region with which you are familiar, discuss how archaeologists have been able to establish the reasons for the emergence of complex societies. *(25 marks)*
- 4 To what extent can archaeologists understand the nature of warfare in the past without the aid of historical records? *(25 marks)*

END OF QUESTIONS

ACKNOWLEDGEMENT OF COPYRIGHT-HOLDERS AND PUBLISHERS

Permission to reproduce all copyright material has been applied for. In some cases efforts to contact copyright-holders have been unsuccessful and AQA will be happy to rectify any omissions of acknowledgements in future papers if notified.

Figures 1 to 3: By permission of J GRANT

Copyright © 2007 AQA and its licensors. All rights reserved.