

**ADVANCED GCE UNIT**

**G055**

**APPLIED INFORMATION AND COMMUNICATION TECHNOLOGY**

Unit 16: Networking Solutions

**FRIDAY 15 JUNE 2007**

Afternoon

Time: 1 hour 30 minutes

Additional materials:

Pre-release material and tasks with candidate instructions

Candidates pre-prepared materials



Candidate  
Name

Centre  
Number

--	--	--	--	--

Candidate  
Number

--	--	--	--

**INSTRUCTIONS TO CANDIDATES**

- Write your name, Centre number and Candidate number in the boxes above.
- Answer **all** the questions.
- Use blue or black ink. Pencil may be used for graphs and diagrams only.
- Read each question carefully and make sure you know what you have to do before starting your answer.
- Do **not** write in the bar code.
- Do **not** write outside the box bordering each page.
- WRITE YOUR ANSWER TO EACH QUESTION IN THE SPACE PROVIDED. ANSWERS WRITTEN ELSEWHERE WILL NOT BE MARKED.

**INFORMATION FOR CANDIDATES**

- The number of marks for each question is given in brackets [ ] at the end of each question or part question.
- The total number of marks for this paper is 100.
- No marks will be awarded for using brand names of software packages or hardware.

Question number	For Examiner's Use Only	Max
Task 2		21
Task 3		9
1		3
2		4
3		2
4		13
5		4
6		8
7		4
8		8
9		4
10		6
11		2
12		4
13		2
14		4
15		2
<b>TOTAL</b>		<b>100</b>

This document consists of **11** printed pages, **1** blank page and an insert.

**BLANK PAGE**

**PLEASE DO NOT WRITE ON THIS PAGE**

**Section A**

**This section relates to the case study and tasks on Rolling Rocks.**

**1** Identify **three** costs to Rolling Rocks of maintaining and supervising the network.

Cost 1 .....

.....

Cost 2 .....

.....

Cost 3 .....

.....[3]

**2** Describe **two** disadvantages to Rolling Rocks of networking the computers.

Disadvantage 1 .....

.....

.....

.....

Disadvantage 2 .....

.....

.....

.....[4]

**3** Rolling Rocks can choose to install a peer-to-peer network or a client-server network.

Give **two** reasons why Rolling Rocks might consider a client-server network.

Reason 1 .....

.....

Reason 2 .....

.....[2]

4 Two of the network topologies available to Rolling Rocks are bus and star. Fig. 1 shows a diagram of the logical layout for a bus topology.

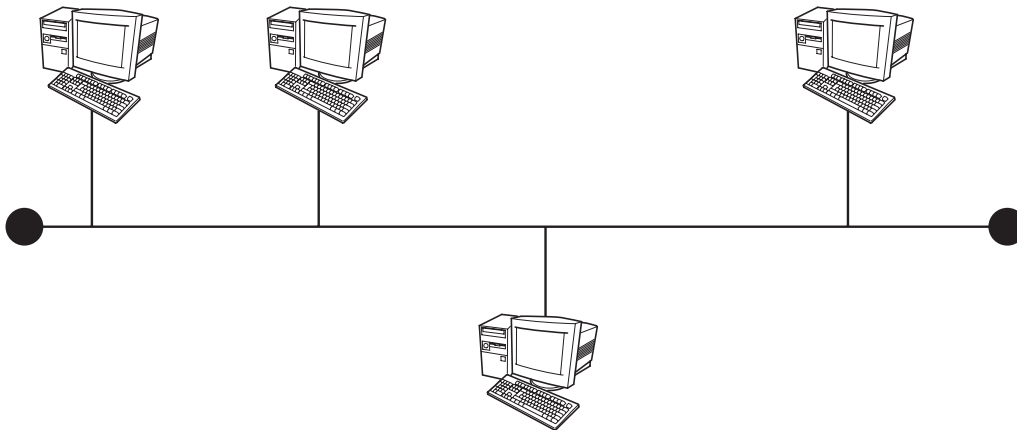


Fig. 1

(a) Give **three** features of a bus topology.

Feature 1 .....

.....

Feature 2 .....

.....

Feature 3 .....

.....[3]

(b) (i) Draw a diagram to show a star topology.



5 The network might be connected using fibre optic cable.

(a) Identify a connector that would be used with this cable.

.....[1]

(b) Identify **one** characteristic of fibre optic cable.

.....  
.....[1]

(c) Explain why this type of cable and connector is unlikely to be considered suitable for the network at Rolling Rocks.

.....  
.....  
.....  
.....[2]

6 The network at Rolling Rocks will need some new hardware.

Describe the function of each of the following types of hardware.

(a) active hub .....  
.....  
.....  
.....[2]

(b) gateway .....  
.....  
.....  
.....[2]

(c) Uninterrupted Power Supply (UPS) .....  
.....  
.....  
.....[2]

(d) file server .....  
.....  
.....  
.....[2]

7 Rolling Rocks might choose to use the NetBEUI protocol throughout their local area network.

(a) Describe the NetBEUI protocol.

.....  
.....  
.....  
.....[2]

(b) Explain why this protocol might be chosen.

.....  
.....  
.....  
.....[2]

8 The Managing Director understands that there could be a higher risk of hackers accessing the network once it has been installed and connected to the Internet.

(a) What is a hacker?

.....[1]

(b) Describe how a hacker might access the network?

.....  
.....  
.....  
.....  
.....  
.....[3]



(c) Describe **two** ways that the company can protect itself against the threat of attack by hackers.

Way 1 .....

.....

.....

.....

Way 2 .....

.....

.....

.....[4]

9 Rolling Rocks could produce their own web-based advertising materials.

Describe the benefits of using web-based advertising.

.....

.....

.....

.....

.....

.....

.....

.....

.....[4]

**Section B**

**You do not need the case study or your tasks to answer these questions. Answer these questions on the lines provided.**

**10** A company wants to set up a network that allows its travelling sales staff to communicate with each other and with the head office while out on sales calls. Technology can be used to allow them to use a Virtual Private Network (VPN) operating over the Internet.

**(a)** Describe **one** advantage of using a VPN.

.....  
.....  
.....  
.....[2]

**(b)** Describe **one** disadvantage of using a VPN.

.....  
.....  
.....  
.....[2]

**(c)** Identify **two** items of hardware that would be needed to create a VPN.

Item 1 .....  
.....  
Item 2 .....  
.....[2]

**11** When connecting a network to the Internet a dial-up or a broadband connection can be used.

Describe **one** difference between a dial-up and a broadband connection.

.....  
.....  
.....  
.....[2]



15 A problem log will contain details of problems encountered while using a network.

How can problem logs be filed so that they can be effectively retrieved?

.....

.....

.....

.....[2]

---

Permission to reproduce items where third-party owned material protected by copyright is included has been sought and cleared where possible. Every reasonable effort has been made by the publisher (OCR) to trace copyright holders, but if any items requiring clearance have unwittingly been included, the publisher will be pleased to make amends at the earliest possible opportunity.

OCR is part of the Cambridge Assessment Group. Cambridge Assessment is the brand name of University of Cambridge Local Examinations Syndicate (UCLES), which is itself a department of the University of Cambridge.