

Monday 18 June 2012 – Morning

A2 GCE HEALTH AND SOCIAL CARE

F921/01 Anatomy and Physiology in Practice

Candidates answer on the Question Paper.

OCR supplied materials:

None

Other materials required:

None

Duration: 1 hour 30 minutes



Candidate forename		Candidate surname	
-----------------------	--	----------------------	--

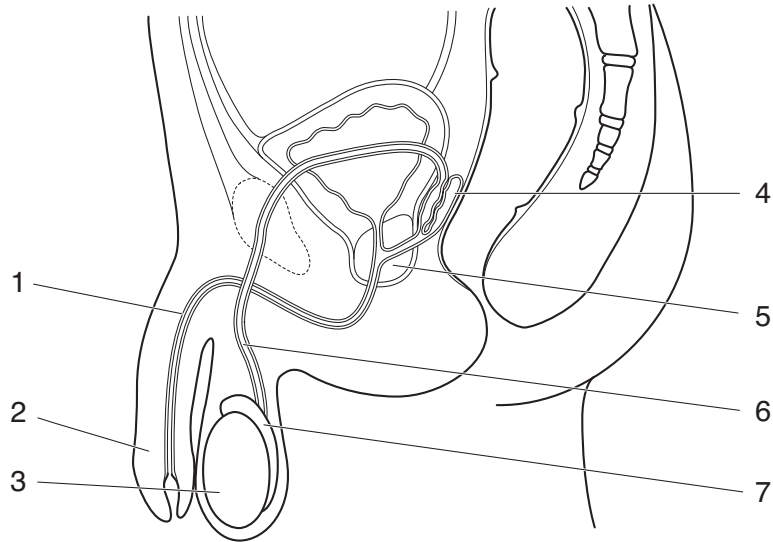
Centre number						Candidate number				
---------------	--	--	--	--	--	------------------	--	--	--	--

INSTRUCTIONS TO CANDIDATES

- Write your name, centre number and candidate number in the boxes above. Please write clearly and in capital letters.
- Use black ink. HB pencil may be used for graphs and diagrams only.
- Read each question carefully. Make sure you know what you have to do before starting your answer.
- Write your answer to each question in the space provided. If additional space is required, you should use the lined page at the end of this booklet. The question number(s) must be clearly shown.
- Answer **all** the questions.
- Do **not** write in the bar codes.

INFORMATION FOR CANDIDATES

- The number of marks is given in brackets [] at the end of each question or part question.
- The total number of marks for this paper is **100**.
- You will be awarded marks for the quality of written communication where an answer requires a piece of extended writing.
- This document consists of **12** pages. Any blank pages are indicated.



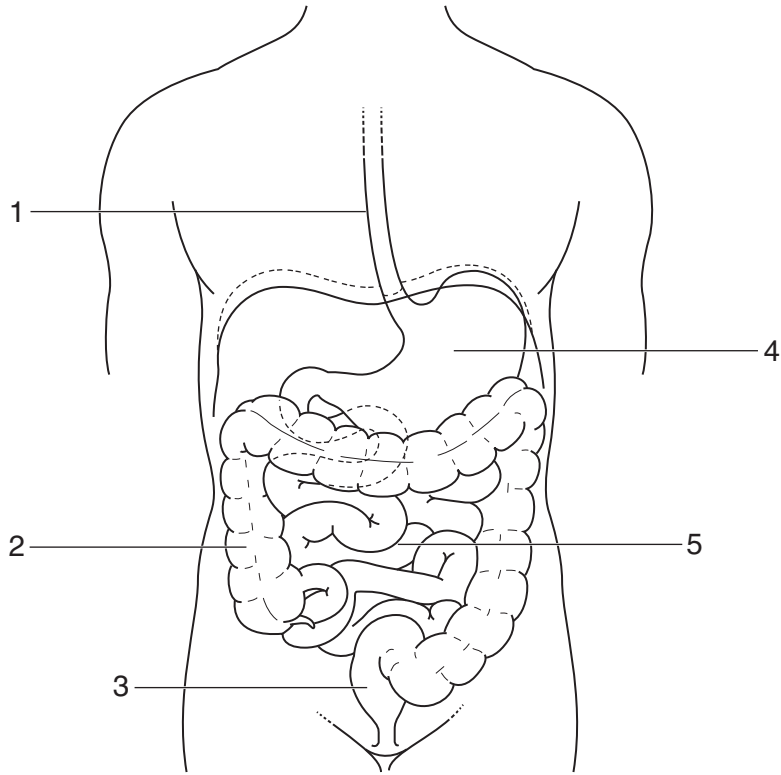
Male Reproductive System

(a) Identify each of the structures labelled 1–7.

- 1
- 2
- 3
- 4
- 5
- 6
- 7 [7]

(b) Describe the function of each structure identified.

- 1
.....
.....
- 2
.....
.....
- 3
.....
.....



Digestive system

(a) Identify each of the structures labelled 1–5.

- 1
- 2
- 3
- 4
- 5 **[5]**

(b) Outline the process of digestion in the stomach and the duodenum (first section of the small intestine).

.....

.....

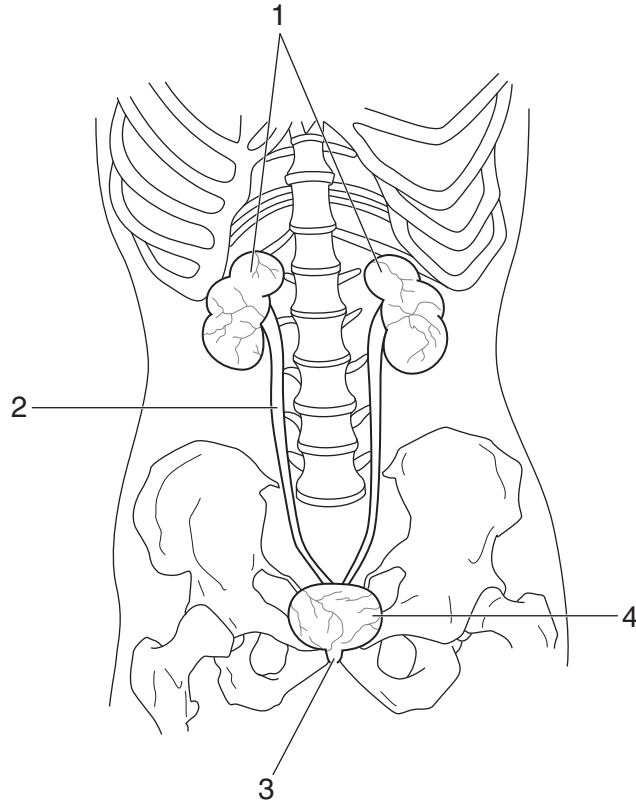
.....

.....

.....

.....

.....



Renal system

(a) Identify each of the structures labelled 1–4.

- 1
- 2
- 3
- 4 [4]

(b) Outline the process of urine production in the kidney.

.....

.....

.....

.....

.....

.....

.....

