

Mark Scheme (Results)

June 2011

GCE Physics (6PH08) Paper 01
Experimental Physics (WA)

Edexcel is one of the leading examining and awarding bodies in the UK and throughout the world. We provide a wide range of qualifications including academic, vocational, occupational and specific programmes for employers.

Through a network of UK and overseas offices, Edexcel's centres receive the support they need to help them deliver their education and training programmes to learners.

For further information, please call our GCE line on 0844 576 0025, our GCSE team on 0844 576 0027, or visit our website at www.edexcel.com.

If you have any subject specific questions about the content of this Mark Scheme that require the help of a subject specialist, you may find our **Ask The Expert** email service helpful.

Ask The Expert can be accessed online at the following link:
<http://www.edexcel.com/Aboutus/contact-us/>

Alternatively, you can contact our Science Subject Advisor directly by sending an email to ScienceSubjectAdvisor@EdexcelExperts.co.uk. You can also telephone 0844 576 0037 to speak to a member of our subject advisor team.

(If you are calling from outside the UK please dial + 44 1204 770 696 and state that you would like to speak to the Science subject specialist).

June 2011

Publications Code UA028559

All the material in this publication is copyright

© Edexcel Ltd 2011

General Marking Guidance

- All candidates must receive the same treatment. Examiners must mark the first candidate in exactly the same way as they mark the last.
- Mark schemes should be applied positively. Candidates must be rewarded for what they have shown they can do rather than penalised for omissions.
- Examiners should mark according to the mark scheme not according to their perception of where the grade boundaries may lie.
- There is no ceiling on achievement. All marks on the mark scheme should be used appropriately.
- All the marks on the mark scheme are designed to be awarded. Examiners should always award full marks if deserved, i.e. if the answer matches the mark scheme. Examiners should also be prepared to award zero marks if the candidate's response is not worthy of credit according to the mark scheme.
- Where some judgement is required, mark schemes will provide the principles by which marks will be awarded and exemplification may be limited.
- When examiners are in doubt regarding the application of the mark scheme to a candidate's response, the team leader must be consulted.
- Crossed out work should be marked UNLESS the candidate has replaced it with an alternative response.

Physics Specific Marking Guidance

Underlying principle

The mark scheme will clearly indicate the concept that is being rewarded, backed up by examples. It is not a set of model answers.

For example:

Horizontal force of hinge on table top

66.3 (N) or 66 (N) **and** correct indication of direction [no ue]

[Some examples of direction: acting from right (to left) / to the left / West / opposite direction to horizontal. May show direction by arrow. Do not accept a minus sign in front of number as direction.]

This has a clear statement of the principle for awarding the mark, supported by some examples illustrating acceptable boundaries.

Mark scheme format

- Bold lower case will be used for emphasis.
- Round brackets () indicate words that are not essential e.g. "(hence) distance is increased".
- Square brackets [] indicate advice to examiners or examples e.g. [Do not accept gravity] [ecf].

Unit error penalties

- A separate mark is not usually given for a unit but a missing or incorrect unit will normally cause the final calculation mark to be lost.
- Incorrect use of case e.g. 'Watt' or 'w' will not be penalised.
- There will be no unit penalty applied in 'show that' questions or in any other question where the units to be used have been given.
- The same missing or incorrect unit will not be penalised more than once within one question but may be penalised again in another question.
- Occasionally, it may be decided not to penalise a missing or incorrect unit e.g. the candidate may be calculating the gradient of a graph, resulting in a unit that is not one that should be known and is complex.
- The mark scheme will indicate if no unit error penalty is to be applied by means of [no ue].

Significant figures

- Use of an inappropriate number of significant figures in the theory papers will normally only be penalised in 'show that' questions where use of too few significant figures has resulted in the candidate not demonstrating the validity of the given answer.
- Use of an inappropriate number of significant figures will normally be penalised in the practical examinations or coursework.
- Using $g = 10 \text{ m s}^{-2}$ **will** be penalised.

Calculations

- Bald (i.e. no working shown) correct answers score full marks unless in a 'show that' question.
- Rounding errors will not be penalised.
- If a 'show that' question is worth 2 marks then both marks will be available for a reverse working; if it is worth 3 marks then only 2 will be available.
- use of the formula means that the candidate demonstrates substitution of physically correct values, although there may be conversion errors e.g. power of 10 error.
- recall of the correct formula will be awarded when the formula is seen or implied by substitution.
- The mark scheme will show a correctly worked answer for illustration only.

Question Number	Answer	Mark						
1 (a)	<table border="1" data-bbox="424 241 1241 506"> <thead> <tr> <th data-bbox="424 241 746 282">Measurement</th> <th data-bbox="753 241 1241 282">Instrument</th> </tr> </thead> <tbody> <tr> <td data-bbox="424 282 746 389">Width</td> <td data-bbox="753 282 1241 389">(Vernier) callipers</td> </tr> <tr> <td data-bbox="424 389 746 506">Thickness</td> <td data-bbox="753 389 1241 506">Micrometer (screw gauge) accept <u>digital</u> (vernier) callipers</td> </tr> </tbody> </table> <ul style="list-style-type: none"> <li data-bbox="354 542 1321 577">• Both correct (1) <p data-bbox="344 618 1321 685">Reason: To obtain both measurements to 3 SF (1)</p>	Measurement	Instrument	Width	(Vernier) callipers	Thickness	Micrometer (screw gauge) accept <u>digital</u> (vernier) callipers	2
Measurement	Instrument							
Width	(Vernier) callipers							
Thickness	Micrometer (screw gauge) accept <u>digital</u> (vernier) callipers							
1 (b)	<ul style="list-style-type: none"> <li data-bbox="395 775 1321 810">• Mean values for both width and thickness seen (1) <li data-bbox="395 810 1321 846">• Correct substitution into density equation (1) <li data-bbox="395 846 1321 882">• Correct value of density to 3 or 4 SF and unit (1) <p data-bbox="344 922 647 958"><u>Example of calculation</u></p> <p data-bbox="354 958 1152 1012">Volume = $1.00 \times 28.9 \times 10^{-3} \times 5.99 \times 10^{-3} = 1.73 \times 10^{-4} \text{ m}^{-3}$</p> <p data-bbox="344 1048 1200 1137">Density = $0.1064 / 1.73 \times 10^{-4} = 615 \text{ kg m}^{-3}$ (Accept 0.615 g cm^{-3} and $6.15 \times 10^{-4} \text{ g mm}^{-3}$)</p>	3						
1 (c)	<ul style="list-style-type: none"> <li data-bbox="395 1223 1321 1258">• Uncertainty in t or w correct (1) <li data-bbox="395 1258 1321 1294">• Both % uncertainties calculated correctly (allow ecf) (1) <li data-bbox="395 1294 1321 1330">• % U added to combine (1) <p data-bbox="344 1366 1216 1473">Eg Width $\pm 0.55 \text{ mm}$ (accept $\pm 1.1 \text{ mm}$), %U = $0.55/28.9 = 1.9\%$ Thickness $\pm 0.05 \text{ mm}$ (accept $\pm 0.1 \text{ mm}$), %U = $0.05/5.99 = 0.83\%$ % uncertainties added - expect 2.7% or 5.4%</p>	3						
Total for question 1		8						

Question Number	Answer	Mark	
2	Sensible comment on safety e.g. Keep hands away from the source	(1)	1
	Any FIVE from		
	Measure (and record) background (count rate)	(1)	
	Mark d on diagram	(1)	
	Source and counter in line	(1)	
	Use metre rule to measure d (may be from diagram)	(1)	
	Measure to the same points (on the tube and source) each time	(1)	
	Start with tube close to source (and increase d)	(1)	
	Zero counter and start clock	(1)	
	Measure count for the same time each time	(1)	
	Repeat readings and find mean	(1)	
	For $5 \text{ mm} < d < 35 \text{ mm}$	(1)	
Plot graph of count against d	(1)		
Where count (rate) falls sharply/to background is distance travelled in air	(1)	Max 5	
Total for question 2		6	

Question Number	Answer	Mark	
3(a)(i)	Diagram to show water/oil bath surrounding flask	(1)	2
	Means of heating apparatus, labelled	(1)	
3(a)(ii)	Ice to get to 0°C and method to reach 100°C	(1)	1
3(a)(iii)	Temperature sensor/thermometer submerged in the water/oil bath (may be from diagram)	(1)	1
3(a)(iv)	Any TWO from		Max 2
	Flask full immersed in the water/oil bath	(1)	
	Remove heat source whilst taking reading or adjust thermostat on water bath	(1)	
	Allow (time for) apparatus to come to thermal equilibrium	(1)	
	Temperature sensor close to flask or temperature sensor not touching sides or bottom	(1)	

3(b)

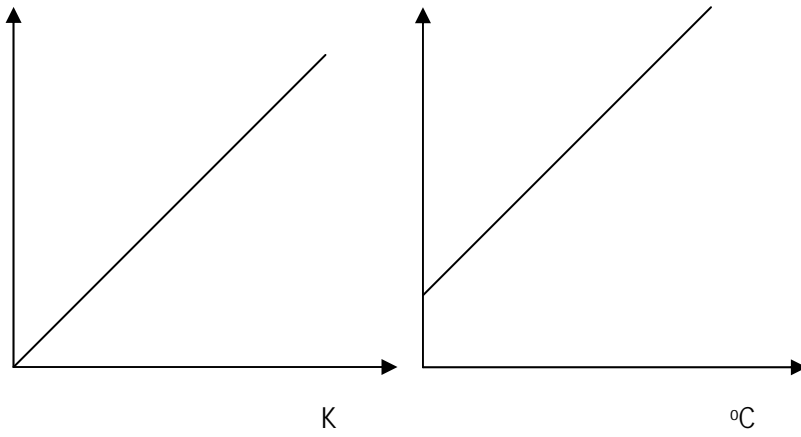
Straight line graph
Temperature axis labelled °C, K or absolute temperature
Graph consistent with temperature scale

(1)

(1)

(1)

3

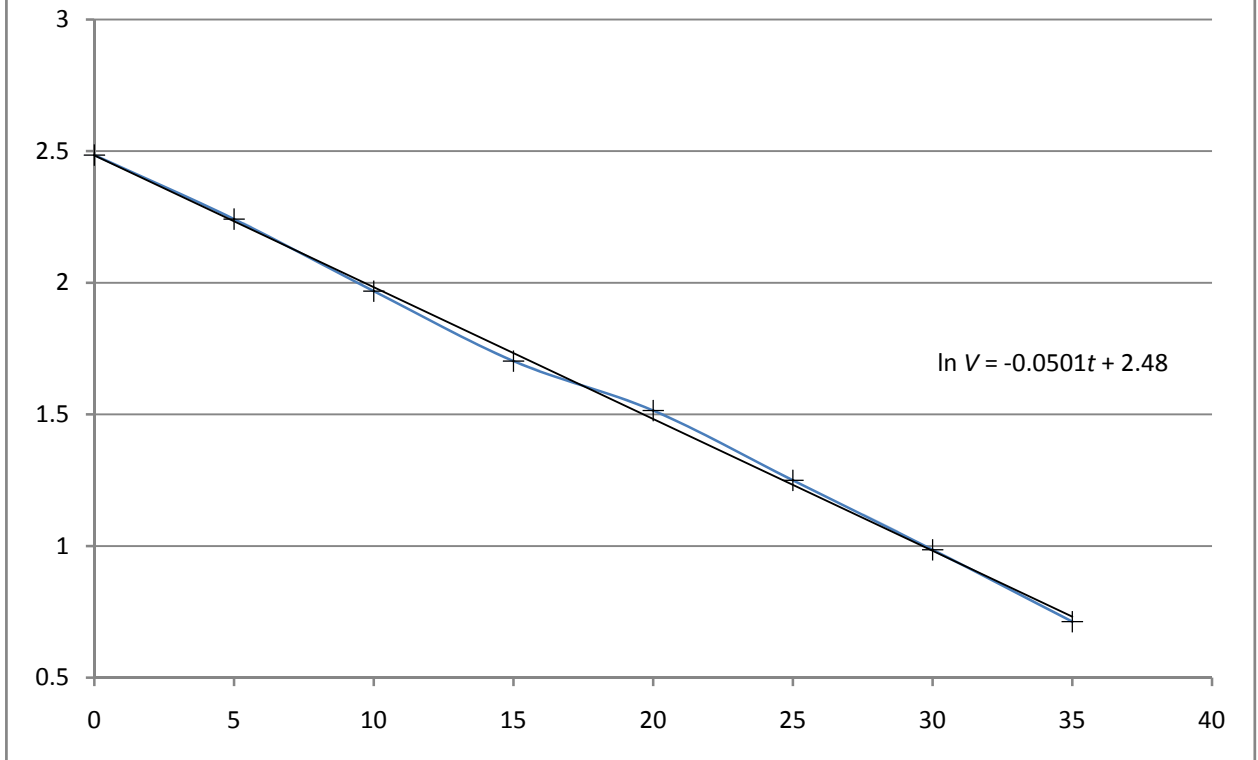


Total for question 3

9

Question Number	Answer	Mark
4 (a) (i)	Answer = 22 s <u>Example of calculation</u> $T = 220 \times 10^3 \Omega \times 100 \times 10^{-6} \text{ F}$	(1) 1
4 (a) (ii)	Time taken for the p.d/charge/current to change by 63% or to fall to 1/e of its original value or to fall to (12/e)V or to fall to 4.41 V	(1) 1
4 (b) (i)	To reduce/prevent charge/current through the voltmeter.	(1) 1
4 (b) (ii)	Precision of stopwatch much less than reaction time or uncertainty significantly less than 22 s.	(1) 1
4 (b) (iii)	Repeat experiment and calculate mean value or use graphical method	(1)
4 (c)	Correct expansion $\ln V = -t/RC + \ln V_0$ Compare with $y = mx + c$ or state that RC is constant	(1) 2
4 (d)	In values correct and to at least 2DP Labels axes with quantity and unit; y-axis must be labelled $\ln (V/V_0)$ Scales, (expect 1cm:0.1 vertically) Points correctly plotted and best straight line	(1) 4
4 (e) (i)	Large triangle (at least half the drawn line) with correct values Correct calculation for T in range $19.8 < T < 20.2$ and at least 3 SF (no unit penalty)	(1) 2
4 (e) (ii)	Uses 22 s and graph value to calculate % difference correctly <u>Example of calculation</u> $(20.0 - 22.0)/22 = 2.0/22 = 9.1\%$	(1) 1
4 (f) (i)	$\ln 5 (=1.609)$ used to find time from graph Value in range 17.4 s – 17.6 s and to 3 SF	(1) 2
4 (f) (ii)	Answer = 150 k Ω (option C) <u>Example of calculation</u> $220 \times (12/17.5) = 150$	(1) 1
Total for question 4		17

Q4 Graph of $\ln V$ against t



t/s	V/V	$\ln(V/V)$
0	12.00	2.48
5	9.41	2.24
10	7.16	1.97
15	5.49	1.70
20	4.55	1.52
25	3.49	1.25
30	2.68	0.99
35	2.04	0.71

Further copies of this publication are available from
International Regional Offices at www.edexcel.com/international

For more information on Edexcel qualifications, please visit
www.edexcel.com

Alternatively, you can contact Customer Services at
www.edexcel.com/ask or on + 44 1204 770 696

Pearson Education Limited. Registered company number 872828
with its registered office at Edinburgh Gate, Harlow, Essex CM20 2JE

Ofqual




Llywodraeth Cynulliad Cymru
Welsh Assembly Government

