

Surname						Other Names					
Centre Number						Candidate Number					
Candidate Signature											

Leave blank

General Certificate of Education
June 2003
Advanced Subsidiary Examination



PHYSICS (SPECIFICATION A) PHA3/W
Unit 3 Current Electricity and Elastic Properties of Solids

Friday 6 June 2003 Afternoon Session

In addition to this paper you will require:

- a calculator;
- a pencil and a ruler.

For Examiner's Use			
Number	Mark	Number	Mark
1			
2			
3			
4			
5			
Total (Column 1)	→		
Total (Column 2)	→		
TOTAL			
Examiner's Initials			

Time allowed: 1 hour

Instructions

- Use blue or black ink or ball-point pen.
- Fill in the boxes at the top of this page.
- Answer **all** questions in the spaces provided. All working must be shown.
- Do all rough work in this book. Cross through any work you do not want marked.

Information

- The maximum mark for this paper is 50.
- Mark allocations are shown in brackets.
- The paper carries 25% of the total marks for Physics Advanced Subsidiary and carries 12½% of the total marks for Physics Advanced.
- A *Data Sheet* is provided on pages 3 and 4. You may wish to detach this perforated sheet at the start of the examination.
- You are expected to use a calculator where appropriate.
- In questions requiring description and explanation you will be assessed on your ability to use an appropriate form and style of writing, to organise relevant information clearly and coherently, and to use specialist vocabulary where appropriate. The degree of legibility of your handwriting and the level of accuracy of your spelling, punctuation and grammar will also be taken into account.

Data Sheet

- A perforated *Data Sheet* is provided as pages 3 and 4 of this question paper.
- This sheet may be useful for answering some of the questions in the examination.
- You may wish to detach this sheet before you begin work.

Fundamental constants and values				Mechanics and Applied Physics		Fields, Waves, Quantum Phenomena	
Quantity	Symbol	Value	Units				
speed of light in vacuo	c	3.00×10^8	m s^{-1}	$v = u + at$		$g = \frac{F}{m}$	
permeability of free space	μ_0	$4\pi \times 10^{-7}$	H m^{-1}	$s = \left(\frac{u+v}{2}\right)t$		$g = -\frac{GM}{r^2}$	
permittivity of free space	ϵ_0	8.85×10^{-12}	F m^{-1}	$s = ut + \frac{at^2}{2}$		$g = -\frac{\Delta V}{\Delta x}$	
charge of electron	e	1.60×10^{-19}	C	$v^2 = u^2 + 2as$		$V = -\frac{GM}{r}$	
the Planck constant	h	6.63×10^{-34}	J s	$F = \frac{\Delta(mv)}{\Delta t}$		$a = -(2\pi f)^2 x$	
gravitational constant	G	6.67×10^{-11}	$\text{N m}^2 \text{kg}^{-2}$	$P = Fv$		$v = \pm 2\pi f \sqrt{A^2 - x^2}$	
the Avogadro constant	N_A	6.02×10^{23}	mol^{-1}	$\text{efficiency} = \frac{\text{power output}}{\text{power input}}$		$x = A \cos 2\pi ft$	
molar gas constant	R	8.31	$\text{J K}^{-1} \text{mol}^{-1}$	$\omega = \frac{v}{r} = 2\pi f$		$T = 2\pi \sqrt{\frac{m}{k}}$	
the Boltzmann constant	k	1.38×10^{-23}	J K^{-1}	$a = \frac{v^2}{r} = r\omega^2$		$T = 2\pi \sqrt{\frac{l}{g}}$	
the Stefan constant	σ	5.67×10^{-8}	$\text{W m}^{-2} \text{K}^{-4}$	$I = \sum mr^2$		$\lambda = \frac{ws}{D}$	
the Wien constant	a	2.90×10^{-3}	m K	$E_k = \frac{1}{2} I\omega^2$		$d \sin \theta = n\lambda$	
electron rest mass	m_e	9.11×10^{-31}	kg	$\omega_2 = \omega_1 + \alpha t$		$\theta \approx \frac{\lambda}{D}$	
(equivalent to $5.5 \times 10^{-4}u$)				$\theta = \omega_1 t + \frac{1}{2} \alpha t^2$		${}^1n_2 = \frac{\sin \theta_1}{\sin \theta_2} = \frac{c_1}{c_2}$	
electron charge/mass ratio	e/m_e	1.76×10^{11}	C kg^{-1}	$\omega_2^2 = \omega_1^2 + 2\alpha\theta$		${}^1n_2 = \frac{n_2}{n_1}$	
proton rest mass	m_p	1.67×10^{-27}	kg	$\theta = \frac{1}{2} (\omega_1 + \omega_2)t$		$\sin \theta_c = \frac{1}{n}$	
(equivalent to 1.00728u)				$T = I\alpha$		$E = hf$	
proton charge/mass ratio	e/m_p	9.58×10^7	C kg^{-1}	$\text{angular momentum} = I\omega$		$hf = \phi + E_k$	
neutron rest mass	m_n	1.67×10^{-27}	kg	$W = T\theta$		$hf = E_1 - E_2$	
(equivalent to 1.00867u)				$P = T\omega$		$\lambda = \frac{h}{p} = \frac{h}{mv}$	
gravitational field strength	g	9.81	N kg^{-1}	$\text{angular impulse} = \text{change of angular momentum} = Tt$		$c = \frac{1}{\sqrt{\mu_0 \epsilon_0}}$	
acceleration due to gravity	g	9.81	m s^{-2}	$\Delta Q = \Delta U + \Delta W$		Electricity	
atomic mass unit	u	1.661×10^{-27}	kg	$\Delta W = p\Delta V$		$\epsilon = \frac{E}{Q}$	
(1u is equivalent to 931.3 MeV)				$pV^\gamma = \text{constant}$		$\epsilon = I(R + r)$	
Fundamental particles				$\text{work done per cycle} = \text{area of loop}$		$\frac{1}{R_T} = \frac{1}{R_1} + \frac{1}{R_2} + \frac{1}{R_3} + \dots$	
<i>Class</i>	<i>Name</i>	<i>Symbol</i>	<i>Rest energy</i>	$\text{input power} = \text{calorific value} \times \text{fuel flow rate}$		$R_T = R_1 + R_2 + R_3 + \dots$	
			/MeV	$\text{indicated power as (area of } p-V \text{ loop)} \times (\text{no. of cycles/s}) \times (\text{no. of cylinders})$		$P = I^2 R$	
photon	photon	γ	0	$\text{friction power} = \text{indicated power} - \text{brake power}$		$E = \frac{F}{Q} = \frac{V}{d}$	
lepton	neutrino	ν_e	0	$\text{efficiency} = \frac{W}{Q_{in}} = \frac{Q_{in} - Q_{out}}{Q_{in}}$		$E = \frac{1}{4\pi\epsilon_0} \frac{Q}{r^2}$	
		ν_μ	0	$\text{maximum possible efficiency} = \frac{T_H - T_C}{T_H}$		$E = \frac{1}{2} QV$	
	electron	e^\pm	0.510999			$F = BIl$	
	muon	μ^\pm	105.659			$F = BQv$	
mesons	pion	π^\pm	139.576			$Q = Q_0 e^{-t/RC}$	
		π^0	134.972			$\Phi = BA$	
	kaon	K^\pm	493.821				
		K^0	497.762				
baryons	proton	p	938.257				
	neutron	n	939.551				
Properties of quarks							
<i>Type</i>	<i>Charge</i>	<i>Baryon number</i>	<i>Strangeness</i>				
u	$+\frac{2}{3}$	$+\frac{1}{3}$	0				
d	$-\frac{1}{3}$	$+\frac{1}{3}$	0				
s	$-\frac{1}{3}$	$+\frac{1}{3}$	-1				
Geometrical equations							
arc length = $r\theta$							
circumference of circle = $2\pi r$							
area of circle = πr^2							
area of cylinder = $2\pi rh$							
volume of cylinder = $\pi r^2 h$							
area of sphere = $4\pi r^2$							
volume of sphere = $\frac{4}{3} \pi r^3$							

$$\text{magnitude of induced e.m.f.} = N \frac{\Delta\Phi}{\Delta t}$$

$$I_{\text{rms}} = \frac{I_0}{\sqrt{2}}$$

$$V_{\text{rms}} = \frac{V_0}{\sqrt{2}}$$

Mechanical and Thermal Properties

$$\text{the Young modulus} = \frac{\text{tensile stress}}{\text{tensile strain}} = \frac{F}{A} \frac{l}{e}$$

$$\text{energy stored} = \frac{1}{2} Fe$$

$$\Delta Q = mc \Delta\theta$$

$$\Delta Q = ml$$

$$pV = \frac{1}{3} Nmc^2$$

$$\frac{1}{2} mc^2 = \frac{3}{2} kT = \frac{3RT}{2N_A}$$

Nuclear Physics and Turning Points in Physics

$$\text{force} = \frac{eV_p}{d}$$

$$\text{force} = Bev$$

$$\text{radius of curvature} = \frac{mv}{Be}$$

$$\frac{eV}{d} = mg$$

$$\text{work done} = eV$$

$$F = 6\pi\eta rv$$

$$I = k \frac{I_0}{x^2}$$

$$\frac{\Delta N}{\Delta t} = -\lambda N$$

$$\lambda = \frac{h}{\sqrt{2meV}}$$

$$N = N_0 e^{-\lambda t}$$

$$T_{\frac{1}{2}} = \frac{\ln 2}{\lambda}$$

$$R = r_0 A^{\frac{1}{3}}$$

$$E = mc^2 = \frac{m_0 c^2}{\left(1 - \frac{v^2}{c^2}\right)^{\frac{1}{2}}}$$

$$l = l_0 \left(1 - \frac{v^2}{c^2}\right)^{\frac{1}{2}}$$

$$t = \frac{t_0}{\left(1 - \frac{v^2}{c^2}\right)^{\frac{1}{2}}}$$

Astrophysics and Medical Physics

Body	Mass/kg	Mean radius/m
Sun	2.00×10^{30}	7.00×10^8
Earth	6.00×10^{24}	6.40×10^6

$$1 \text{ astronomical unit} = 1.50 \times 10^{11} \text{ m}$$

$$1 \text{ parsec} = 206265 \text{ AU} = 3.08 \times 10^{16} \text{ m} = 3.26 \text{ ly}$$

$$1 \text{ light year} = 9.45 \times 10^{15} \text{ m}$$

$$\text{Hubble constant } (H) = 65 \text{ km s}^{-1} \text{ Mpc}^{-1}$$

$$M = \frac{\text{angle subtended by image at eye}}{\text{angle subtended by object at unaided eye}}$$

$$M = \frac{f_o}{f_c}$$

$$m - M = 5 \log \frac{d}{10}$$

$$\lambda_{\text{max}} T = \text{constant} = 0.0029 \text{ m K}$$

$$v = Hd$$

$$P = \sigma AT^4$$

$$\frac{\Delta f}{f} = \frac{v}{c}$$

$$\frac{\Delta \lambda}{\lambda} = -\frac{v}{c}$$

$$R_s \approx \frac{2GM}{c^2}$$

Medical Physics

$$\text{power} = \frac{1}{f}$$

$$\frac{1}{u} + \frac{1}{v} = \frac{1}{f} \text{ and } m = \frac{v}{u}$$

$$\text{intensity level} = 10 \log \frac{I}{I_0}$$

$$I = I_0 e^{-\mu x}$$

$$\mu_m = \frac{\mu}{\rho}$$

Electronics

Resistors

Preferred values for resistors (E24)
Series: 1.0 1.1 1.2 1.3 1.5 1.6 1.8 2.0 2.2
2.4 2.7 3.0 3.3 3.6 3.9 4.3 4.7 5.1 5.6 6.2
6.8 7.5 8.2 9.1 ohms
and multiples that are ten times greater

$$Z = \frac{V_{\text{rms}}}{I_{\text{rms}}}$$

$$\frac{1}{C_T} = \frac{1}{C_1} + \frac{1}{C_2} + \frac{1}{C_3} + \dots$$

$$C_T = C_1 + C_2 + C_3 + \dots$$

$$X_C = \frac{1}{2\pi fC}$$

Alternating Currents

$$f = \frac{1}{T}$$

Operational amplifier

$$G = \frac{V_{\text{out}}}{V_{\text{in}}} \quad \text{voltage gain}$$

$$G = -\frac{R_f}{R_1} \quad \text{inverting}$$

$$G = 1 + \frac{R_f}{R_1} \quad \text{non-inverting}$$

$$V_{\text{out}} = -R_f \left(\frac{V_1}{R_1} + \frac{V_2}{R_2} + \frac{V_3}{R_3} \right) \quad \text{summing}$$

Answer **all** questions.

- 1 Four resistors, each having resistance of $50\ \Omega$, are connected to form a square. A resistance meter measured the resistance between different corners of the square. Determine the resistance the meter records when connected between the following corners.

- (a) Between A and C, as in **Figure 1**.

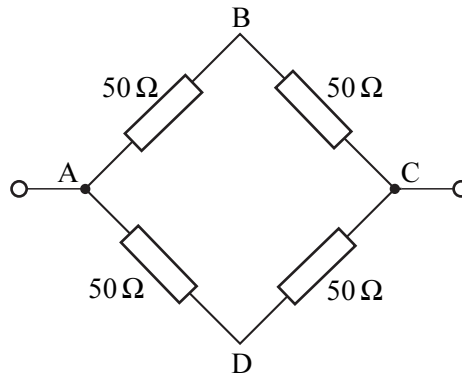


Figure 1

.....

.....

.....

.....

(2 marks)

- (b) Between A and B, as in **Figure 2**.

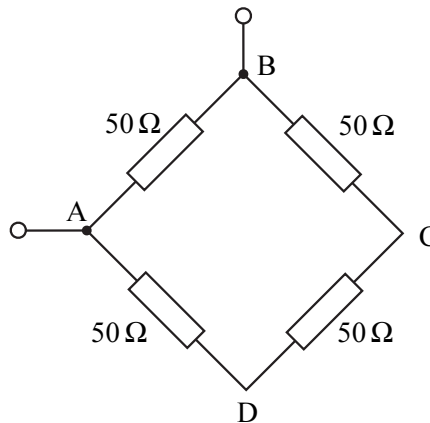


Figure 2

.....

.....

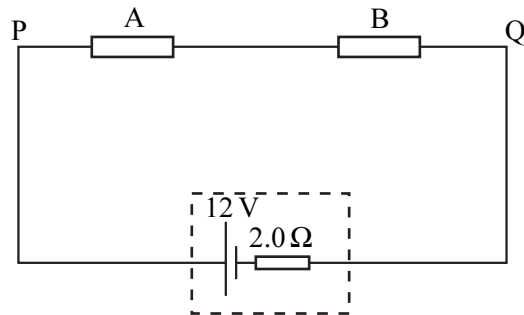
.....

.....

(3 marks)

Turn over ▶

- 2 In the circuit shown, the battery has an emf of 12 V and an internal resistance of 2.0Ω . The resistors A and B each have resistance of 30Ω .



Calculate

- (i) the total current in the circuit,

.....

- (ii) the voltage between the points P and Q,

.....

- (iii) the power dissipated in resistor A,

.....

- (iv) the energy dissipated by resistor A in 20 s.

.....

(8 marks)

8

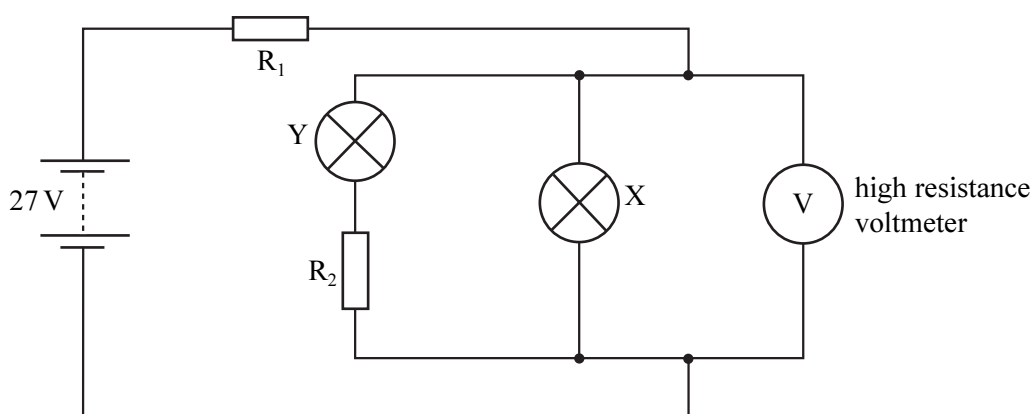
- 3 (a) X and Y are two lamps. X is rated at 12 V, 24 W and Y at 6.0 V, 18 W. Calculate the current through each lamp when it operates at its rated voltage.

X:

Y:

(2 marks)

- (b) The two lamps are connected in the circuit shown. The battery has an emf of 27 V and negligible internal resistance. The resistors R_1 and R_2 are chosen so that the lamps are operating at their rated voltage.



- (i) What is the reading on the voltmeter?

.....

- (ii) Calculate the resistance of R_2 .

.....

.....

.....

- (iii) Calculate the current through R_1 .

.....

- (iv) Calculate the voltage across R_1 .

.....

- (v) Calculate the resistance of R_1 .

.....

(7 marks)

- 4 (a) A student wishes to measure the resistance of a fixed length of uniform constantan wire. The apparatus available includes a battery, a switch, a milliammeter and a voltmeter.

You may be awarded marks for the quality of written communication in your answer.

- (i) Draw a circuit diagram using the apparatus listed above. Include in your diagram an extra piece of apparatus which will enable a range of measurements to be made.

- (ii) State how the student should make the necessary measurements, ensuring that a range of readings is recorded.

.....
.....
.....
.....
.....

- (iii) Describe how the results would be used to determine an accurate value for the resistance of the wire.

.....
.....
.....
.....
.....
.....

(8 marks)

(b) A heating element for an electric fire consists of a single strand of nichrome wire wound around an insulator. The heater is required to produce 1.2 kW when connected to the 230 Vrms ac mains.

(i) Calculate the working resistance of the nichrome wire.

.....
.....
.....
.....

(ii) Calculate the length of nichrome wire required to make the element.

cross-sectional area of the wire = $9.4 \times 10^{-8} \text{ m}^2$
resistivity of nichrome = $1.1 \times 10^{-6} \Omega \text{ m}$

.....
.....
.....
.....

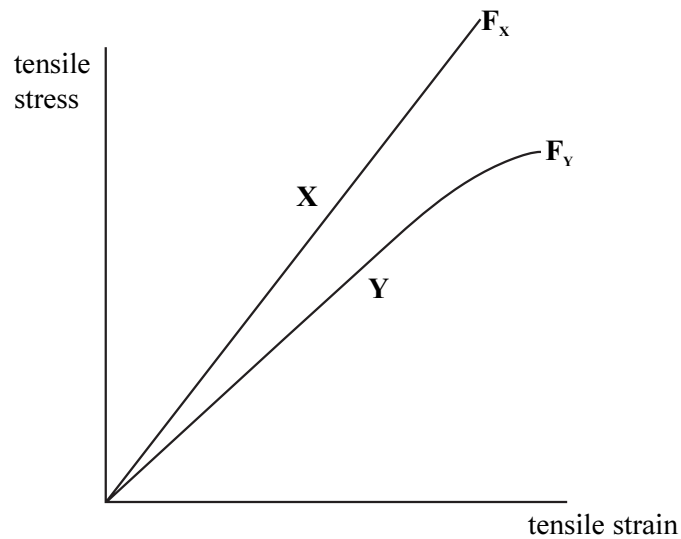
(5 marks)

13

TURN OVER FOR THE NEXT QUESTION

Turn over ▶

- 5 (a) The graph shows the variation of *tensile stress* with *tensile strain* for two wires **X** and **Y**, having the same dimensions, but made of different materials. The materials fracture at the points F_x and F_y respectively.



You may be awarded marks for the quality of written communication provided in your answer to the following questions.

State, with a reason for each, which material, **X** or **Y**,

- (i) obeys Hooke's law up to the point of fracture,

.....

- (ii) is the weaker material,

.....

- (iii) is ductile,

.....

- (iv) has the greater elastic strain energy for a given tensile stress.

.....

(8 marks)

- (b) An elastic cord of unstretched length 160 mm has a cross-sectional area of 0.64 mm^2 . The cord is stretched to a length of 190 mm. Assume that Hooke's law is obeyed for this range and that the cross-sectional area remains constant.

the Young modulus for the material of the cord = $2.0 \times 10^7 \text{ Pa}$

- (i) Calculate the tension in the cord at this extension.

.....
.....
.....
.....
.....

- (ii) Calculate the energy stored in the cord at this extension.

.....
.....
.....
.....

(5 marks)

13

QUALITY OF WRITTEN COMMUNICATION (2 marks)

2

END OF QUESTIONS