



Monday 12 May 2014 – Afternoon

AS GCE MUSIC

G353/01 Introduction to Historical Study in Music

Candidates answer on the Question Paper and on the Insert.

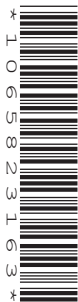
OCR supplied materials:

- Insert (G353/01/I – inserted)
- CD recording

Other materials required:

- Playback facilities with headphones for each individual candidate

Duration: 1 hour 45 minutes
(plus 15 minutes' preparation)



Candidate forename		Candidate surname	
--------------------	--	-------------------	--

Centre number						Candidate number				
---------------	--	--	--	--	--	------------------	--	--	--	--

INSTRUCTIONS TO CANDIDATES

- The Insert can be found inside this document.
- Write your name clearly in capital letters, your centre number and candidate number in the boxes above.
- You will be allowed **15 minutes' preparation** time at the start of the examination. During this time you may listen to the CD and look at the Question Paper and the Insert, but you must not write.
- Write your answers in the space provided on the Question Paper or on the Insert.
- At the end of the examination, fasten the separate Insert securely to the Question Paper.
- Any suitable CD equipment may be used, including personal stereo players of good quality with both fast forward and reverse scan facilities: these should be fitted with fresh batteries if they cannot be powered from the mains electricity supply.

SECTION A [30 marks]: Choose **either** Extract 1A (Questions **1 to 11**)
or Extract 1B (Questions **12 to 25**)

SECTION B [40 marks]: Answer **all** the questions in this section (Questions **26 to 38**)

SECTION C [20 marks]: Answer **one** question from this section (Questions **39 to 41**)

INFORMATION FOR CANDIDATES

- The number of marks is given in brackets [] at the end of each question or part question.
- The total number of marks for this paper is **90**.
- You will be awarded marks for the quality of written communication in your answer in Section C.
- This document consists of **12** pages. Any blank pages are indicated.

For Examiner's Use	
Section A	
Section B	
Section C	
TOTAL	

2
SECTION A

Section A consists of **two** recorded extracts. Scores for both extracts are provided in the Insert.

Choose **either** Extract 1A (Questions **1** to **11**) **or** Extract 1B (Questions **12** to **25**) and answer all the questions on your chosen Extract.

Extract 1A

This extract is part of a movement from a piano sonata by Haydn. The recording consists of **two** passages: **Passage 1i** and **Passage 1ii**.

The Extract is performed at period pitch.

Passage 1i (bar 0² to bar 40) [Ⓢ track 2]

1 What type of cadence occurs at bar 7 to bar 8a? [1]

- Imperfect**
- Interrupted**
- Perfect**
- Plagal**

2 To what key has the music modulated at bar 8a?
..... [1]

3 **On the score** mark in the dynamic indication *f* at the appropriate point in the section from bar 8b to bar 20a. [1]

4 The following chords are used in the section from bar 11 to bar 19:

- **I (D)**
- **Ic (D/A)**
- **IVb (G/B)**
- **V (A)**
- **V7b (A7/C#)**

On the score indicate where these chords occur by writing in the boxes provided. [5]

5 Comment on the **harmony** and **tonality** of the section from bar 20b to bar 28a. Refer to specific bars in your answer and to chords, cadences and tonal relationships.

.....
.....
.....
.....
..... [4]

6 Describe how the 5-note melodic motif **X** (bar 20b to bar 22¹) is used in the section from bar 20b to bar 40.

.....
.....
.....
..... [4]

7 **On the score** complete the lower stave line from bar 31 to bar 33. The rhythm of this passage is indicated above the stave. [4]

8 Describe the piano **textures** used in **Passage 1i**. Refer to bar numbers in your answer.

.....
.....
.....
..... [4]

Passage 1ii (Bar 42 to bar 71) [Ⓞ track 3]

9 **On the score** complete the right-hand melody line in bar 46 and bar 47. The rhythm of this passage is indicated above the stave. [3]

10 What type of figuration is heard in the bass part in the section from bar 50 to bar 56?

..... [1]

11 Describe the **structure** of **Passage 1i**.

.....

.....

..... [2]

Extract 1B

This extract consists of **two** passages (**Passage 1i** and **Passage 1ii**) from Christopher Gunning's theme music for the television series *Poirot*.

Passage 1i (Bar 1 to bar 33¹) [Ⓞ track 4]

12 Identify the instrument that plays the main melody in **Passage 1i**.

..... [1]

13 The printed melody is decorated at several points in the recorded performance. In the table below identify the ornaments heard at each of the points in the passage. [2]

<i>Bar/beat</i>	<i>Note</i>	<i>Ornament heard</i>
6 ¹	A	
10 ³	A	

14 **On the score** complete the melody from bar 7 to bar 8³. The rhythm of this passage is indicated above the stave. [4]

15 What device is heard in the melody in the section from bar 13 to bar 16³?

..... [1]

16 The following chords are used in the section from bar 14 to bar 17:

- **C7**
- **Cm**
- **Fm**
- **G7/F**

On the score indicate where these chords occur by writing in the boxes provided. [4]

17 The main theme returns at bar 20⁴. Describe how the music of the **accompaniment** in this section is different from the accompaniment of bar 4⁴ to bar 12³.

.....

 [3]

18 From bar 29 the piano right hand plays continuous quavers. What is the interval between each note? [1]

Major 3rd

Perfect 4th

Perfect 5th

Octave

Passage 1ii (Bar 34 to bar 49) [Ⓢ track 5]

19 Explain how the melody of bar 36 and bar 37 differs from the melody heard in bar 7 and bar 8.

.....
.....
..... [2]

20 Describe the music of the piano accompaniment in the section from bar 34 to bar 41. Give specific details in your answer.

.....
.....
.....
..... [3]

21 What type of cadence occurs at bar 41 to bar 42? [1]

Imperfect

Interrupted

Perfect

Plagal

22 Which of the following patterns is played by the piano in bar 42 and bar 43? (Tick **one** box). [1]

A 

B 

C 

D 

23 What device is heard in the bass in bars 46 and 47?

..... [2]

24 What ideas from **Passage 1i** return in the accompaniment of bar 48 and bar 49?

.....

 [2]

25 Compare the structure of **Passage 1ii** with that of **Passage 1i**.

.....

 [3]

SECTION B

Answer **all** the questions in this section (Questions **26** to **38**).

Extract 2

The Insert contains a full score of **Extract 2** which is part of one of the prescribed sections from Handel's *Water Music Suite no. 2 in D, HWV349*.

Two recordings of the extract from **different** performances are provided on the CD: **Extract 2A** (Ⓢ track **6**) and **Extract 2B** (Ⓢ track **7**). No CD timings for these recordings are given in the score.

26 Explain the following terms or signs as they are used in the printed extract:

(a) *tr* (bar 10):

..... [1]

(b) da capo (bar 35):

..... [1]

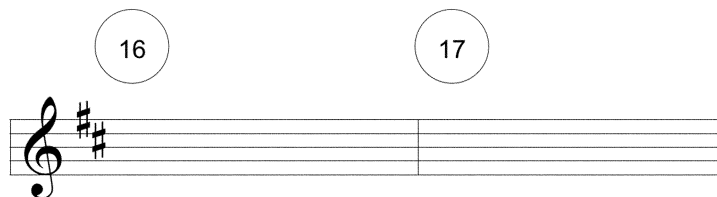
27 (a) What rhythmic effect is evident in the oboe parts in bar 6 and bar 9?

..... [1]

(b) Give the number of one other bar in the extract where this rhythmic effect recurs.

Bar: [1]

28 On the blank stave below, write out the viola part in bar 16 and bar 17, using the treble clef provided. [3]



29 Describe Handel's use of harmony and tonality in the section from bar 33 to bar 35. Refer to key and chords in your answer.

.....
.....
.....
.....
..... [4]

Extract 3 [⊙ track 8]

There is no score for **Extract 3**.

This extract is part of *Hotter than that* performed by Louis Armstrong and His Hot Five.

33 Identify the vocal style used by Louis Armstrong throughout this extract.
..... [1]

34 Describe in detail the treatment of the main melody in this extract.
.....
.....
.....
.....
.....
..... [5]

35 Describe briefly the music of the accompaniment.
.....
.....
..... [3]

36 Describe the music that **immediately** follows the recorded extract.
.....
.....
.....
..... [4]

37 Give the month in which this recording was made.
..... [1]

38 What company was responsible for issuing the original recording of this performance?
..... [1]



Copyright Information

OCR is committed to seeking permission to reproduce all third-party content that it uses in its assessment materials. OCR has attempted to identify and contact all copyright holders whose work is used in this paper. To avoid the issue of disclosure of answer-related information to candidates, all copyright acknowledgements are reproduced in the OCR Copyright Acknowledgements Booklet. This is produced for each series of examinations and is freely available to download from our public website (www.ocr.org.uk) after the live examination series. If OCR has unwittingly failed to correctly acknowledge or clear any third-party content in this assessment material, OCR will be happy to correct its mistake at the earliest possible opportunity.

For queries or further information please contact the Copyright Team, First Floor, 9 Hills Road, Cambridge CB2 1GE.

OCR is part of the Cambridge Assessment Group; Cambridge Assessment is the brand name of University of Cambridge Local Examinations Syndicate (UCLES), which is itself a department of the University of Cambridge.