

Write your name here

Surname

Other names

Pearson
Edexcel GCE

Centre Number

--	--	--	--	--

Candidate Number

--	--	--	--

Music

Advanced Subsidiary

Unit 3: Developing Musical Understanding

Monday 23 May 2016 – Morning

Time: 2 hours plus 5 minutes reading time

(Candidates should be given the reading time at the start of the examination, after which the CD should be started.)

Paper Reference

6MU03/01

You must have:

CD, CD player and keyboard(s)

Skeleton Score Booklet for Questions 1, 2 and 4 (enclosed)

Total Marks

--

Instructions

- Use **black** ink or ball-point pen. You may use pencil for rough work on Question 5.
- **Fill in the boxes** at the top of this page with your name, centre number and candidate number.
- Answer **all** of Part A, **either** (a) or (b) from Part B, and **all** of Part C.
- Answer the questions in the spaces provided
– *there may be more space than you need.*

Information

- The total mark for this paper is 80.
- The marks for **each** question are shown in brackets
– *use this as a guide as to how much time to spend on each question.*
- The music for **Part A** will be played to you on a CD. When the announcement on the CD concludes Part A, you should then complete Parts B and C.
- The quality of your written communication will be assessed
– *you should take particular care with your spelling, punctuation and grammar, as well as the clarity of expression.*

Advice

- Read each question carefully before you start to answer it.
- Try to answer every question.
- Check your answers if you have time at the end.

Turn over ►

P46571A

©2016 Pearson Education Ltd.

1/1/1/1/1/1/1/1/1



PEARSON

Some questions must be answered with a cross in a box ☒. If you change your mind about an answer, put a line through the box ☒ and then mark your new answer with a cross ☒.

PART A: LISTENING

Answer both questions.

The music for both questions in Part A will be played to you **five** times.
The playings will be separated by pauses and the length of each pause will be announced.
Skeleton scores of the music can be found in the skeleton score booklet.

1 INSTRUMENTAL MUSIC

You will hear an excerpt from *Concerto for Double String Orchestra: movement I* by Tippett. A skeleton score of this excerpt is provided in the skeleton score booklet. Bar numbers in the questions relate to the skeleton score.

(a) Put a cross in the box next to the correct answer.

The instrumentation for each of the orchestras is:

(1)

- A** Violin I, Violin II, Viola
- B** Violin I, Violin II, Viola, Cello
- C** Violin I, Violin II, Viola, Cello, Double Bass
- D** Violin I, Violin II, Viola, Cello, Harpsichord

(b) Bars 1 to 4 of the skeleton score show Violin I. What is the interval heard between this part and Violin II?

(1)

(c) Give **three** ways in which the opening four-note motif is used in bars 8 to 12.

(3)

1

2

3

(d) Explain why the conductor is instructed to 'Beat 3' in bar 15.

(1)



(e) Which **two** instruments share the melody in bars 22 to 30?

(2)

1

2

(f) Give **two** ways in which the opening four-note motif is used as an accompaniment in bars 21 to 30.

(2)

1

2

(g) Give **two** comments on the dynamics in this excerpt.

(2)

1

2

(h) Tippett was influenced by music from the Renaissance and Baroque periods.

Give **three** ways in which this excerpt suggests these influences.

(3)

1

2

3

(i) Put a cross in the box next to the correct answer.

The tempo of this excerpt is:

(1)

- A** Allegro con brio
- B** Andante con moto
- C** Moderato
- D** Presto

(Total for Question 1 = 16 marks)



2 VOCAL MUSIC

You will hear an excerpt from *Locus Iste* by Bruckner. A skeleton score of this excerpt is provided in the skeleton score booklet. Bar numbers in the questions relate to the skeleton score.

(a) Put a cross in the box next to the correct answer.

The structure of this piece is:

(1)

- A** Binary
- B** Strophic
- C** Ternary
- D** Verse and chorus

(b) Give **two** ways in which bars 5 and 6 are similar to bars 1 and 2.

(2)

1

2

(c) In bars 1 to 20, which voice part is sometimes independent of the others?

(1)

.....

(d) Name the key and cadence in bars 15 to 16.

(2)

Key

Cadence

(e) Identify **four** textural features from bar 21 to the end of the excerpt.

(4)

1

2

3

4



(f) Name **one** feature of the harmony in bars 21 to 25.

(1)

(g) Name the **two** chords in bar 29 (on the word 'est').

(2)

Bar 29 (beat 1)

Bar 29 (beat 2)

(h) The excerpt begins quietly.

Complete the box below to identify **two** dynamic changes in bars 1 to 12.

(2)

Bar	Change
Bar	Change

(i) Put a cross in the box next to the correct answer.

Locus Iste is:

(1)

- A** an aria
- B** a madrigal
- C** a mass
- D** a motet

(Total for Question 2 = 16 marks)

TOTAL FOR PART A = 32 MARKS



PART B: INVESTIGATING MUSICAL STYLES

You must answer EITHER (a) INSTRUMENTAL MUSIC OR (b) VOCAL MUSIC.

You must answer both part (i) and part (ii) of the question you choose.

EITHER

3 (a) INSTRUMENTAL MUSIC

- (i) Describe the stylistic features of *Partita No. 4 in D, BWV 828: Sarabande and Gigue* by Bach which show that this music was composed in the Baroque period. (10)
- (ii) Compare and contrast the melody and structure of *String Quartet in E flat, Op. 33 No. 2, 'The Joke': movement IV* by Haydn and *Quartet Op. 22: movement I* by Webern. (18)

OR

(b) VOCAL MUSIC

- (i) Describe the stylistic features of *You can get it if you really want* by Jimmy Cliff which show that this music is an example of Rock Steady. (10)
- (ii) Compare and contrast the melody and structure of *Don't look back in anger* by Oasis and *Summertime* by Gershwin. (18)

DO NOT WRITE IN THIS AREA

DO NOT WRITE IN THIS AREA

DO NOT WRITE IN THIS AREA



DO NOT WRITE IN THIS AREA

DO NOT WRITE IN THIS AREA

DO NOT WRITE IN THIS AREA

Indicate which question you are answering by marking a cross . If you change your mind, put a line through the box and then indicate your new question with a cross .

If you answer part (a) put a cross in the box .

If you answer part (b) put a cross in the box .

Area with horizontal dotted lines for writing answers.



DO NOT WRITE IN THIS AREA

DO NOT WRITE IN THIS AREA

DO NOT WRITE IN THIS AREA

Handwriting practice area with 20 horizontal dotted lines.



DO NOT WRITE IN THIS AREA

DO NOT WRITE IN THIS AREA

DO NOT WRITE IN THIS AREA

Handwriting practice area with 20 horizontal dotted lines.



DO NOT WRITE IN THIS AREA

DO NOT WRITE IN THIS AREA

DO NOT WRITE IN THIS AREA

Handwriting practice area with 20 horizontal dotted lines.



DO NOT WRITE IN THIS AREA

DO NOT WRITE IN THIS AREA

DO NOT WRITE IN THIS AREA

Handwriting practice area with 15 horizontal dotted lines.

(Total for Question 3 (a) or (b) = 28 marks)

TOTAL FOR PART B = 28 MARKS



P 4 6 5 7 1 A 0 1 1 1 6

PART C: UNDERSTANDING CHORDS AND LINES

Answer both questions.

4 Study the printed music for this question in the skeleton score booklet and answer all the questions that follow.

(a) Complete the table below to give a harmonic analysis of bars 4 to 6. Precisely indicate, using Roman numerals, the chords that are used.

(4)

Bar 4	I
Bar 5	
Bar 6, beats 1 to 2	
Bar 6, beat 3	
Bar 6, beat 4	

(b) Name the harmonic device in the bass in bars 13 to 15, beat 1.

(1)

(c) Name the key and cadence in bars 16 to 17.

(2)

Key

Cadence

(d) Put a cross in the box next to the correct answer.

The note F in the vocal part at the end of bar 10 is:

(1)

- A** an anticipation
- B** an appoggiatura
- C** a passing note
- D** a suspension

(Total for Question 4 = 8 marks)

DO NOT WRITE IN THIS AREA

DO NOT WRITE IN THIS AREA

DO NOT WRITE IN THIS AREA



DO NOT WRITE IN THIS AREA

DO NOT WRITE IN THIS AREA

DO NOT WRITE IN THIS AREA

BLANK PAGE
QUESTION 5 BEGINS ON THE NEXT PAGE.



- 5 Complete the music below for SATB voices in short score choosing suitable chords. Some credit will be given for the appropriate use of non-harmonic notes. Some space for rough work is given opposite but you must write your answer on the score.

(12)

(Total for Question 5 = 12 marks)

TOTAL FOR PART C = 20 MARKS
TOTAL FOR PAPER = 80 MARKS

DO NOT WRITE IN THIS AREA

DO NOT WRITE IN THIS AREA

DO NOT WRITE IN THIS AREA

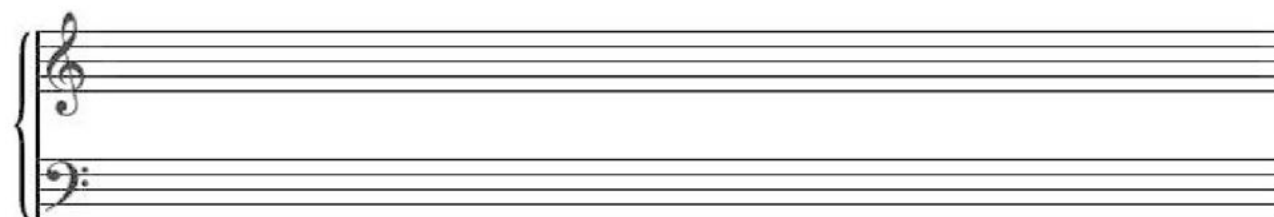
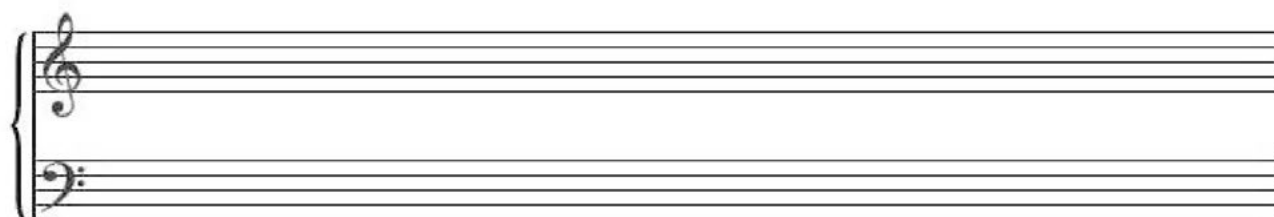
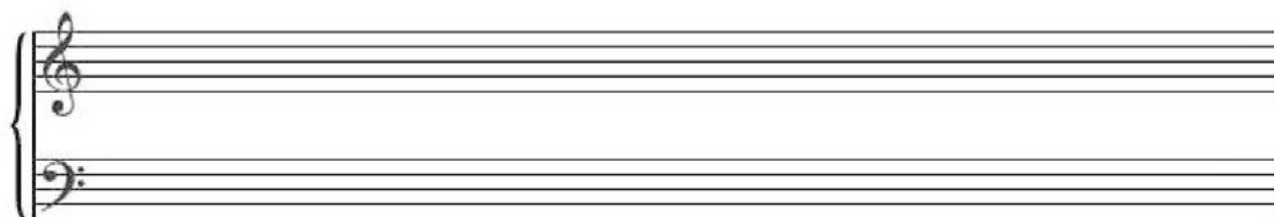
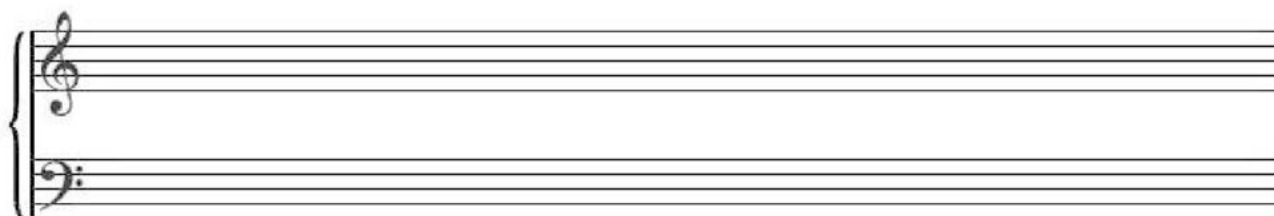
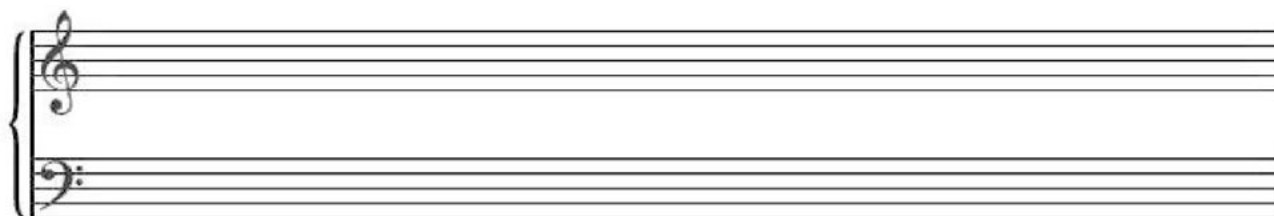
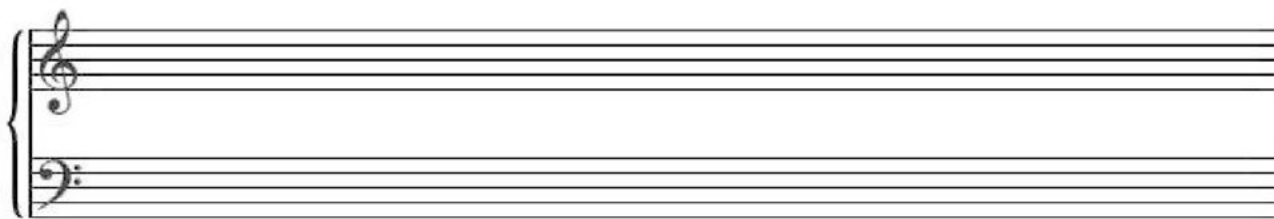


DO NOT WRITE IN THIS AREA

DO NOT WRITE IN THIS AREA

DO NOT WRITE IN THIS AREA

Rough work



P 4 6 5 7 1 A 0 1 5 1 6

DO NOT WRITE IN THIS AREA

DO NOT WRITE IN THIS AREA

DO NOT WRITE IN THIS AREA

BLANK PAGE

