

(C1-4.4a) Name:

Homework Questions 4 – Sketching Curves to Find Intersections

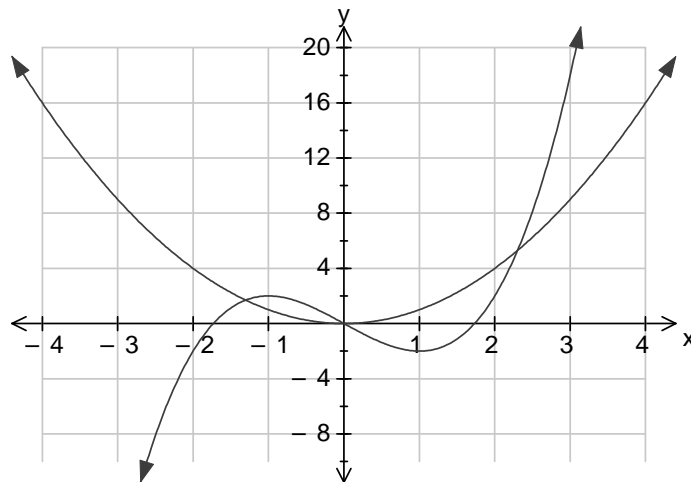
- Plot the following pairs of graphs on the axis below
- State the number of points of intersection
- Write down a suitable equation which would give the x coordinates of the point of Intersection
- Find the x coordinates of the points of intersection

a) $y = x^2$ $y = x(x^2 - 3)$

3 points of intersections

$$0 = x^3 - x^2 - 3x$$

$$X=0, -1.30, 2.3$$

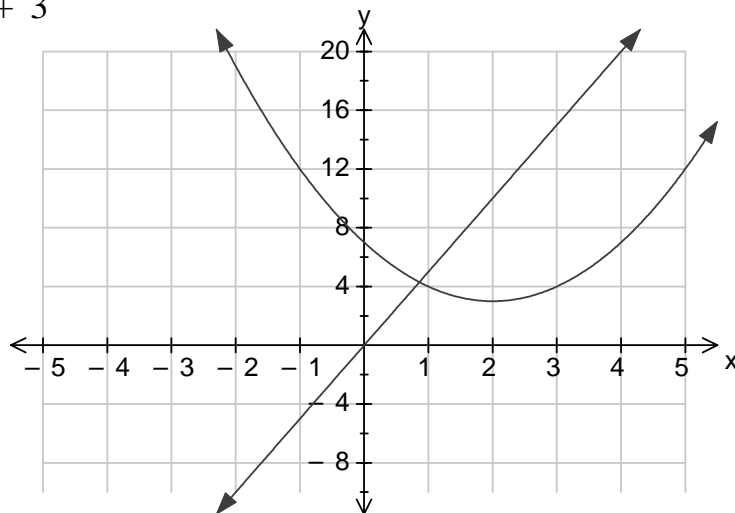


b) $y = 5x$ $y = (x - 2)^2 + 3$

1 point of intersection

$$x^2 + x + 7 = 0$$

$$X= 8.14, 0.86$$



c) $y = \frac{4}{x}$ $y = x - 3$

2 points of intersection

$$0 = x^2 - 3x - 4$$

$$X= -1, 4$$

