

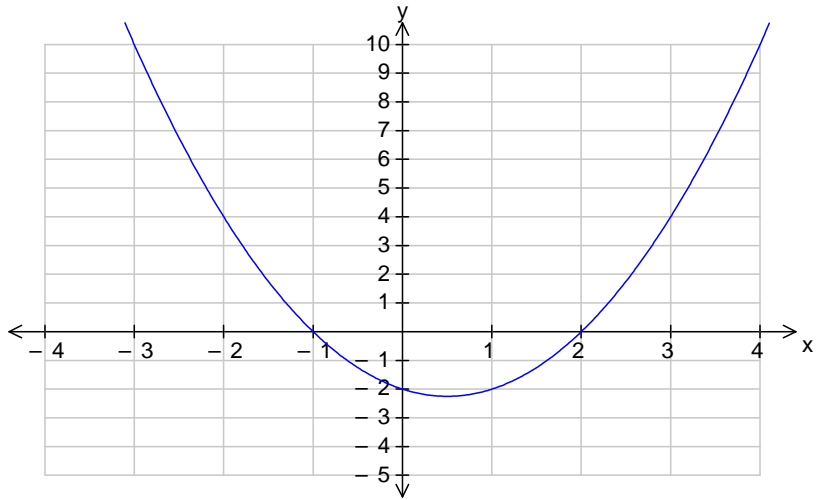
(C1-3.5a) Name:

Homework Questions 5 – Solving Quadratic Inequalities by Sketching

Find the set of values of x which satisfy the following inequalities and then sketch the graphs

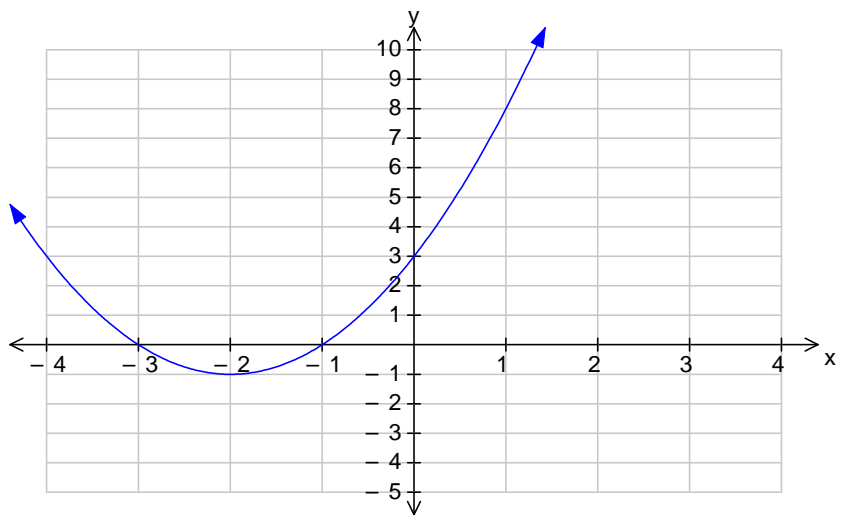
1. $x^2 - x - 2 > 0$

$$-1 > x > 2$$



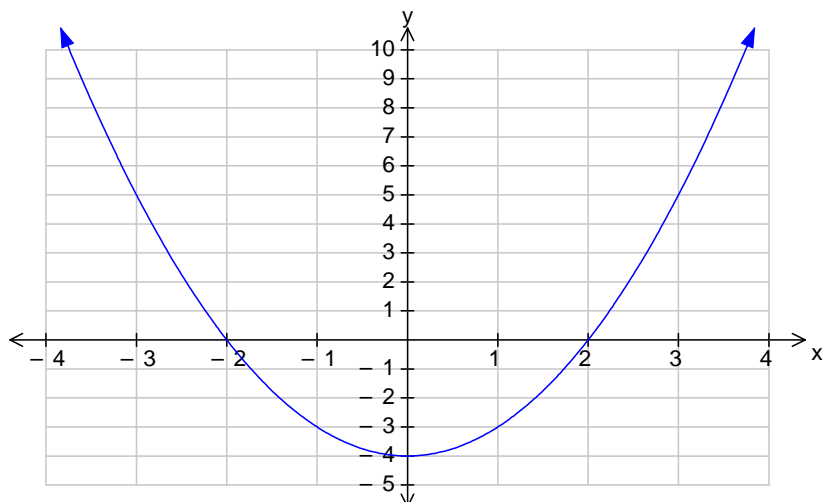
2. $x^2 + 4x + 3 > 0$

$$-3 > x > -1$$



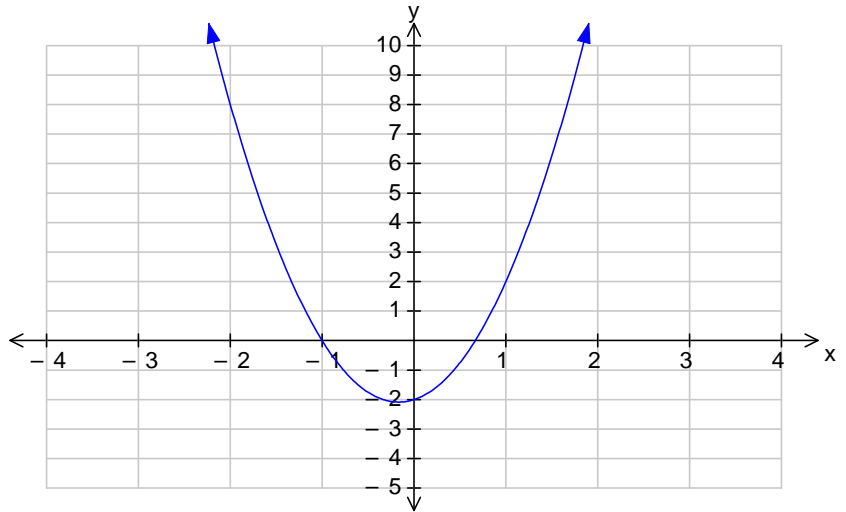
3. $x^2 - 4 < 0$

$$-2 < x < 2$$



4. $3x^2 < 2 - x$

$$-1 < x < \frac{2}{3}$$



5. $3x^2 \geq 2 - 5x$

$$-2 \geq x \geq \frac{1}{3}$$

