

Please check the examination details below before entering your candidate information

Candidate surname

Other names

**Pearson Edexcel  
Level 3 GCE**

Centre Number

--	--	--	--	--

Candidate Number

--	--	--	--	--

**Wednesday 14 October 2020**

Afternoon (Time: 2 hours)

Paper Reference **9MA0/02**

**Mathematics**

**Advanced**

**Paper 2: Pure Mathematics 2**

**You must have:**

Mathematical Formulae and Statistical Tables (Green), calculator

Total Marks

--

**Candidates may use any calculator allowed by Pearson regulations. Calculators must not have the facility for symbolic algebra manipulation, differentiation and integration, or have retrievable mathematical formulae stored in them.**

### Instructions

- Use **black** ink or ball-point pen.
- If pencil is used for diagrams/sketches/graphs it must be dark (HB or B).
- **Fill in the boxes** at the top of this page with your name, centre number and candidate number.
- Answer **all** questions and ensure that your answers to parts of questions are clearly labelled.
- Answer the questions in the spaces provided  
– *there may be more space than you need.*
- You should show sufficient working to make your methods clear. Answers without working may not gain full credit.
- Inexact answers should be given to three significant figures unless otherwise stated.

### Information

- A booklet 'Mathematical Formulae and Statistical Tables' is provided.
- There are 16 questions in this question paper. The total mark for this paper is 100.
- The marks for each question are shown in brackets  
– *use this as a guide as to how much time to spend on each question.*

### Advice

- Read each question carefully before you start to answer it.
- Try to answer every question.
- Check your answers if you have time at the end.

Turn over ►

P66786A

©2020 Pearson Education Ltd.

1/1/1/1/1/1/



Pearson

- 1 The table below shows corresponding values of  $x$  and  $y$  for  $y = \sqrt{\frac{x}{1+x}}$

The values of  $y$  are given to 4 significant figures.

$x$	0.5	1	1.5	2	2.5
$y$	0.5774	0.7071	0.7746	0.8165	0.8452

- (a) Use the trapezium rule, with all the values of  $y$  in the table, to find an estimate for

$$\int_{0.5}^{2.5} \sqrt{\frac{x}{1+x}} \, dx$$

giving your answer to 3 significant figures.

(3)

- (b) Using your answer to part (a), deduce an estimate for  $\int_{0.5}^{2.5} \sqrt{\frac{9x}{1+x}} \, dx$

(1)

Given that

$$\int_{0.5}^{2.5} \sqrt{\frac{9x}{1+x}} \, dx = 4.535 \text{ to 4 significant figures}$$

- (c) comment on the accuracy of your answer to part (b).

(1)









DO NOT WRITE IN THIS AREA

3. (a) Given that

$$2\log(4 - x) = \log(x + 8)$$

show that

$$x^2 - 9x + 8 = 0$$

(3)

(b) (i) Write down the roots of the equation

$$x^2 - 9x + 8 = 0$$

(ii) State which of the roots in (b)(i) is **not** a solution of

$$2\log(4 - x) = \log(x + 8)$$

giving a reason for your answer.

(2)

---

---

---

---

---

---

---

---

---

---

---

---

---

---

---

---

---

---

---

---

---

---

---

---





4. In the binomial expansion of

$$(a + 2x)^7 \quad \text{where } a \text{ is a constant}$$

the coefficient of  $x^4$  is 15 120

Find the value of  $a$ .

(3)

DO NOT WRITE IN THIS AREA

DO NOT WRITE IN THIS AREA

DO NOT WRITE IN THIS AREA







5. The curve with equation  $y = 3 \times 2^x$  meets the curve with equation  $y = 15 - 2^{x+1}$  at the point  $P$ .  
Find, using algebra, the exact  $x$  coordinate of  $P$ .

(4)

DO NOT WRITE IN THIS AREA

DO NOT WRITE IN THIS AREA

DO NOT WRITE IN THIS AREA



Question 5 continued

DO NOT WRITE IN THIS AREA

DO NOT WRITE IN THIS AREA

DO NOT WRITE IN THIS AREA

(Total for Question 5 is 4 marks)



P 6 6 7 8 6 A 0 1 1 5 2

6. (a) Given that

$$\frac{x^2 + 8x - 3}{x + 2} \equiv Ax + B + \frac{C}{x + 2} \quad x \in \mathbb{R} \quad x \neq -2$$

find the values of the constants  $A$ ,  $B$  and  $C$

(3)

(b) Hence, using algebraic integration, find the exact value of

$$\int_0^6 \frac{x^2 + 8x - 3}{x + 2} dx$$

giving your answer in the form  $a + b \ln 2$  where  $a$  and  $b$  are integers to be found.

(4)

---

---

---

---

---

---

---

---

---

---

---

---

---

---

---

---

---

---

---

---

---

---

---

---





Question 6 continued

DO NOT WRITE IN THIS AREA

DO NOT WRITE IN THIS AREA

DO NOT WRITE IN THIS AREA



Question 6 continued

DO NOT WRITE IN THIS AREA

DO NOT WRITE IN THIS AREA

DO NOT WRITE IN THIS AREA

Horizontal lines for writing

(Total for Question 6 is 7 marks)



7.

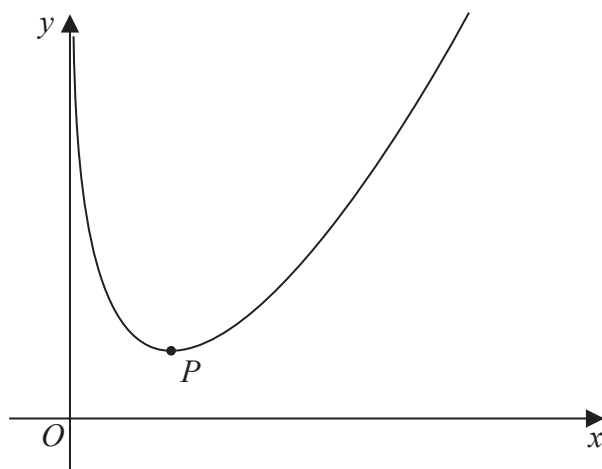


Figure 1

Figure 1 shows a sketch of the curve  $C$  with equation

$$y = \frac{4x^2 + x}{2\sqrt{x}} - 4 \ln x \quad x > 0$$

(a) Show that

$$\frac{dy}{dx} = \frac{12x^2 + x - 16\sqrt{x}}{4x\sqrt{x}} \quad (4)$$

The point  $P$ , shown in Figure 1, is the minimum turning point on  $C$ .

(b) Show that the  $x$  coordinate of  $P$  is a solution of

$$x = \left( \frac{4}{3} - \frac{\sqrt{x}}{12} \right)^{\frac{2}{3}} \quad (3)$$

(c) Use the iteration formula

$$x_{n+1} = \left( \frac{4}{3} - \frac{\sqrt{x_n}}{12} \right)^{\frac{2}{3}} \quad \text{with } x_1 = 2$$

to find (i) the value of  $x_2$  to 5 decimal places,

(ii) the  $x$  coordinate of  $P$  to 5 decimal places.

(3)





**Question 7 continued**

DO NOT WRITE IN THIS AREA

DO NOT WRITE IN THIS AREA

DO NOT WRITE IN THIS AREA







8. A curve  $C$  has equation  $y = f(x)$

Given that

- $f'(x) = 6x^2 + ax - 23$  where  $a$  is a constant
- the  $y$  intercept of  $C$  is  $-12$
- $(x + 4)$  is a factor of  $f(x)$

find, in simplest form,  $f(x)$

**(6)**

DO NOT WRITE IN THIS AREA

DO NOT WRITE IN THIS AREA

DO NOT WRITE IN THIS AREA







Question 8 continued

DO NOT WRITE IN THIS AREA

DO NOT WRITE IN THIS AREA

DO NOT WRITE IN THIS AREA

Lined writing area for the answer.

(Total for Question 8 is 6 marks)



P 6 6 7 8 6 A 0 2 3 5 2

9. A quantity of ethanol was heated until it reached boiling point.

The temperature of the ethanol,  $\theta^\circ\text{C}$ , at time  $t$  seconds after heating began, is modelled by the equation

$$\theta = A - Be^{-0.07t}$$

where  $A$  and  $B$  are positive constants.

Given that

- the initial temperature of the ethanol was  $18^\circ\text{C}$
- after 10 seconds the temperature of the ethanol was  $44^\circ\text{C}$

(a) find a complete equation for the model, giving the values of  $A$  and  $B$  to 3 significant figures.

**(4)**

Ethanol has a boiling point of approximately  $78^\circ\text{C}$

(b) Use this information to evaluate the model.

**(2)**

---

---

---

---

---

---

---

---

---

---

---

---

---

---

---

---

---

---

---

---

---

---

---

---

---





**Question 9 continued**

DO NOT WRITE IN THIS AREA

DO NOT WRITE IN THIS AREA

DO NOT WRITE IN THIS AREA

Lined writing area for the answer to Question 9.

**(Total for Question 9 is 6 marks)**



P 6 6 7 8 6 A 0 2 5 5 2





**Question 10 continued**

Lined writing area for the answer to Question 10.

DO NOT WRITE IN THIS AREA

DO NOT WRITE IN THIS AREA

DO NOT WRITE IN THIS AREA





11.

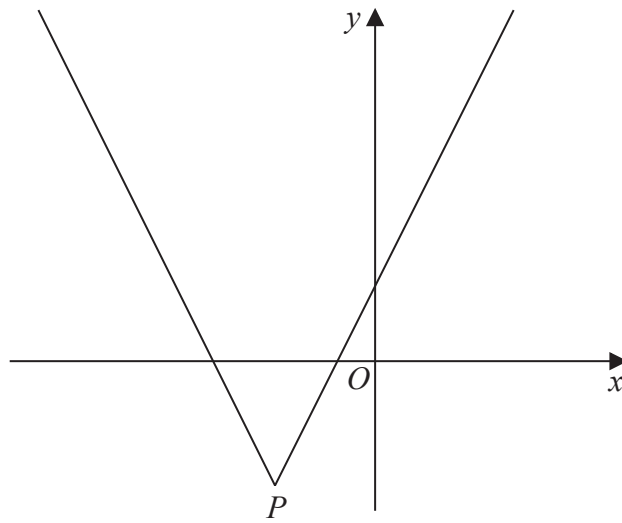


Figure 2

Figure 2 shows a sketch of the graph with equation

$$y = 2|x + 4| - 5$$

The vertex of the graph is at the point  $P$ , shown in Figure 2.

(a) Find the coordinates of  $P$ .

(2)

(b) Solve the equation

$$3x + 40 = 2|x + 4| - 5$$

(2)

A line  $l$  has equation  $y = ax$ , where  $a$  is a constant.

Given that  $l$  intersects  $y = 2|x + 4| - 5$  at least once,

(c) find the range of possible values of  $a$ , writing your answer in set notation.

(3)

---



---



---



---



---



---



---



---



---



---



---



---



**Question 11 continued**

DO NOT WRITE IN THIS AREA

DO NOT WRITE IN THIS AREA

DO NOT WRITE IN THIS AREA

Lined writing area for the answer to Question 11.







**Question 11 continued**

DO NOT WRITE IN THIS AREA

DO NOT WRITE IN THIS AREA

DO NOT WRITE IN THIS AREA

Lined area for writing the answer to Question 11.

(Total for Question 11 is 7 marks)



P 6 6 7 8 6 A 0 3 3 5 2

12.

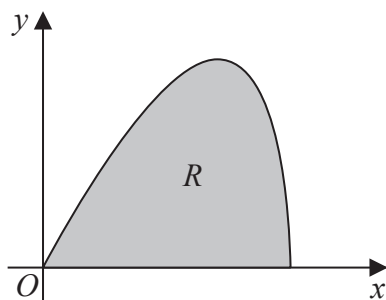


Figure 3

The curve shown in Figure 3 has parametric equations

$$x = 6 \sin t \quad y = 5 \sin 2t \quad 0 \leq t \leq \frac{\pi}{2}$$

The region  $R$ , shown shaded in Figure 3, is bounded by the curve and the  $x$ -axis.

(a) (i) Show that the area of  $R$  is given by  $\int_0^{\frac{\pi}{2}} 60 \sin t \cos^2 t \, dt$  (3)

(ii) Hence show, by algebraic integration, that the area of  $R$  is exactly 20 (3)

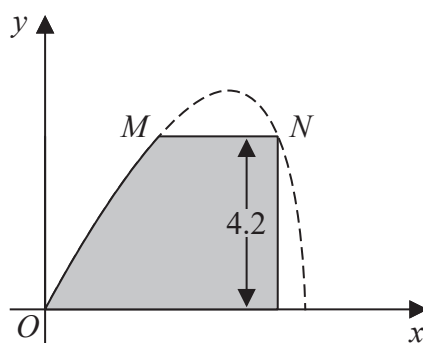


Figure 4

Part of the curve is used to model the profile of a small dam, shown shaded in Figure 4. Using the model and given that

- $x$  and  $y$  are in metres
- the vertical wall of the dam is 4.2 metres high
- there is a horizontal walkway of width  $MN$  along the top of the dam

(b) calculate the width of the walkway. (5)



Question 12 continued

DO NOT WRITE IN THIS AREA

DO NOT WRITE IN THIS AREA

DO NOT WRITE IN THIS AREA

Lined writing area for the answer to Question 12.



P 6 6 7 8 6 A 0 3 5 5 2

**Question 12 continued**

DO NOT WRITE IN THIS AREA

DO NOT WRITE IN THIS AREA

DO NOT WRITE IN THIS AREA



**Question 12 continued**

DO NOT WRITE IN THIS AREA

DO NOT WRITE IN THIS AREA

DO NOT WRITE IN THIS AREA

(Total for Question 12 is 11 marks)



P 6 6 7 8 6 A 0 3 7 5 2

13. The function  $g$  is defined by

$$g(x) = \frac{3 \ln(x) - 7}{\ln(x) - 2} \quad x > 0 \quad x \neq k$$

where  $k$  is a constant.

(a) Deduce the value of  $k$ .

(1)

(b) Prove that

$$g'(x) > 0$$

for all values of  $x$  in the domain of  $g$ .

(3)

(c) Find the range of values of  $a$  for which

$$g(a) > 0$$

(2)



Question 13 continued

Lined writing area for the answer to Question 13.

DO NOT WRITE IN THIS AREA

DO NOT WRITE IN THIS AREA

DO NOT WRITE IN THIS AREA



P 6 6 7 8 6 A 0 3 9 5 2

**Question 13 continued**

DO NOT WRITE IN THIS AREA

DO NOT WRITE IN THIS AREA

DO NOT WRITE IN THIS AREA





**Question 13 continued**

**DO NOT WRITE IN THIS AREA**

**DO NOT WRITE IN THIS AREA**

**DO NOT WRITE IN THIS AREA**

**(Total for Question 13 is 6 marks)**



14. A circle  $C$  with radius  $r$

- lies only in the 1st quadrant
- touches the  $x$ -axis and touches the  $y$ -axis

The line  $l$  has equation  $2x + y = 12$

(a) Show that the  $x$  coordinates of the points of intersection of  $l$  with  $C$  satisfy

$$5x^2 + (2r - 48)x + (r^2 - 24r + 144) = 0 \tag{3}$$

Given also that  $l$  is a tangent to  $C$ ,

(b) find the two possible values of  $r$ , giving your answers as fully simplified surds. (4)

---

---

---

---

---

---

---

---

---

---

---

---

---

---

---

---

---

---

---

---

---

---

---

---

---

---

---

---

---

---



Question 14 continued

DO NOT WRITE IN THIS AREA

DO NOT WRITE IN THIS AREA

DO NOT WRITE IN THIS AREA















Question 15 continued

DO NOT WRITE IN THIS AREA

DO NOT WRITE IN THIS AREA

DO NOT WRITE IN THIS AREA

Lined writing area for the answer to Question 15.

(Total for Question 15 is 8 marks)



16. Use algebra to prove that the square of any natural number is **either** a multiple of 3 **or** one more than a multiple of 3

(4)

DO NOT WRITE IN THIS AREA

DO NOT WRITE IN THIS AREA

DO NOT WRITE IN THIS AREA



Question 16 continued

DO NOT WRITE IN THIS AREA

DO NOT WRITE IN THIS AREA

DO NOT WRITE IN THIS AREA

Lined area for writing.



**Question 16 continued**

Lined writing area for Question 16 continued.

DO NOT WRITE IN THIS AREA

DO NOT WRITE IN THIS AREA

DO NOT WRITE IN THIS AREA

**(Total for Question 16 is 4 marks)**

**TOTAL FOR PAPER IS 100 MARKS**

