

General Certificate of Education
January 2005
Advanced Subsidiary Examination



**MATHEMATICS AND STATISTICS
(SPECIFICATION B)
Unit Pure 3**

MBP3

Thursday 27 January 2005 Afternoon Session

In addition to this paper you will require:

- a 12-page answer book;
- an insert for use in Question 5 (enclosed);
- a ruler;
- the AQA booklet of formulae and statistical tables.

You may use a standard scientific calculator **only**.

Time allowed: 1 hour 45 minutes

Instructions

- Use blue or black ink or ball-point pen. Pencil should only be used for drawing.
- Write the information required on the front of your answer book. The *Examining Body* for this paper is AQA. The *Paper Reference* is MBP3.
- Answer **all** questions.
- All necessary working should be shown; otherwise marks for method may be lost.
- The **final** answer to questions requiring the use of tables or calculators should normally be given to three significant figures.
- Fill in the boxes at the top of the insert. Make sure that you attach this insert to your answer book.

Information

- The maximum mark for this paper is 80.
- Mark allocations are shown in brackets.

Advice

- Unless stated otherwise, formulae may be quoted, without proof, from the booklet.

Answer **all** questions.

- 1 (a) The complex number z has modulus $3\sqrt{2}$ and argument $\frac{3\pi}{4}$.

Express z in the form $a + bi$, where a and b are integers. (2 marks)

- (b) Given that $w = -1 + i\sqrt{3}$, show that:

(i) $w^2 + 2w$ is real; (2 marks)

(ii) $w - \frac{4}{w}$ is purely imaginary. (3 marks)

- 2 Solve the inequality $\frac{3x + 1}{3 - x} > 2$. (4 marks)

- 3 The matrix \mathbf{M} is $\begin{bmatrix} 0 & -1 \\ 1 & 0 \end{bmatrix}$.

- (a) Find:

(i) \mathbf{M}^2 ;

(ii) \mathbf{M}^4 . (3 marks)

- (b) The transformation \mathbf{T} is given by

$$\begin{bmatrix} x' \\ y' \end{bmatrix} = \mathbf{M} \begin{bmatrix} x \\ y \end{bmatrix}$$

Describe fully the geometrical transformation represented by \mathbf{T} . (2 marks)

- (c) A reflection in the y -axis is given by

$$\begin{bmatrix} x' \\ y' \end{bmatrix} = \mathbf{N} \begin{bmatrix} x \\ y \end{bmatrix}$$

Find the matrix \mathbf{N} . (2 marks)

4 The roots of the quadratic equation $2x^2 - 4x + 1 = 0$ are α and β .

(a) Without solving the equation:

(i) write down the value of $\alpha + \beta$ and the value of $\alpha\beta$; (2 marks)

(ii) find the value of $\alpha^2 + \beta^2$; (2 marks)

(iii) hence find the value of $(\alpha + 3)^2 + (\beta + 3)^2$. (2 marks)

(b) Determine a quadratic equation with integer coefficients which has roots $\frac{\alpha + 3}{\beta + 3}$ and $\frac{\beta + 3}{\alpha + 3}$. (4 marks)

5 [An insert is provided for use in this question.]

The variables x and y satisfy a relationship of the form $y = a \times b^x$, where a and b are constants.

Measurements of y for given values of x are shown in the table.

x	0.1	0.2	0.3	0.4	0.5
y	3.09	3.53	4.03	4.61	5.26

(a) Express $\ln y$ in terms of $\ln a$, $\ln b$ and x . (1 mark)

(b) (i) Complete the table on the insert, giving values of $\ln y$ to 3 decimal places, and plot $\ln y$ against x on the axes provided. (3 marks)

(ii) Draw a suitable straight line to illustrate the relationship between the data. (1 mark)

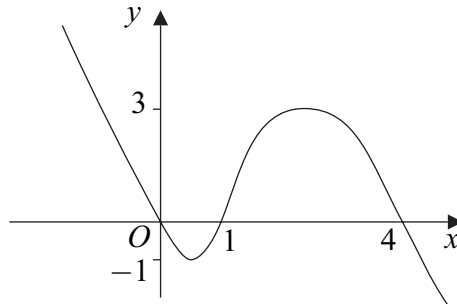
(c) Hence estimate:

(i) the value of y when $x = 0.34$, giving your answer to 3 significant figures; (2 marks)

(ii) the values of a and b , giving your answers to 2 significant figures. (4 marks)

Turn over ►

6 The graph of $y = f(x)$ is sketched below.



(a) Sketch the graph of $y = |f(x)|$. (2 marks)

(b) Sketch the graph of $y = \frac{1}{f(x)}$ and state the equations of its asymptotes. (5 marks)

7 Part of the Cayley table for the set $S = \{1, 3, 5, k, 11, 13\}$ under multiplication modulo 14 is given below. For example, $3 \times 11 = 33 \equiv 5 \pmod{14}$.

	1	3	5	k	11	13
1	1	3	5		11	13
3	3		1		5	a
5	5	1	11		13	b
k						
11	11	5	13			c
13	13					d

The set S is closed under multiplication modulo 14.

(a) Find the values of a , b , c and d in the column headed 13. (2 marks)

(b) State the value of k . (1 mark)

(c) Given that the identity element is 1, find the inverse of 3. (1 mark)

(d) Find a solution of the congruence $13x \equiv 3 \pmod{14}$. (1 mark)

(e) Using the value of k found in part (b), show that $k^2 \equiv k + 2 \pmod{14}$. (2 marks)

- 8 (a) (i) Describe the geometrical transformation that maps the circle with equation

$$x^2 + y^2 = 4$$

onto the circle with equation $(x - 2)^2 + y^2 = 4$. (2 marks)

- (ii) Show that the circle with cartesian equation $(x - 2)^2 + y^2 = 4$ has equation $r = 4 \cos \theta$, where $[r, \theta]$ are polar coordinates. (4 marks)

- (b) For the curve with equation $r = 8 \cos^2 \theta$, where $[r, \theta]$ are polar coordinates:

(i) state the greatest and least values of r ; (2 marks)

(ii) sketch its graph. (3 marks)

- (c) The curve with equation $r = 8 \cos^2 \theta$ intersects the circle with equation $r = 4 \cos \theta$ at the pole and at the points P and Q . Find the polar coordinates of P and Q , giving the values of θ in terms of π . (4 marks)

- 9 (a) Prove by mathematical induction that, for all positive integers n ,

$$\sum_{r=1}^n 4(r+1)(r+2)(r+3) = (n+1)(n+2)(n+3)(n+4) - 24 \quad (6 \text{ marks})$$

- (b) (i) Show that

$$\frac{1}{(r+1)(r+2)} - \frac{1}{(r+2)(r+3)} = \frac{2}{(r+1)(r+2)(r+3)} \quad (1 \text{ mark})$$

- (ii) Use the method of differences to prove that

$$\sum_{r=1}^n \frac{2}{(r+1)(r+2)(r+3)} = A - \frac{1}{(n+2)(n+3)}$$

and state the value of the constant A . (4 marks)

- (iii) Hence find $\sum_{r=1}^{\infty} \frac{2}{(r+1)(r+2)(r+3)}$. (1 mark)

END OF QUESTIONS

Surname						Other Names					
Centre Number						Candidate Number					
Candidate Signature											

General Certificate of Education
 January 2005
 Advanced Subsidiary Examination



**MATHEMATICS AND STATISTICS
 (SPECIFICATION B)
 Unit Pure 3**

MBP3

Thursday 27 January 2005 Afternoon Session

Insert for use in Question 5.

Fill in the boxes at the top of this page.

Attach this insert securely to your answer book.

TURN OVER

Turn over ►

x	0.1	0.2	0.3	0.4	0.5
y	3.09	3.53	4.03	4.61	5.26
$\ln y$					

