

---

**INFORMATION TECHNOLOGY**

**9626/02**

Paper 2 Practical

**February/March 2017**

**2 hours 30 minutes**

Additional Materials: Candidate Source Files

---

**READ THESE INSTRUCTIONS FIRST**

DO **NOT** WRITE IN ANY BARCODES.

Carry out **every** instruction in each task.

Save your work using the file name given in the task as and when instructed.

The number of marks is given in brackets [ ] at the end of each task or part task.

Any businesses described in this paper are entirely fictitious.

You must **not** have access to either the internet or any email system during this examination.

---

This document consists of **5** printed pages and **3** blank pages.

You work for Turtleweek Conservation and are going to prepare a short introductory video to help this organisation gather funds. It will contain one consistent animation style throughout the video. It will be shown to guests at the Tawara Wildlife Trust's gala dinner on the 18th December 2017. The original clips were filmed by DiveGBR on Casablanca reef, Cozumel, Mexico.

You have been supplied with the following source files:

**173auction.csv**

**173bidder.csv**

**173charity.csv**

**173Logo1.png**

**173sound.mp3**

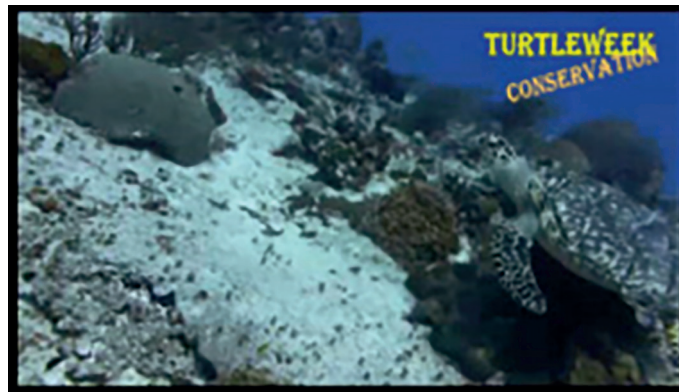
**173t1.mp4**

**173t2.mp4**

**173turtle1.png**

**173turtle2.jpg**

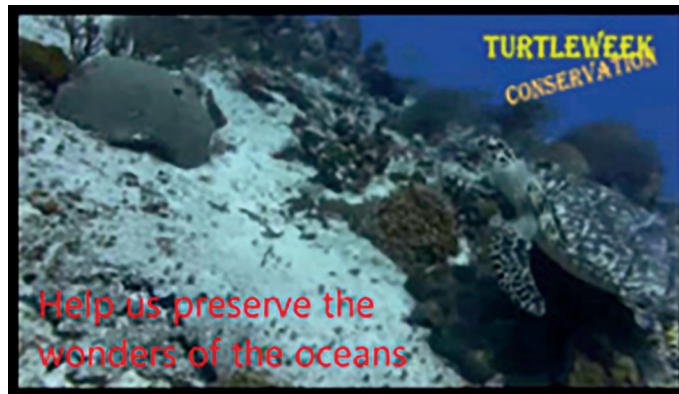
- 1 Open and examine the file **173t1.mp4** and set the image ratio to 16:9. Remove the soundtrack from the clip. Trim the clip so that only the first 8 or 9 seconds remain and the diver is not visible. [3]
- 2 Create a title with the image **173turtle1.png** in the background and the Turtleweek logo in the top right of the screen. Like this:



Display it for 5 seconds. Place this title at the start of your video.

[4]

- 3 Extend the title for a further 6 seconds to add the text **Help us preserve the wonders of the oceans** in a red sans-serif font like this:



Select and add an effect to place this text. [7]

- 4 Create a caption using the image **173turtle2.jpg** to create an appropriate background image and display it for 7 seconds. Place this at the end of the video.

Place 3 lines of the caption text to the right of the turtle, identifying the:

- organisation to be presented to
- event
- date of the presentation.

Select a different effect to the one used in step 3 for the caption. [10]

- 5 Place the file **173t2.mp4** after the captions. Remove the soundtrack from the clip. [3]
- 6 Take a snapshot of the final frame from the video and use this to create a background image for a final 7-second credits clip.

Add appropriate credits to the video. [8]

7 **Evidence 1**

Export your video in wmv format with the filename **TWT\_1\_** followed by your Centre number\_candidate number.

[2]

- 8 Open and examine the file **173sound.mp3** in appropriate editing software. Remove the end of the clip so that only 51 seconds remain. [2]

- 9 Edit this file so that it has an appropriate fade in and fade out. [4]

10 **Evidence 2**

Save this audio clip as **173sound2.mp3**

[1]

- 11 Add this soundtrack to your video so that they start and finish at the same time. [1]

**12 Evidence 3**

Export your video in wmv format with the filename **TWT\_2\_** followed by your Centre number\_candidate number.

[1]

**13 Evidence 4**

Export or convert your video into mp4 format with the filename **TWT\_3\_** followed by your Centre number\_candidate number.

[2]

*The last fundraising event was an auction run by three different charities. Data was collected about this auction and stored in a number of spreadsheet files.*

*All documents must fit on a single portrait page wide when printed on A4 paper with text at least 12 points high. Display all currency values in dollars with 2 decimal places. All documents must be of a professional standard and produced using the most efficient methods.*

**14** Using suitable spreadsheet software, open and examine the data in the files:

**173auction.csv**

**173bidder.csv**

**173charity.csv**

In the most appropriate file, create a footer containing the text **Auction item winners - last edited by:** followed by your name, Centre number and candidate number. [2]

**15** Insert a new column after the *Charity* column. In cell C3 use a function to look up the charity name. Insert an appropriate label in C2. [8]

**16** Insert a formula in cell F3 that uses the most appropriate file to look up the name of the auction winner and display it in the format **Surname: Forename** [8]

**17** Replicate the functions entered in questions 15 and 16 for all auction lots. [1]

**18** Apply appropriate formatting to the spreadsheet. [4]

**Evidence 5**

Save your spreadsheet as **Auction1\_** followed by your Centre number\_candidate number.

*A list of all the auction winners will be created to show how much each winner has donated to each charity for the items that they have won.*

**19** Create a pivot table to display the amount due by each person to each charity, total amount due for each person and the amount raised by each charity from this event. [11]

**Evidence 6**

Save your pivot table as **Auction2\_** followed by your Centre number\_candidate number.

- 20 Extract from the pivot table, only the people who donated to all three charities with a total of more than \$20,000. [6]

**Evidence 7**

Show evidence of your method in a new document saved as **Evidence\_** followed by your Centre number\_candidate number.

**Evidence 8**

Save your pivot table extract as **Auction3\_** followed by your Centre number\_candidate number.

- 21 Evaluate the efficiency of your spreadsheet solution using no more than 150 words. [6]

**Evidence 9**

Place your evaluation in your Evidence Document.

- 22 Identify another application that may be used for these tasks and describe the efficiency of its features using no more than 150 words. [5]

**Evidence 10**

Place your answer in your Evidence Document.

- 23 Create the most appropriate graph or chart to compare the percentage income for each charity from the event. Ensure your chart is suitable for inclusion in a black and white publication.

**Evidence 11**

Place a copy of this graph or chart in your Evidence Document.

[5]

- 24 A worker for one of the charities states "People attending events usually donate to one or two charities but not all three".

Create the most appropriate graph or chart to prove or disprove this statement.

[6]

**Evidence 12**

Place a copy of this graph or chart in your Evidence Document.  
Save your Evidence Document.





**BLANK PAGE**

---

Permission to reproduce items where third-party owned material protected by copyright is included has been sought and cleared where possible. Every reasonable effort has been made by the publisher (UCLES) to trace copyright holders, but if any items requiring clearance have unwittingly been included, the publisher will be pleased to make amends at the earliest possible opportunity.

To avoid the issue of disclosure of answer-related information to candidates, all copyright acknowledgements are reproduced online in the Cambridge International Examinations Copyright Acknowledgements Booklet. This is produced for each series of examinations and is freely available to download at [www.cie.org.uk](http://www.cie.org.uk) after the live examination series.

Cambridge International Examinations is part of the Cambridge Assessment Group. Cambridge Assessment is the brand name of University of Cambridge Local Examinations Syndicate (UCLES), which is itself a department of the University of Cambridge.