

General Certificate of Education
June 2004
Advanced Subsidiary Examination



INFORMATION AND COMMUNICATION TECHNOLOGY ICT2
Unit 2 Information: Management and Manipulation

Friday 11 June 2004 Afternoon Session

In addition to this paper you will require:

- a loose insert;
- a 12-page answer book.

Time allowed: 1 hour 30 minutes

Instructions

- Use a blue or black ink or ball-point pen. Use pencil only for drawing.
- Write the information required on the front of your answer book. The *Examining Body* for this paper is AQA. The *Paper Reference* is ICT2.
- Answer **all** questions.

Information

- The maximum mark for this paper is 60.
- Mark allocations are shown in brackets.
- The use of brand names in your answers will **not** gain credit.
- You are reminded of the need for good English and clear presentation in your answers.

Answer **all** questions.

- 1 Name **two** types of processing that can be used with a computer system. *(2 marks)*
(One word answers are acceptable for this question.)
- 2 A report is to be produced using a word-processing package. The report is divided into several sections. Each section starts with a heading and finishes with a brief conclusion.
- (a) State **two** features of the word-processing package that could be used to ensure that the headings stand out. *(2 marks)*
- (b) State **two** features of the word-processing package that could be used to ensure that the final paragraphs containing the conclusions stand out. These features must be different from those stated in (a). *(2 marks)*
- 3 A student is working on an ICT project using the computers at her school and her own computer at home. Describe a suitable backup procedure that the student could use. *(4 marks)*
- 4 Describe, using examples, **two** types of validation check that could be used by a piece of software to ensure that a date is reasonable. *(6 marks)*
- 5 State **three** different forms that data can take, and illustrate your answer with an example of each. *(6 marks)*
- 6 A large company stores its payroll records in one flat file system, and its departmental staff records in another flat file system. The company has decided to merge both systems into one relational database. Describe **three** advantages of using the new relational database instead of the old flat file systems. *(6 marks)*
- 7 An Examination Board has decided to use Optical Character Recognition (OCR) software to convert candidates' examination scripts into an electronic format. Examiners will then receive and mark scripts electronically.
- (a) Describe **two** advantages to the examiner of receiving and marking scripts in this way. *(4 marks)*
- (b) Describe **two** disadvantages to the Examination Board of converting scripts in this way and sending them to the examiners. *(4 marks)*

-
- 8 A new computer system is sold with a printer, scanner and software. The software includes an operating system, drivers for the printer and the scanner, and an integrated package.
- (a) State **four** functions of the operating system. *(4 marks)*
 - (b) Explain why the peripheral drivers are also needed. *(2 marks)*
 - (c) State **three** advantages of using an integrated package rather than separate applications packages. *(3 marks)*
- 9 A graphics design company uses a Local Area Network (LAN). The designers can use their computers “stand alone” or as part of the network. The LAN has a star topology.
- (a) Draw a diagram of the LAN and give **one** advantage of using a star topology. *(3 marks)*
 - (b) Describe **one** advantage to the designers of using their computers in “stand alone” mode. *(2 marks)*
 - (c) Describe **one** advantage to the designers of working on the network. *(2 marks)*
 - (d) The Log In screen (**Figure 1**) and the Desktop (**Figure 2**) are shown on the loose insert provided with this question paper.
 - (i) Explain why both a username and a password are needed in **Figure 1**. *(2 marks)*
 - (ii) After logging in to the network, the desktop screen appears as shown in **Figure 2**.
Describe **three** ways in which this screen provides an effective human/computer interface. *(6 marks)*

END OF QUESTIONS

THERE ARE NO QUESTIONS PRINTED ON THIS PAGE

General Certificate of Education
June 2004
Advanced Subsidiary Examination



INFORMATION AND COMMUNICATION TECHNOLOGY ICT2
Unit 2 Information: Management and Manipulation

Friday 11 June 2004 Afternoon Session

Figure 1 and Figure 2 for use in answering Question 9.

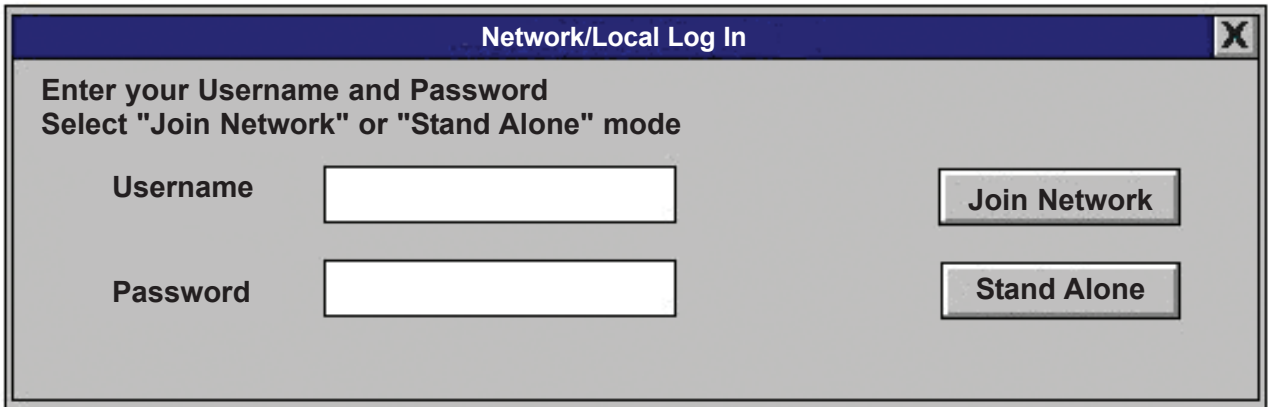


Figure 1

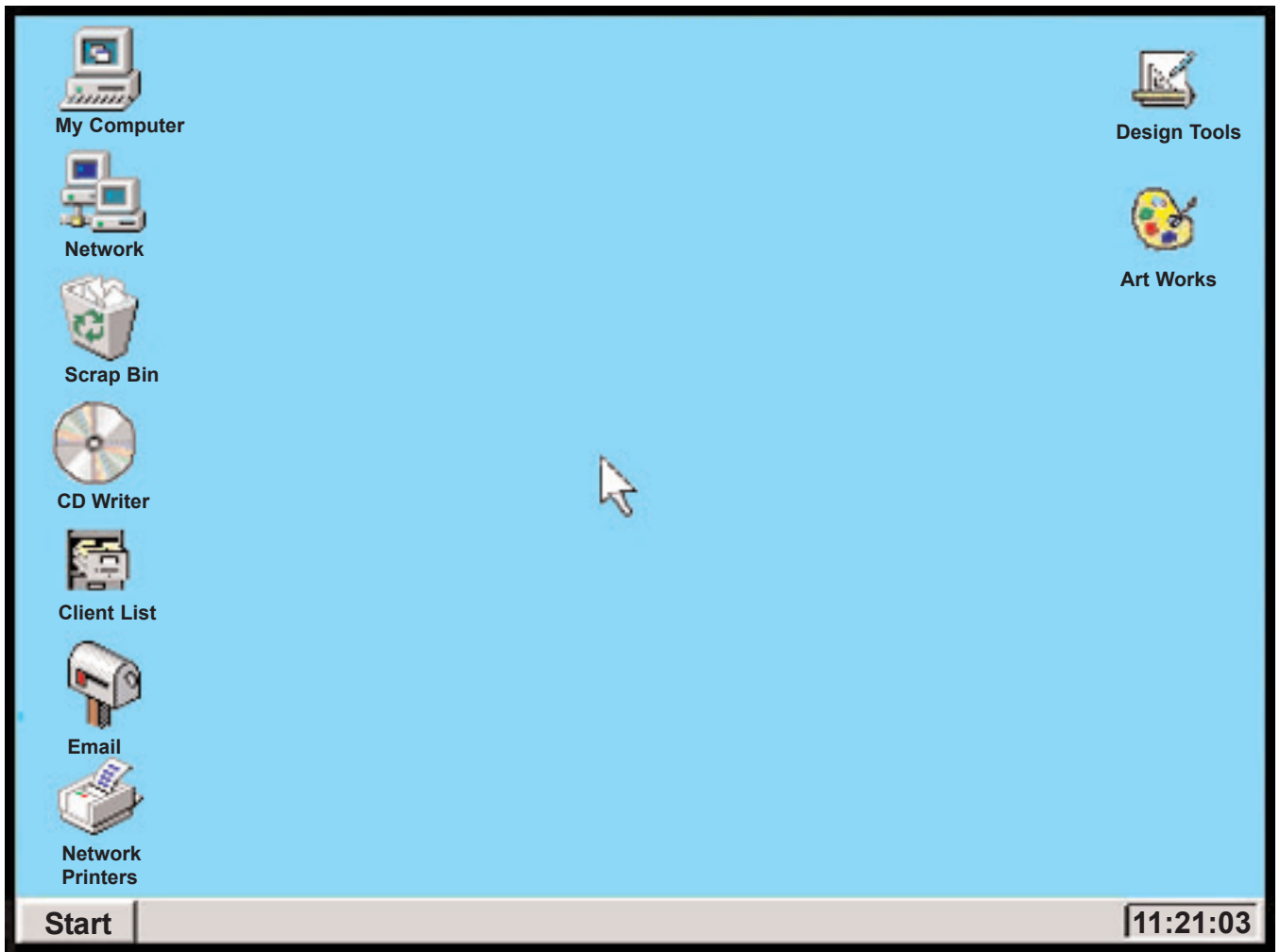


Figure 2