



**GCSE**

**4321/02**

**HUMANITIES**

**UNIT 1: Patterns and Places**

**A.M. THURSDAY, 16 June 2016**

**1 hour plus your additional time allowance**

**Surname** \_\_\_\_\_

**Other Names** \_\_\_\_\_

**Centre Number** \_\_\_\_\_

**Candidate Number** 0 \_\_\_\_\_

<b>For Examiner's use only</b>			
	<b>Question</b>	<b>Maximum Mark</b>	<b>Mark Awarded</b>
<b>Section A</b>	<b>1.</b>	<b>30</b>	
<b>Section B</b>	<b>2. or 3.</b>	<b>20</b>	
	<b>Total</b>	<b>50</b>	

**INSTRUCTIONS TO CANDIDATES**

**Use black ink or black ball-point pen or your usual method.**

**Write your name, centre number and candidate number in the spaces provided on the front cover.**

**Answer Question 1 (Section A) AND EITHER Question 2 OR Question 3 (Section B).**

**Write your answers in the spaces provided in this booklet. Use supplementary sheets when there is insufficient room in this booklet. Write your name at the top of each supplementary sheet, indicating clearly the number of the question you answer. Put the supplementary sheets inside this booklet.**

## **INFORMATION FOR CANDIDATES**

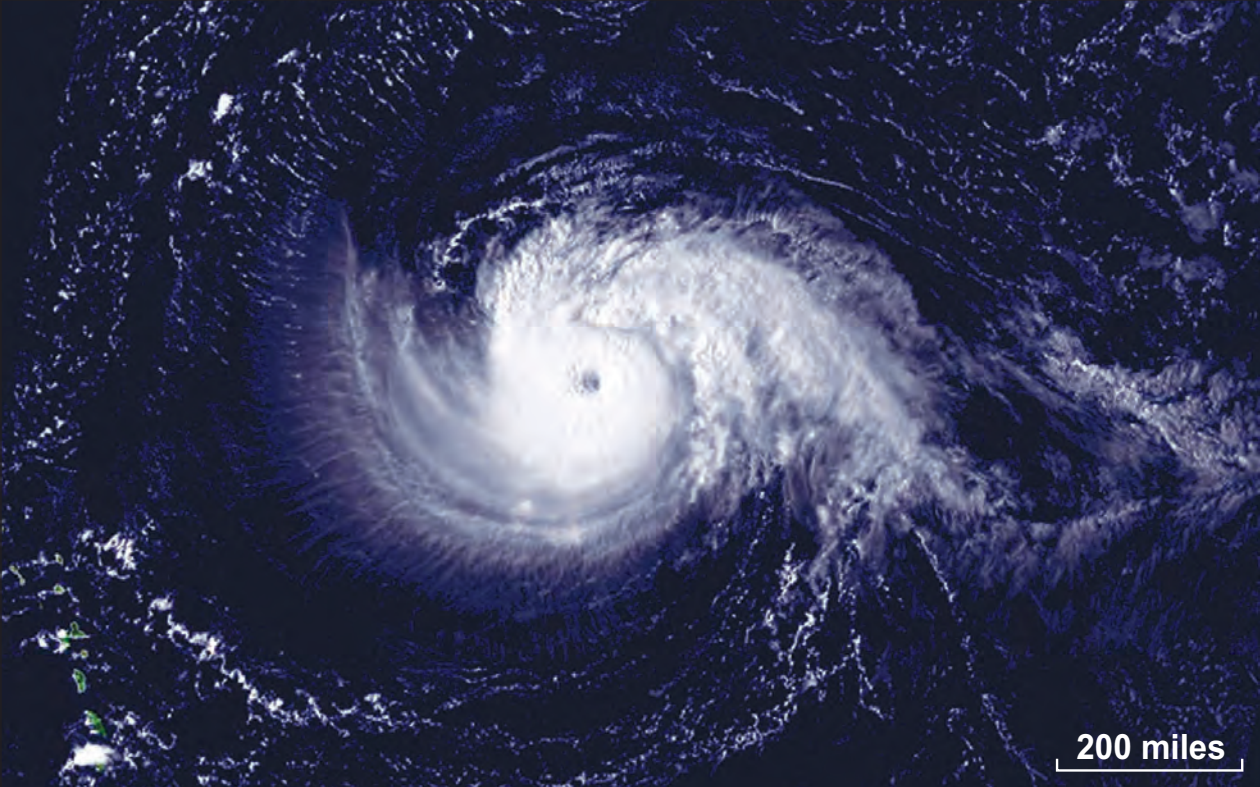
**The number of marks is given in brackets at the end of each question or part-question.**

**You will be awarded marks for the quality of your written communication.**

**Your answers must be relevant and must make full use of the information given to be awarded full marks for a question.**

**You are reminded that you should always support your answers using your knowledge and understanding of the topic chosen.**

**Source A – Satellite image of Hurricane Isabel.**



**PATTERNS AND PLACES**

**Answer Question 1 (Section A) AND EITHER Question 2 OR Question 3 (Section B).**

**SECTION A**

**Answer ALL parts of this question.**

- 1. This question is about the influence of the physical environment on the distribution and activities of people.**

**Study Source A opposite and answer the question that follows.**

- (a) Use Source A ONLY to describe TWO features of a hurricane. [2]**

---

---

---

---

---

---

---

---

---

---







## Source B – Preparing for a hurricane















**1(f) 'Climate is the most important influence on the distribution of the world's population.'  
To what extent do you agree with this statement?**

**[8]**

**In your answer you may consider:**

- the influence of climate on population distribution;**
- other factors which influence population distribution.**

**Conclude your answer by saying to what extent you agree with the statement, and why.**

---

---

---

---

---

---

---

---

---

---





---

---

---

---

---

---

---

---

---

---

---

---

---

---

---

---

---

---

---

---

---

---

30

**END OF SECTION A**



# Source B – A Central Business District













2(d) **‘Living in a UK inner city gives you a better quality of life than living in the suburbs.’**

**To what extent do you agree with this statement?**

**[8]**

**In your answer you may consider:**

- the benefits and problems of living in the inner city;**
- the benefits and problems of suburban living.**

**Conclude your answer by saying to what extent you agree with the statement, and why.**

---

---

---

---

---

---

---

---

---

---





If you have answered Question 2 you **MUST NOT** answer Question 3.

**3. This question is about issues connected with the world's climate.**

**Study Source A opposite and answer the question that follows.**

**(a) Use Source A ONLY to describe how the percentage of household waste recycling has changed. [2]**

---

---

---

---

---

---

---

---

---

---

---

## Source B – A Volcanic Eruption













**3(d) ‘The most significant effect that global warming has on people’s lives is the increasing strength of tropical storms.’**

**To what extent do you agree with this statement?**

**[8]**

**In your answer you may consider:**

- how tropical storms affect people’s lives;**
- the other effects of global warming on people’s lives.**

**Conclude your answer by saying to what extent you agree with the statement, and why.**

---

---

---

---

---

---

---

---

---

---







---

---

---

---

---

---

---

---

---

---

---

---

---

---

---

---

---

---

---

---

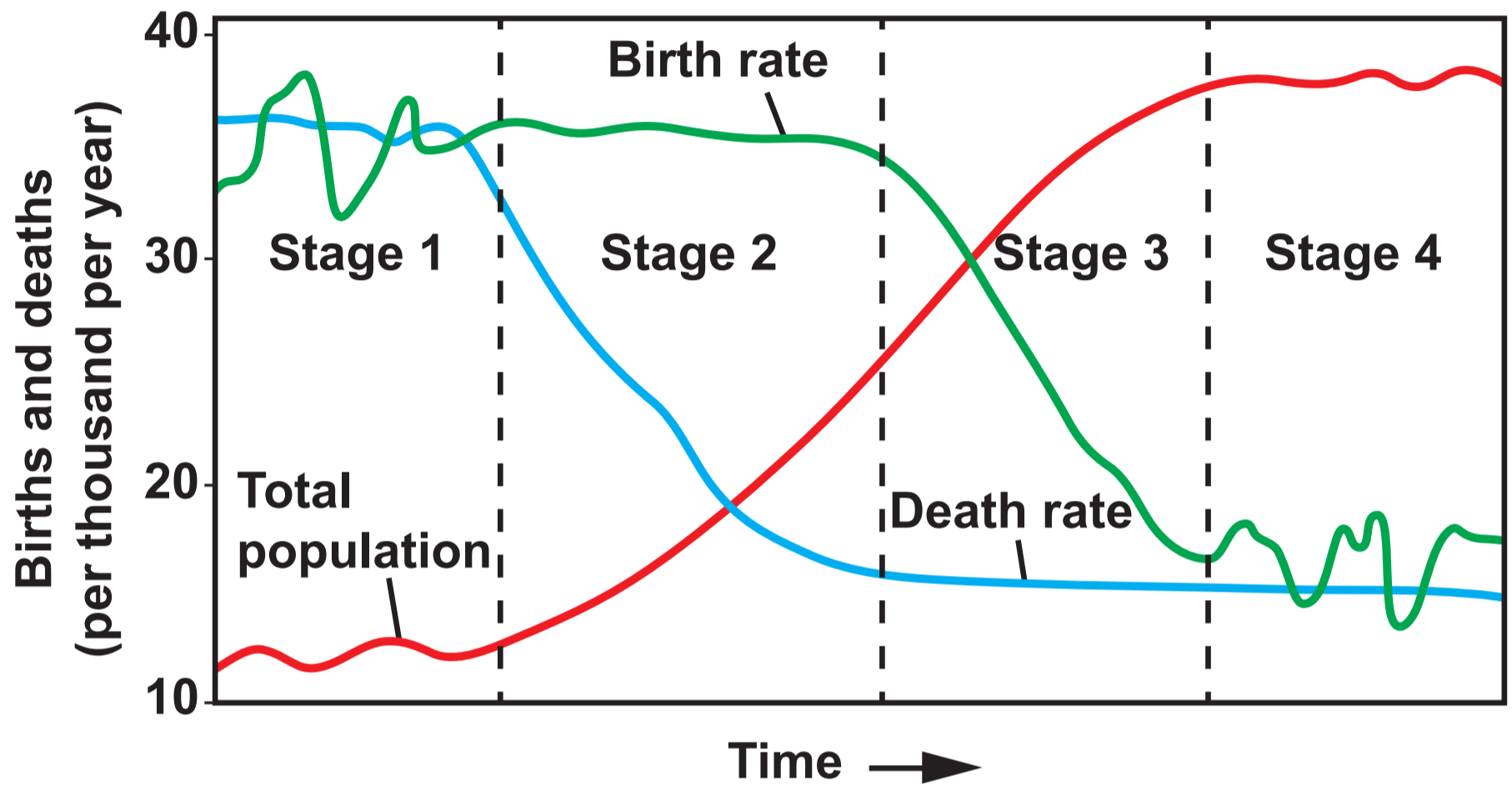
---

20

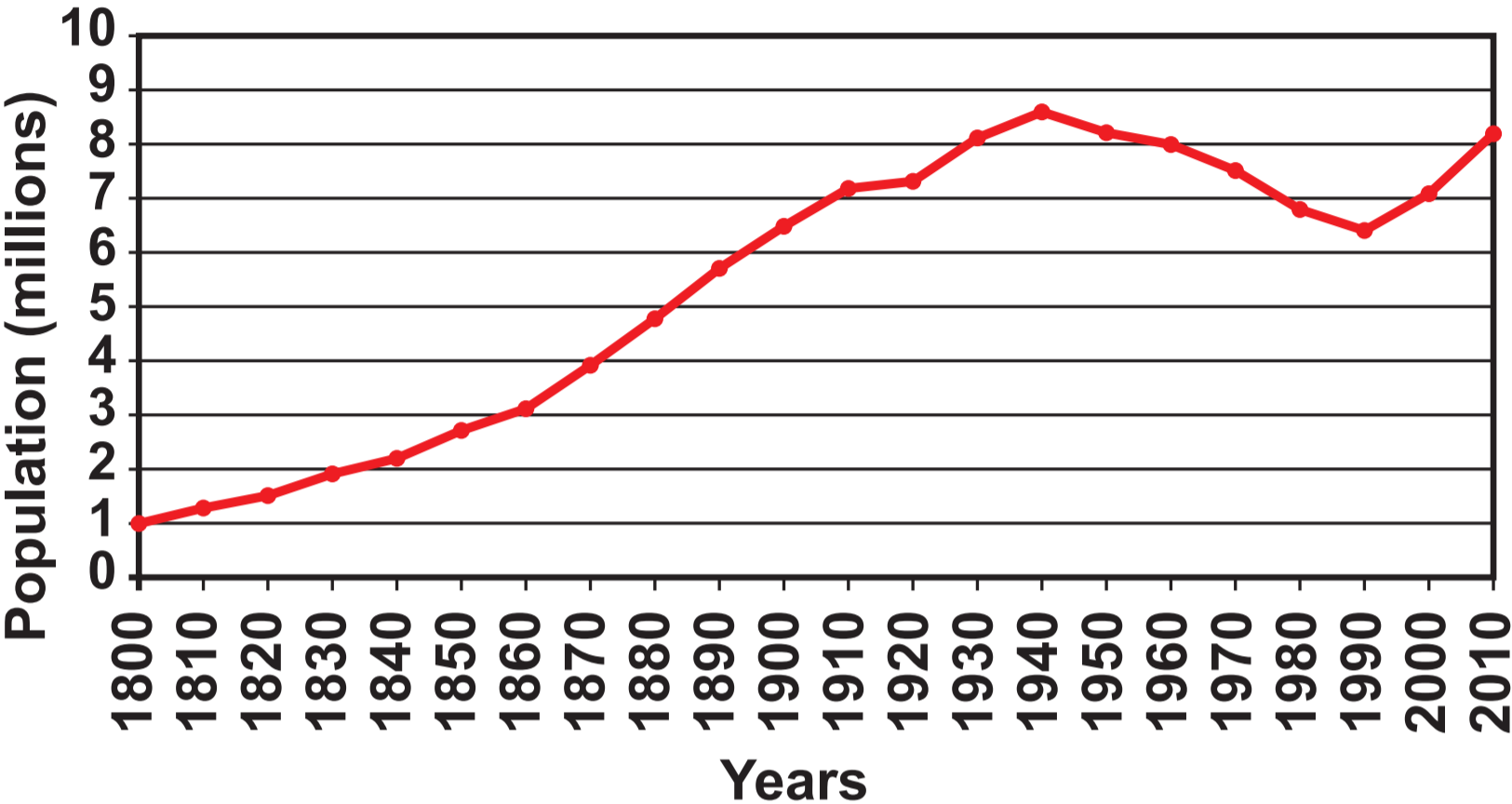
**END OF SECTION B**

**END OF PAPER**

# Source C – The Demographic Transition Model



Source A – The Changing Population of London





Source A – The percentage of Household Waste that is recycled in England (2001-2014)

