



**4321/01**

**HUMANITIES**

**UNIT 1: People and their Environments**

**P.M. THURSDAY, 16 May 2013**

**1 hour plus your additional time allowance**

**Surname** \_\_\_\_\_

**Other Names** \_\_\_\_\_

**Centre Number** \_\_\_\_\_

**Candidate Number** 0 \_\_\_\_\_

<b>Questions answered</b>	<b>Examiner's use only</b>
<b>Question 1 (Section A)</b>	<b>30</b>
<b>Question 2 or 3 (Section B)</b>	<b>20</b>
<b>TOTAL</b>	<b>50</b>

**INSTRUCTIONS TO CANDIDATES**

**Use black ink, black ball-point pen or your usual method.**

**Write your name, centre number and candidate number in the spaces provided on the front cover.**

**Answer Question 1 (Section A) AND either Question 2 or Question 3 (Section B).**

**Write your answers in the spaces provided in this booklet. Use supplementary sheets when there is insufficient room in this booklet. Write your name at the top of each supplementary sheet, indicating clearly the number of the question you answer. Put the supplementary sheets inside this booklet.**

## **INFORMATION FOR CANDIDATES**

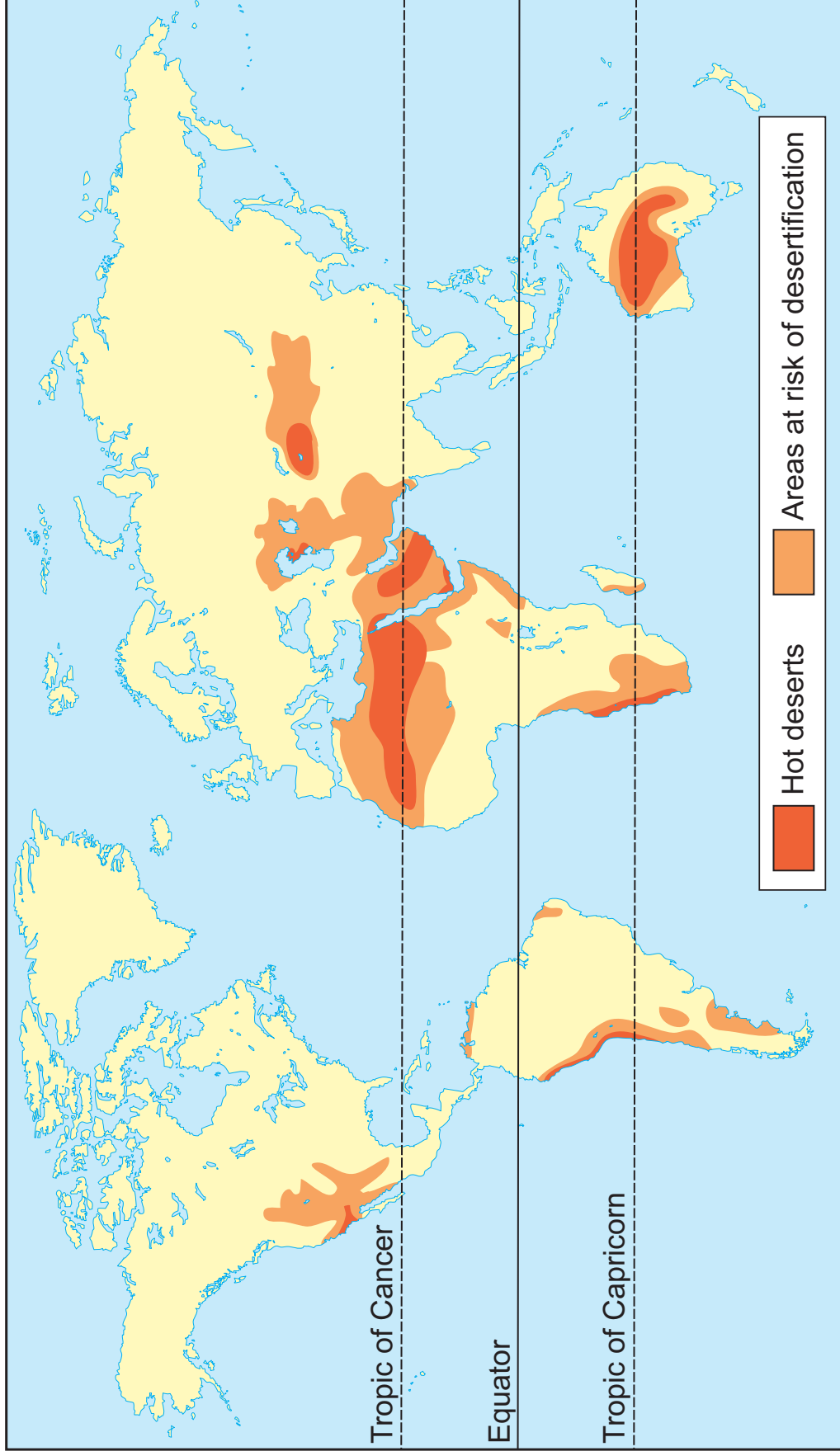
**The number of marks is given in brackets at the end of each question or part-question.**

**You will be awarded marks for the quality of your written communication.**

**Your answers must be relevant and must make full use of the information given to be awarded full marks for a question.**

**You are reminded that you should always support your answers using your knowledge and understanding of the topic chosen.**

# SOURCE A – AREAS AT RISK OF DESERTIFICATION



**PEOPLE AND THEIR ENVIRONMENTS**

**Answer Question 1 (Section A) AND EITHER Question 2 OR Question 3 (Section B).**

**SECTION A**

**Answer ALL parts of this question.**

**1 This question is about the pressures of food supply on the global environment.**

**Study Source A opposite and then answer the question that follows.**

**1(a) Use Source A to describe the location of areas at risk of desertification. [2]**

---

---

---

---

---

---

---

---

---

---

---

---

---

---

---

---

**1(b) Explain how human activity can increase desertification. [4]**

---

---

---

---

---

---

---

---

---

---

---

---





## SOURCE B – SUBSISTENCE FARMING IN UGANDA



© Wayne Huchinson /Alamy







**SOURCE C – COMBINE HARVESTER AND TRACTOR WITH TRAILER IN A BARLEY FIELD**



**© Cathy Wright/Alamy**





**1(f) ‘Supermarkets have had a positive effect on food production in the UK.’**

**To what extent do you agree with this statement?**

**[8]**

**Give arguments for and against this statement by:**

**Describing how supermarkets can benefit farmers or customers; considering how supermarkets may cause problems for farmers in the UK. Conclude by saying how far you agree with this statement.**

---

---

---

---

---

---

---

---

---

---

---





---

---

---

---

---

---

---

---

---

---

---

---

---

---

---

---

---

---

---

---

---

---

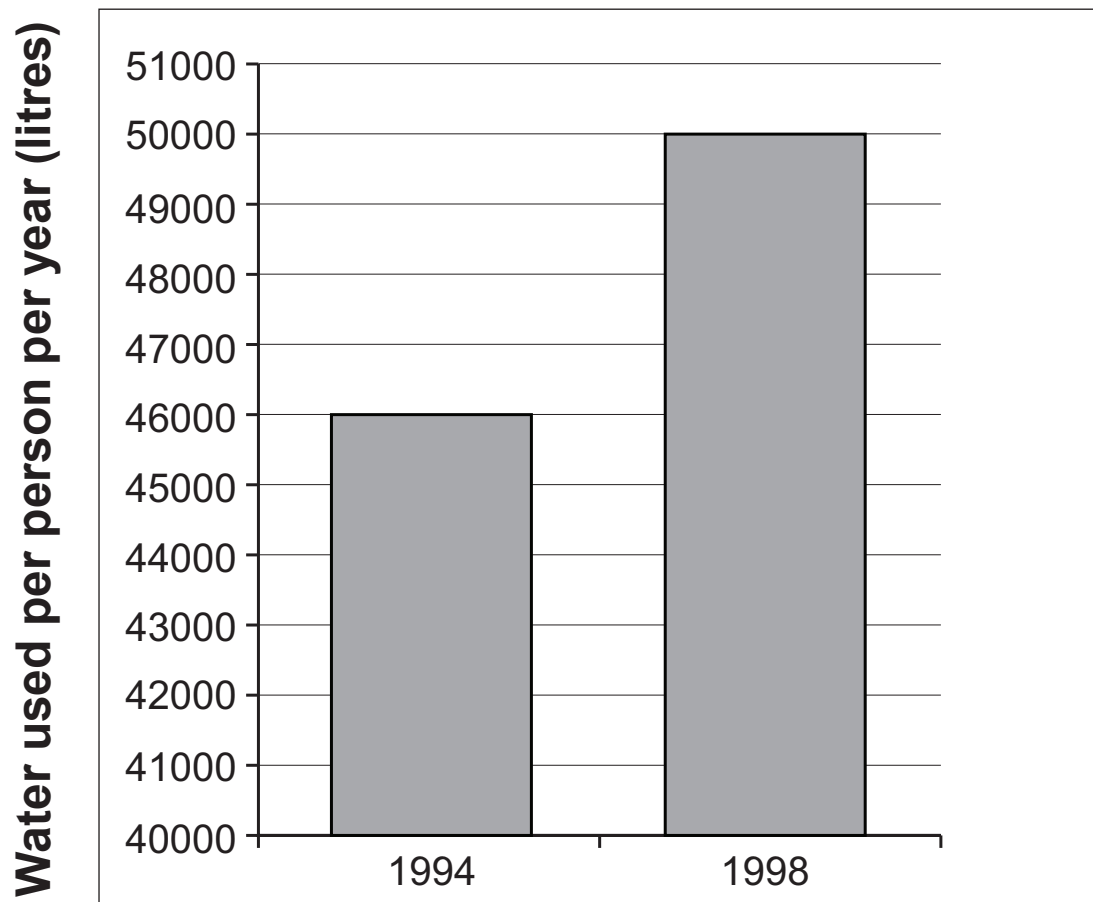
---

---

**END OF SECTION A**



## SOURCE A – CHANGING WATER USE IN THE SEVERN TRENT WATER REGION



## SOURCE B – WATER BEING USED IN THE UK



© Tom Wood/Alamy









2(d) 'MEDCs are capable of stopping floods and they should always attempt to do so.'

To what extent do you agree with this statement?

[8]

**Give arguments for and against this statement by:**

**Describing how floods can be prevented; considering the disadvantages of flood prevention techniques.**

**Conclude by saying how far you agree with the statement.**

---

---

---

---

---

---

---

---

---

---

---

---



---

---

---

---

---

---

---

---

---

---

---

---

---

---

---

---

---

---

---

---

---

---

---

---

---

---

---

---

**END OF QUESTION 2**

If you have answered Question 2 you **MUST NOT** answer Question 3.

**3 This question is about sustainable development of tropical rainforests.**

Study Source A opposite and answer the question that follows.

**3(a) Use Source A to describe tropical rainforest destruction in Brazil. [2]**

---

---

---

---

---

---

---

---

---

---

---

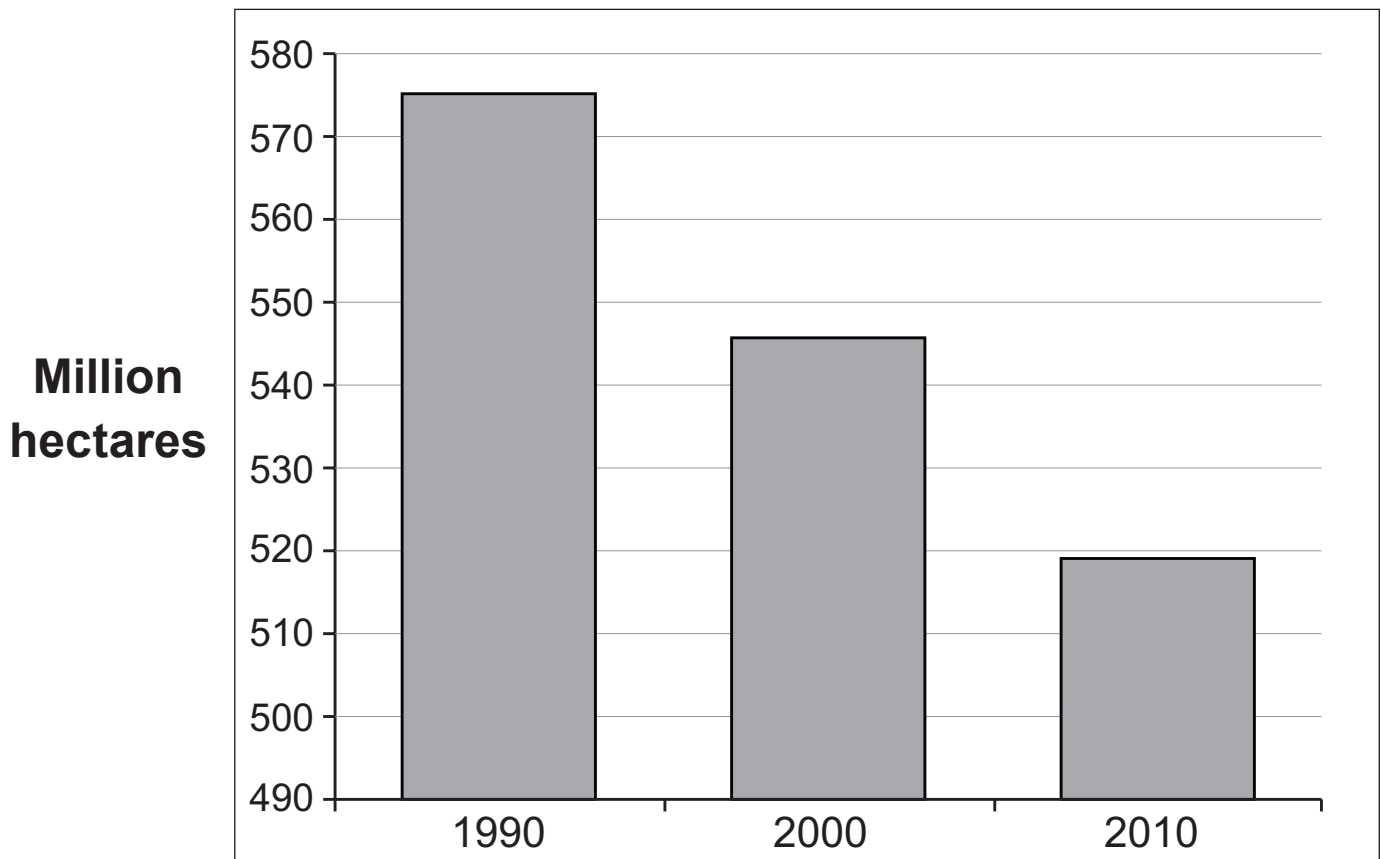
---

---

---

---

## SOURCE A – TOTAL AMOUNT OF TROPICAL RAINFOREST IN BRAZIL



## SOURCE B – RAINFOREST CHEMIST CARTOON



**“It’s just in from the rainforest so there may still be some roots and stems in it.”**

© [www.cartoonstock.com](http://www.cartoonstock.com)









3(d) 'The modern world has brought misery to the native tribes of the rainforest.'

To what extent do you agree with this statement?

[8]

**Give arguments for and against this statement by:**

**Describing problems for native tribes caused by rainforest development; considering the benefits the modern world has brought to native tribes.**

**Conclude by saying how far you agree with the statement.**

---

---

---

---

---

---

---

---

---

---

---



---

---

---

---

---

---

---

---

---

---

---

---

---

---

---

---

---

---

---

---

---

---

---

---

**END OF SECTION B**

**END OF PAPER**