

Candidate Forename		Candidate Surname	
-------------------------------	--	------------------------------	--

Centre Number						Candidate Number				
--------------------------	--	--	--	--	--	-----------------------------	--	--	--	--

**OXFORD CAMBRIDGE AND RSA EXAMINATIONS
ADVANCED GCE**

F225

HUMAN BIOLOGY

Genetics, Control and Ageing

WEDNESDAY 16 JUNE 2010: Morning

DURATION: 1 hour 45 minutes

SUITABLE FOR VISUALLY IMPAIRED CANDIDATES

Candidates answer on the Question Paper

OCR SUPPLIED MATERIALS:

Loose sheet containing Fig. 1.2

OTHER MATERIALS REQUIRED:

Electronic calculator


Ruler (cm/mm)

READ INSTRUCTIONS OVERLEAF

INSTRUCTIONS TO CANDIDATES

- Write your name clearly in capital letters, your Centre Number and Candidate Number in the boxes on the first page.
- Use black ink. Pencil may be used for graphs and diagrams only.
- Read each question carefully and make sure that you know what you have to do before starting your answer.
- Answer ALL the questions.
- Write your answer to each question in the space provided. Additional paper may be used if necessary but you must clearly show your Candidate Number, Centre Number and question number(s).

INFORMATION FOR CANDIDATES

- The number of marks is given in brackets [] at the end of each question or part question.
- The total number of marks for this paper is 100.
- You are advised to show all the steps in any calculations.
-  Where you see this icon you will be awarded marks for the quality of written communication in your answer.

BLANK PAGE

Answer ALL the questions.

- 1 The kidney is responsible for the removal of nitrogenous waste from blood plasma.**

Fig. 1.1, opposite, shows a photomicrograph of a section through the cortex of the kidney and a simplified drawing of some of the structures.

(a) Identify the structures labelled A to C in Fig. 1.1.

A _____

B _____

C _____ **[3]**

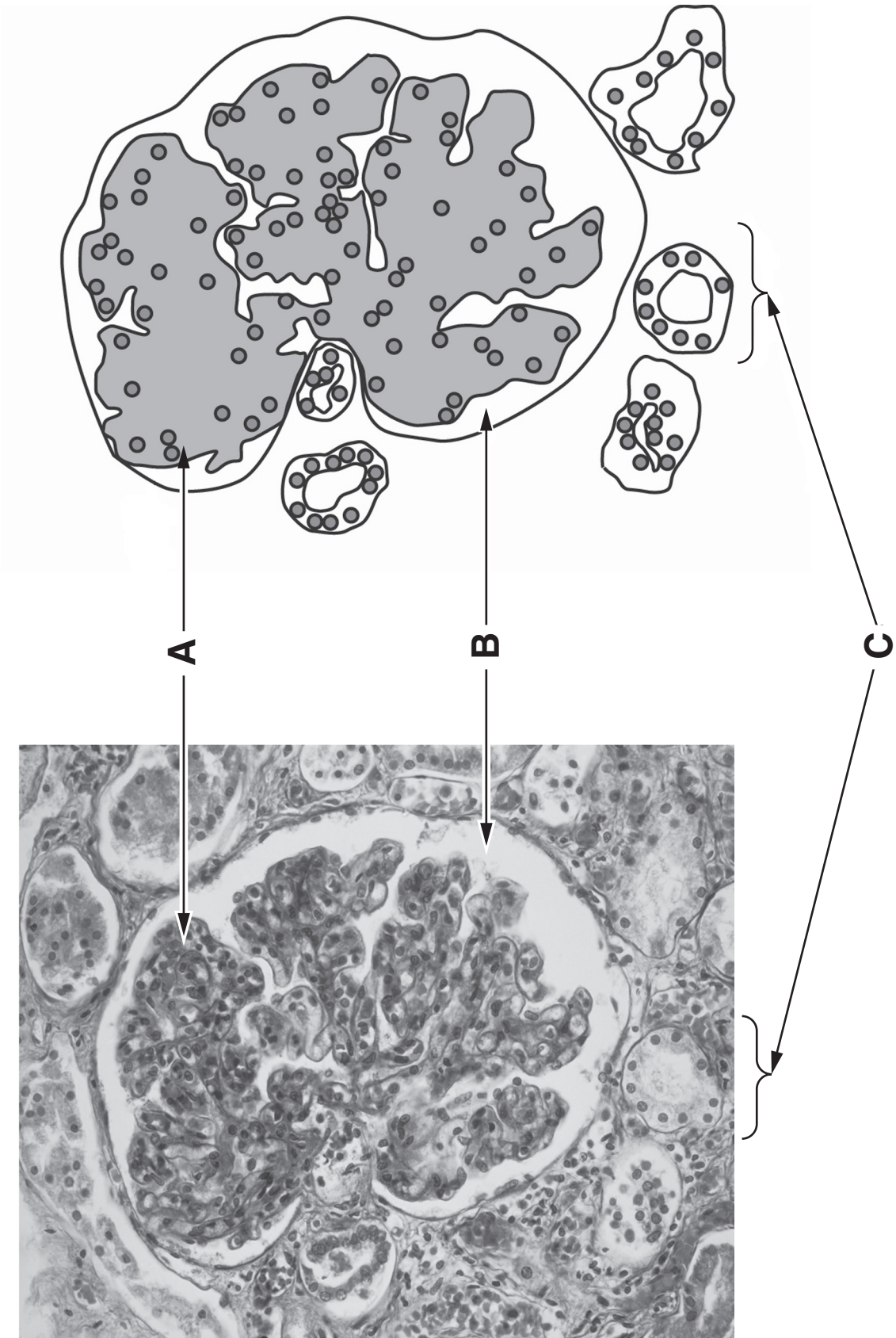


Fig. 1.1

(b) Nitrogenous waste is removed from blood plasma by the process of ultrafiltration.

Describe how the process of ultrafiltration takes place in the kidney AND describe how structures in the kidney are adapted to allow ultrafiltration to occur.

[7]

QUESTION 1(c) STARTS ON PAGE 8

(c) One method of assessing kidney function is to determine the glomerular filtration rate (GFR). The GFR is the volume of fluid that is filtered out of the blood per minute.

INULIN is a polysaccharide that is used to determine the GFR.

- Inulin is removed completely from blood plasma by ultrafiltration.
- Inulin is NOT reabsorbed.
- Inulin is NOT secreted into the kidney tubules.

Inulin is given intravenously. The blood plasma concentration of inulin is then measured and urine samples are collected. The GFR can be determined from the concentration of inulin in a known volume of urine.

An inulin molecule is composed of a chain of 32 monosaccharide units. Fig. 1.2, on the loose sheet, shows the structure of inulin.

(i) Name the bond joining the monosaccharide units in a molecule of inulin.

_____ [1]

(ii) Suggest TWO properties of the inulin molecule that make it suitable for use in determining the GFR.

[2]

QUESTION 1(d) STARTS ON PAGE 10

- (d) Using inulin to determine the GFR is expensive. As an alternative, the GFR can be ESTIMATED from the blood plasma concentration of a substance called CREATININE.

Creatinine is a breakdown product of creatine phosphate, a substance found in muscle cells.

Fig. 1.3, opposite, shows the relationship between plasma creatinine concentration and the GFR.

- (i) In normal kidney function, the GFR range is between 90 and $150 \text{ cm}^3 \text{ min}^{-1}$.

Estimate the normal range of PLASMA CREATININE CONCENTRATION using Fig. 1.3.

Range = _____ [2]

- (ii) Suggest why measuring the plasma creatinine concentration can only give an ESTIMATE of the GFR.

[2]

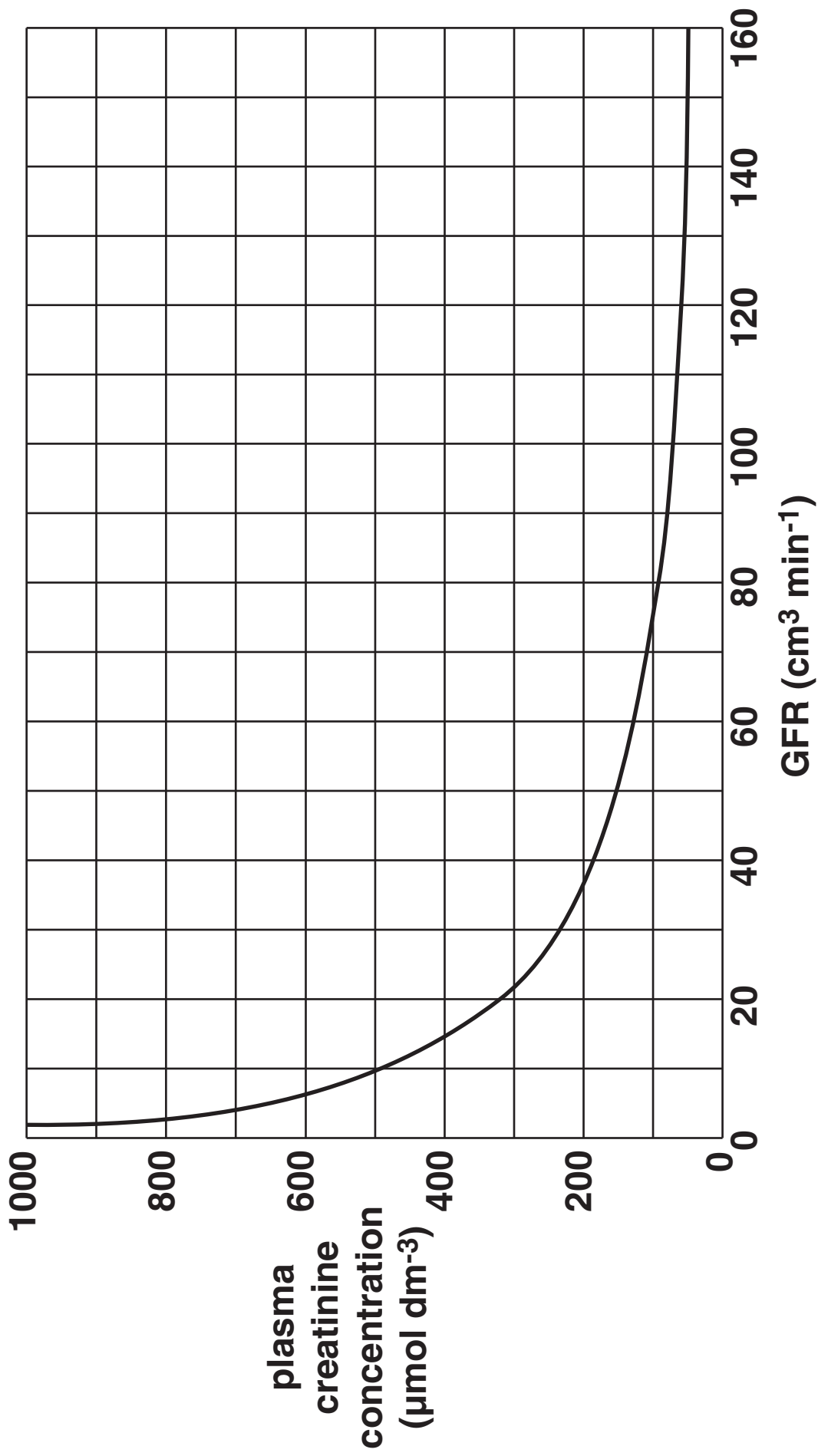


Fig. 1.3

(e) When kidney function is severely impaired, renal dialysis may be necessary.

Outline the advantages and disadvantages of HAEMODIALYSIS in the treatment of kidney disease.

[4]

[Total: 21]

2 The ABO blood grouping in humans is determined by a single gene with three alleles: I^A , I^B and I^O .

(a) Distinguish between the terms *gene* and *allele*.

[4]

QUESTION 2(b) STARTS ON PAGE 14

Fig. 2.1 shows a pedigree diagram of the inheritance of the ABO blood group. The blood group of some of the individuals is given in the pedigree.

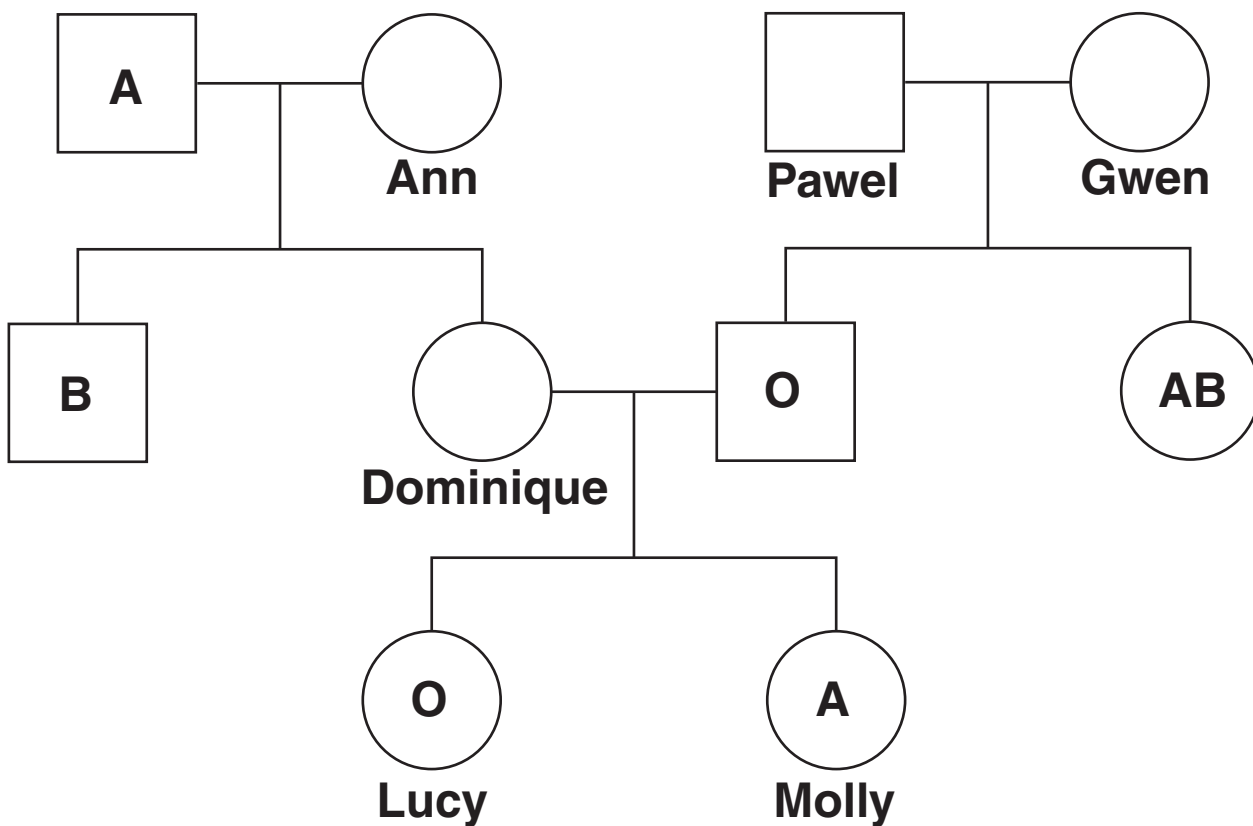


Fig. 2.1

(b) Using the information in Fig. 2.1 and the genetic symbols I^A , I^B and I^O , give the PHENOTYPE and GENOTYPE of the following individuals in the pedigree:

individual	phenotype	genotype
Dominique		
Ann		
Pawel		
Gwen		

[4]

(c) Fig. 2.1 shows that two sisters, Lucy and Molly, have different blood groups.

Explain why it is possible for Lucy's blood to be given to Molly, but Molly's blood cannot be given to Lucy.

[4]

(d) In the past, the blood groups of parents and their offspring were compared as part of the evidence in disputes regarding the paternity of a child.

This technology has been replaced by GENETIC PROFILING (genetic fingerprinting).

- Genetic profiling requires the use of restriction enzymes.
 - Restriction enzymes cut DNA to produce restriction fragments.
 - Restriction fragments are labelled using probes that detect MINISATELLITES.
- (i) The restriction enzyme *BamH1* cuts DNA into fragments. *BamH1* cuts the DNA at the recognition site GGATCC.

Using *BamH1* as an example, explain what is meant by the term *palindromic sequence*.

[2]

- (ii) Minisatellites are regions of DNA where a short sequence of bases is repeated in the same strand of DNA. The number of repeats varies from individual to individual.

Fig. 2.2 shows three DNA sequences, each with a different number of repeats.

- Each sequence contains two recognition sites for the restriction enzyme *BamH1*.
- *BamH1* cuts the DNA between the first and second G in the recognition site.

1	GGATCCCGATGATGATGATGATGATGATGATGATGATGGATCCCAATC
2	AAAGGCGGATCCCGATGATGATGATGAATCCGGTGGATCCCTTTTATT
3	AAATTACCCTTCGGATCCCGATGATGATGATGATGATGATGATGGATCC

Fig. 2.2

The length of a restriction fragment can be expressed as the number of BASES contained in the fragment.

State the length of the largest restriction fragment that would be found in each DNA sample following treatment with *BamH1*.

1	_____	bases
2	_____	bases
3	_____	bases

[3]

(iii) Following the treatment of DNA with restriction enzymes, the restriction fragments are then analysed using gel electrophoresis.

A banding pattern is obtained that depends on the size of the restriction fragments.

Fig. 2.3 shows the banding pattern obtained from four blood samples in a paternity case.

The blood samples were taken from the child and three adults, P, Q and R. The three adults are the mother and two possible fathers.

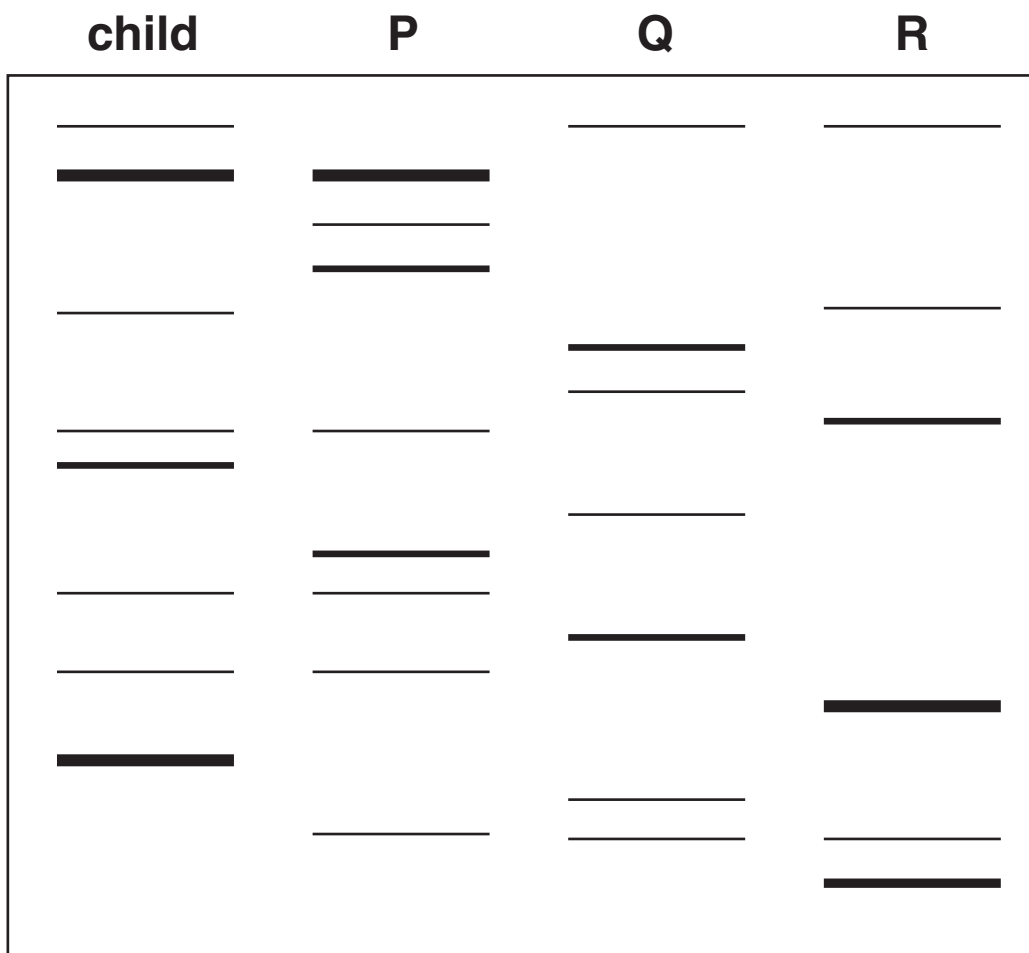


Fig. 2.3

Using the information in Fig. 2.3, state which of the letters P, Q and R identify the parents of the child.

Give reasons for your answer.

[2]

[Total: 19]

3 The following statement was issued by UK Transplant in September 2008.


Between 1 April 2007 and 31 March 2008, 3235 organ transplants were carried out thanks to the generosity of 1665 donors.

(a) (i) Explain why the number of organ donations is greater than the number of organ donors.

[1]

(ii) Organs that are donated come from a wide range of sources.

Discuss the advantages and disadvantages of different sources of donated organs.

 ***In your answer you should discuss a range of sources and give a critical consideration of each named source.***

BLANK PAGE

QUESTION 3(b) STARTS ON PAGE 24

Cornea transplants account for approximately 40% of transplant operations each year.

During a cornea transplant operation, the damaged area of the existing cornea is removed and a section of healthy cornea from a donor is grafted into place.

(b) The cells that make up the cornea are kept transparent by the activity of a layer of endothelial cells. The endothelial cells form a layer between the cornea and the fluid in the eye, and actively remove water from the corneal cells.

Fig. 3.1, opposite, shows the relative positions of the cornea and the layer of endothelial cells.

(i) Name the fluid present in region M.

_____ [1]

(ii) Explain why water moves into the corneal cells.

_____ [2]



Fig. 3.1

- (c) There are no blood vessels in the cornea. Tissue matching is NOT essential for successful cornea transplants.

Explain why the lack of blood vessels in the cornea means that tissue matching is not essential for cornea transplants.

[2]

- (d) Damage to the cornea may lead to a loss of visual acuity.

Fig. 3.2, opposite, shows a Snellen chart that is used to assess visual acuity.

Suggest TWO variables that must be controlled during a visual acuity test in order to achieve valid results.

[2]

[Total: 17]



Fig. 3.2

4 Thyroxine is a hormone secreted by the thyroid gland. Thyroxine has many important functions in the human body. One function is the control of metabolic rate.

(a) Fig. 4.1 shows how the secretion of thyroxine is controlled.

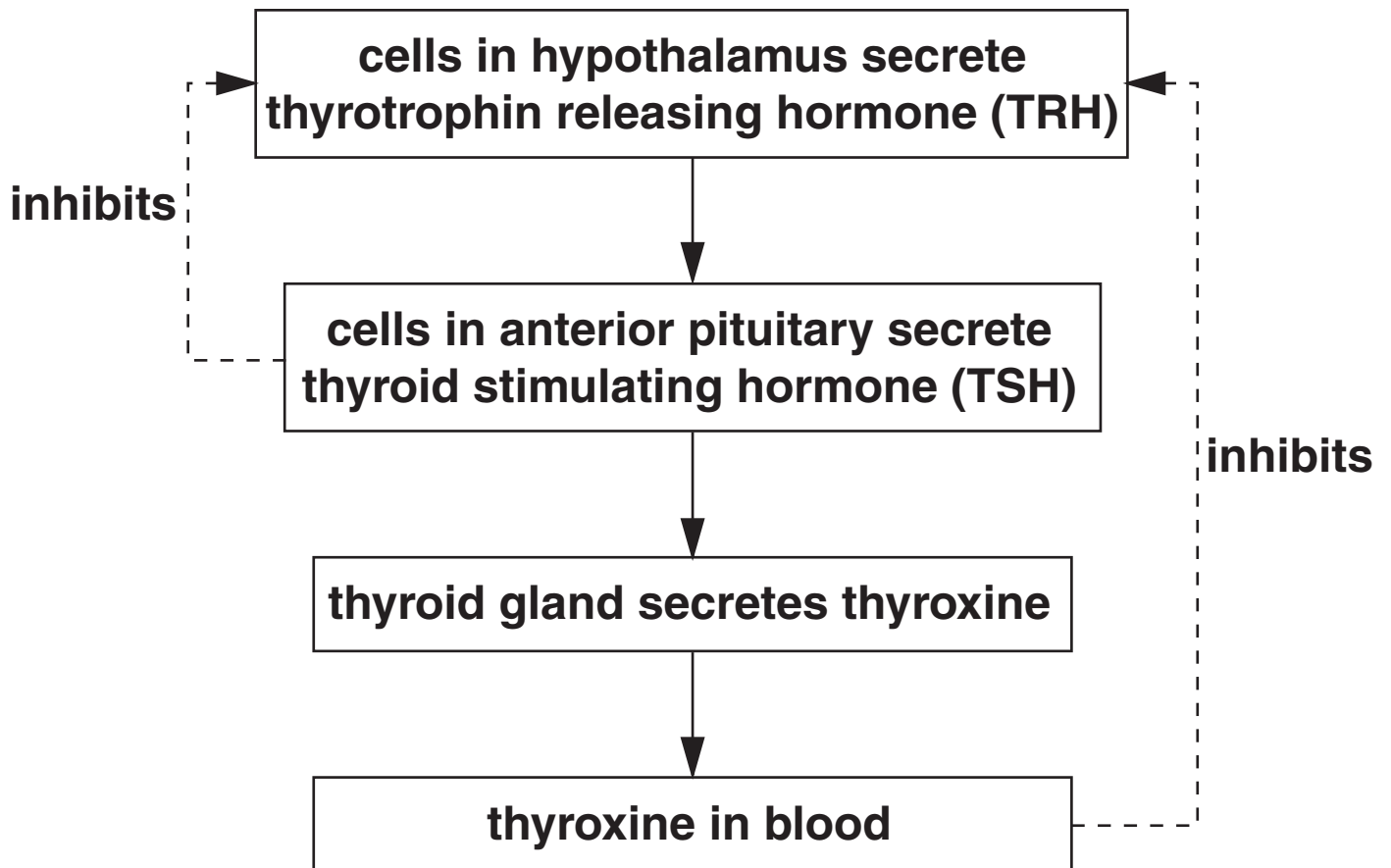


Fig. 4.1

Using the information in Fig. 4.1, explain how excessively high blood concentrations of thyroxine are prevented by negative feedback.

[3]

(b) One effect of an increase in blood thyroxine concentration is to increase the numbers of mitochondria present in some cells.

State AND explain the long-term effect on the body of increasing the number of mitochondria present in cells.

[3]

(c) One method of diagnosing an underactive thyroid involves measuring the concentration of TSH in blood samples and comparing these to the normal range.

TSH can be detected in a blood sample using an enzyme-linked immunosorbent assay (ELISA).

The steps in carrying out an ELISA are illustrated in Fig. 4.2.

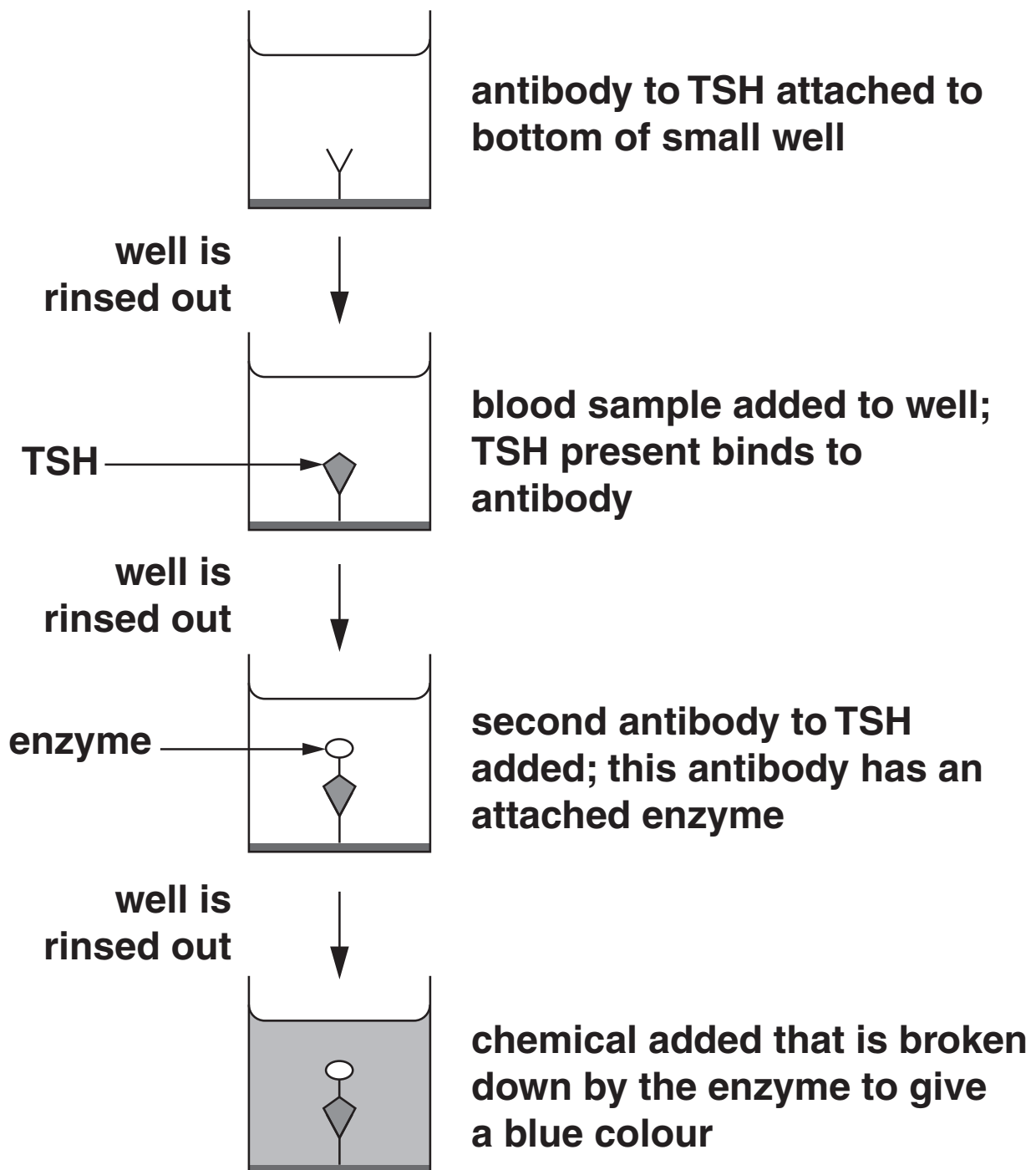


Fig. 4.2

The breakdown of the chemical by the enzyme produces a change in colour, which indicates the presence of TSH in the sample. Differences in colour intensity can be used to assess the concentration of TSH in the sample.

- (i) Complete the following passage that describes in detail how the ELISA works.

TSH consists of two protein chains that are modified in the _____ of the cells of the anterior pituitary to form a glycoprotein. The TSH in the blood sample acts as an _____ and binds to the _____ region of the antibody. The second antibody binds to the TSH. The chemical added in the final stage of the procedure acts as the _____ for the enzyme attached to the second antibody. This chemical binds to the _____ of the enzyme to form an _____ . [6]

(ii) Suggest why it is important to rinse out the well between each stage of the procedure.

[2]

[Total: 14]

5 Osteoporosis can be diagnosed by the use of a bone density scan (bone densitometry).

(a) Outline how a bone density scan is carried out.

[3]

QUESTION 5(b) STARTS ON PAGE 34

(b) Osteoporosis can cause small fractures of vertebral bones resulting in a loss of height and a curved back.

Table 5.1 shows the prevalence of vertebral fractures associated with osteoporosis in males and females of different ages in the United Kingdom.

Table 5.1

age (years)	prevalence of vertebral fractures (cases per 10000 persons)		female prevalence ÷ male prevalence × 100
	males	females	
50 – 54	1 350	699	52
55 – 59	1 500	938	63
60 – 64	1 660	1 230	74
65 – 69	1 810	1 570	87
70 – 74	1 980	1 980	100
75 – 79	2 140	2 460	115
80 – 84	2 300	3 000	130
85+	2 630		165

- (i) Using the information in Table 5.1, calculate the prevalence of vertebral fractures in women aged 85 or over.

Show your working and give your answer to the nearest whole number.

Answer = _____ cases per 10 000 persons [2]

QUESTION 5(b)(ii) STARTS ON PAGE 36

(ii) Compare and contrast the prevalence of vertebral fractures in males and females.



In your answer you should use data to support statements.

[5]

(iii) Suggest ONE way in which osteoporosis treatment in the 50 – 59 age group would differ between males and females. Give a reason for your answer.

[2]

QUESTION 5(c) STARTS ON PAGE 38

- (c) As part of routine monitoring of bone health, blood samples are taken and the concentration of calcium is measured.

Calcium is present in blood as the calcium ion (Ca^{2+}) and bound to the plasma protein albumin. Low blood concentration of calcium is a risk factor for osteoporosis.

- (i) Outline the DIETARY advice that should be offered to people to maintain their blood calcium concentration.

[2]

- (ii) Suggest ONE further consequence of low blood calcium concentration OTHER THAN the effect on bone health. Give a reason for your suggestion.

[2]

[Total: 16]

The lower jaw in humans contains the lingual nerve and the inferior dental nerve.

When teeth in the lower jaw require dental treatment, an anaesthetic is injected. The injection is located so that the lingual nerve and the inferior dental nerve are both affected. This causes numbness in the jaw and also in parts of the tongue and cheek. The tongue can still be moved.

(b) Suggest what type of neurones in the lingual and inferior dental nerves are affected by the anaesthetic. Give a reason for your suggestion.

[2]

(c) The anaesthetic molecule diffuses into the neurone. The molecule then combines with hydrogen ions in the cytoplasm. This enables the molecule to bind to the sodium ion channels which prevents the passage of sodium ions.

Suggest why the anaesthetic molecule was only able to bind to the sodium ion channel AFTER it had combined with hydrogen ions.

[2]

(d) Following dental treatment, painkilling drugs such as opioids may be given.

Outline how opioids block the transmission of pain in the central nervous system.

[4]

[Total: 13]

END OF QUESTION PAPER

BLANK PAGE

BLANK PAGE



Copyright Information

OCR is committed to seeking permission to reproduce all third-party content that it uses in its assessment materials. OCR has attempted to identify and contact all copyright holders whose work is used in this paper. To avoid the issue of disclosure of answer-related information to candidates, all copyright acknowledgements are reproduced in the OCR Copyright Acknowledgements Booklet. This is produced for each series of examinations, is given to all schools that receive assessment material and is freely available to download from our public website (www.ocr.org.uk) after the live examination series.

If OCR has unwittingly failed to correctly acknowledge or clear any third-party content in this assessment material, OCR will be happy to correct its mistake at the earliest possible opportunity.

For queries or further information please contact the Copyright Team, First Floor, 9 Hills Road, Cambridge CB2 1GE.

OCR is part of the Cambridge Assessment Group; Cambridge Assessment is the brand name of University of Cambridge Local Examinations Syndicate (UCLES), which is itself a department of the University of Cambridge.