

ADVANCED SUBSIDIARY GCE
HEALTH AND SOCIAL CARE
Health and Safety in Care Settings

F913

Candidates answer on the question paper.

OCR supplied materials:
None

Other materials required:
None

Friday 14 January 2011
Morning

Duration: 1 hour 30 minutes



Candidate forename		Candidate surname	
-----------------------	--	----------------------	--

Centre number						Candidate number				
---------------	--	--	--	--	--	------------------	--	--	--	--

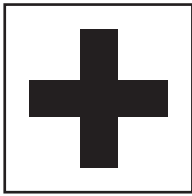
INSTRUCTIONS TO CANDIDATES

- Write your name, centre number and candidate number in the boxes above. Please write clearly and in capital letters.
- Use black ink. Pencil may be used for graphs and diagrams only.
- Read each question carefully. Make sure you know what you have to do before starting your answer.
- Write your answer to each question in the space provided. If additional space is required, you should use the lined pages at the end of this booklet. The question number(s) must be clearly shown.
- Answer **all** the questions.
- Do **not** write in the bar codes.

INFORMATION FOR CANDIDATES

- The number of marks is given in brackets [] at the end of each question or part question.
- The total number of marks for this paper is **100**.
- You will be awarded marks for the quality of written communication where an answer requires a piece of extended writing.
- This document consists of **20** pages. Any blank pages are indicated.

1 (a)



A



B



C

(i) Identify the **three** safety signs shown above. Describe how each improves safety or reduces risk.

A.....
.....
.....
.....

B.....
.....
.....
.....

C.....
.....
.....
..... [6]

(ii) What is the background colour used on safety signs?
..... [1]

(b) (i) What is the background colour used on warning signs?
..... [1]

(ii) What is the shape of warning signs?
..... [1]

(c) (i) Identify the legislation that controls the use of safety and warning signs.
..... [1]

(ii) Describe **three** key features of this legislation.

1
.....
.....

2
.....
.....

3
.....
..... [3]

(d) (i) Name the organisation which enforces all health and safety legislation.
..... [1]

(ii) Identify **one** other function of this organisation.
.....
..... [1]

[Total: 15]

2 (a) What is meant by 'cross-infection'?

.....
.....
.....
..... [2]

(b) Name **three** items of Personal Protective Equipment (PPE). Describe how each item of PPE protects both people who use services and practitioners in a care setting from cross-infection.

Item 1.....
.....
.....
.....
.....
.....

Item 2.....
.....
.....
.....
.....
.....

Item 3.....
.....
.....
.....
.....
..... [9]

(c) (i) What is meant by 'standard precautions'?

.....
.....
.....
..... [2]

(ii) Give **two** examples of standard precautions, excluding PPE.

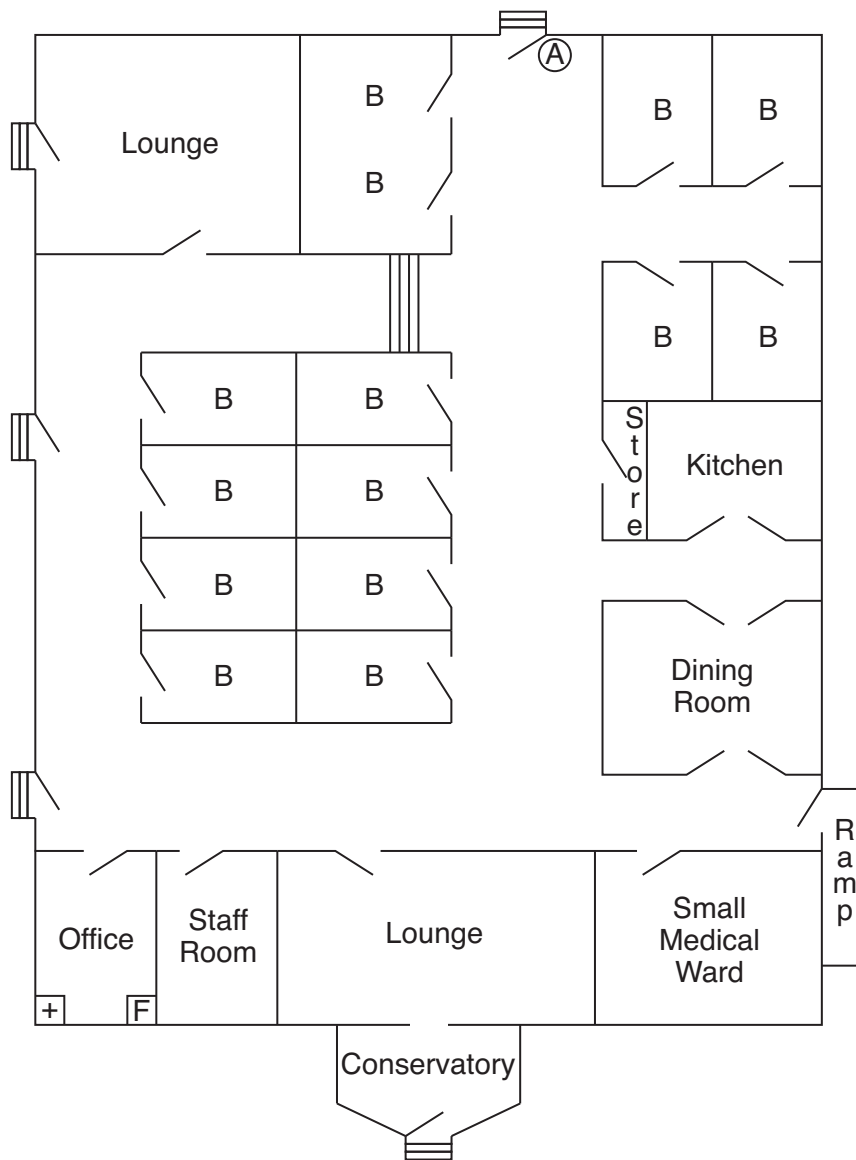
1
.....
2
..... [2]

[Total: 15]

3 (a) List the **five** stages of risk assessment in the correct order.

- 1.....
- 2.....
- 3.....
- 4.....
- 5..... [5]

Plan of Chester's Nursing Home



- | | | | |
|---|-------------------|-------|---------|
| + | first aid box | B | bedroom |
| F | fire extinguisher | — / — | door |
| Ⓐ | alarmed door | ≡ | steps |

.....

.....

.....

..... [15]

[Total: 20]

BLANK PAGE

PLEASE DO NOT WRITE ON THIS PAGE

13
BLANK PAGE

PLEASE DO NOT WRITE ON THIS PAGE

