



**ADVANCED SUBSIDIARY GCE**  
**GOVERNMENT AND POLITICS**  
 Contemporary Government of the UK

**F852**

Candidates answer on the Answer Booklet

**OCR Supplied Materials:**

- 8 page Answer Booklet

**Other Materials Required:**

None

**Monday 19 January 2009**  
**Morning**

**Duration: 1 hour 30 minutes**



**INSTRUCTIONS TO CANDIDATES**

- Write your name clearly in capital letters, your Centre Number and Candidate Number in the spaces provided on the Answer Booklet.
- Write your answers in black ink in the Answer Booklet provided.
- Answer **both** questions in Section A and **one** question in Section B.
- You must use your own knowledge and the source material in your answers.
- Write the numbers of the questions you answer on the front of the Answer Booklet.
- If you use additional sheets of paper, fasten the sheets to the Answer Booklet.
- Read each question carefully and make sure you know what you have to do before starting your answer.
- You are advised to spend 65 minutes on Section A and 25 minutes on Section B.
- Do **not** write in the bar codes.

**INFORMATION FOR CANDIDATES**

- The number of marks is given in brackets [ ] at the end of each question or part question.
- The total number of marks for this paper is **100**.
- You will be awarded marks for the quality of written communication including clarity of expression, structure and presentation of ideas, spelling, punctuation and grammar.
- This document consists of **4** pages. Any blank pages are indicated.

## Section A

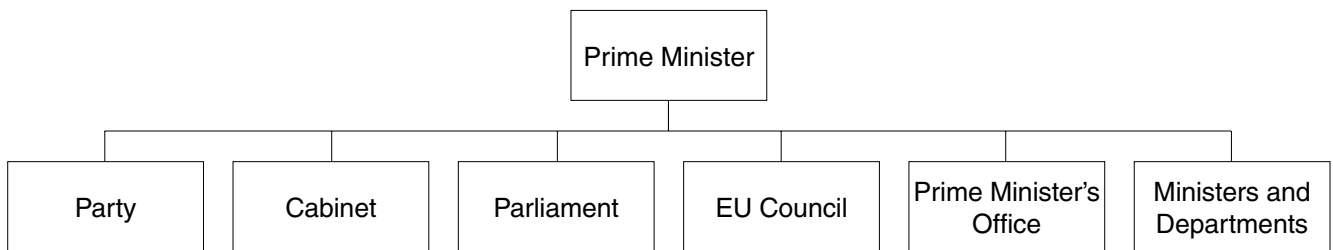
Answer **all** the questions in this section.

### Sources for Question 1

Read sources A and B below and use them when answering Question 1.

#### Source A

##### Prime ministerial power



#### Source B

##### Limits to prime ministerial power

It is easy to assume that the prime minister is all-powerful and can get through any policy or act that he or she chooses. The cabinet can be bypassed and reduced to a simple co-ordinating body. The government's strategic planning is now largely done in the prime minister's own policy unit in Number 10. However there are in fact several major limits to prime ministerial power. Parliament and party can both be major barriers, as can the pressure of public opinion backed up by a vocal media. Poor standing in the polls can also enable ministers and rivals to block policy coming out of Number 10.

**Section A**

Answer **all** the questions in this section.

- 1 (a) Using the sources and your own knowledge, describe the roles of the cabinet. [12]
- (b) Using the sources and your own knowledge, discuss the view that there are too few limits on the power of the prime minister. [28]
- 2 Discuss how effectively parliament checks the executive. [30]

**Section A Total: [70]**

**Section B**

Answer **one** question in this section.

- 3 Discuss the view that the constitutional reforms since 1997 have been of limited impact. [30]
- 4 Make out a case for and against the view that the most important role of the judiciary is defending the rights and liberties of citizens. [30]
- 5 Discuss the impact EU membership has had on the UK government and constitution. [30]

**Section B Total: [30]**

**Paper Total: [100]**



Permission to reproduce items where third-party owned material protected by copyright is included has been sought and cleared where possible. Every reasonable effort has been made by the publisher (OCR) to trace copyright holders, but if any items requiring clearance have unwittingly been included, the publisher will be pleased to make amends at the earliest possible opportunity.

OCR is part of the Cambridge Assessment Group. Cambridge Assessment is the brand name of University of Cambridge Local Examinations Syndicate (UCLES), which is itself a department of the University of Cambridge.