



General Certificate of Education
Advanced Level Examination
June 2014

German

GER4T/GER4V

Unit 4 Speaking Test

Candidate's Material

To be conducted by the teacher examiner between 7 March and 15 May 2014 (GER4T)

To be conducted by the visiting examiner between 7 March and 15 May 2014 (GER4V)

Time allowed: 35 minutes (including 20 minutes preparation time)

Instructions

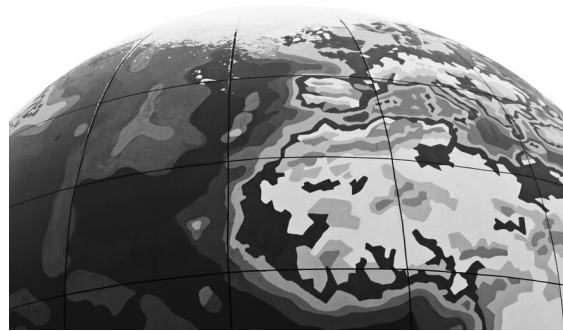
- During the 20 minutes preparation time you are required to prepare **one** of the two stimulus cards given to you.
- You may make notes during the preparation time only on the Additional Answer Sheet provided.
You must not write on this card.
- You should take the stimulus card with you into the examination room. You may refer to the card and any notes you have made at any time during this section of the test.
- Hand the stimulus card and the Additional Answer Sheet to the examiner before the start of the conversation section of the test.

Information

- The test will last approximately 15 minutes and will consist of a stimulus card (5 minutes), and a conversation based on the **two** Cultural Topics you have studied (10 minutes).
- You will be expected to choose one of the two opinions on your chosen stimulus card and outline your point of view to the examiner for approximately one minute. You must then defend and justify this opinion.
- You must **not** use a dictionary.

KARTE A	
Topic	ENVIRONMENT
Sub-topic	Protecting the planet

- Look at the card and read the two opinions in the speech bubbles.
- Choose **one** and think how you can convey and expand on its main ideas.
- Begin the discussion by outlining your point of view (this should take no longer than one minute).
- You must then be prepared to respond to anything the examiner might say and to justify your point of view.
- You may be required to explain something you have said, to respond to an opposing point of view expressed by the examiner, or to defend your expressed opinion(s).
- You may make notes in your preparation time and refer to them during this part of the test.



Wie nützlich sind Klimagipfel?

Meinung 1

Internationale Klimakonferenzen sind eine Zeit- und Geldverschwendung. Der Klimawandel wird durch solche Gipfeltreffen bestimmt nicht aufgehalten!

Meinung 2

Durch die Zusammenarbeit aller Länder werden wir Wege finden, den Klimawandel zu stoppen. Regelmäßige internationale Treffen sind deshalb wichtig.



General Certificate of Education
Advanced Level Examination
June 2014

German

GER4T/GER4V

Unit 4 Speaking Test

Candidate's Material

To be conducted by the teacher examiner between 7 March and 15 May 2014 (GER4T)

To be conducted by the visiting examiner between 7 March and 15 May 2014 (GER4V)

Time allowed: 35 minutes (including 20 minutes preparation time)

Instructions

- During the 20 minutes preparation time you are required to prepare **one** of the two stimulus cards given to you.
- You may make notes during the preparation time only on the Additional Answer Sheet provided. **You must not write on this card.**
- You should take the stimulus card with you into the examination room. You may refer to the card and any notes you have made at any time during this section of the test.
- Hand the stimulus card and the Additional Answer Sheet to the examiner before the start of the conversation section of the test.

Information

- The test will last approximately 15 minutes and will consist of a stimulus card (5 minutes), and a conversation based on the **two** Cultural Topics you have studied (10 minutes).
- You will be expected to choose one of the two opinions on your chosen stimulus card and outline your point of view to the examiner for approximately one minute. You must then defend and justify this opinion.
- You must **not** use a dictionary.

KARTE B	
Topic	THE MULTICULTURAL SOCIETY
Sub-topic	Racism

- Look at the card and read the two opinions in the speech bubbles.
- Choose **one** and think how you can convey and expand on its main ideas.
- Begin the discussion by outlining your point of view (this should take no longer than one minute).
- You must then be prepared to respond to anything the examiner might say and to justify your point of view.
- You may be required to explain something you have said, to respond to an opposing point of view expressed by the examiner, or to defend your expressed opinion(s).
- You may make notes in your preparation time and refer to them during this part of the test.



Ursachen von Rassismus

Meinung 1

Rassismus entsteht vor allem durch das Verhalten vieler Immigranten. Solange Einwanderer ihre Einstellungen und ihr Verhalten nicht ändern, wird es Fremdenfeindlichkeit geben.

Meinung 2

Einwanderer sind doch nicht schuld am Rassismus! Sie sind Opfer von fremdenfeindlichen Einstellungen und verdienen unseren Schutz.



General Certificate of Education
Advanced Level Examination
June 2014

German

GER4T/GER4V

Unit 4 Speaking Test

Candidate's Material

To be conducted by the teacher examiner between 7 March and 15 May 2014 (GER4T)

To be conducted by the visiting examiner between 7 March and 15 May 2014 (GER4V)

Time allowed: 35 minutes (including 20 minutes preparation time)

Instructions

- During the 20 minutes preparation time you are required to prepare **one** of the two stimulus cards given to you.
- You may make notes during the preparation time only on the Additional Answer Sheet provided.
You must not write on this card.
- You should take the stimulus card with you into the examination room. You may refer to the card and any notes you have made at any time during this section of the test.
- Hand the stimulus card and the Additional Answer Sheet to the examiner before the start of the conversation section of the test.

Information

- The test will last approximately 15 minutes and will consist of a stimulus card (5 minutes), and a conversation based on the **two** Cultural Topics you have studied (10 minutes).
- You will be expected to choose one of the two opinions on your chosen stimulus card and outline your point of view to the examiner for approximately one minute. You must then defend and justify this opinion.
- You must **not** use a dictionary.

KARTE C	
Topic	CONTEMPORARY SOCIAL ISSUES
Sub-topic	Law and order

- Look at the card and read the two opinions in the speech bubbles.
- Choose **one** and think how you can convey and expand on its main ideas.
- Begin the discussion by outlining your point of view (this should take no longer than one minute).
- You must then be prepared to respond to anything the examiner might say and to justify your point of view.
- You may be required to explain something you have said, to respond to an opposing point of view expressed by the examiner, or to defend your expressed opinion(s).
- You may make notes in your preparation time and refer to them during this part of the test.



Welche Strafen sind wirksam?

Meinung 1

Für die meisten jugendlichen Straftäter ist es die beste Strafe, gemeinnützige Arbeit zu verrichten. Lieber etwas Positives tun als im Gefängnis sitzen!

Meinung 2

Arbeit in der Gemeinde ist keine echte Strafe! Nur durch harte Bestrafung werden jugendliche Straftäter ihr Verhalten ändern.



General Certificate of Education
Advanced Level Examination
June 2014

German

GER4T/GER4V

Unit 4 Speaking Test

Candidate's Material

To be conducted by the teacher examiner between 7 March and 15 May 2014 (GER4T)

To be conducted by the visiting examiner between 7 March and 15 May 2014 (GER4V)

Time allowed: 35 minutes (including 20 minutes preparation time)

Instructions

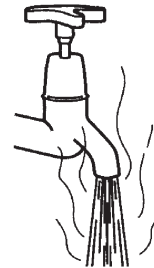
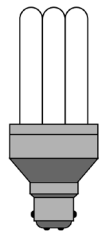
- During the 20 minutes preparation time you are required to prepare **one** of the two stimulus cards given to you.
- You may make notes during the preparation time only on the Additional Answer Sheet provided.
You must not write on this card.
- You should take the stimulus card with you into the examination room. You may refer to the card and any notes you have made at any time during this section of the test.
- Hand the stimulus card and the Additional Answer Sheet to the examiner before the start of the conversation section of the test.

Information

- The test will last approximately 15 minutes and will consist of a stimulus card (5 minutes), and a conversation based on the **two** Cultural Topics you have studied (10 minutes).
- You will be expected to choose one of the two opinions on your chosen stimulus card and outline your point of view to the examiner for approximately one minute. You must then defend and justify this opinion.
- You must **not** use a dictionary.

KARTE D	
Topic	ENVIRONMENT
Sub-topic	Energy

- Look at the card and read the two opinions in the speech bubbles.
- Choose **one** and think how you can convey and expand on its main ideas.
- Begin the discussion by outlining your point of view (this should take no longer than one minute).
- You must then be prepared to respond to anything the examiner might say and to justify your point of view.
- You may be required to explain something you have said, to respond to an opposing point of view expressed by the examiner, or to defend your expressed opinion(s).
- You may make notes in your preparation time and refer to them during this part of the test.



Energie sparen – sinnvoll oder nutzlos?

Meinung 1

Um den Planeten zu retten, müssen wir weniger Energie verbrauchen. Jeder einzelne von uns trägt Verantwortung und muss Energie sparen, wo immer möglich.

Meinung 2

In allen Ländern steigt der Energiebedarf. Versuche, im alltäglichen Leben Energie zu sparen, können kaum dazu beitragen, den weltweiten Energieverbrauch zu reduzieren.



General Certificate of Education
Advanced Level Examination
June 2014

German

GER4T/GER4V

Unit 4 Speaking Test

Candidate's Material

To be conducted by the teacher examiner between 7 March and 15 May 2014 (GER4T)

To be conducted by the visiting examiner between 7 March and 15 May 2014 (GER4V)

Time allowed: 35 minutes (including 20 minutes preparation time)

Instructions

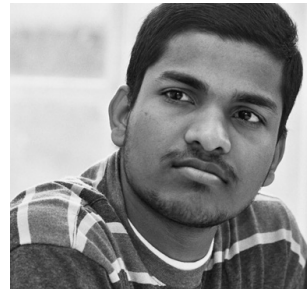
- During the 20 minutes preparation time you are required to prepare **one** of the two stimulus cards given to you.
- You may make notes during the preparation time only on the Additional Answer Sheet provided.
You must not write on this card.
- You should take the stimulus card with you into the examination room. You may refer to the card and any notes you have made at any time during this section of the test.
- Hand the stimulus card and the Additional Answer Sheet to the examiner before the start of the conversation section of the test.

Information

- The test will last approximately 15 minutes and will consist of a stimulus card (5 minutes), and a conversation based on the **two** Cultural Topics you have studied (10 minutes).
- You will be expected to choose one of the two opinions on your chosen stimulus card and outline your point of view to the examiner for approximately one minute. You must then defend and justify this opinion.
- You must **not** use a dictionary.

KARTE E	
Topic	THE MULTICULTURAL SOCIETY
Sub-topic	Immigration

- Look at the card and read the two opinions in the speech bubbles.
- Choose **one** and think how you can convey and expand on its main ideas.
- Begin the discussion by outlining your point of view (this should take no longer than one minute).
- You must then be prepared to respond to anything the examiner might say and to justify your point of view.
- You may be required to explain something you have said, to respond to an opposing point of view expressed by the examiner, or to defend your expressed opinion(s).
- You may make notes in your preparation time and refer to them during this part of the test.



Recht auf Asyl für alle?

Meinung 1

Wir müssen allen Asylbewerbern erlauben, auf Dauer in unserem Land zu bleiben. Wir haben die Pflicht, diesen Menschen zu helfen.

Meinung 2

Wir können einfach nicht alle Menschen, die um Asyl bitten, bei uns aufnehmen. Das würde zu Problemen für unsere Gesellschaft führen.



General Certificate of Education
Advanced Level Examination
June 2014

German

GER4T/GER4V

Unit 4 Speaking Test

Candidate's Material

To be conducted by the teacher examiner between 7 March and 15 May 2014 (GER4T)

To be conducted by the visiting examiner between 7 March and 15 May 2014 (GER4V)

Time allowed: 35 minutes (including 20 minutes preparation time)

Instructions

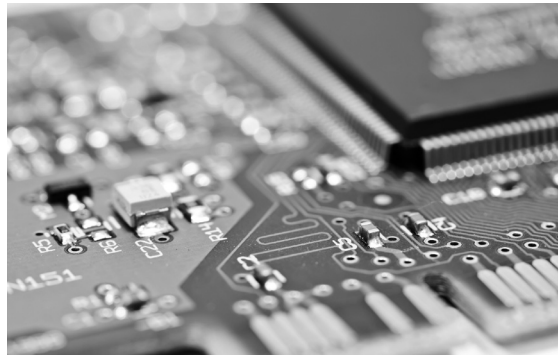
- During the 20 minutes preparation time you are required to prepare **one** of the two stimulus cards given to you.
- You may make notes during the preparation time only on the Additional Answer Sheet provided.
You must not write on this card.
- You should take the stimulus card with you into the examination room. You may refer to the card and any notes you have made at any time during this section of the test.
- Hand the stimulus card and the Additional Answer Sheet to the examiner before the start of the conversation section of the test.

Information

- The test will last approximately 15 minutes and will consist of a stimulus card (5 minutes), and a conversation based on the **two** Cultural Topics you have studied (10 minutes).
- You will be expected to choose one of the two opinions on your chosen stimulus card and outline your point of view to the examiner for approximately one minute. You must then defend and justify this opinion.
- You must **not** use a dictionary.

KARTE F	
Topic	CONTEMPORARY SOCIAL ISSUES
Sub-topic	Impact of scientific and technological progress

- Look at the card and read the two opinions in the speech bubbles.
- Choose **one** and think how you can convey and expand on its main ideas.
- Begin the discussion by outlining your point of view (this should take no longer than one minute).
- You must then be prepared to respond to anything the examiner might say and to justify your point of view.
- You may be required to explain something you have said, to respond to an opposing point of view expressed by the examiner, or to defend your expressed opinion(s).
- You may make notes in your preparation time and refer to them during this part of the test.



Der Einfluss moderner Technologie

Meinung 1

Moderne Technologie macht unser Leben leichter und interessanter. Neue technologische Entwicklungen bedeuten Fortschritt und Wohlstand für die Menschheit.

Meinung 2

Wir sind viel zu abhängig von moderner Technologie. Nicht alle neuen Erfindungen und Entwicklungen sind wirklich gut für uns.