



General Certificate of Education  
Advanced Subsidiary Examination  
January 2011

## German

## GER2T

### Unit 2 Speaking Test

#### Candidate's Material

To be conducted by the teacher examiner between 4 January and 22 January 2011 (GER2T)

Time allowed: 35 minutes (including 20 minutes preparation time)

#### Instructions

- During the 20 minutes preparation time you are required to prepare **one** of the two stimulus cards given to you.
- You may make notes during the preparation time only on the Additional Answer Sheet provided.  
**You must not write on this card.**
- You should take the stimulus card with you into the examination room. You may refer to the card and any notes you have made at any time during this section of the test.
- Hand the stimulus card and the Additional Answer Sheet to the examiner before the start of the conversation section of the test.

#### Information

- The test will last approximately 15 minutes and will consist of a stimulus card (5 minutes), and a conversation based on topics studied during the AS course (10 minutes).
- There are questions on each of the cards to provide guidance on the type of question the examiner will ask.
- You will be expected to respond to questions and discuss in **German** broader issues arising from the chosen card.
- You must **not** use a dictionary.

<b>KARTE A</b>	
Topic	<b>FAMILY / RELATIONSHIPS</b>
Sub-topic	<b>Relationships within the family</b>

## Strenge Eltern: gute Eltern?

**Verbote und  
feste Regeln**

**Strafen und  
Diskussionen**

**Verständnis  
und Toleranz**

Die Erziehung von Kindern ist eine schwierige Aufgabe für Eltern.

Wie viel Strenge ist nötig?



Source: Getty Images

Klare Grenzen für kleinere Kinder



Source: Getty Images

Mehr Freiheit für Jugendliche

### Fragen

- Worum geht es hier?
- Müssen gute Eltern auch streng sein? Warum (nicht)?
- Inwiefern ändert sich die Beziehung zwischen Eltern und Kindern, wenn die Kinder älter werden?
- Wie viel Freiheit sollten Jugendliche Ihrer Meinung nach bekommen?
- Was für ein Verhältnis haben **Sie** zu Ihren Eltern?



General Certificate of Education  
Advanced Subsidiary Examination  
January 2011

## German

## GER2T

### Unit 2 Speaking Test

#### Candidate's Material

To be conducted by the teacher examiner between 4 January and 22 January 2011 (GER2T)

Time allowed: 35 minutes (including 20 minutes preparation time)

#### Instructions

- During the 20 minutes preparation time you are required to prepare **one** of the two stimulus cards given to you.
- You may make notes during the preparation time only on the Additional Answer Sheet provided.  
**You must not write on this card.**
- You should take the stimulus card with you into the examination room. You may refer to the card and any notes you have made at any time during this section of the test.
- Hand the stimulus card and the Additional Answer Sheet to the examiner before the start of the conversation section of the test.

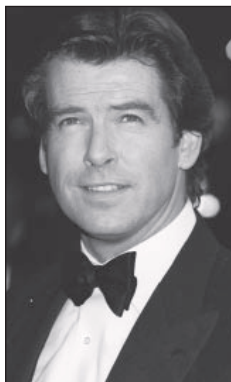
#### Information

- The test will last approximately 15 minutes and will consist of a stimulus card (5 minutes), and a conversation based on topics studied during the AS course (10 minutes).
- There are questions on each of the cards to provide guidance on the type of question the examiner will ask.
- You will be expected to respond to questions and discuss in **German** broader issues arising from the chosen card.
- You must **not** use a dictionary.

<b>KARTE B</b>	
Topic	<b>POPULAR CULTURE</b>
Sub-topic	<b>Cinema</b>

## Agent 007 – immer wieder ein Kinohit!

Seit fast 50 Jahren kämpft der berühmteste Agent der Filmgeschichte gegen das Böse.



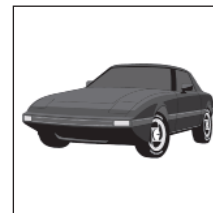
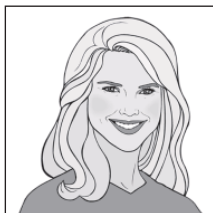
Source: Getty Images

**Bisher 22 James-Bond-Filme mit sieben verschiedenen Schauspielern in der Hauptrolle.**



Source: Getty Images

Tolle Autos, schöne Frauen, viel Action mit spektakulären Stunts – die immer gleiche Formel für alle James-Bond-Filme.



### Fragen

- Worum geht es hier?
- Was zeigt, dass die James-Bond-Filme erfolgreich sind?
- Warum sind diese Filme so beliebt?
- Gibt es Ihrer Meinung nach auch negative Aspekte in diesen Filmen?
- Sehen **Sie** selbst gern Action-Filme? Warum (nicht)?



General Certificate of Education  
Advanced Subsidiary Examination  
January 2011

## German

## GER2T

### Unit 2 Speaking Test

#### Candidate's Material

To be conducted by the teacher examiner between 4 January and 22 January 2011 (GER2T)

Time allowed: 35 minutes (including 20 minutes preparation time)

#### Instructions

- During the 20 minutes preparation time you are required to prepare **one** of the two stimulus cards given to you.
- You may make notes during the preparation time only on the Additional Answer Sheet provided.  
**You must not write on this card.**
- You should take the stimulus card with you into the examination room. You may refer to the card and any notes you have made at any time during this section of the test.
- Hand the stimulus card and the Additional Answer Sheet to the examiner before the start of the conversation section of the test.

#### Information

- The test will last approximately 15 minutes and will consist of a stimulus card (5 minutes), and a conversation based on topics studied during the AS course (10 minutes).
- There are questions on each of the cards to provide guidance on the type of question the examiner will ask.
- You will be expected to respond to questions and discuss in **German** broader issues arising from the chosen card.
- You must **not** use a dictionary.

KARTE C	
Topic	<b>MEDIA</b>
Sub-topic	<b>Communication technology</b>

## Leben ohne Handy? Unmöglich!



Source: Getty Images

Immer und überall:  
schnelle  
Kommunikation



### Aber das Handy hat auch Nachteile:



Hohe Kosten



Source: Getty Images

Manchmal störend  
für andere



Schädlich für  
die Gesundheit?

### Fragen

- Worum geht es hier?
- Welche Vorteile hat das Handy im täglichen Leben?
- Welche Probleme kann der Gebrauch des Handys mit sich bringen?
- Glauben Sie, dass ein Leben ohne Handy heutzutage noch möglich ist? Warum (nicht)?
- Wann und wie oft benutzen **Sie** das Handy?



General Certificate of Education  
Advanced Subsidiary Examination  
January 2011

## German

## GER2T

### Unit 2 Speaking Test

#### Candidate's Material

To be conducted by the teacher examiner between 4 January and 22 January 2011 (GER2T)

Time allowed: 35 minutes (including 20 minutes preparation time)

#### Instructions

- During the 20 minutes preparation time you are required to prepare **one** of the two stimulus cards given to you.
- You may make notes during the preparation time only on the Additional Answer Sheet provided.  
**You must not write on this card.**
- You should take the stimulus card with you into the examination room. You may refer to the card and any notes you have made at any time during this section of the test.
- Hand the stimulus card and the Additional Answer Sheet to the examiner before the start of the conversation section of the test.

#### Information

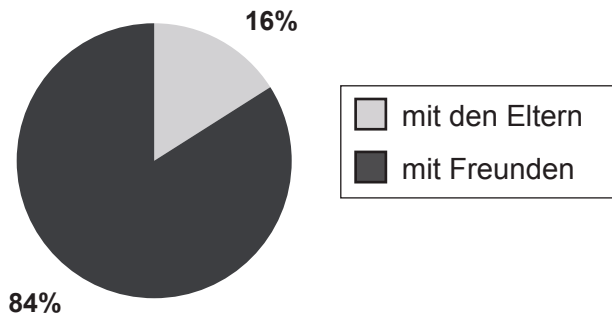
- The test will last approximately 15 minutes and will consist of a stimulus card (5 minutes), and a conversation based on topics studied during the AS course (10 minutes).
- There are questions on each of the cards to provide guidance on the type of question the examiner will ask.
- You will be expected to respond to questions and discuss in **German** broader issues arising from the chosen card.
- You must **not** use a dictionary.

KARTE D	
Topic	HEALTHY LIVING / LIFESTYLE
Sub-topic	Holidays

## Urlaub! Aber mit wem?

Umfrage unter 14- bis 18jährigen Jugendlichen:

„Mit wem möchtest du am liebsten in Urlaub fahren?“



Mehr Spaß, mehr Freiheit –  
aber auch mehr Verantwortung

### Für die Eltern wichtig:

- informiert sein über Urlaubsziel und Unterkunft
- regelmäßiger Kontakt per Telefon oder SMS

### Fragen

- Worum geht es hier?
- Warum möchten die meisten Jugendlichen ihre Ferien mit Freunden verbringen?
- Wie denken die Eltern darüber?
- Ab welchem Alter sollten Jugendliche Ihrer Meinung nach ohne Eltern in Urlaub fahren dürfen? Warum?
- Wie verbringen **Sie** am liebsten Ihre Ferien?





General Certificate of Education  
Advanced Subsidiary Examination  
January 2011

## German

## GER2T

### Unit 2 Speaking Test

#### Candidate's Material

To be conducted by the teacher examiner between 4 January and 22 January 2011 (GER2T)

Time allowed: 35 minutes (including 20 minutes preparation time)

#### Instructions

- During the 20 minutes preparation time you are required to prepare **one** of the two stimulus cards given to you.
- You may make notes during the preparation time only on the Additional Answer Sheet provided.  
**You must not write on this card.**
- You should take the stimulus card with you into the examination room. You may refer to the card and any notes you have made at any time during this section of the test.
- Hand the stimulus card and the Additional Answer Sheet to the examiner before the start of the conversation section of the test.

#### Information

- The test will last approximately 15 minutes and will consist of a stimulus card (5 minutes), and a conversation based on topics studied during the AS course (10 minutes).
- There are questions on each of the cards to provide guidance on the type of question the examiner will ask.
- You will be expected to respond to questions and discuss in **German** broader issues arising from the chosen card.
- You must **not** use a dictionary.

<b>KARTE E</b>	
Topic	<b>POPULAR CULTURE</b>
Sub-topic	<b>Fashion / trends</b>

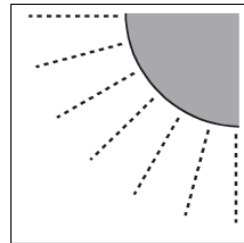
## Schönheit mit Risiko

Sonnengebräunte Haut – auch im Winter.

Das gehört für viele junge Menschen zu schönem und gesundem Aussehen.



Source: Getty Images



**Aber:** erhöhtes Hautkrebsrisiko durch lange und starke UV- Bestrahlung!

**Seit 2009 gilt in Deutschland:**



Besuch eines Solariums erst ab 18 Jahren

### Fragen

- Worum geht es hier?
- Warum möchten viele Menschen gebräunte Haut haben?
- Wie versucht man in Deutschland, das Gesundheitsrisiko durch UV-Bestrahlung zu reduzieren? Halten Sie das für sinnvoll?
- Gibt es Ihrer Meinung nach auch andere Modetrends mit negativen Auswirkungen?
- Wie wichtig ist gutes Aussehen für **Sie**?



General Certificate of Education  
Advanced Subsidiary Examination  
January 2011

## German

## GER2T

### Unit 2 Speaking Test

#### Candidate's Material

To be conducted by the teacher examiner between 4 January and 22 January 2011 (GER2T)

Time allowed: 35 minutes (including 20 minutes preparation time)

#### Instructions

- During the 20 minutes preparation time you are required to prepare **one** of the two stimulus cards given to you.
- You may make notes during the preparation time only on the Additional Answer Sheet provided.  
**You must not write on this card.**
- You should take the stimulus card with you into the examination room. You may refer to the card and any notes you have made at any time during this section of the test.
- Hand the stimulus card and the Additional Answer Sheet to the examiner before the start of the conversation section of the test.

#### Information

- The test will last approximately 15 minutes and will consist of a stimulus card (5 minutes), and a conversation based on topics studied during the AS course (10 minutes).
- There are questions on each of the cards to provide guidance on the type of question the examiner will ask.
- You will be expected to respond to questions and discuss in **German** broader issues arising from the chosen card.
- You must **not** use a dictionary.

KARTE F	
Topic	HEALTHY LIVING / LIFESTYLE
Sub-topic	Health / well being

## Generation XXL

Übergewicht und Fettleibigkeit sind auch in Deutschland ein immer größeres Gesundheitsproblem

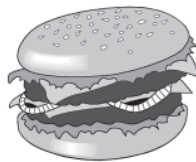
So viele Deutsche sind laut Statistik übergewichtig:

Männer	66%
Frauen	51%
Jugendliche	30%
Kinder	20%

**Die Hauptursachen: falsche Essgewohnheiten und zu wenig Bewegung**



zu viel



zu fett



zu süß

### Fragen

- Worum geht es hier?
- Aus welchen Gründen leiden so viele Deutsche an Übergewicht?
- Warum ist die hohe Anzahl an dicken Kindern und Jugendlichen besonders alarmierend?
- Was könnte man Ihrer Meinung nach gegen dieses Gesundheitsproblem tun?
- Wie achten Sie auf **Ihre** Ernährung?