

ADVANCED GCE
GEOGRAPHY
Global Issues

F763/I/2

INSERT 2 – RESOURCE BOOKLET

Tuesday 1 February 2011
Afternoon

Duration: 2 hours 30 minutes



INFORMATION FOR CANDIDATES

- This document consists of **8** pages. Any blank pages are indicated.

INSTRUCTION TO EXAMS OFFICER / INVIGILATOR

- Do not send this insert for marking; it should be retained in the centre or destroyed.

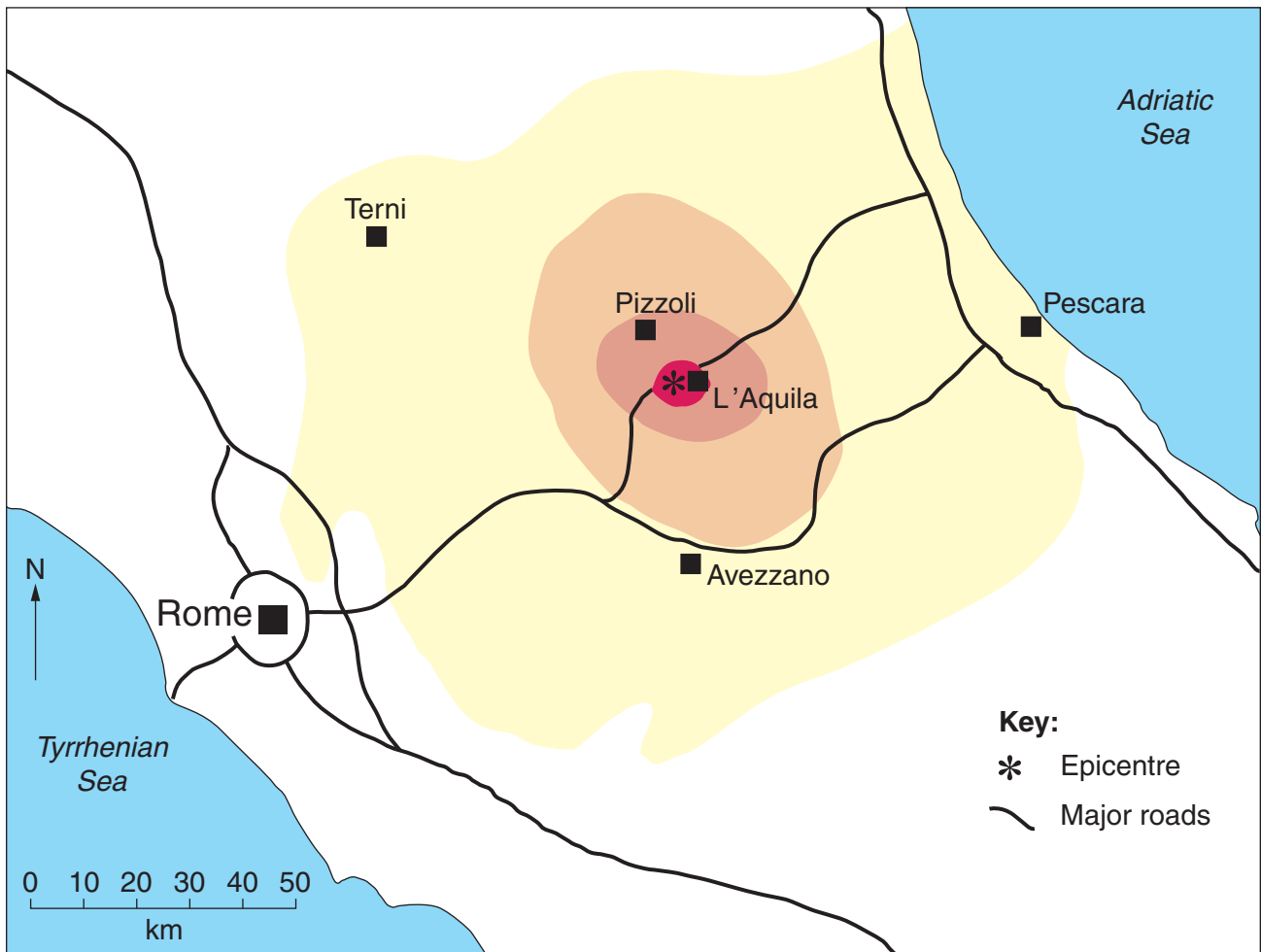
Earth hazards

Fig. 1

Map and data relating to earthquake impact in central Italy, 6 April 2009

Intensity (modified Mercalli scale)	Estimated population affected (thousands)	Potential structural damage
8	33	moderate to heavy
7	55	moderate
6	42	light to moderate
5	1 560	very light to light
4	5 000	none

Intensity given in Modified Mercalli Intensity units. This scale runs from 1 to 12, with 12 being designated as 'catastrophic destruction'. Note that the colours on the map relate to the modified Mercalli scale, as shown in the table above.



Ecosystems and environments under threat

Fig. 2

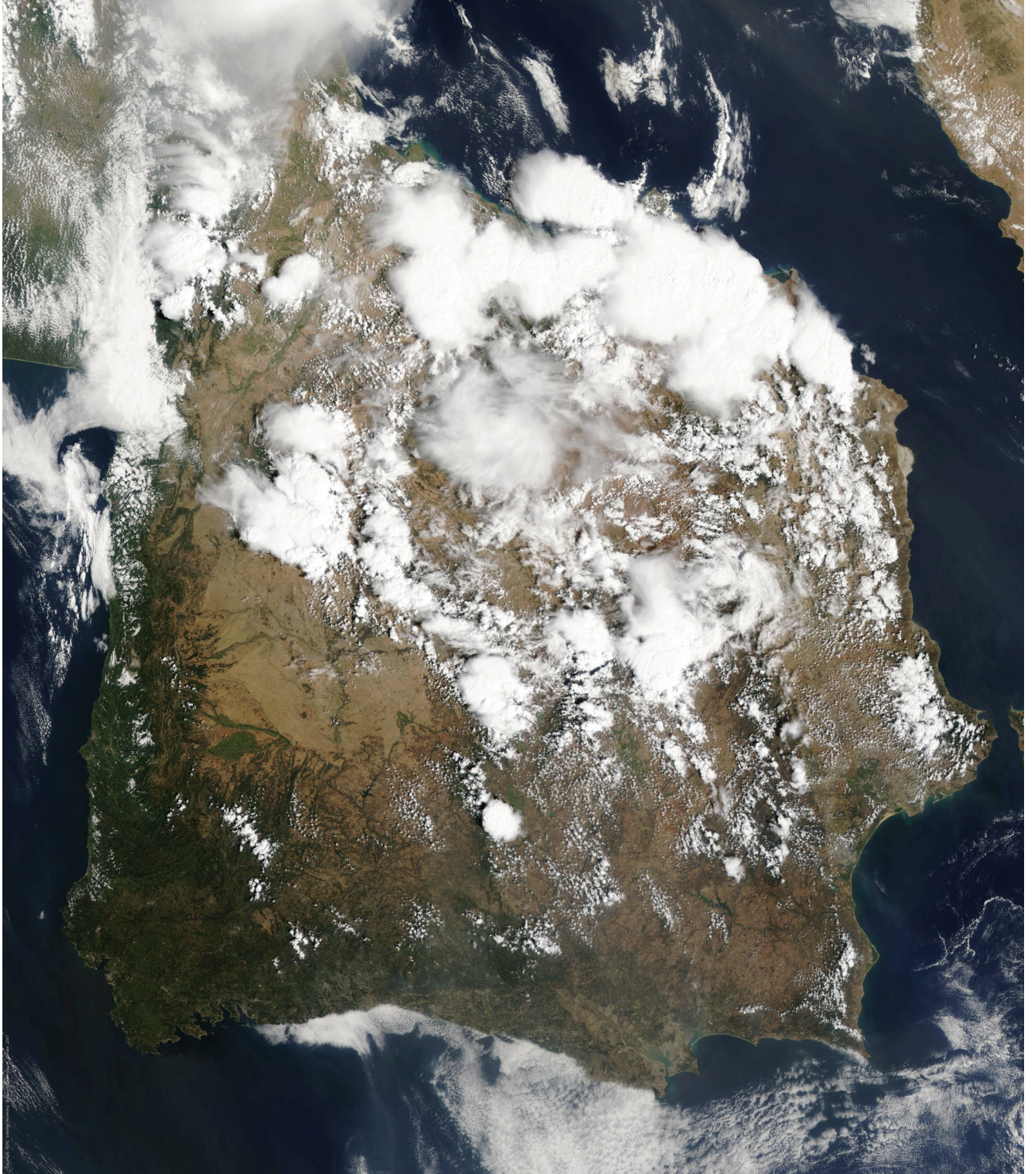
Part of a sand dune ecosystem



Climatic hazards

Fig. 3

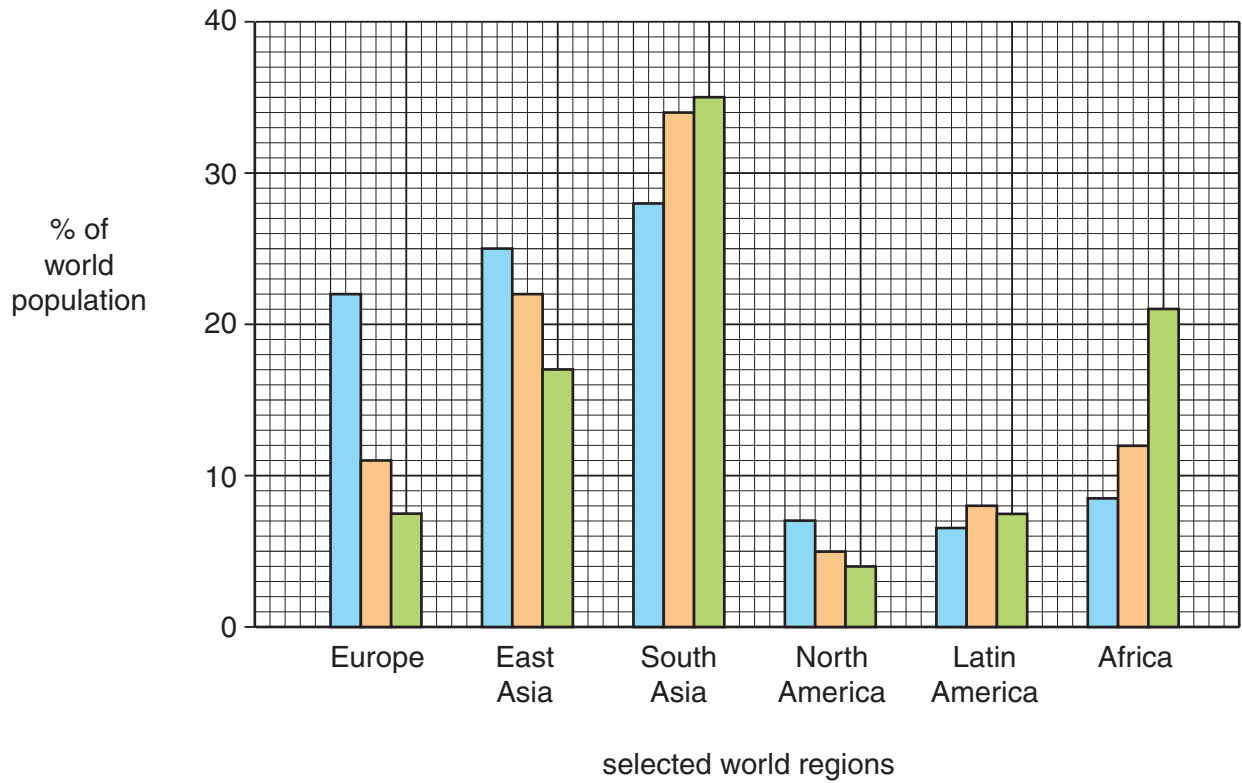
Satellite image of Spain and Portugal under anticyclonic conditions, September 2007



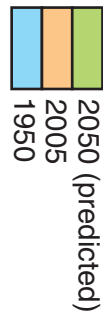
Population and resources

Fig. 4

Population change for selected world regions, 1950–2050



Key:



Globalisation

Fig. 5

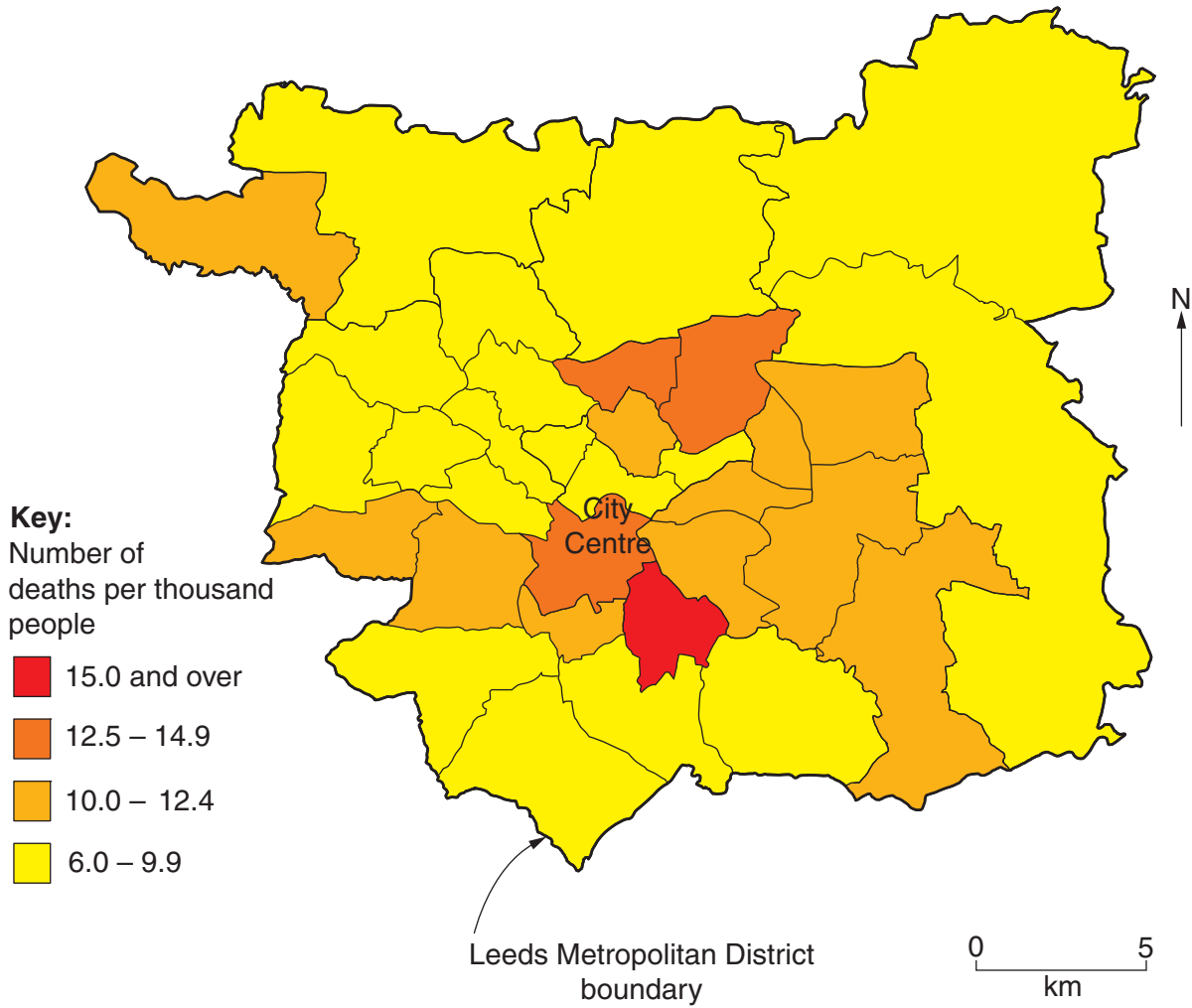
A large scale international aid project in an LEDC



Development and inequalities

Fig. 6

Death rates within Leeds, 2001



**Copyright Information**

OCR is committed to seeking permission to reproduce all third-party content that it uses in its assessment materials. OCR has attempted to identify and contact all copyright holders whose work is used in this paper. To avoid the issue of disclosure of answer-related information to candidates, all copyright acknowledgements are reproduced in the OCR Copyright Acknowledgements Booklet. This is produced for each series of examinations and is freely available to download from our public website (www.ocr.org.uk) after the live examination series.

If OCR has unwittingly failed to correctly acknowledge or clear any third-party content in this assessment material, OCR will be happy to correct its mistake at the earliest possible opportunity.

For queries or further information please contact the Copyright Team, First Floor, 9 Hills Road, Cambridge CB2 1GE.

OCR is part of the Cambridge Assessment Group; Cambridge Assessment is the brand name of University of Cambridge Local Examinations Syndicate (UCLES), which is itself a department of the University of Cambridge.